



Organisation Chain :	NHPC Limited Chamera Power Station-I-NHPC
Tender ID :	2026_NHPC_913065_1
Tender Ref No :	NH/CPS-1/PnC/W-1615/2026-27/ 33 Dated 05/06/2026
Tender Title :	Repair and Re-babbiting of TGB Shell dismantled from Unit#3 and Unit 1 of Chamera Power house-1.
Corrigendum Type :	Technical Bid

Corrigendum Document Details

Corr.No.	Corrigendum Title	Corrigendum Description	Published Date	Document Name	Doc Size(in KB)
1	Corrigendum# 1	Corrigendum	17-Jun-2026 11:01 AM	Anne1.pdf	3617.15



एन एच पी सी लिमिटेड
(भारत सरकार का एक नवरातन उद्यम)
NHPC Limited
(A Government of India Navratna Enterprise)



प्रापण एवं संविदा विभाग
Procurement & Contract Department
चमेरा पावर स्टेशन-1, खैरी,
जिला- चम्बा, हिमाचल प्रदेश-176325
Chamera Power Station-1, Khairi,
District - Chamba, Himachal Pradesh-176325
ईमेल/Email:pnc-chamera1@nhpc.nic.in

CIN: L40101HR1975GOI032564 An ISO 9001:2015, ISO 14001:2015 & ISO 45001:2018 Certified Power Station

संख्या: एनएच/सीपीएस-1/पी&सी/डब्ल्यू-1615/2026-27/ 148

दिनांक: 17/06/2026

शुद्धिपत्र-1

कार्य का नाम: चमेरा पावर हाउस-1 की यूनिट#3 एवं यूनिट#1 से निकाले गए TGB शेल की मरम्मत एवं री-बैबिटिंग।

NAME OF WORK:- Repair and Re-babbiting of TGB Shell dismantled from Unit#3 and Unit#1 of Chamera Power house-1.

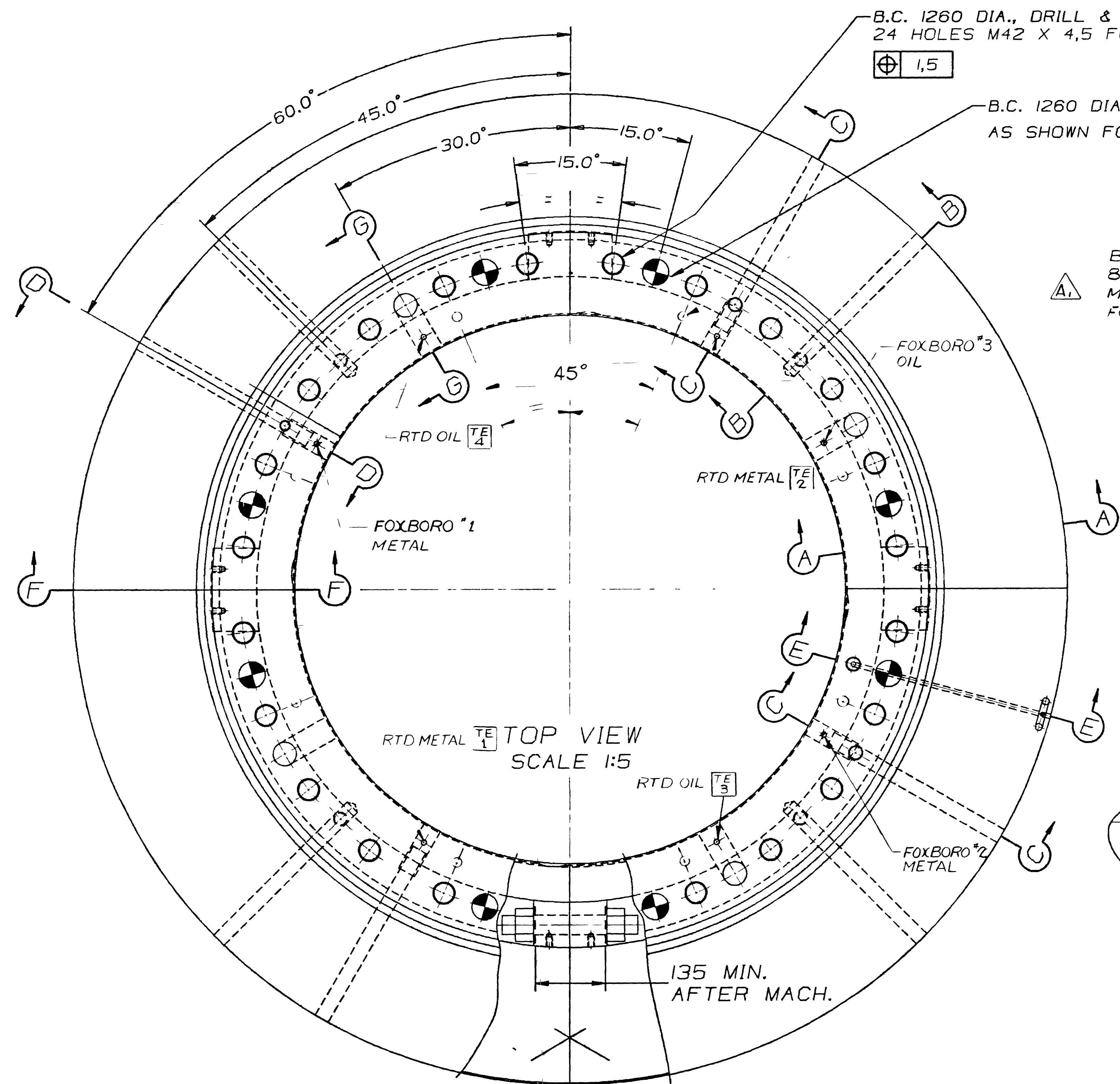
NIT No.: NH/CPS-1/P&C/W-1615/2026-27/33 Dated: 05/06/2026 (Tender ID: 2026_NHPC_ 913065_1

The SECTION-IX DRAWINGS is enclosed as Annexure-1

All other terms and conditions of NIT shall remain unchanged.
This issue with the approval of competent authority.

-sd-
उप महाप्रबंधक (आईटी)
क्रय एवं संविदा विभाग

"UPSTREAM"

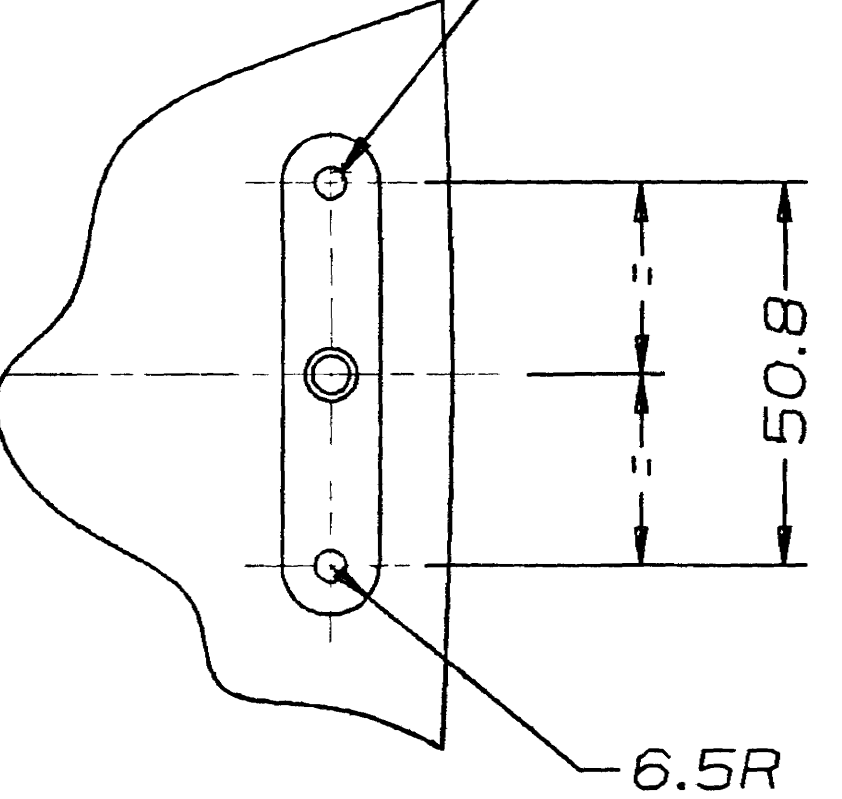


B.C. 1260 DIA., DRILL & TAP 24 HOLES M42 X 4,5 FOR MK ① & ②

B.C. 1260 DIA., AT FIELD ASS'Y, 8 HOLES 50,0^{+0,03}_{-0,00} DIA. AS SHOWN FOR MK ③ OF ⑥

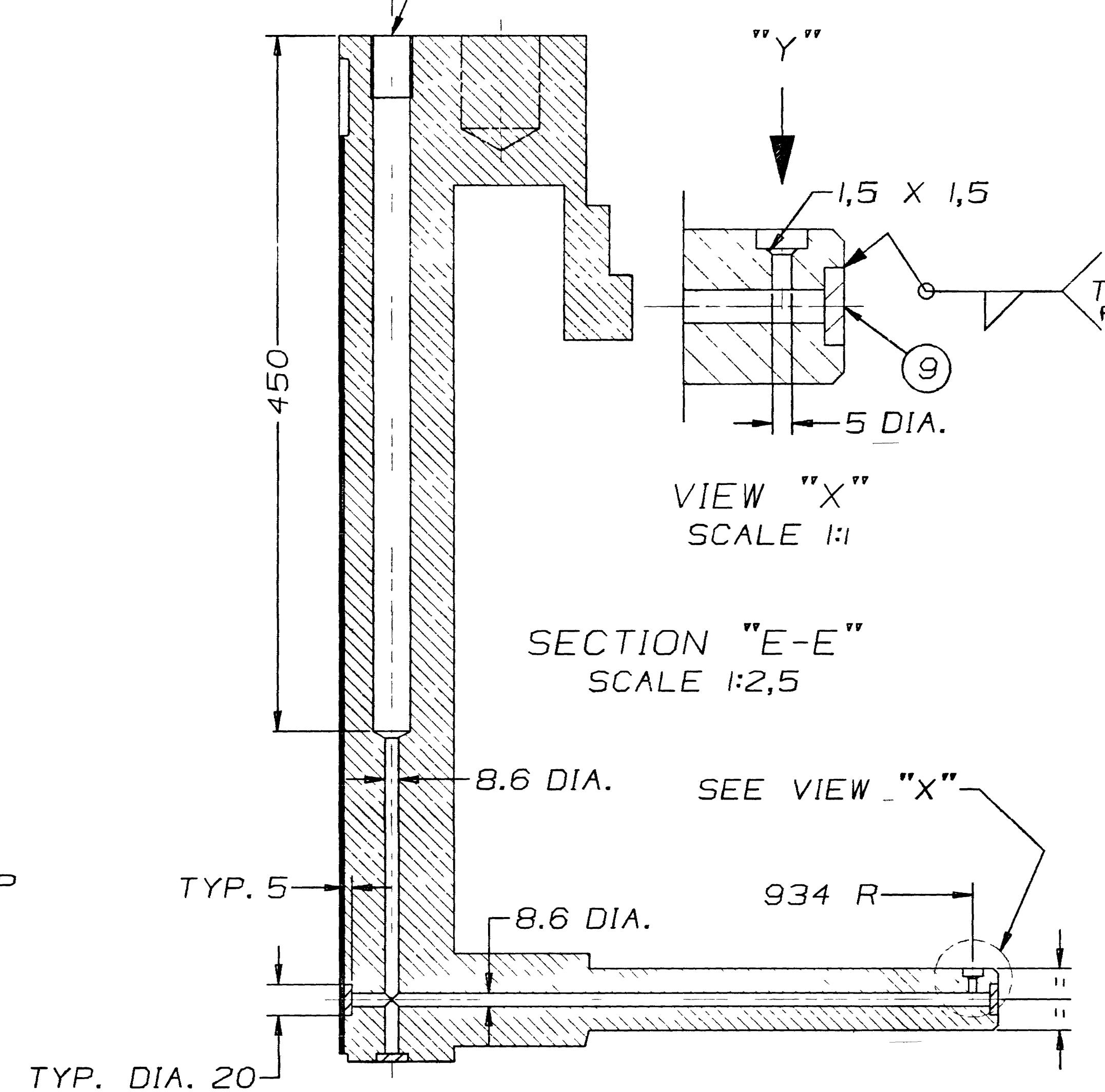
B.C. 1132 DIA. DRILL & TAP 8 HOLES EQL. SP. M 20 X 2,5 X 60 DEEP FOR EYE BOLT

2 HOLES #8-32UNC X 12 DEEP USE MK ① AS TEMPLATE



VIEW "Y" SCALE 1:1

1 HOLE DRILL 59/64", & TAP 3/4" NPT (LIQUID LEVEL CONTROL)



SECTION "E-E" SCALE 1:2,5

VIEW "X" SCALE 1:1

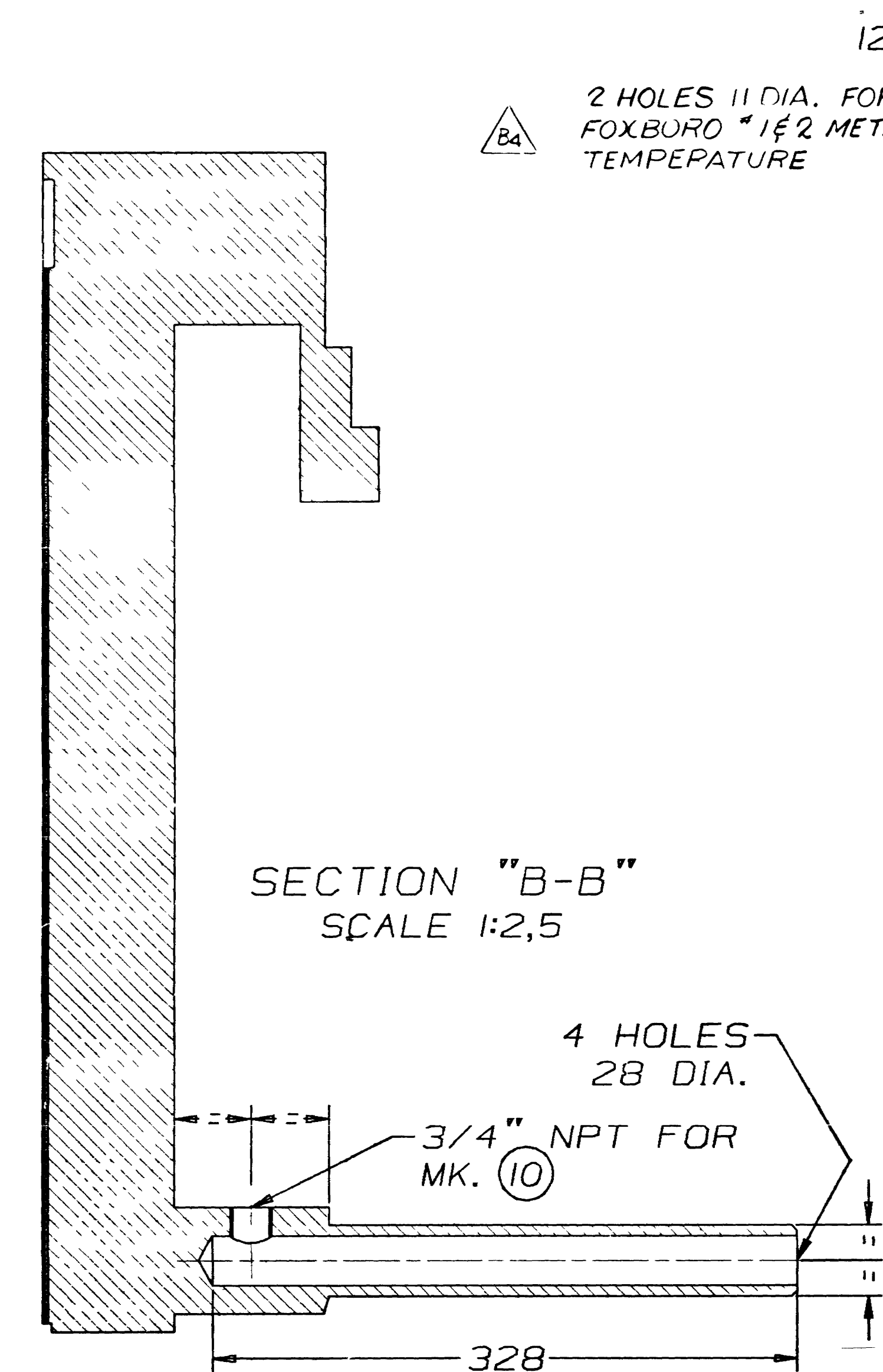
DETAIL OF DRAWING NO.: 161-161-01-0
DRAWINGS LISTED BELOW COMPLETE THIS DRAWING.

MARK	DESCRIPTION	DRAWING M.I.L.
①	FERRULE	GEN281-05
②	BEARING COLLAR PLATE	161-161-13-1
③	GUIDE BEARING SUPPORT	161-162-01-1
④	SHAFT MACHINING	161-152-01-3
⑤	GUIDE BEARING FABRICATION	161-161-01-2

NOTES

- DESCRIPTION OF MK ①
B1=M42 X 4,5 X 65 L6 BE=M42 X 4,5
B=110 L6=175 G=45
- DESCRIPTION OF MK ⑤
M36 X 4 L6=260 G=125
- SURFACE FINISH $\sqrt{3,2}$ UNLESS OTHERWISE NOTED
- FOR STRABABBIT APPLICATION, SEE EI-000-63
- APPROXIMATIVE WEIGHT:
- WELDING TO BE IN ACCORDANCE WITH SPECIFICATION MIL N° SPG 2 V1 UNLESS OTHERWISE NOTED

2 HOLES 11 DIA. FOR FOXBORO *1 & 2 METAL TEMPERATURE



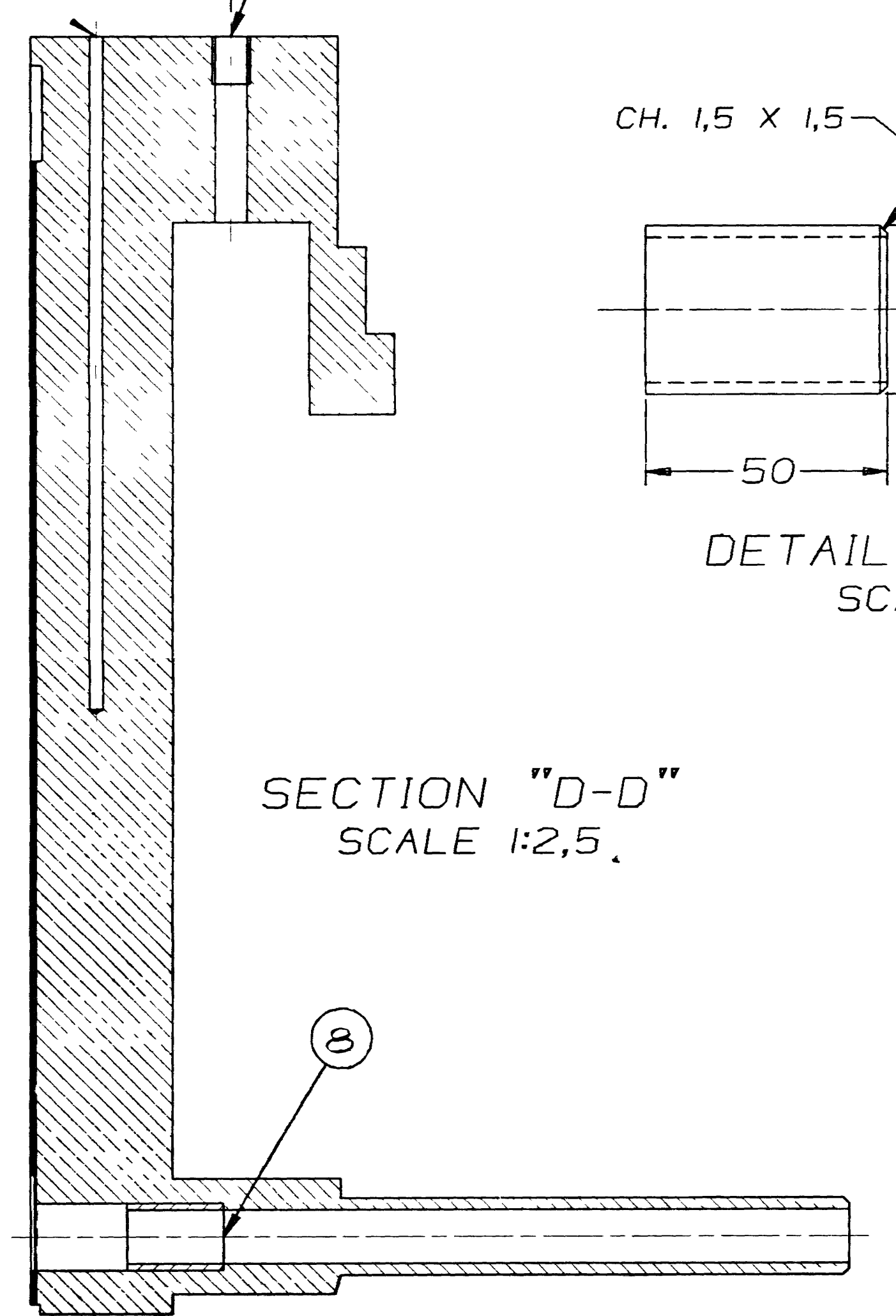
SECTION "B-B" SCALE 1:2,5

4 HOLES 28 DIA.

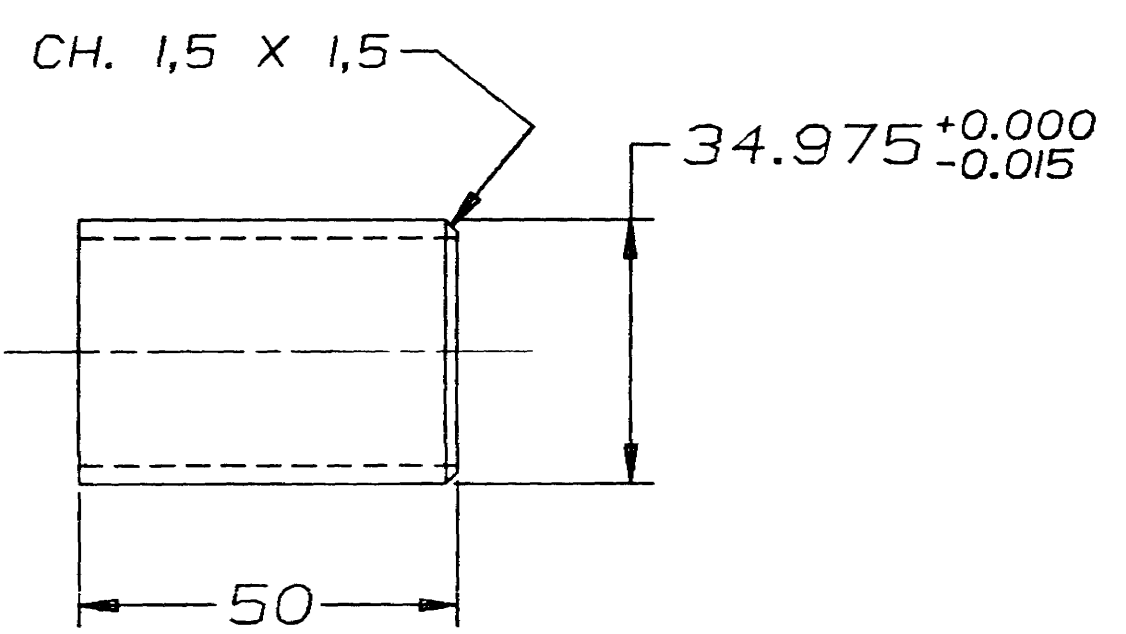
3/4" NPT FOR MK. ⑩

328

1 HOLE M20 X 2,5 X 25 DEEP (OIL GAGE)

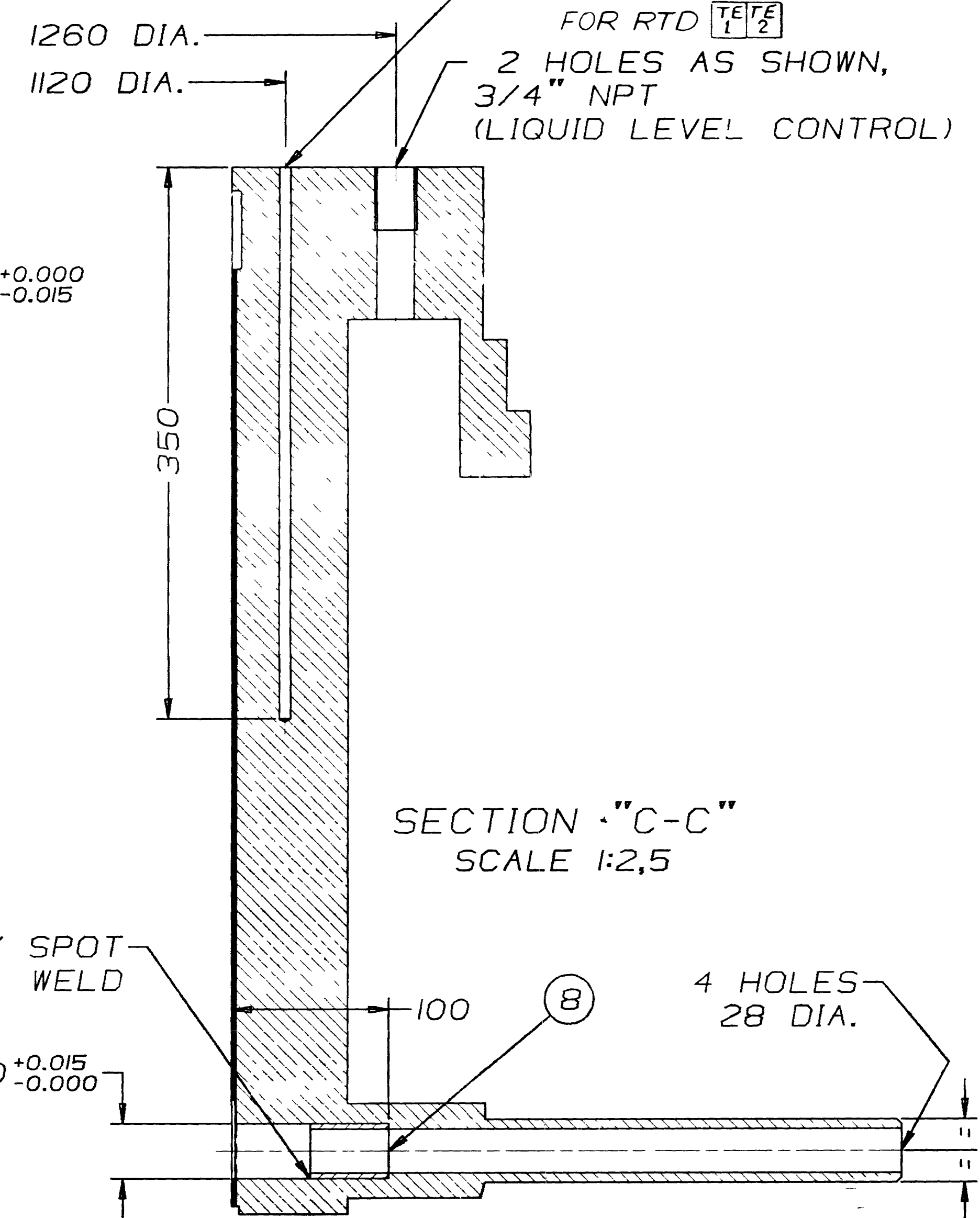


SECTION "D-D" SCALE 1:2,5



DETAIL OF MK ⑧ SCALE 1:1

2 HOLES 7 DIA. (METAL TEMP.) FOR RTD ① & ②
2 HOLES AS SHOWN, 3/4" NPT (LIQUID LEVEL CONTROL)



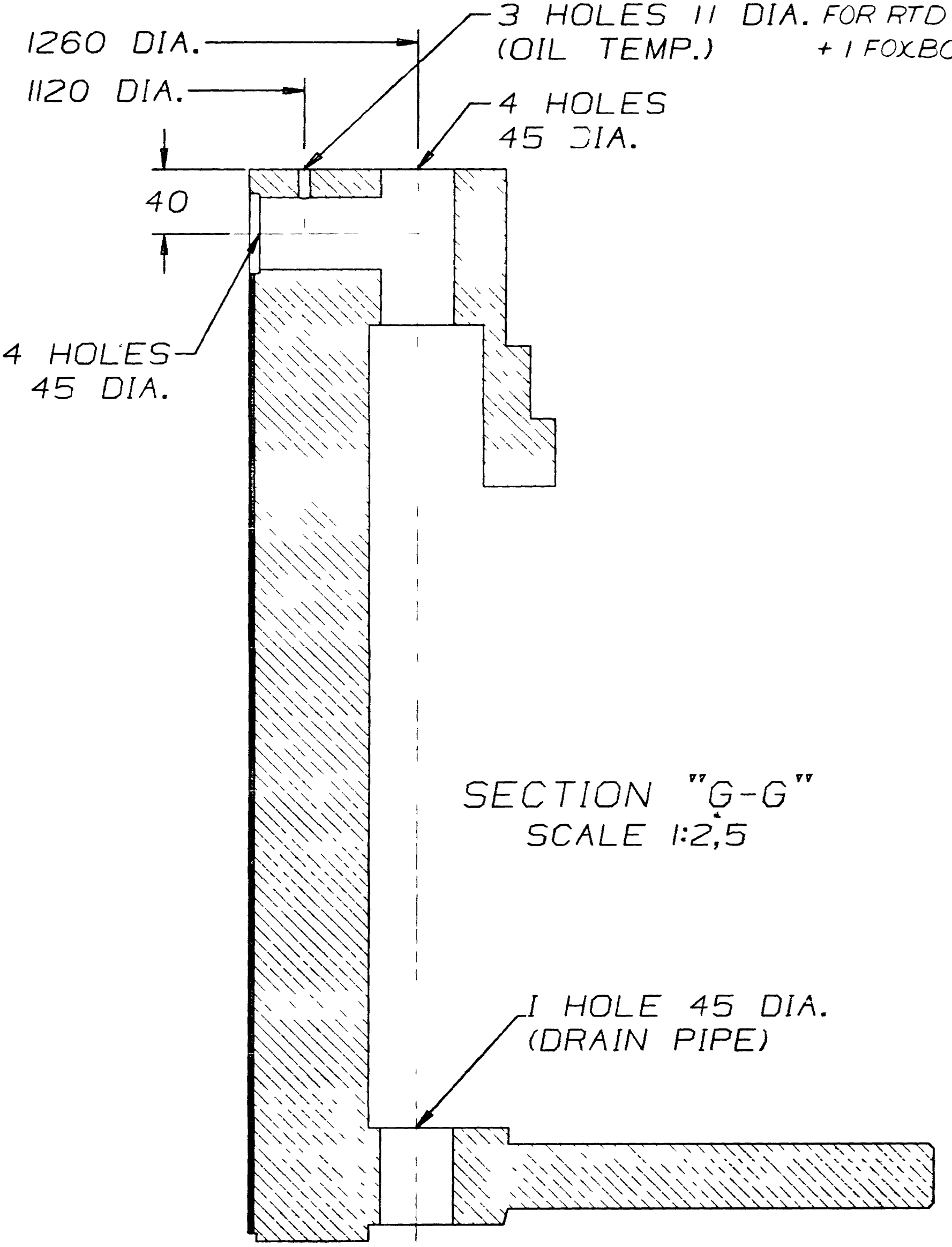
SECTION "C-C" SCALE 1:2,5

BLOCK BY SPOT WELD

DIA. 35.000^{+0,015}_{-0,000}

4 HOLES 28 DIA.

3 HOLES 11 DIA. FOR RTD ③ & ④ + 1 FOXBORO
4 HOLES 45 DIA.



SECTION "G-G" SCALE 1:2,5

1 HOLE 45 DIA. (DRAIN PIPE)

QTY	UNIT	DESCRIPTION	MAT'L	WEIGHT	TOTAL WEIGHT	REMARKS
12	2 Kg	PRIMER	METCO 405			
11	250 Kg	BABBIT	SPABABBIT "A"			
10	4	SQUARE PLUG (CORED) 3/4" NPT	MALL. IRON			
9	3	WASHER 5 THK.	STEEL			
8	4	1/2" O.D. TUBING WALL 5/32" OR EQUIV.	MT105/108			SEE DETAIL
7	20	LOCK WASHER 1 7/16" DIA.	STEEL			
6	8	NUT M36 X 4	STEEL CL.9 IFI-526-76			
5	8	FITTED STUD 38.00 ^{+0,03} DIA.	SPS OR CM			SEE DESCRIPTION
4	12	HEX. HEAD BOLT M36 X 4 X 205L	STEEL CL.8.8 WITH HEX IFI-526-76			NUT
3	24	LOCK WASHER 1 3/4" DIA.	STEEL			
2	24	NUT M42 X 4,5	STEEL CL.9 IFI-526-76			
1	24	STUD M42 X 4,5	SPS OR CM			SEE DESCRIPTION

MAT'L REQ. FOR: 1 UNIT

MARINE INDUSTRIE LTEE
TRACY P.O.
CANADA
SN: 161-161-01-01-02-03-04-05-06-07-08-09-10-11-12-13-14-15-16-17-18-19-20-21-22-23-24-25-26-27-28-29-30-31-32-33-34-35-36-37-38-39-40-41-42-43-44-45-46-47-48-49-50-51-52-53-54-55-56-57-58-59-60-61-62-63-64-65-66-67-68-69-70-71-72-73-74-75-76-77-78-79-80-81-82-83-84-85-86-87-88-89-90-91-92-93-94-95-96-97-98-99-100

HYDRO-ELECTRIC MATERIAL DIVISION

NATIONAL HYDROELECTRIC POWER CORPORATION LTD
CHAMBERA HYDROELECTRIC PROJECT
3 TURBINES 185 MW - 214.3 RPM - HEAD 185 M.
SPECIFICATION 7161-4-4500-TS-001-00

AS BUILT IN SHOP

GUIDE BEARING MACHINING

Pour Exécution

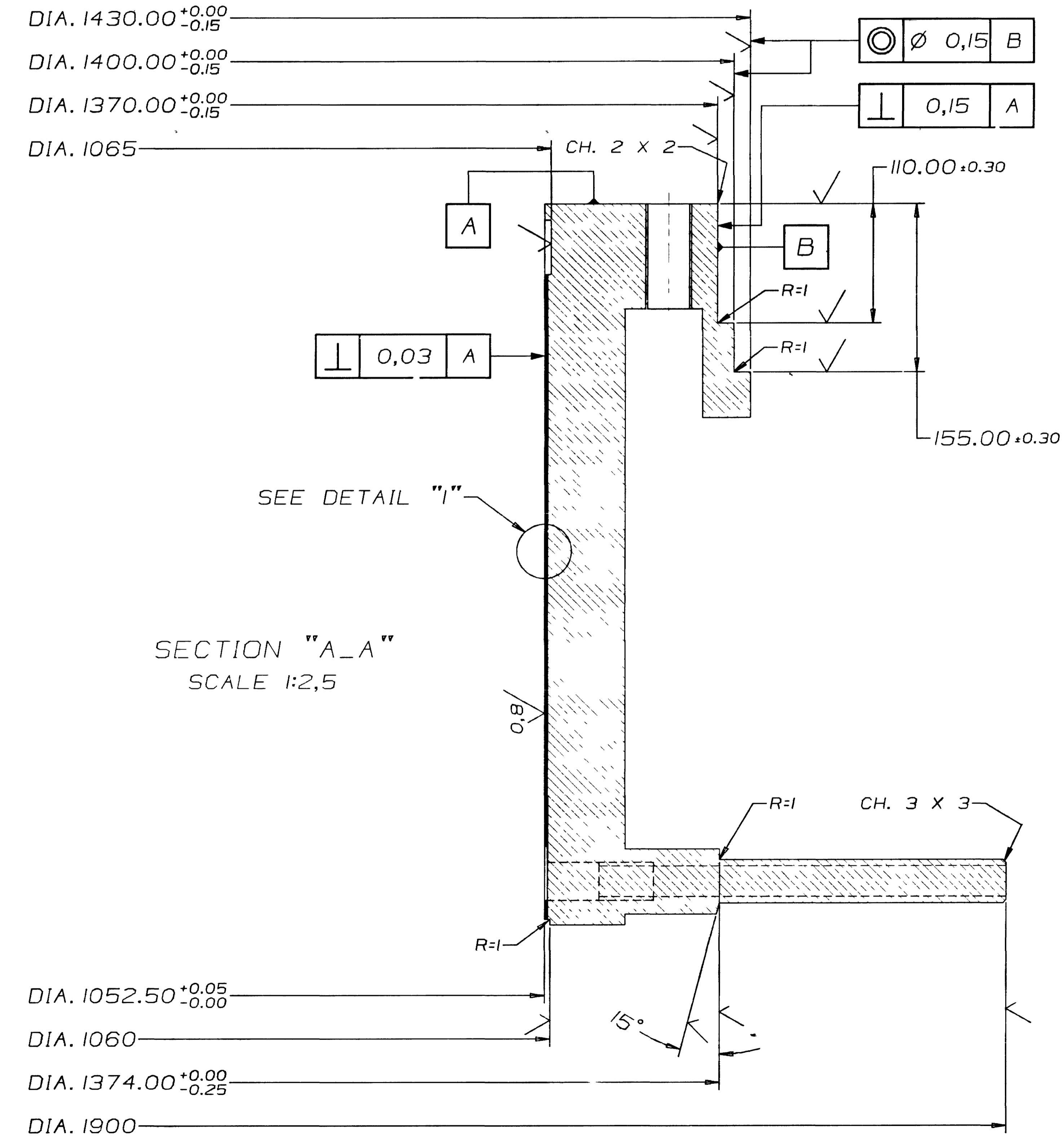
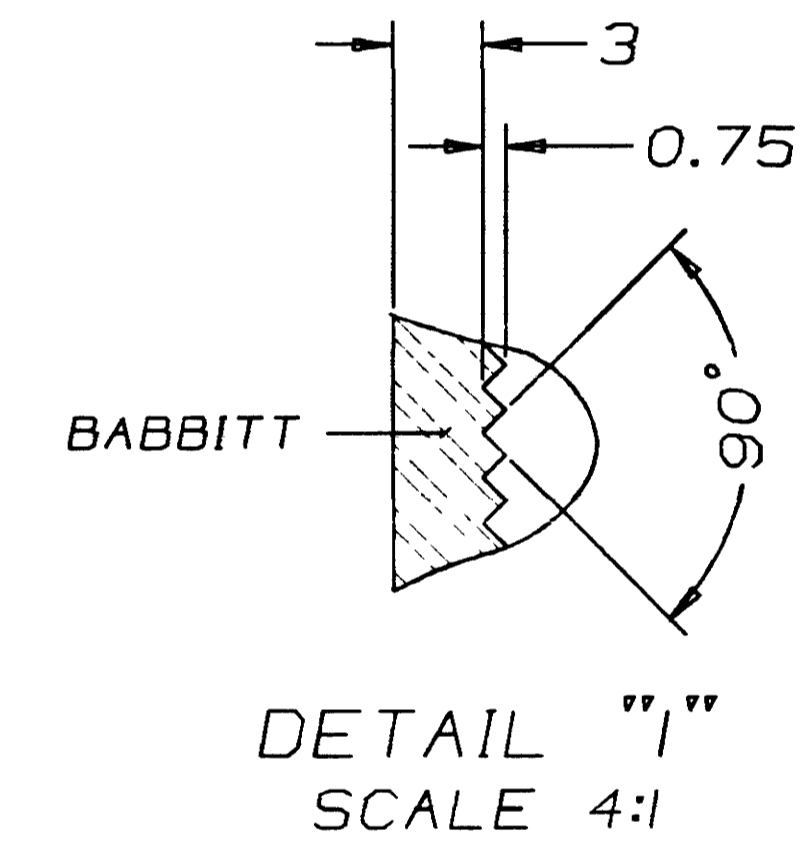
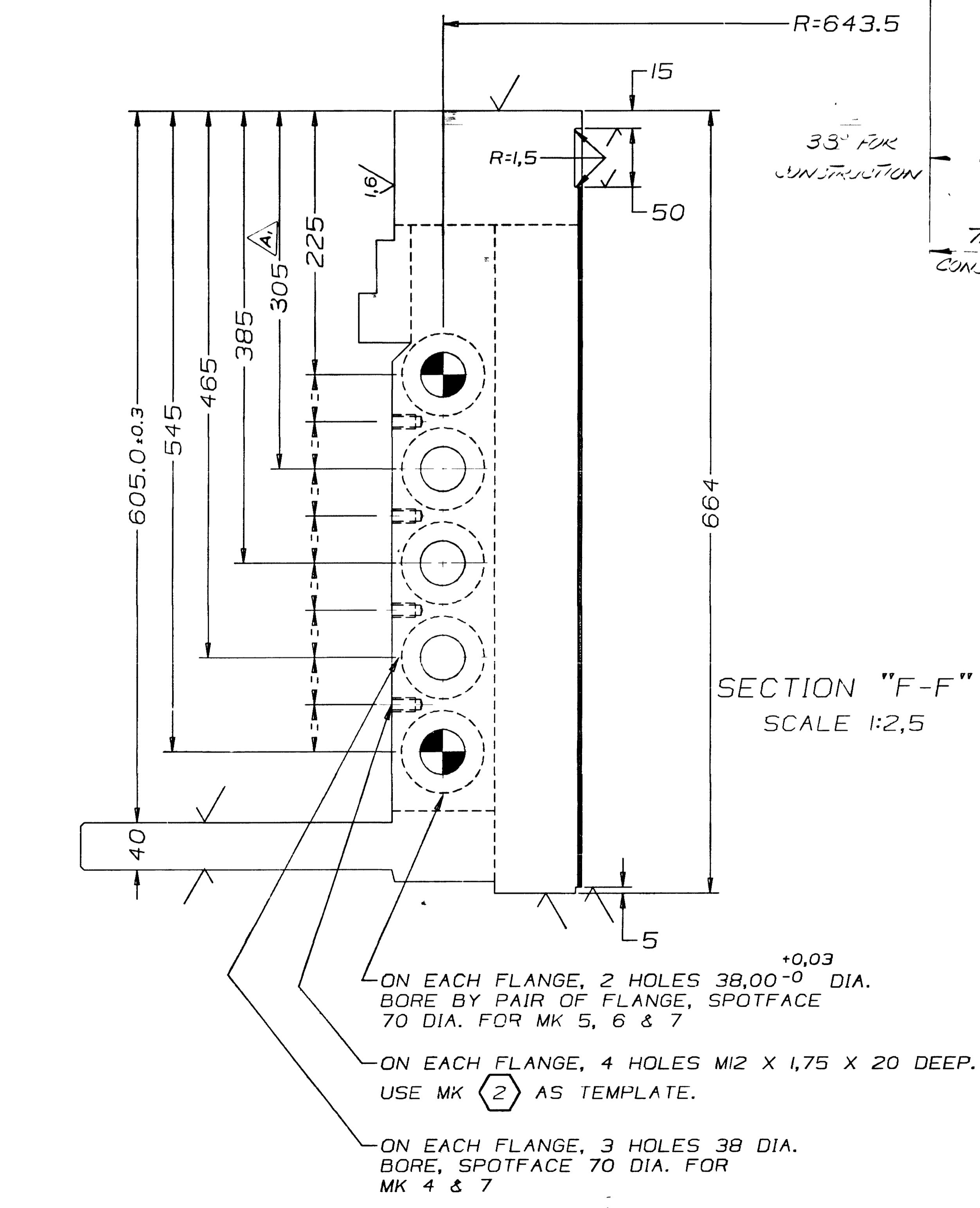
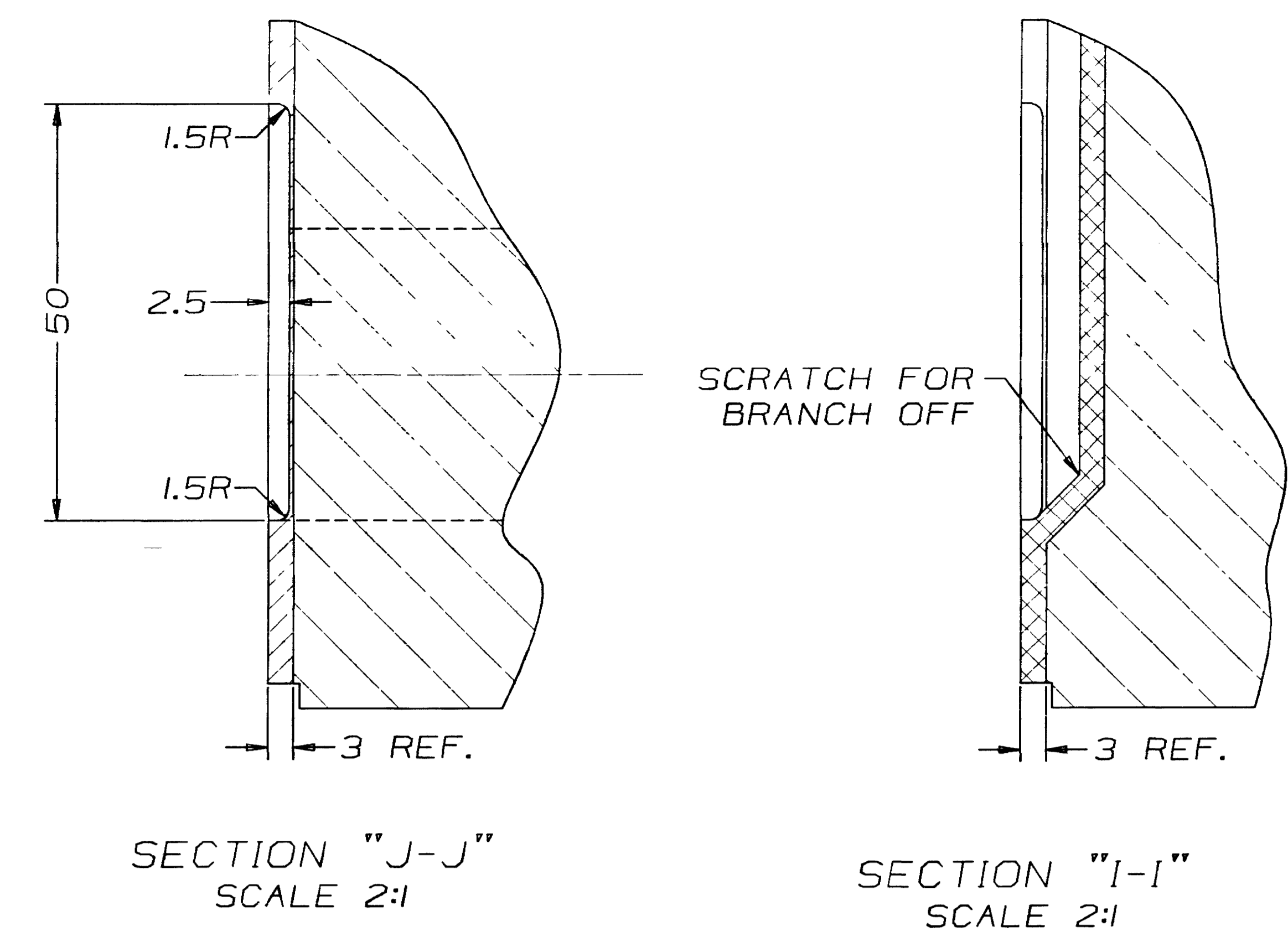
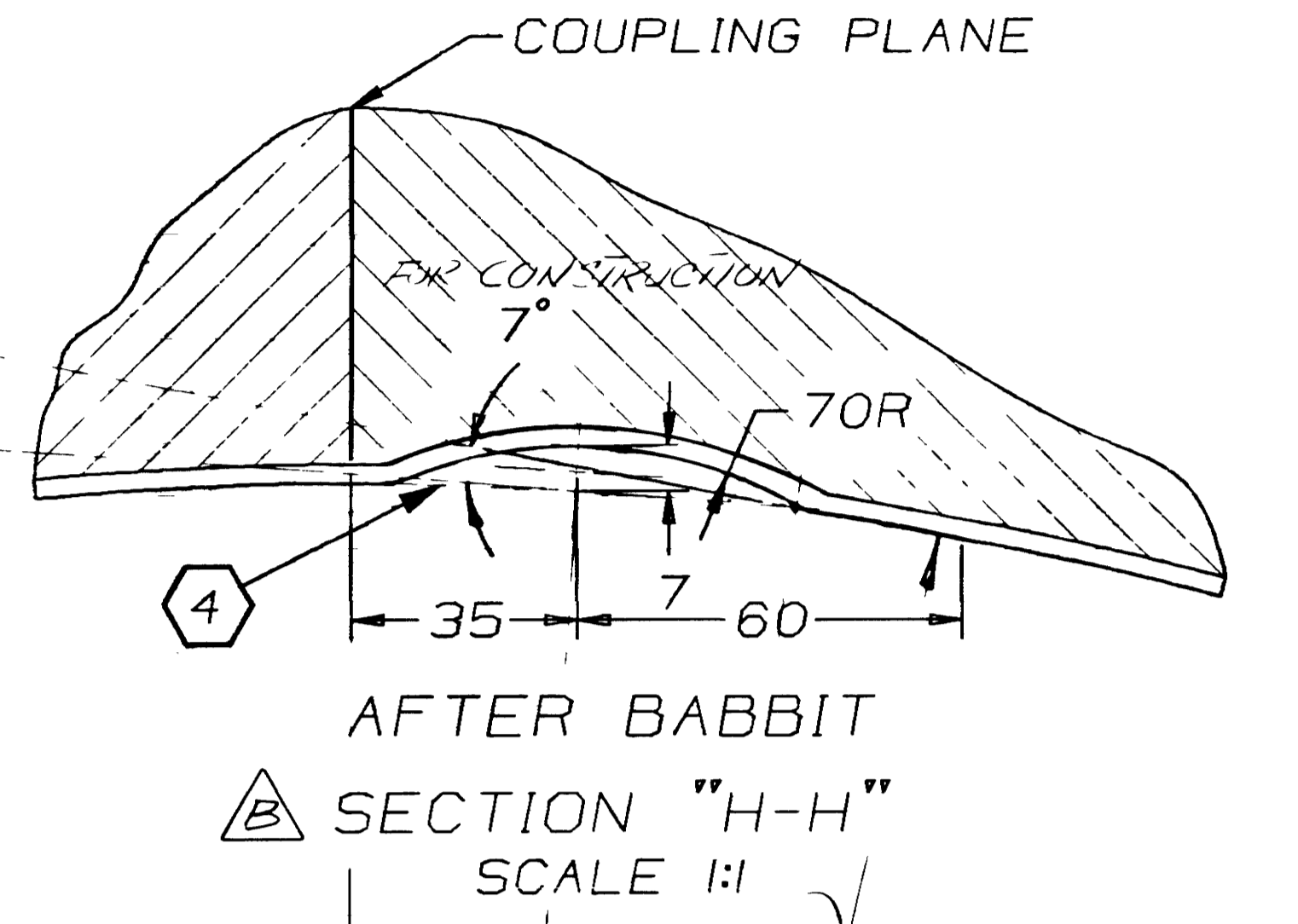
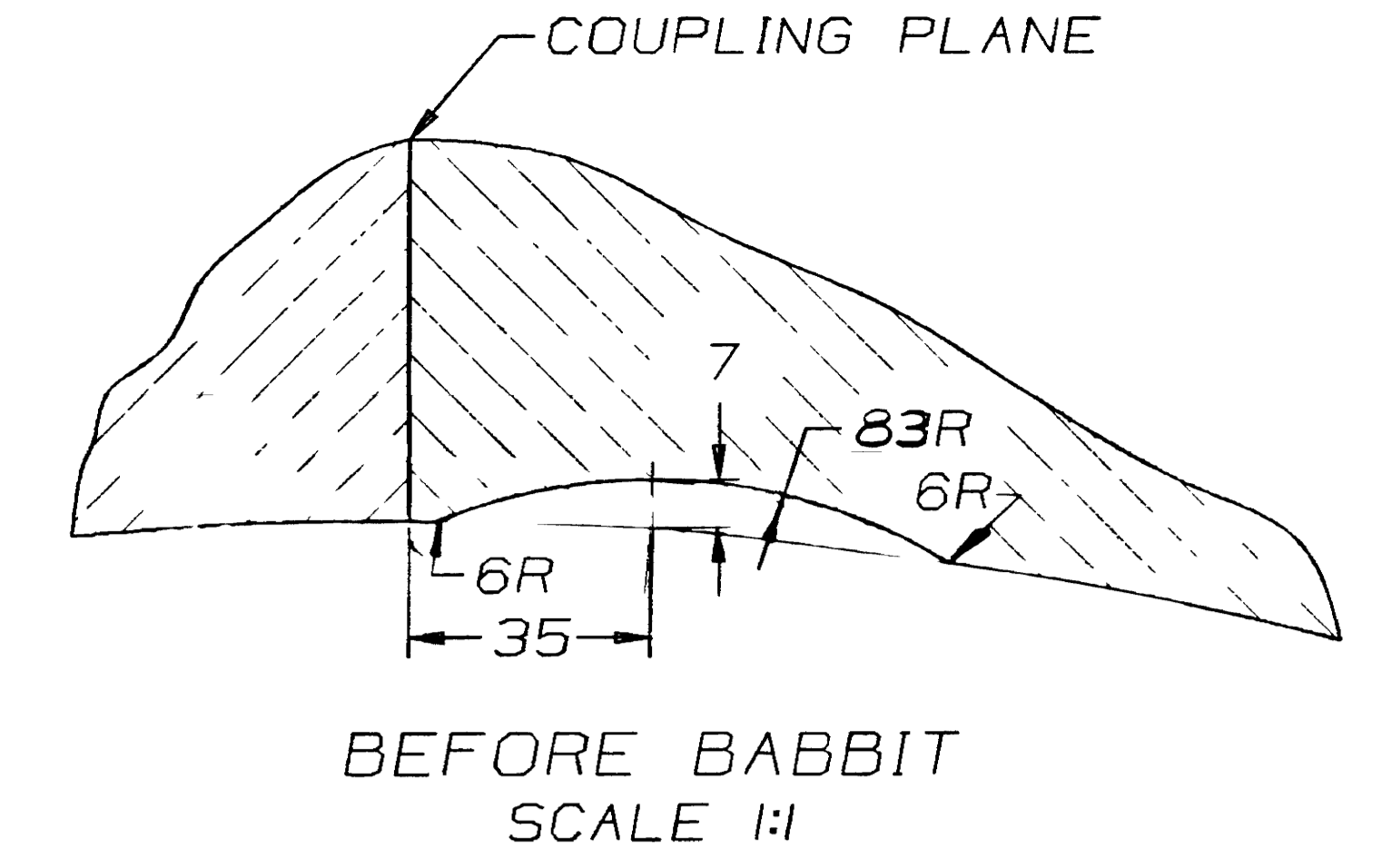
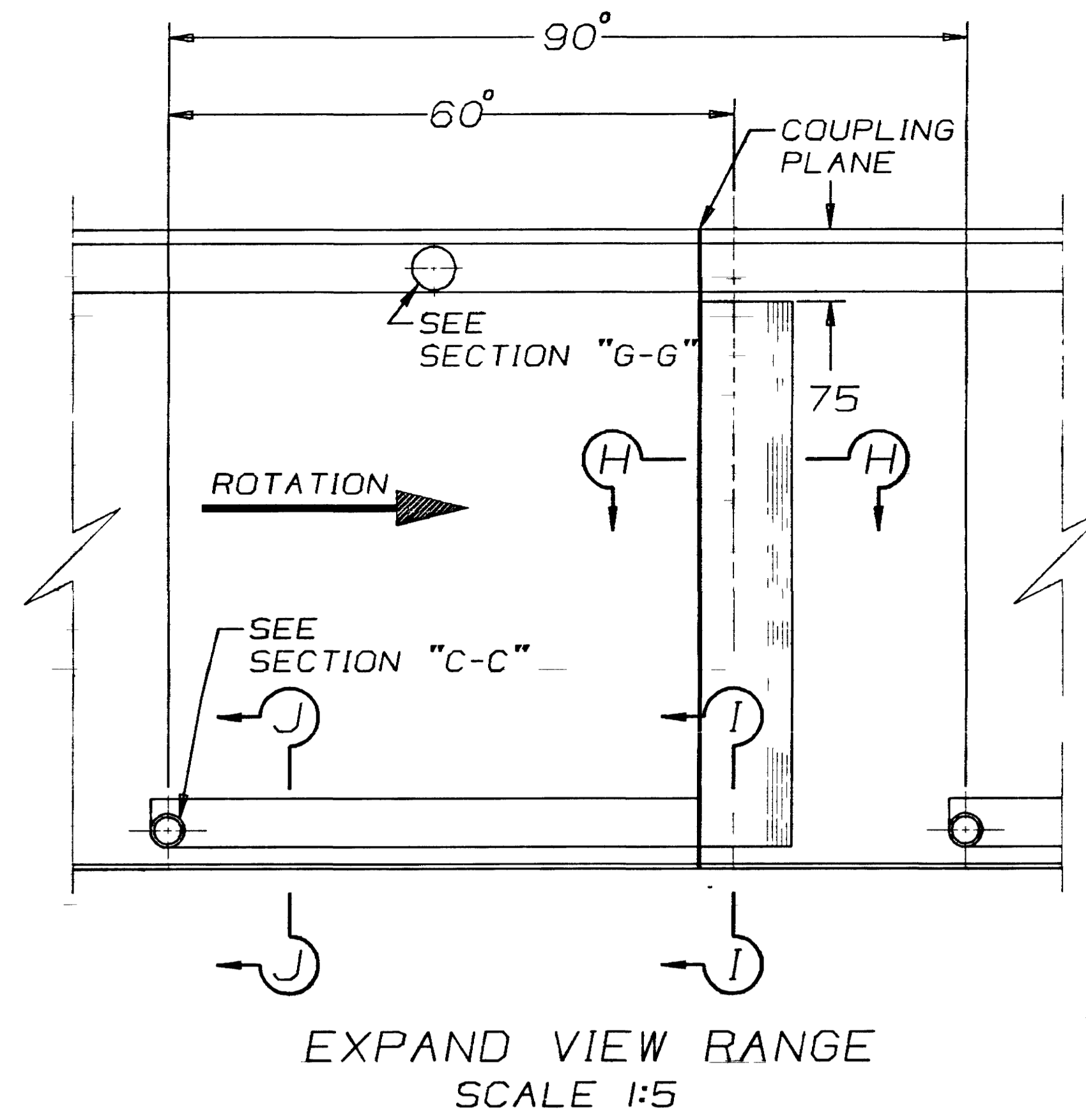
MODEL NO.: 16161013

APPROVED BY THE ENGINEER
DATE: 870501

THIS DOCUMENT IS THE PROPERTY OF MARINE INDUSTRIE LTEE. IT MAY NOT BE REPRODUCED OR TRANSMITTED TO OTHERS WITHOUT AUTHORIZATION.

ENG: G.W. DATE: 2.200.86
M.I.L. DRAWING NO. 161-161-01-3 1/2
DESIGN: J.N. REV. B

REVISIONS	A	LOC	23 FEV 87	OUTE	B	LOC	25 MARS 87	DSTG
	A1	SD	HOLES FOR HANDLING ADDED		B1	7-D	RTD & FOXBORO IDENTIFIED	
					B2	4-B	2 WAS 4 HOLES	
					B3	2-B	11 WAS 7 DIA	
					B4	7-B	2 HOLES 11 DIA ADDED	



ON EACH FLANGE, 2 HOLES 38,00^{+0.03} DIA. BORE BY PAIR OF FLANGE, SPOTFACE 70 DIA. FOR MK 5, 6 & 7

ON EACH FLANGE, 4 HOLES M12 X 1,75 X 20 DEEP. USE MK 2 AS TEMPLATE.

ON EACH FLANGE, 3 HOLES 38 DIA. BORE, SPOTFACE 70 DIA. FOR MK 4 & 7

DETAIL OF DRAWING NO.:		
DRAWINGS LISTED BELOW COMPLETE THIS DRAWING.		
MARK	DESCRIPTION	DRAWING M.T.L.

WORK	DATE	UNIT	TOTAL	REMARKS
MATERIAL REQUIRED FOR:				
 MARINE INDUSTRIE LTEE TRACY P.O. CANADA SNC/HERGES N° 7161-1602-VD-MIL-187-01 HYDRO-ELECTRIC MATERIAL DIVISION				
NATIONAL HYDROELECTRIC POWER CORPORATION LTD CHAMBERA HYDROELECTRIC PROJECT 3 TURBINES 185 MW - 214.3 RPM - HEAD 185 M. SPECIFICATION 7161-4-4500-T5-001-00				
AS BUILT IN SHOP				
GUIDE BEARING MACHINING				
SCALE	DATE	M.T.L. DRAWING NO.	REV.	

REVISIONS	A	LOC	22-10-86	B	15-10-87	B	11
	A	8B	DIM WAS 205	B	3,60	SECTION HH MODIFIED	

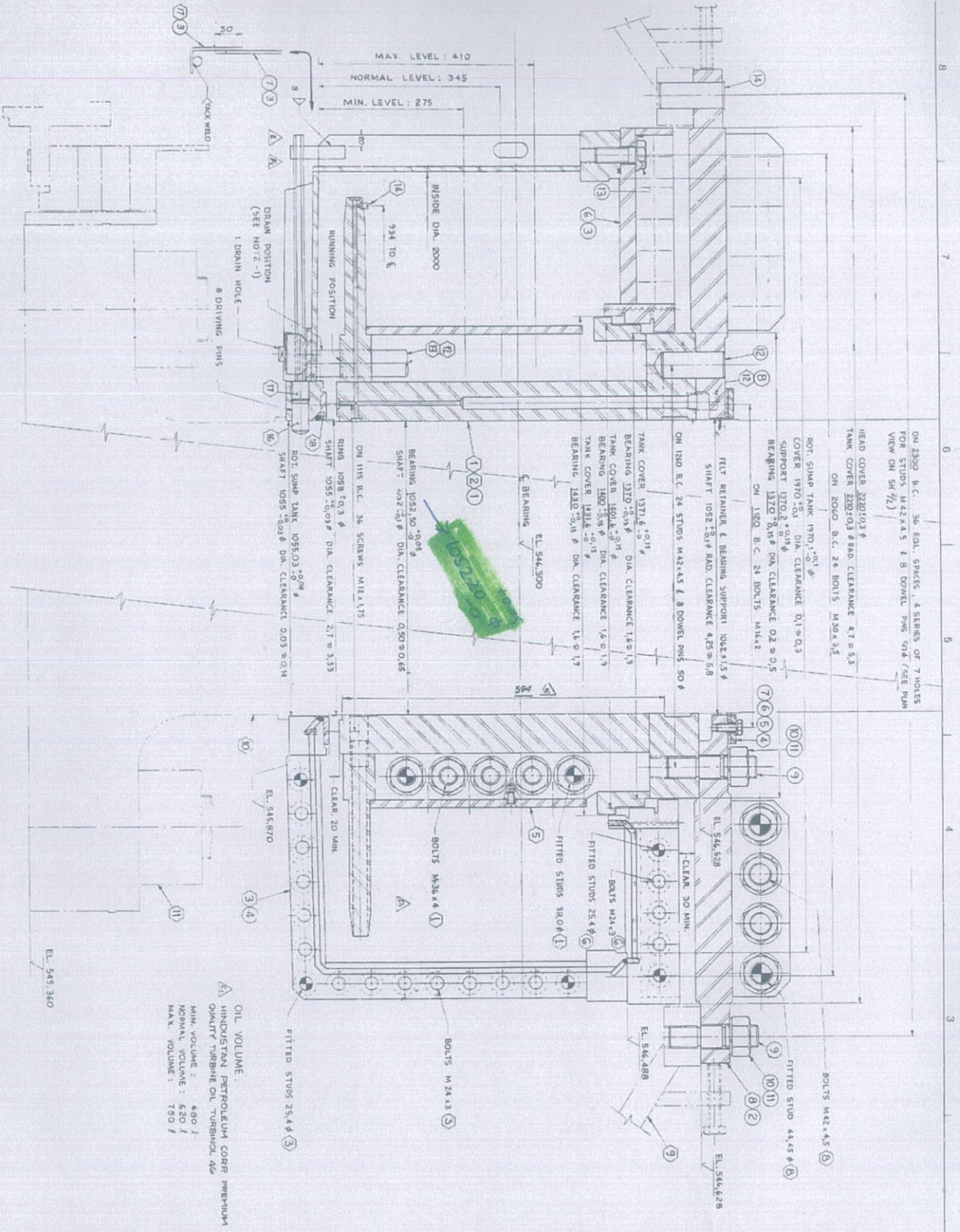
APPROVED BY THE ENGINEER
DATE: 27 02 17

THIS DOCUMENT IS THE PROPERTY OF MARINE INDUSTRIE LTEE. IT MAY NOT BE REPRODUCED OR TRANSMITTED TO OTHERS WITHOUT AUTHORIZATION.

Pour Exécution
MODEL NO.: 16161013

P.H. 154 DRW. NO. 161-161-01-3 2/2

U#1 Shell Arrangement Dwg.



SECTION A-A (2)

OIL VOLUME:
 HINDUSTAN PETROLEUM CORP. PREMIUM
 QUALITY TURBINE OIL TURBINE OIL
 MIN. VOLUME: 400 J
 NORMAL VOLUME: 650 J
 MAX. VOLUME: 780 J

OF 14 OF DRAWING NO. 161-161-01-01

NO.	DESCRIPTION	REV.
1	GUIDE BEARING MACH.	161-161-01-01
2	GUIDE BEARING, FAB.	161-161-01-02
3	ROTATING SHIM TANK	161-161-01-03
4	SEAL FELT RETAINER	161-161-01-04
5	BEARING COLLAR PLATE	161-161-01-05
6	ROTATING SHIM TANK COVER	161-161-01-06
7	COOLANT CIRCULATION (CENTRAL)	161-161-01-07
8	GUIDE BEARING SUPPORT	161-161-01-08
9	HEAD COVER MACH.	161-161-01-09
10	SHAFT MACHINING	161-161-01-10
11	RUNNER/SHAFT COUPLING ASSEMBLY	161-161-01-11
12	GUIDE BEARING INSUPPORT/RETAINER	161-161-01-12
13	OIL GENERATING UNIT CANCELLED	161-161-01-13
14	FERRILE	161-161-01-14
15	GUIDE BEARING TOOLING	161-161-01-15
16	THRUST BEARING SUPPORT	161-161-01-16
17	DRIVING PINS	161-161-01-17
18	SCREW	161-161-01-18
19	RETAINING RING	161-161-01-19
20	GUIDE BEARING SHAFT SEAL	161-161-01-20
21	DECONTAMINATING/WARNING	161-161-01-21

NOTE
 1. GUIDE BEARING OIL DRAIN Suction PIPE
 FIRST BE RELOCATED TO BEARING DOGS-
 THIS AFTER FINAL OIL DRAWING OR
 RECYCLING

NO.	DESCRIPTION	REV.
1	DOUGLAS	161-161-01-01
2	DOUGLAS	161-161-01-02
3	DOUGLAS	161-161-01-03
4	DOUGLAS	161-161-01-04
5	DOUGLAS	161-161-01-05
6	DOUGLAS	161-161-01-06
7	DOUGLAS	161-161-01-07
8	DOUGLAS	161-161-01-08
9	DOUGLAS	161-161-01-09
10	DOUGLAS	161-161-01-10
11	DOUGLAS	161-161-01-11
12	DOUGLAS	161-161-01-12
13	DOUGLAS	161-161-01-13
14	DOUGLAS	161-161-01-14
15	DOUGLAS	161-161-01-15
16	DOUGLAS	161-161-01-16
17	DOUGLAS	161-161-01-17
18	DOUGLAS	161-161-01-18
19	DOUGLAS	161-161-01-19
20	DOUGLAS	161-161-01-20
21	DOUGLAS	161-161-01-21

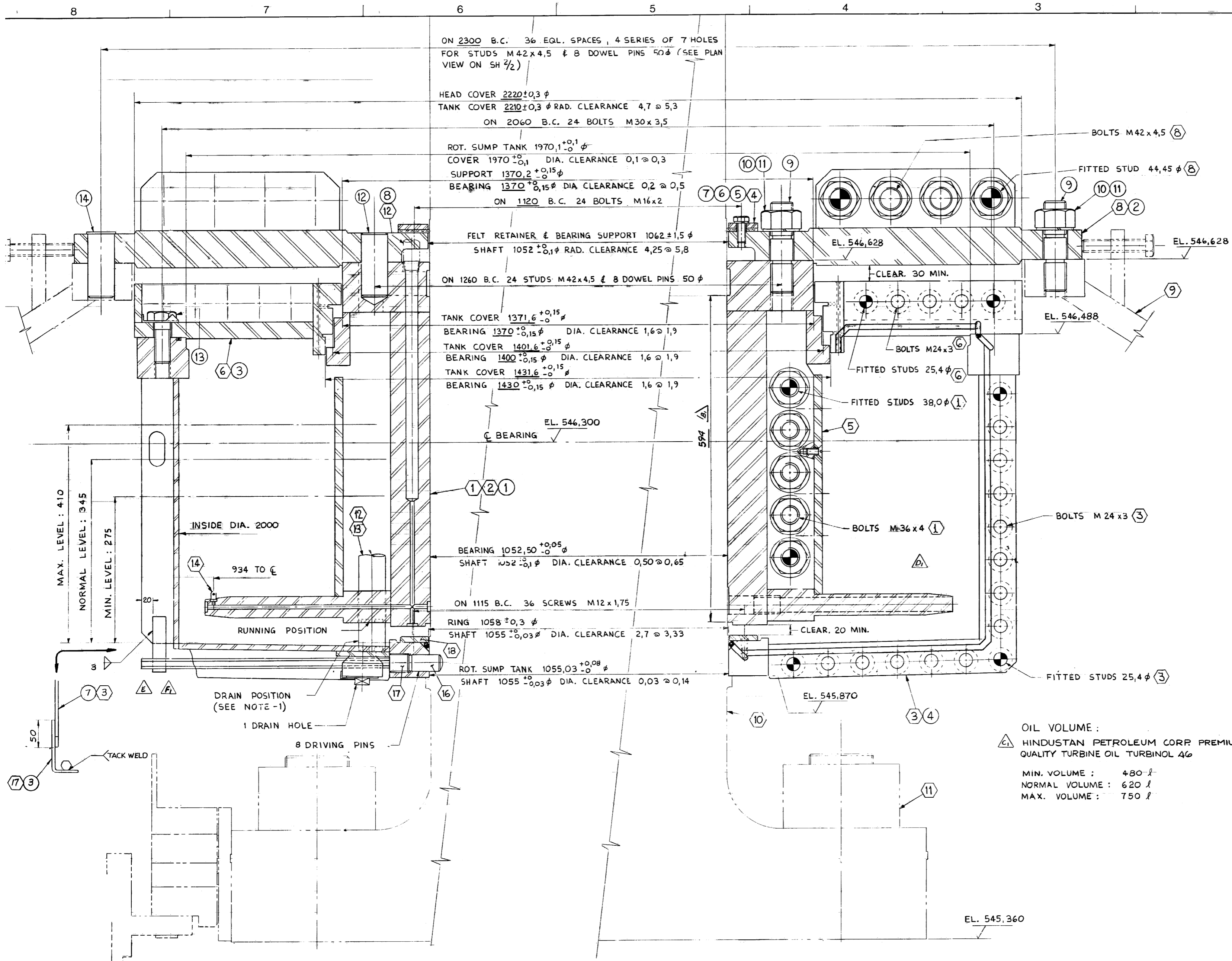
APPROVED BY THE ENGINEER
 DATE: 21/01/08

SL **POUR EXAMINATION**

MARINE INDUSTRIAL LTD.
 TRACY P.O.
 HYDRO-ELECTRIC MATERIAL DIVISION

AS BUILT IN SHOP
 TURBINE GUIDE
 BEARING ASSEMBLY

161-161-01-01



SECTION "A-A" (SH. 2)

DETAIL OF DRAWING NO.		
DRAWING(S) LISTED COMPLETE THIS DRAWING		
MARK	DESCRIPTION	M.I.L. NO.:
1	GUIDE BEARING MACH.	161-161-01-3
2	GUIDE BEARING FAB.	161-161-01-2
3	ROTATING SUMP TANK	161-161-03-1
4	SEAL FELT RETAINER	161-161-05-1
5	BEARING COLLAR PLATE	161-161-13-1
6	ROTATING SUMP TANK COVER	161-161-04-1
7	COOLING CANCELLED (EVENTUAL)	161-161-10-0
8	GUIDE BEARING SUPPORT	161-162-01-1
9	HEAD COVER MACH.	161-132-01-3
10	SHAFT MACHINING	161-152-01-3
11	RUNNER/SHAFT COUPLING ARRGT	161-152-10-0
12	GUIDE BEARING INSTRUMENTATION	161-168-01-1
13	OIL GENERATING UNIT CANCELLED	161-185-70-1
14	FERRULE	GEN-281-05
15	GUIDE BEARING TOOLING	161-169-01-1
16	THRUST BEARING SUPPORT	161-133-01-1
17	DRIVING PINS	161-161-06-1
18	SCREW	161-161-07-1
19	RETAINING RING	161-161-21-1
20	GUIDE BEARING SHAFT/SEAL DISMANTLING/HANDLING	161-198-04

NOTE
1- GUIDE BEARING OIL DRAIN SUCTION PIPE MUST BE RELOCATED TO RUNNING POSITION AFTER EACH OIL DRAINING OR RECYCLING

NO.	QTY	DESCRIPTION	UNIT	TOTAL	REMARKS
14	8	DOWEL PIN 50 φ			SEE (8)
13	24	BOLT M 30x3,5			SEE (6)
12	8	DOWEL PIN 50 φ			SEE (8)
11	52	LOCK WASHER 1 3/4" N.D.			SEE (1, 3)
10	52	NUT M 42x4,5			SEE (1, 3)
9	52	STUD M 42x4,5			SEE (1, 3)
8	1	INSTRUMENTATION			SEE (12)
7	24	LOCK WASHER 5/8" N.D.			SEE (4)
6	24	BOLT M 16x2			SEE (4)
5	1	SEAL FELT RETAINER			SEE (4)
4	1	SUMP TANK			SEE (3)
3	1	SUMP TANK COVER			SEE (6)
2	1	BEARING SUPPORT			SEE (8)
1	1	GUIDE BEARING			SEE (1, 2)

MAT'L REQ. FOR: 1 UNIT

MARINE INDUSTRIE LTEE
TRACY, P.Q.
CANADA

HYDRO-ELECTRIC MATERIAL DIVISION

NATIONAL HYDROELECTRIC POWER CORPORATION LTD
CHAMBERA HYDROELECTRIC PROJECT
3 TURBINES 85 MW - 24,3 RPM - HEAD 185 M.
SPECIFICATION 716-4-4500-TS-001-00

SCALE: 1:25
DATE: 85-11-11
AS BUILT IN SHOP
D.B. CHECKED

MAY 9-86	RC	8	6 NOV 86	C	Loc 23	FEV. 87	DRG	E	Loc NOV 20 87	DRG	F	Loc 15 DEC. 1987	DRG	4	
GENERAL REVISION	8	50	DIM WAS 525	C	3B	QUALITY OF OIL MODIFIED	D	3C	GROVE FOR O-RING ADDED	E	76	SUMP TANK LOCKING SYSTEM MODIFIED	F	86	MK 15 CANCELLED
				C2	RC	(8) ADDED									
						SEE (8) & PROCEDURE									

APPROVED BY THE ENGINEER
DATE: 87 04 08

SI

DESIGN: 1/10
DATE: 85-11-18

M.I.L. DRAWING NO. 161-161-01-0 1/2