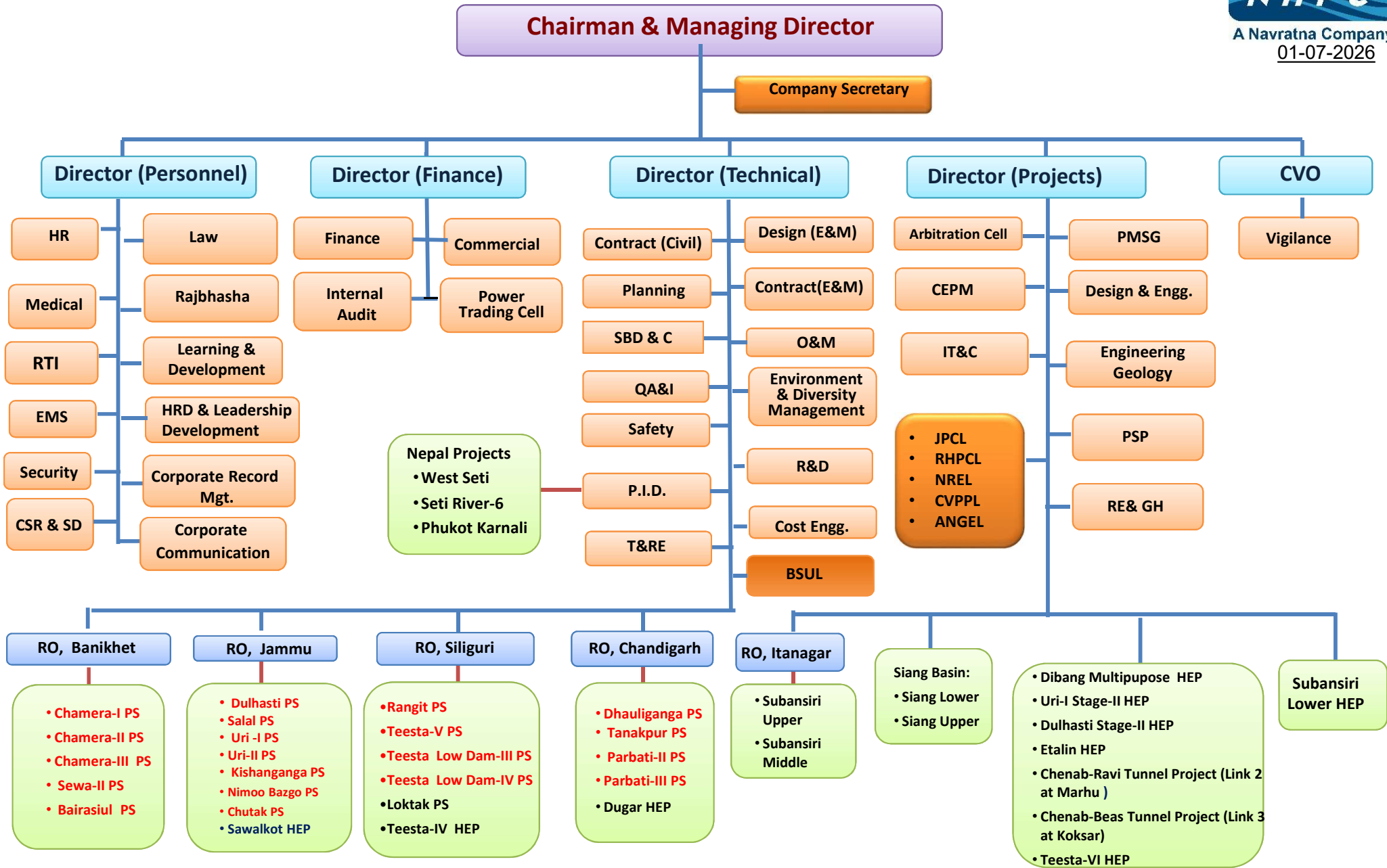


ORGANIZATION STRUCTURE



Note:

- 1) Regional EDs report to Director (Technical) for Power Stations and Survey & Investigation Projects except Sawalkot HEP, Dugar & Rangit PS. Rangit PS shall report to Director (Technical) through ED Rangit IV.
- 2) Regional EDs report to Director (Projects) for Construction Projects and for all Electro-Mechanical works, will functionally report to Director (Technical).