



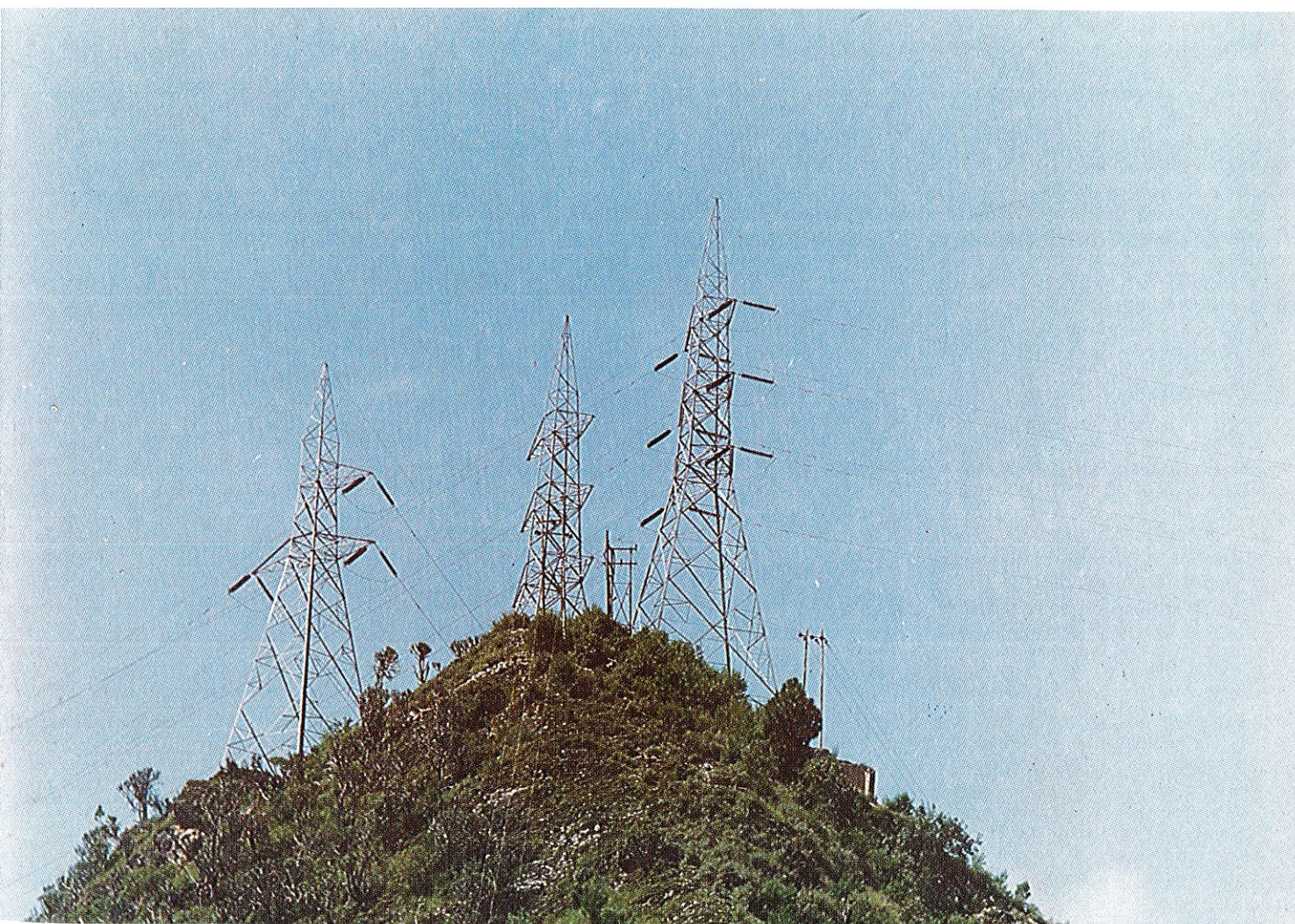
National Hydroelectric
Power Corporation Ltd.



ELEVENTH ANNUAL REPORT
1986-87

CONTENTS

Board of Directors	2
Chairman's Speech	3
Directors' Report	5
Accounts	14
Auditors' Report	29
Comments of the Comptroller & Auditor- General of India	33



BOARD OF DIRECTORS

Chairman & Managing Director

Shri B.R. Oberoi

Directors

Shri K.K. Kashyap
Director (Technical)

Shri O.P. Sarbhoy
Director (Personnel)

Shri R. Rajagopalan
Director (Finance)
(upto 16.11.86)

Shri Ghansham Das
Director (Finance)
(from 31.7.87)

Shri Satish Khurana
(upto 4.5.87)

Shri V.K. Khanna
(from 9.6.87)

Shri K. Madhavan

Shri J.C. Gupta

Company Secretary & Chief (Law)

Shri N.V. Raman

AUDITORS:

Statutory Auditors:

M/s. V. Malik & Associates
GF-12, Mansarover,
90-Nehru Place,
New Delhi-110 019.

Branch Auditors

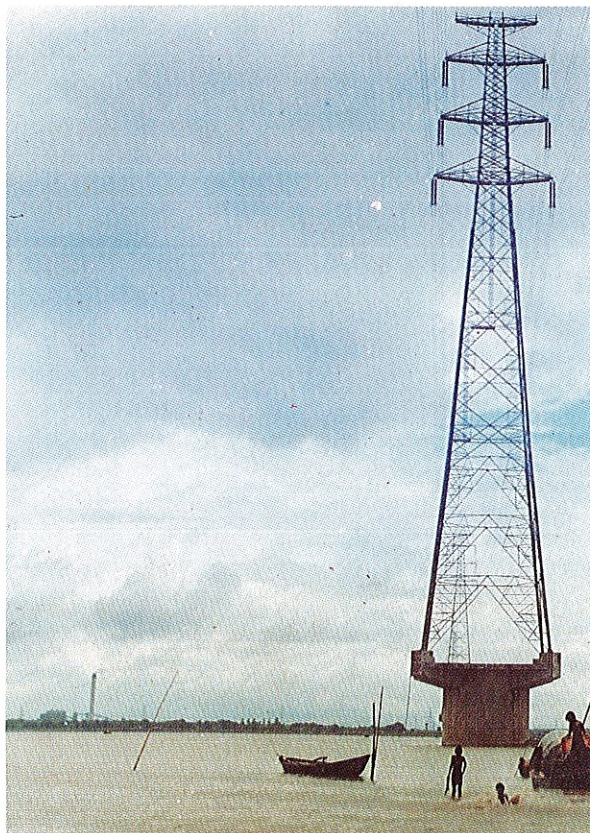
- i) G.S. Mathur & Co.
168-Golf Links
New Delhi-110 003.
- ii) M/s. S.K. Singhanian & Co.
19-A Chowringhee Road,
Calcutta-700 087

Bankers

State Bank of India
Punjab National Bank

Registered Office

Hemkunt Tower
98-Nehru Place,
New Delhi-110 019.



View of a 400 KV Transmission Tower with deepest foundation, crossing the mighty Ganga at Farakka

CHAIRMAN'S SPEECH



Dear Friends,

It gives me great pleasure to welcome you to the 11th Annual General Meeting of your Corporation. The audited accounts for the year 1986-87, the Directors' Report along with Auditors' Report and the comments of the Comptroller and Auditor-General of India are before you for consideration and adoption.

Your Corporation has shown a net profit of Rs. 19.25 crores during the year under review. The operating units of the Corporation as well as Chukha Transmission System sold power worth over Rs. 60 crores. The Corporation made a contribution of Rs. 22.17 crores to the Public Exchequer during the year.

To cope with the expanding activities of the Corporation, the Board of Directors have decided that the authorised share capital of the Company may be raised from Rs. 800 crores to Rs. 2000 crores. The proposal has been submitted to the Government for approval. The 7th Five Year Plan allocation for the

Projects being executed by your Corporation is likely to be raised from Rs. 1500 crores to over Rs. 2840 crores. The revised allocation will enable the Corporation to speed up work on the on-going projects and also take up a number of new projects.

The operating units of the Corporation achieved a record capacity utilisation of over 88% during 1986-87 as against 79% during 1985-86 and generated 1206 million units of power. Bulk power received from the Chukha Hydroelectric Project in Bhutan is being regularly supplied through the Chukha Transmission System of your Corporation to the beneficiary States.

Your Corporation's first issue of Bonds was an overwhelming success and the public issue was oversubscribed by about 50%. Your Corporation will be raising funds again through Bonds, aggregating Rs. 130 crores during the current financial year.

With the completion of the work on all major components, the Corporation is now getting ready for the trial run of the Salal Hydroelectric Project during October. The Corporation has been executing the Salal Project on Agency basis on behalf of the Government of India. It is hoped that all formalities for the formal transfer of Salal Project to your Corporation on ownership basis will be completed speedily. The commissioning of the Salal Project will mark the beginning of hydro power development of the Chenab basin by your Corporation. The experience of the geological conditions gained at the Salal Pro-

jects will greatly help in the execution of other major projects in this basin.

Construction activities are now in full swing at the Chamera Hydroelectric Project (Stage-I). The Ravi River has been partially diverted to enable start of the excavation work on the main dam. Erection of the 400 KV Chamera Transmission Line is also progressing as per schedule.

At Tanakpur Project, the Sarda River was successfully diverted on 20th December, 1986. For the execution of the Dulhasti Project on turnkey basis, with foreign bilateral assistance, your Corporation issued a Telex of Intent, based on Government approval, to the French Consortium. Detailed contract documents, however, could not be finalised so far. The Corporation is continuing its efforts with the help of Government of Bihar to acquire land for the Koel Karo Project.

The Uri Project has been techno-economically cleared and Government of India have sanctioned Rs. 25.5 crores for taking up pre-construction work. A field organisation headed by a Chief Engineer has been established and work on land acquisition, compensatory afforestation, construction of residential and non-residential buildings, roads, power for the pre-construction works and work of detailed investigations have been taken up. Simultaneously, the proposals received for execution of the Project with foreign bilateral financing, on turnkey basis are being examined by a high level Steering Committee appointed by the Government.

The execution of the 300 MW Chamera HE Project (Stage-II) in Himachal Pradesh has been entrusted to your Corporation. Proposals for Canadian assistance for this Project, as in the case of Chamera Stage-I, are under consideration.

Jammu & Kashmir Government have agreed for the execution of 450 MW Baglihar and 600 MW Sawalkot Projects by NHPC. The Corporation has started pre-construction investigation works at these Projects. A field organisation to start investigation and pre-construction work at the 60 MW Rangit Project in Sikkim, pending investment decision, has been set up. Investigation of the 390 MW Kishanganga Project in J&K has also been taken up. The investigation work at the various sites in the Sarda Valley, in U.P. is also continuing.

In the field of erection of transmission lines, the main achievement during the year was the completion of 220 KV Chukha Transmission System. The 400 KV Malda-Farakka Line was successfully commissioned in July, 1987. This line has been initially charged at 220 KV. Power through this System is now flowing to the beneficiary States. Work on

other transmission lines including 400 KV Jeypore-Talcher (Orissa), 400 KV Chamera-Moga, 400 KV Dul Hasti, 220 KV Tanakpur-Bareilly and 132 KV Liematak-Jiribam lines are in progress. During the year, the Corporation also completed the 132 KV Udhampur-Kishtwar Transmission Line in J&K. The Government of India have decided that transmission system associated with the Nathpa-Jhakri Project in Himachal Pradesh should be constructed by NHPC. The Corporation has also been awarded the work of erection of 220 KV Phuntsholing-Birpara Transmission Line associated with the Chukha Hydro-electric Project.

I am glad to inform you that your Corporation has completed the Nuwakot Rural Electrification Project in Nepal in a record period and about a year ahead of schedule. The Corporation has now been asked to undertake similar work in a few more villages in the same area.

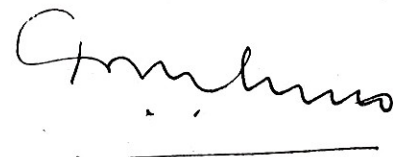
Your Corporation has been laying emphasis on the protection of environment at its various projects. Schemes for compensatory afforestation have been drawn up for each Project and are being implemented.

The Computer Centre set up at the Corporate Office is now fully operational and your Corporation is also exploring the possibility of having its own satellite telecommunication network.

Your Corporation has been able to maintain cordial industrial relations with the active cooperation of the employees. Efforts are continuing to provide in-depth training to the employees. Steps have also been taken to make progressive use of the official language.

I take this opportunity to express our sense of gratitude to the Hon'ble Union Minister of Energy, Hon'ble Union Minister of State for Power, Secretary (Power) and various Central and State Agencies for the guidance and support extended by them in all our endeavours. I am also grateful to all of you for your active involvement in the Corporation.

I would like to make a special mention of the dedication and team work of all our executives, staff and workmen which enabled the Corporation to progress well.



(B.R. Oberoi)
Chairman & Managing Director

New Delhi
Date: 28th September 1987.

DIRECTORS' REPORT

TO THE SHAREHOLDERS

Your Directors have great pleasure in presenting the 11th Annual Report along with the audited statement of accounts for the year ended 31st March, 1987.

2. PERFORMANCE

A. FINANCIAL PERFORMANCE:

(1) The financial performance of the operating units for the year was as under:

	(Rs. in lakhs)
Gross profit before providing for depreciation and interest	4141.23

Less:

i) Depreciation	429.02	
ii) Interest on Govt. Loans	1806.47	
iii) Preliminary expenses written off	4.00	2239.49

Net profit for the year	1901.74
Prior period adjustments (Net)	23.18
Net profit	1924.92

The contribution from the Corporation to the public exchequer during the year was Rs. 22.17 crores, which includes payment of interest on Government loans.

(2) Issue of Bonds:

As was mentioned in last year's report, during 1986-87, the Corporation floated 7-year 14% secured, Non-convertible, Redeemable Bonds for an amount of Rs. 125 crores comprising Rs. 60 crores through public issue and Rs. 65 crores through private placement with financial and other institutions. Against this, the Corporation was able to collect Rs. 89.0929 crores through public issue and Rs. 54.55 crores through private placement with financial and other institutions. The Corporation was permitted by the Govt. of India to retain the excess subscription of Rs. 29.10 crores in the public issue, thus raising the total subscription to Rs. 143.6429 crores.

During the year 1987-88, the Corporation proposes to raise resources to the extent of Rs. 130 crores by issue of a second series of Secured, Non-convertible, Redeemable Bonds in accordance with the Government of India guidelines.

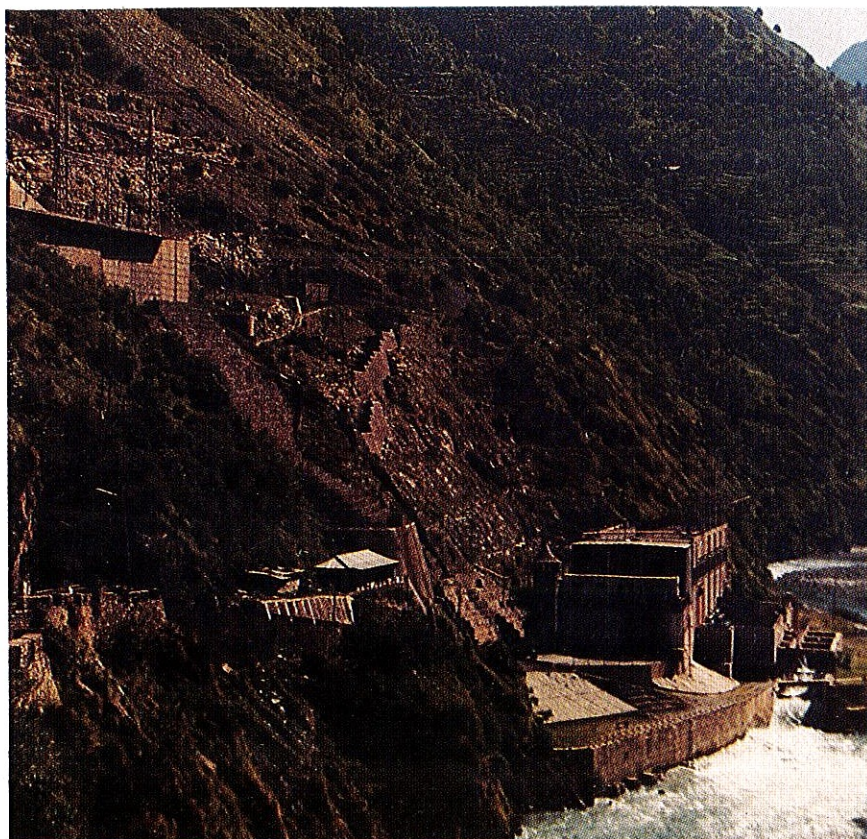
B. POWER STATIONS UNDER OPERATION:

(1) Baira Siul Power Station (HP):

The Baira Siul Power Station generated 808.26 million units of energy during the year under review against the target of 750 million units. The capacity utilisation during the year was 87.85%.

(2) Loktak Power Station (Manipur):

The Loktak Power Station generated 398.567 million units of energy against the target of 410 million units. Even though more energy could be



Overview of Power House—Baira Siul Project (H.P.)

generated at Loktak Power Station, the actual generation was restricted due to Transmission Line constraints. Detailed discussions have been held with the Assam State Electricity Board, Electricity Department of Manipur and other agencies for uninterrupted availability of their Transmission System for evacuation of power from Loktak. The capacity utilisation during the year was 88.97%.

C. ON-GOING HYDROELECTRIC PROJECTS:

(1) Salal H.E. Project (345 MW) J&K:

All major works of the Salal Hydroelectric Project have been completed except a small portion of the Tail Race Tunnel, which is in progress and is likely to be completed by September/October, 1987. Reservoir of the Project has been filled to FRL 486 M and water is over flowing from the spillways. Erection of generating units has been completed and testing works are in progress.

As soon as the balance works on the Tail Race Tunnel are completed, trial run of the generating units will be taken in hand.

(2) Dulhasti H.E. Project (390 MW) J&K:

Against a total requirement of 339.5 ha. of private land, 126.85 ha. have been acquired.

Pilot Tunnel has been excavated upto a length of 754 M by the end of the year, against a total length of 1400 M. The work of development of infrastructure continued satisfactorily during the year.



Based on Government approval, Telex of Intent was issued to the French Consortium in December, '86 for the construction of the Project on turnkey basis. Detailed contract documents could not be finalised so far.

(3) Tanakpur H.E. Project (120 MW) U.P.:

During the year, Government clearance for transfer of 293.35 ha. of Forest Land was received. It was, therefore, possible for the project to start work on major structures of Barrage and Power House. Sarda River was successfully diverted on

20th Dec., '86. The work on 3 weir bays, 3 under sluice bays and Head Regulator had been started. The excavation in the main pit of the Power House was started in October, '86 and a total of 625 TM³ out of 650 TM³ of excavation had been completed.

(4) Chamara H.E. Project (540 MW) H.P.:

The work on the Diversion Tunnel of the Project was completed in July, 1987 and river diversion effected on 4th August, 1987.

Work on the concrete Dam is in



(5) Koel Karo H.E. Project (710 MW) Bihar:

The work on the Project could not be started so far due to the resistance of the local people against land acquisition. A writ petition filed in the Supreme Court, on behalf of the local people, is also pending disposal. However, efforts are continuing to be made by the Corporation with the help of the State Government for resolving the problem.

D. NEW HYDROELECTRIC PROJECTS:

(1) Uri H.E. Project (480 MW) J&K:

The techno-economic clearance for the Project was received in July, 1986. Government sanction for execution of pre-construction works was accorded in December, 1986.

With the establishment of the field organisation in November, 1986, work on land acquisition, compensatory afforestation, construction of residential and non-residential buildings and roads, construction power and certain pre-construction investigations like hydrological and meteorological investigations have been taken up.

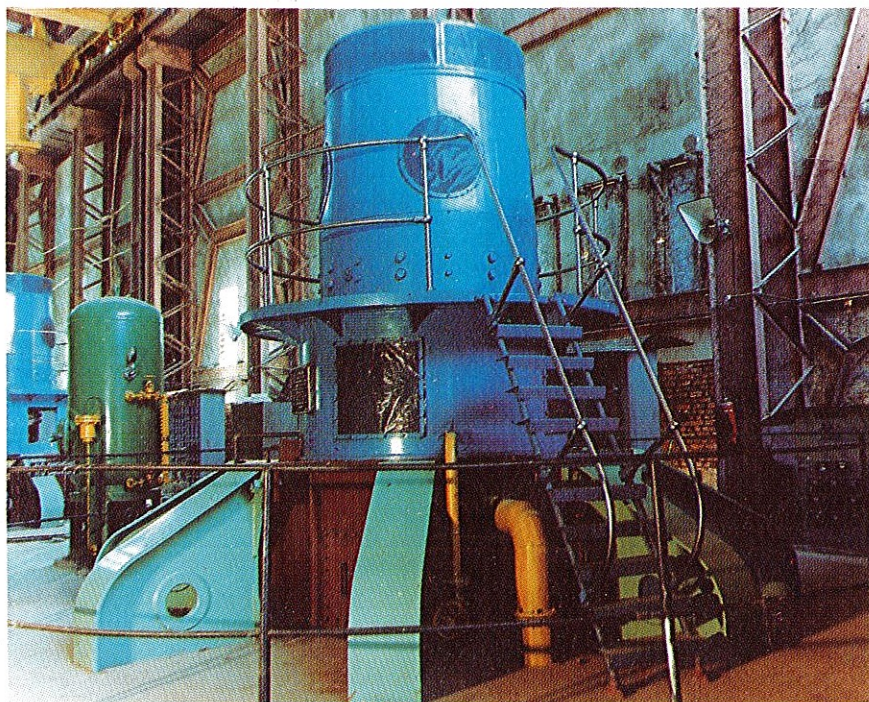
Offers received for bilateral assistance for the execution of the Project on turnkey basis are being evaluated by the Steering and Negotiating Committee constituted by the Government of India.

(2) Chamera H.E. Project (Stage-II) (300 MW) H.P.:

In February 1987, the Government of India approved that the

progress. On 6.4 km power Tunnel 300 M length of power Tunnel has been completed. Adit-I has been completed. Work on Adit-II is in progress, and about 64% of the work has been completed. 1231 M long access Tunnels to Power House Complex were completed in April, 1987, while work on the Power House is in progress.

On 2.4 km long Tail Race Tunnel, 70% work on Adit to the Tunnel has been completed. 45 M of heading of Tail Race Tunnel from outlet end and Power House end has also been completed.



Interior view of Power House—Loktak Project (Manipur).



Excavation of Tail Race Tunnel—Chamera Project (H.P.).

Chamera H.E. Project Stage-II (300 MW) would be executed in the Central Sector by the Corporation.

(3) Baglihar H.E. Project (450 MW) and Sawalkot H.E. Project (600 MW) J&K.:

These two Projects were entrusted to the Corporation by the Government of India in December, 1984 for implementation in the Central Sector. The Corporation is taking steps to obtain environmental and forest clearances for the Projects and the approval of the Public Investment Board will be sought thereafter.

(4) Rangit H.E. Project Stage-III (3×20 MW) Sikkim:

Investment sanction of the Government of India is awaited for execution of the Rangit H.E. Project in Sikkim.

Various pre-construction activities, confirmatory investigation like, Drilling and Drifting, and other infrastructure works like Accommodation, Power, Water Supply, Stores sheds, roads etc. have been taken up.

(5) Salal H.E. Project Stage-II (345) MW in J&K:

The Government of India has also entrusted the execution of the Salal H.E. Project Stage-II to NHPC.

(6) Dhauliganga H.E. Project Stage-I (4×65 MW) U.P.:

The field investigations of the Dhauliganga HE Project Stage-I (4×65 MW) in U.P. was completed in collaboration with Swedpower, Sweden and the Feasibility Report submitted to CEA for techno-economic clearance which is awaited. The

environmental and forest clearances are also awaited.

(7) Dhaleswari H.E. Project (120 MW) Mizoram:

The Dhaleswari H.E. Project (120 MW) in Mizoram was entrusted to the Corporation in December, 1984 for implementation in the Central Sector. The investigation of this Project was carried out by NHPC and the Feasibility Report submitted to the Government of India in October, 1984.

E. HYDROELECTRIC PROJECTS UNDER INVESTIGATION:

(1) Kishan Ganga H.E. Project (390 MW) J&K

The estimate for the investigation of the Project for Rs. 437.14 lakhs (Gross) and Rs. 372.14 lakhs (Net) has been concurred in by CEA/CWC in July, 1987. The sanction of the Government of India is awaited.

(2) Goriganga H.E. Project (160 MW) U.P.:

In October, 1986, the Government of India sanctioned the Investigation estimates of Goriganga H.E. Project Stage-I for an amount of Rs. 226 lakhs. Work on infrastructural development and topographical survey, have been completed. Geological and Geotechnical investigations like drilling and drifting and geological mapping are in progress.

(3) Dhauliganga H.E. Project Intermediate Stage (380 MW) U.P.:

Investigation work of the Project has been taken up. Drilling and

Drifting work is in progress. The estimate for the investigation amounting to Rs. 236 lakhs is awaiting Government sanction.

F. TRANSMISSION LINE PROJECTS:

(1) Chukha Transmission System:

The Corporation has commissioned the 220 KV Chukha Transmission Network well on time to evacuate power to the Eastern States from the Chukha Hydroelectric Project in Bhutan. The Chukha Transmission System was put on commercial operation w.e.f. 1st November, 1986. Power through this system had started flowing to West Bengal, Bihar, Orissa and Damodar Valley Corporation. As per Govt. of India directions, the Corporation is purchasing bulk power from Bhutan and distributes to the beneficiaries in

the Eastern Region through its transmission network.

400 KV Malda-Farakka Transmission Line has also been completed and commissioned in July, 1987.

(2) Rural Electrification works in Nepal:

The work relating to electrification of 64 villages in Nepal, entrusted to the Corporation in January, 1986 as an agent of the Govt. of India, was completed in July, 1987.

(3) Work on the following on-going transmission works progressed satisfactorily during the year:

(i) Transmission System associated with Dul Hasti Project:

— 400/220KV Sub-station at Kishenpur (220 KV Portion)

— 132/33 KM Sub-station at Kishtwar

— 132 KV S/C Udhampur-Kishtwar Transmission Line

Forest clearance for the 400 KV Transmission System has been obtained and detailed survey on the route of the transmission line has commenced. Engineering for the transmission line and sub-station has also started. An Agreement has been signed with M/s Technopromexport of USSR for obtaining consultancy for Dul Hasti Transmission Line passing through snow-bound terrain. Russian experts have visited the site for preliminary survey.

(ii) Jeypore-Talcher Transmission System:

— 400/220-KV Sub-station at Jeypore and Talcher and 400 KV Switching station at Indravati.

— 400 KV Jeypore-Talcher Transmission Line.

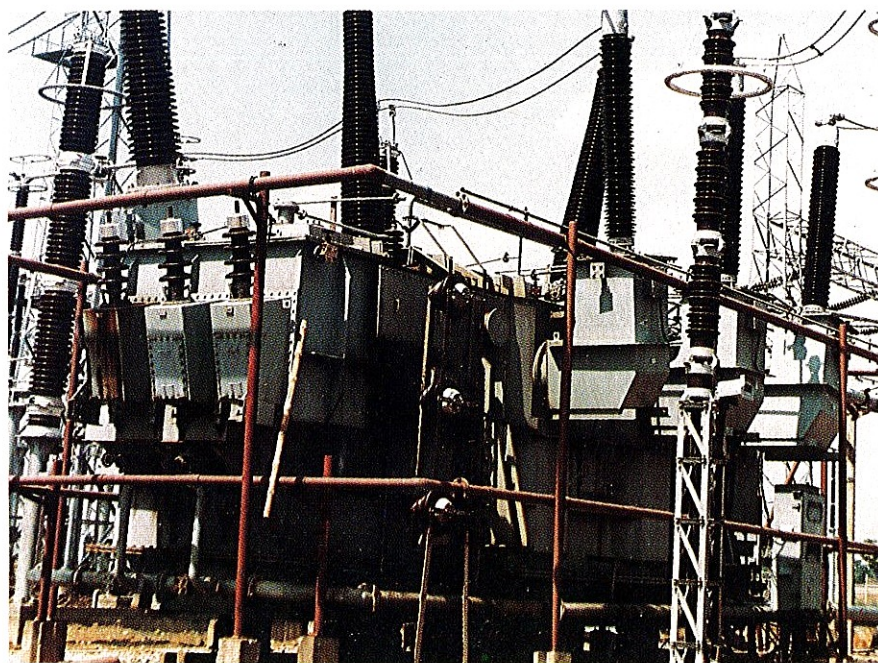
(iii) Transmission System for the Chamera Project:

— 400/220 KV Sub-station at Moga.

— 400 KV Chamera-Moga Transmission Line.

(iv) Transmission System associated with Tanakpur Project:

— 220 KV Tanakpur Bareilly Transmission Line.



View of 400 KV Transformer at Malda which is so far the biggest transformer installed in the country.

(v) 220 KV S/C Phuntsholing-Birpara Transmission Line.

(vi) 132 KV S/C Liematak Jiribam Transmission Line (second circuit).

(vii) 132 KV S/C Bongaigaon-Gaylephug Transmission Line.

(4) The revised estimates for 400 KV Uri Transmission System for Rs. 179.53 crores excluding IDC have been submitted to CEA for technoeconomic clearance.

(5) The revised estimates for the 132 KV Bongaigaon-Nanglam transmission line for Rs. 10.53 crores have been submitted to CEA/Ministry of External Affairs for approval. The concurrence of the CEA to the estimates has been received.

(6) The estimates of 400 KV D/C Moga-Bhiwani Transmission Line for an amount of Rs. 83.33 crores (net) excluding IDC of Rs. 11.80 crores has been cleared by CEA.

3. VIGILANCE ACTIVITIES:

The Corporation continued to give importance to the vigilance activities during the year. Inspections were carried out as part of vigilance work. As a result of investigations, disciplinary proceedings were initiated against erring officers for the award of major and minor penalties.

4. OFFICIAL LANGUAGE POLICY:

In accordance with the Official Language Policy of the Government



Inside view of Diversion Tunnel—Chamera Project (H.P.).

all efforts were made during the year for progressive use of Hindi in the Corporation. The Official Language Implementation Committee of Corporate Office met periodically to review the progress made in this direction.

5. PERSONNEL AND INDUSTRIAL RELATIONS:

(1) *Presidential Directive:*

In exercise of the powers conferred by Article 36 of the Articles of Association of the Corporation, the President of India issued a Directive during the year to the effect that the Corporation shall not adopt revised scales of pay, DA, allowances and other perquisites as have been or are being accepted by the

Government of India for its employees as such a course of action would pre-empt the recommendations of the High Power Committee constituted by the Government of India to go into such issues.

(2) *Industrial Relations:*

Industrial Relations during the year were generally cordial. A number of pending issues/disputes raised by the Trade Unions were resolved satisfactorily through bipartite discussions.

6. TRAINING AND DEVELOPMENT:

The Corporation is committed to a system of formal training and de-

velopment for its employees at various levels. The training and development activities have been considerably enlarged in scope and content.

The training and development activities included Managerial Development Programmes, Need based courses, Sponsored Programmes, Training at Manufacturers' works, O&M training, Induction Programmes, Refresher Courses, Training abroad etc. During the year about 1200 executives and non-executives have been trained in various disciplines.

7. OFFICE COMPLEX:

With a view to having the Corporate Office located in one building, the Corporation has acquired 3.90 acres of land from the Haryana Urban Development Authority for construction of office complex at Faridabad.

8. SOCIAL OVERHEADS:

Expenditure incurred on maintenance of townships, education and health facilities for the employees of the Corporation during the year is as under:-

	<i>Rs. in lakhs</i>
Townships	183.79
Education	16.47
Hospitals & Medical	
Reimbursement	56.20

9. AUDITORS:

For the audit of the accounts of the Corporation for the year 1986-87, M/s. V. Malik & Associates, New Delhi were reappointed as Statutory Auditors and M/s. G.S.

Mathur & Co., New Delhi and M/s. S.K. Singhanian & Co., Calcutta as Branch Auditors by the Government of India.

10. COMMENTS ON THE QUALIFICATIONS OF THE AUDITORS CONTAINED IN THEIR REPORT:

The comments of the Directors on the qualifications made by the Auditors in their Report are given in Annexure-I to this Report.

11. PARTICULARS OF EMPLOYEES:

Information as per Sec. 217(2-A) of the Companies Act, 1956 read with Companies (Particulars of employees) Rules, 1975 is given in Annexure-II forming part of this report.

12. DIRECTORS:

Shri R. Rajagopalan and Shri Satish Khurana ceased to be Directors on the Board of Directors with effect from 16.11.86 (AN) and 4.5.87 (AN) respectively. The Board place on record their appreciation of the valuable services rendered by Shri Rajagopalan and Shri Satish Khurana. Shri V.K. Khanna, Joint Secretary, Department of Power was appointed as a part-time Director of the Corporation with effect from 9.6.1987. Shri Ghansham Das took charge as Director (Finance) with effect from 31.7.1987.

13. ACKNOWLEDGEMENTS:

The Board acknowledge with thanks the guidance and help extended by the various Departments of the Government of India, particu-



Great emphasis is laid of Afforestation Programmes at different N.H.P.C. Projects—a view.

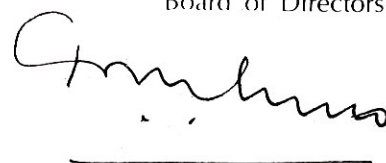
larly the Ministry of Energy (Department of Power), Ministry of Finance, Ministry of External affairs, the Ministry of Industry and Company Affairs (Department of Company Affairs), Embassy of India in Nepal, the Central Electricity Authority, the Central Water Commission, CSMRS, the Survey of India, and the Geological Survey of India. Thanks are also due to the HMG Nepal, CIDA, EDC and SNC/ACRES of Canada, SWED POWER AND SIDA of Sweden, the Royal Government of

Bhutan, the State Governments of West Bengal, Manipur, Mizoram, Jammu & Kashmir, HP, UP, Bihar, Sikkim, Maharashtra, Andhra Pradesh, Orissa and the State Electricity Boards who have been co-operating with us in our work in their States. But for the help, assistance and co-operation given by these and other agencies, it would not have been possible for the Corporation to achieve the progress registered so far. The Board of Directors are also grateful to the

Comptroller & Auditor-General of India, the Auditors and the Bankers for their valued co-operation.

The Board also take this opportunity to place on record their recognition and appreciation of the sincere and hard work done by the employees of the Corporation at all levels and for their continued enthusiasm which has been the main contribution towards the success of the Corporation.

For and on behalf of the
Board of Directors,



(B.R. OBEROI)
Chairman & Managing Director

New Delhi: 25th September, 1987

COMMENTS ON THE QUALIFICATIONS CONTAINED IN THE AUDITORS' REPORT, 1986-87.
**Para in
Auditors'
Report.**
Comments
II (e) (i)

Loss, if any, has not been provided as the part of the tunnel collapsed was only a small portion of the total water conductor system i.e. 35 metres out of the total of 6903 metres. Also, the collapse occurred only within very short time, i.e., 55 days, of the start of commercial operation of the project.

(v)

As per the legal advice, the liability for Bonus has not arisen and accordingly no liability has been created.

(vi)

Excess/short debits/credits by the Bank have been regularly followed with the bankers. Rectification, if any, has to be done by the Bank and the Corporation does not anticipate any adjustment in its books.

(vii)

Provision for loss, if any, will be made after determination of the actual loss.

(ix)

The assets/liabilities of Dhauliganga and Goriganga Projects are not to be incorporated in the Corporation's Balance-sheet as they are grant in Aid Projects.

(xi)

The Corporation does not anticipate any actual liability. The disputed claim has been shown under Contingent Liability.

(xii)

The shortage, if any, is under determination and will be accounted for after determination.

(xiii)

The Custom duty refund for Chamera has been taken up with the Customs Authorities. The refund has not materialised pending reconciliation and decision regarding applicability of relevant notification on some of the consignments. Pending settlement of the case, the amount has not been taken into accounts.

(xiv)

The claim for refund of rebate is being lodged with the concerned authorities after detailed reconciliation.

(xviii)

Depreciation for assets has not been provided pending receipt inspection, verification and accountal of assets.

(xix)

Provision, if any, for short and excess delivery of structure will be made after reconciliation of the accounts with the Fabricators and Transporters.

(xx)

Profit will be accounted for in terms of Accounting Policy No. 13A and the explanatory notes thereunder.

**Para in
Annexure to
Auditors'
Report.**
A (i)

The situational detail has been indicated in almost all the cases except for some items for which broad details have been given. Physical verification of fixed assets will be done in a phased manner wherever it has not been done.

(iii)

Physical verification of stores and spare parts will be carried out in the Projects/Units wherever it has not been carried out.

(vi)

Emphasis has been given to follow the laid down procedure.

(xi)

Internal Audit is being strengthened suitably keeping in view the size of the company and nature of business.

(xiii)

Pending receipt of details from the Projects/Units some of which are situated in farflung areas, PF dues have been deposited on an estimated basis keeping in view the earlier deductions. The same are being subsequently reconciled.

NOTE:

Also subject to Explanatory Notes on Accounts and Accounting policies.

BALANCE SHEET AS AT 31ST MARCH, 1987

(Rs. in thousands)

	Schedule	31.3.1987	31.3.1986
SOURCES OF FUNDS			
1. Shareholders' Funds			
(a) Capital	1	5,40,98,12	4,29,12,66
(b) Share Money Deposit		36,29,48	51,35,46
(c) Reserves and Surplus	2	<u>60,67,08</u>	<u>41,42,16</u>
		6,37,94,68	5,21,90,28
2. Grants-in-aid	3	96,81	1,04,54
3. Loan Funds			
(a) Secured Loans			
(i) 14% Bonds	4	1,43,64,29	
(ii) Interest accrued but not due on bonds under Cumulative interest scheme		52,82	
(b) Unsecured Loans	5	<u>2,62,76,18</u>	<u>2,17,73,49</u>
TOTAL		<u>10,45,84,78</u>	<u>7,40,68,31</u>
APPLICATIONS OF FUNDS			
1. Fixed Capital Expenditure			
(a) Fixed Assets	6		
Gross Block		4,87,36,08	3,37,16,03
Less : Depreciation		<u>51,73,77</u>	<u>33,55,82</u>
Net Block		4,35,62,31	3,03,60,21
(b) Capital work-in-progress	7	<u>3,47,83,51</u>	<u>2,30,26,93</u>
		7,83,45,82	5,33,87,14
2. Current Assets, Loans & Advances	8		
(a) Inventories		56,96,36	45,31,54
(b) Cash & Bank Balances		65,00,61	28,58,34
(c) Sundry debtors		53,84,50	48,43,25
(d) Other Current assets		1,25,59	13,39
(e) Loans & Advances		<u>1,49,91,34</u>	<u>1,43,40,93</u>
		3,26,98,40	2,65,87,45
Less : Current Liabilities and Provisions	9		
Liabilities		<u>64,79,45</u>	<u>59,30,33</u>
Net Current Assets		2,62,18,95	2,06,57,12
3. Miscellaneous expenditure			
(to the extent not written off or adjusted)	10	<u>20,01</u>	<u>24,05</u>
TOTAL		<u>10,45,84,78</u>	<u>7,40,68,31</u>
Notes to the Accounts & Contingent Liabilities	14		
Additional Information under part II of Schedule VI	15		
Schedules 1 to 15 and Accounting policy form an integral part of the Accounts.			

N.V. RAMAN
Secretary

GHANSHIAM DAS
Director (Finance)

B.R. OBEROI
Chairman & Managing Director

As per our report of even date attached
For V. MALIK & ASSOCIATES
Chartered Accountants

NEW DELHI
AUGUST 28, 1987

Vipin Malik
Partner



PROFIT AND LOSS ACCOUNT FOR THE YEAR ENDED 31ST MARCH, 1987

(Rs. in thousands)

	Schedule	31.3.1987	31.3.1986
INCOME			
1. Revenue from the sale of Electric Power		60,12,03	47,42,77
2. Miscellaneous Income	11	13,12	12,41
TOTAL INCOME		60,25,15	47,55,18
EXPENDITURE			
3. Purchase of Electric Power		7,61,70	—
4. Generation, Transmission & Administration Expenses	12	4,88,21	3,75,66
5. Employees' remuneration and benefits	13	3,66,89	3,00,43
6. Royalty charges		1,80,10	1,55,20
7. Sales Tax on generation		87,02	88,65
8. Depreciation		4,29,02	3,94,50
9. Interest on Loans		18,06,47	15,67,24
10. Preliminary expenses written off		4,00	4,00
TOTAL EXPENDITURE		41,23,41	28,85,68
11. Profit for the year		19,01,74	18,69,50
12. Add prior period adjustments (Net)		23,18	9,68
13. Profit before Income-tax & Statutory Appropriations		19,24,92	18,79,18
14. Provision for Taxation		—	—
15. Profit after tax and Statutory Appropriations		19,24,92	18,79,18
16. Add/(Less) profit/(loss) brought forward from previous year		17,97,42	(81,76)
17. Profit carried over to Reserves & Surplus		37,22,34	17,97,42

N.V. RAMAN
Secretary

GHANSHIAM DAS
Director (Finance)

B.R. OBEROI
Chairman & Managing Director

As per our report of even date attached
For V. MALIK & ASSOCIATES
Chartered Accountants

NEW DELHI
AUGUST 28, 1987

Vipin Malik
Partner

SHARE CAPITAL**SCHEDULE-1**
(Rs. in thousands)

Particulars	31.3.1987	31.3.1986
AUTHORISED CAPITAL		
80,00,000 Equity Shares of Rs. 1,000/- each	8,00,00,00	8,00,00,00
ISSUED, SUBSCRIBED AND PAID UP CAPITAL		
54,09,812 Equity Shares of Rs. 1,000/- each fully paid	5,40,98,12	4,29,12,66
(out of this 6,29,529 shares have been allotted for consideration other than cash and one share has been allotted for part consideration other than cash)		
	5,40,98,12	4,29,12,66

RESERVES AND SURPLUS**SCHEDULE-2**
(Rs. in thousands)

Particulars	31.3.1987	31.3.1986
1. Investment Allowance Reserve	23,44,74	23,44,74
2. Surplus as per Profit & Loss Account	37,22,34	17,97,42
	60,67,08	41,42,16

GRANTS-IN-AID**SCHEDULE-3**
(Rs. in thousands)

Particulars	31.3.1987	31.3.1986
GRANTS-IN-AID FOR INVESTIGATION OF HYDROELECTRIC PROJECTS		
1. Koel Karo	5,00	5,00
2. Dulhasti	5,00	5,00
3. Chamera	3,36,00	3,36,00
4. Dhaleshwari	1,66,84	1,66,84
5. Dhauliganga	3,71,31	2,53,31
6. Tanakpur	37,16	37,16
7. Gauriganga Stage-I	1,82,00	—
	11,03,31	8,03,31
LESS : EXPENDITURE		
1. Chamera	2,58,72	2,58,72
2. Dhaleshwari	1,57,31	1,49,58
3. Dhauliganga-Stage-I	3,65,89	3,27,35
4. Tanakpur	37,16	37,16
5. Gauriganga-Stage-I	2,02,88	81,73
6. Barah Pump Storage Scheme, Alwar	29,35	53,85
7. Dhauliganga-Stage-II	59,65	9,53
8. Kishanganga	6,37	—
9. Bhagliar	51,09	—
	11,68,42	9,17,92
Less excess of expenditure on investigation over receipts, shown in current assets under 'Loan and Advances'	1,61,92	2,19,15
	10,06,50	6,98,77
Unspent amount of Grants-in-Aid	96,81	1,04,54

SECURED LOANS

SCHEDULE-4

14% 7 year Redeemable Non-Convertible

Bonds of Rs. 1000 each: (to be secured through equitable mortgage against fixed assets of Loktak and Baira Siul Hydroelectric Projects).

(14,36,429 Bonds of Rs. 1000 each)

The Bonds are redeemable at par on each of the following earliest redemption dates:

Date of Redemption	Number of Bonds	Value (in thousands)
(i) 08.07.93	2,70,000	27,00,00
(ii) 18.09.93	4,000	40,00
(iii) 09.10.93	35,500	3,55,00
(iv) 20.10.93	1,00,000	10,00,00
(v) 30.10.93	500	5,00
(vi) 07.11.93	8,90,929	89,09,29
(vii) 20.11.93	2,000	20,00
(viii) 24.01.94	1,000	10,00
(ix) 19.02.94	6,000	60,00
(x) 20.02.94	12,000	1,20,00
(xi) 23.02.94	8,500	85,00
(xii) 04.03.94	6,000	60,00
(xiii) 26.03.94	20,000	2,00,00
(xiv) 31.03.94	80,000	8,00,00
	<u>14,36,429</u>	<u>1,43,64,29</u>

Note: The amount of Bonds subscribed by the Directors is Rs. 5,000.

UNSECURED LOANS

SCHEDULE-5 (Rs. in thousands)

Particulars	31.3.1987	31.3.1986
1. Loans from Government of India	1,84,56,66	1,81,77,56
2. Loans from other sources	78,19,52	35,95,93
	<u>2,62,76,18</u>	<u>2,17,73,49</u>

FIXED ASSETS
SCHEDULE-6
(Rs. in thousands)

Particulars	Gross Block as at 1.4.1986	Additions/ Adjust- ments	Dedu- ctions/ Sales/ Transfers	Gross Block as at 31.3.1987	Total Depre- ciation as at 31.3.1987	Net Block as at 31.3.1987	Net Block as at 31.3.86
1	2	3	4	5	6	7	8
1. Land (Freehold)	2,80,08	2,29,41	11	5,09,38	—	5,09,38	2,80,08
2. Land (leasehold)	2,14,93	25,76	9,50	2,31,19	4,72	2,26,47	2,12,03
3. Buildings	28,49,48	13,90,36	2,45	42,37,39	9,22,35	33,15,04	22,42,16
4. Roads & Bridges	9,73,13	1,24,64	—	10,97,77	1,73,60	9,24,17	8,16,51
5. Railway siding	—	—	—	—	—	—	—
6. Plant & Machinery (Constn.)	49,66,49	45,40,72	1,10,94	93,96,27	24,78,48	69,17,79	35,54,39
7. Plant & Machinery (Generating)	38,35,92	7,06	—	38,42,98	3,64,47	34,78,51	35,72,85
8. Substation equipments	2,80,85	33,13,67	40	35,94,12	36,73	35,57,39	2,63,77
9. Hydraulic works including Dams, Tunnels, Channels & Penstocks	1,80,11,13	5,64	—	1,80,16,77	6,55,20	1,73,61,57	1,75,50,26
10. Vehicles & other Transport	6,45,74	1,36,27	31,88	7,50,13	2,67,85	4,82,28	4,37,94
11. Office furniture & fixtures, office equipment & other Appliances	3,40,24	1,54,16	6,50	4,87,90	74,04	4,13,86	2,90,09
12. Transmission Lines	7,47,29	51,73,61	16,94	59,03,96	1,01,60	58,02,36	6,56,47
13. Misc. equipment/ Other Assets	5,70,75	3,13,90	2,16,43	6,68,22	94,73	5,73,49	4,83,66
	3,37,16,03	1,54,15,20	3,95,15	4,87,36,08	51,73,77	4,35,62,31	3,03,60,21
PREVIOUS YEAR	2,96,39,06	43,41,12	2,64,15	3,37,16,03	33,55,82	3,03,60,21	

CAPITAL-WORK-IN-PROGRESS

SCHEDULE-7 (Rs. in thousands)

Particulars	31.3.1987	31.3.1986
1. Survey, Investigation, Consultancy and other preliminary expenses	2,40,35	3,06,39
2. Building & Civil Engineering Works and communications	25,16,42	22,29,51
3. Roads and Bridges	39,49,47	19,43,04
4. Hydraulic works including Barrages, Dams, Tunnels, & Power channels	38,08,14	17,38,28
5. Penstock	8,60,96	—
6. Plant & Machinery in Generating Station	37,49,60	21,40
7. Electrical installations & substation equipments	17,21,90	36,83,61
8. Miscellaneous Assets	4,59,28	3,39,79
9. Trunk Transmission lines	26,13,37	34,66,58
10. Railway sidings	—	12,74
11. Incidental expenditure during construction		
Balance brought forward from last year	92,85,59	35,37,96
Add: Additions for the year	72,13,53	57,58,71
(As per annexure)	1,64,99,12	92,96,67
Less: Capitalised during the year	16,35,10	11,08
	<u>1,48,64,02</u>	<u>92,85,59</u>
	<u>3,47,83,51</u>	<u>2,30,26,93</u>

**STATEMENT OF INCIDENTAL EXPENDITURE DURING
CONSTRUCTION FOR THE PERIOD ENDING 31.3.1987**

ANNEXURE TO SCHEDULE-7
(Rs. in thousands)

Particulars	31.3.1987	31.3.1986
1. EMPLOYEES' REMUNERATION AND BENEFITS		
Salaries, wages, allowances & benefits	7,05,14	6,08,91
Expenses on surplus staff	2,95,84	3,36,32
Foreign service contribution	5,72	2,84
Contribution to Provident Fund	74,90	49,55
Contribution to Gratuity Fund	19,63	10,66
Staff Welfare	1,13,16	59,56
	<u>12,14,39</u>	<u>10,67,84</u>
2. REPAIRS & MAINTENANCE		
Buildings	35,82	26,81
Machinery & construction equipment	2,87,83	54,11
Others	1,45,24	78,99
	<u>4,68,89</u>	<u>1,59,91</u>
3. Travelling and conveyance	85,48	80,99
4. Expenses on staff cars & inspection vehicles	1,54,65	1,33,83
5. Land acquisition & rehabilitation expenses	15,00	44,41
6. Rent	1,13,53	1,07,11
7. Rent for Residential accommodation	33,78	36,45
8. Rates and taxes	2,53	2,06
9. Insurance	1,19,40	3,57,51
10. Electricity charges	37,66	14,83
11. Telephone, Telex & postage	52,30	41,29
12. Advertisement & publicity	38,40	29,23
13. Design and consultation	2,18,12	1,35,54
14. Entertainment	1,41	1,54
15. Printing & stationery	38,03	60,28
16. Payment to Auditors		
(a) Audit fee (prior period 62)	1,92	1,50
(b) for taxation matters	45	45
(c) Audit expenses (prior period)	1,52	1,96
	<u>3,89</u>	<u>3,91</u>
17. Interest on loans	8,76,75	6,35,63
18. Interest on Bonds	10,82,77	—
19. Bonds Issue Expenses (Note 3)	2,73,91	—
20. Bank charges and interest	3,22	53
21. Transfer of technology	57,62	1,32,15
22. Loss on materials/Assets written off	—	1,86
23. Foreign consultancy charges	23,48,59	24,21,78
24. Depreciation	13,84,78	6,55,51
25. Other expenses	2,49,62	1,14,62
	<u>88,74,72</u>	<u>62,38,81</u>

Contd.

(Rs. in thousands)

Particulars	31.3.1987	31.3.1986
LESS: RECEIPTS AND RECOVERIES		
1. Sale of Scrap material	4,17	3,81
2. Electricity charges	43,48	1,52
3. Rent	2,15	1,22
4. Interest:		
Term Deposits & Savings Bank	77,57	65,90
Loans and Advances	43,66	20,12
Other Investments	2,19,64	—
5. Miscellaneous Receipts & Recoveries	34,79	26,99
6. Profit on Sale of Assets	2,97	—
7. Receipt on Transmission of Power during construction	60,18	—
	<u>4,88,61</u>	<u>1,19,56</u>
Net expenditure	83,86,11	61,19,25
LESS:		
1. Design charges allocated to Capital work-in-progress	91,95	92,29
2. Hire Charges/Out turn allocated/allocable directly to work in progress	8,93,24	18,95
3. I.E.D.C. allocated to Investigation, Deposit, Agency Works and operating projects	<u>1,87,39</u>	<u>2,60,66</u>
	<u>72,13,53</u>	<u>57,47,35</u>
Add/(less) prior period adjustment (Net)	—	11,36
Amount transferred to capital work-in-progress	72,13,53	57,58,71
NOTE:		
	<u>1986-87</u>	<u>1985-86</u>
	<u>Rs.</u>	<u>Rs.</u>
1. a) The above expenditure includes the following amounts paid to Directors:		
i) Salaries and allowances	2,14,281	2,29,523
ii) Leave encashment	43,984	600
iii) Contribution to Provident Fund	18,784	18,824
iv) Rent for residential accommodation	72,085	46,962
v) Medical Reimbursement	7,811	14,630
vi) Travelling Expenses	1,39,603	74,544
vii) Leave Travel concession	2,912	4,901
b) Whole-time Directors were also allowed the use of company's car for official journeys and for private journeys upto 1000 kms. on payment of Rs. 150/- p.m. in terms of Government Sanction. Perquisite value of staff car, if available for unrestricted use would have worked out to Rs. 13,060/- for 1986-87 (previous year Rs. 11,310/-).		
2. The above does not include Rs. 171.11 lakhs (Previous year Rs. 72.64 lakhs) on account of shortages/losses of material, which are under investigation. Pending finalisation of the investigation, the amount has been shown under respective heads of accounts.		
3. Break-up of Bond issue expenses is as below:-		
i) Brokerage and Commitment Fees.	2,14,40,190	
ii) Printing & Stationery	7,75,048	
iii) Advertisement & Publicity.	31,44,304	
iv) Audit Fees & Expenses.	1,18,993	
v) Other expenses.	19,12,747	

CURRENT ASSETS, LOANS AND ADVANCES

SCHEDULE-8 (Rs. in thousands)

Particulars	31.3.1987	31.3.1986
1. INVENTORIES		
- Stores & Spare Parts including inventory in transit (at estimated cost)	56,96,36	45,31,54
2. CASH & BANK BALANCES		
i) Cash, Imprest, Postal Orders & Postal stamps	16,06	17,91
ii) Balances with Scheduled Banks		
Savings Bank Account	55,26,57	28,37,61
Short-Terms Deposits	9,54,91	—
iii) Balances with Non-Scheduled Bank		
Maximum balance during the year		
Current Accounts	1986-87	1985-86
Nepal Rashtra Bank, Kathmandu	51	1,86
Nepal Bank Ltd.	24,63	7,18
		9
		2,98
		52
		2,30
3. SUNDRY DEBTORS		
i) Debts outstanding for a period exceeding six months (considered good)	26,57,43	27,17,87
ii) Other debts less than six months (considered good)	27,27,07	53,84,50
		21,25,38
		48,43,25
4. OTHER CURRENT ASSETS		
Interest accrued on Deposits	1,25,59	13,39
5. LOANS & ADVANCES		
Advances recoverable in cash or kind or for value to be received:		
Secured (considered good)	16,43,62	1,51,28
Unsecured (considered good)	1,23,19,92	1,38,32,23
Loans		
To Employees (Secured)	1,78,81	1,15,61
Balance with Customs and Port Trust Authority	8,48,99	2,41,81
	3,26,98,40	2,65,87,45

NOTE:

- Advances due from Directors Rs. 64,616/- (Maximum amount due at any time during the year amounts to Rs. 90,880/- Previous year Rs. 99,968/-) (Previous year Rs. 90,880/-).
- Advances due by Companies in which any Director of the Corporation is a Director or member, amounts to Rs. 90.43 lakhs (previous year Rs. 85.58 lakhs).

CURRENT LIABILITIES AND PROVISIONS

SCHEDULE-9 (Rs. in thousands)

Particulars	31.3.1987	31.3.1986
LIABILITIES		
1. Sundry Creditors	10,36,44	6,89,05
2. Unspent amount of Deposit/Agency works	1,21,50	1,47,87
3. Deposits, Retention Money from contractors and others	6,62,23	5,43,13
4. Other liabilities	17,54,51	14,56,60
5. Interest accrued but not due on loans	7,72,94	6,81,31
6. Liability for cheques issued	21,31,83	24,12,37
	<u>64,79,45</u>	<u>59,30,33</u>

DETAILS OF DEPOSIT WORKS AND PROJECTS ON AGENCY BASIS

ANNEXURE TO SCHEDULE-9 (Rs. in thousands)

Particulars	Amount of Deposit upto 31.3.1987	Expenditure upto 31.3.1986	Expenditure during 1.4.1986 to 31.3.1987	Share of Corporate Office Expenditure	Total Expenditure upto 31.3.1987	Unspent Amount
A. DEPOSIT WORKS						
TRANSMISSION CONSTRUCTION UNITS						
1. Gangtok to Melli-Kalimpong	4,24,13	4,19,63	—	—	4,19,63	4,50
2. Gangtok to Dikchu						
3. Liematak-Jiribam	4,72,18	4,53,67	—	—	4,53,67	18,51
4. Ramnagar-Gandak	1,77,30	1,58,08	—	—	1,58,08	19,22
5. Neepco	9,79	10,07	—	—	10,07	(-) 28*
B. PROJECTS ON AGENCY BASIS						
1. Salal Project	4,48,93,90	3,87,55,37	59,83,75	1,26,75	4,48,65,87	28,03
2. Devighat Project	40,69,42	40,09,75	10,30	20	40,20,25	49,17
3. Nuwakot R.E. Project	2,68,80	95,00	1,69,39	3,50	2,67,89	91
4. Trishuli Power Resources Inv. Works	5,00	3,68	16	1	3,85	1,15

NOTE:— Expenditure on Transmission Construction Units and Projects on agency basis represents cash expenditure only and does not include accrued expenditure. Expenditure, however, includes Advances to Staff, Suppliers, Contractors, Deposits and unconsumed stocks.

*Shown in Current Assets, under the head 'Amount Recoverable'.

MISCELLANEOUS EXPENDITURE**SCHEDULE-10**
(Rs. in thousands)

Particulars	31.3.1987	31.3.1986
MISCELLANEOUS EXPENDITURE TO THE EXTENT NOT WRITTEN OFF OR ADJUSTED		
1. Preliminary expenses	20,01	24,01
2. Deferred Revenue Expenditure	—	4
	<u>20,01</u>	<u>24,05</u>

MISCELLANEOUS INCOME**SCHEDULE-11**
(Rs. in thousands)

Particulars	31.3.1987	31.3.1986
1. Other Miscellaneous receipts and recoveries	12,65	9,58
2. Profit on Sale of fixed Assets	47	2,83
	<u>13,12</u>	<u>12,41</u>

GENERATION, TRANSMISSION AND ADMINISTRATION EXPENSES**SCHEDULE-12**
(Rs. in thousands)

Particulars	31.3.1987	31.3.1986
GENERATION & TRANSMISSION EXPENSES		
1. Consumption of Stores and Spares	45,15	33,34
2. Repairs and Maintenance		
a) Buildings	14,80	27,58
b) Machinery	71,47	75,51
c) Others	1,07,50	70,76
3. Wheeling charges	59,54	51,48
4. Other Operational expenses	1,22	3
ADMINISTRATION EXPENSES		
5. Rent	2	—
6. Rates & Taxes	1,63	96
7. Insurance	16,76	6,46
8. Electricity charges	21,68	6,89
9. Travelling & conveyance	17,20	12,76
10. Telephone, telex & postage	2,82	2,43
11. Consultancy charges	5,70	5,69
12. Advertisement & publicity	1,53	1,19
13. Entertainment expenses	7	25
14. Printing & Stationery	4,28	3,10
15. Corporate Office Management expenses	51,03	46,04
16. Other Miscellaneous expenses	65,65	31,19
17. Loss on Sale of Assets	16	—
	<u>4,88,21</u>	<u>3,75,66</u>

EMPLOYEES' REMUNERATION AND BENEFITS

SCHEDULE-13 (Rs. in thousands)

Particulars	31.3.1987	31.3.1986
1. Salaries, Wages and allowances	3,05,32	2,41,37
2. Company's contribution to Provident & Gratuity Funds	23,02	15,94
3. Staff welfare expenses	38,55	43,12
	<u>3,66,89</u>	<u>3,00,43</u>

EXPLANATORY NOTES

SCHEDULE-14

- Contingent liabilities exist in respect of the following:
 - Claims against the company not acknowledged as debts amounting to Rs. 300.36 lakhs (previous year Rs. 542.50 lakhs).
 - Income tax demands/liabilities Rs. 132.83 lakhs (Previous year Rs. 24.96 lakhs) excluding liability, if any, on consultancy fees paid to foreign consultants against which ad-hoc payments have been made pending determination of the liability by the income tax department.
 - Estimated amount of Contracts remaining to be executed on Capital accounts and not provided for, is Rs. 22,888.32 lakhs (previous year Rs. 21334.76 lakhs). The contingent liability, if any, in respect of the Projects executed on Agency basis, Deposit Works and Works executed against Grant-in-aid have not been included as the Corporation does not anticipate any liability.
- The Government of Himachal Pradesh has raised claim against the Corporation for share of profit earned from Baira-Siul Project. As per the revised formula approved by the Central Government, the Royalty at the rate of 1.5 paise per unit is only payable to the State Government and accordingly the provision for Royalty amounting to Rs. 120.77 lakhs during the year has been made.
- The cost of land represents provisional/initial payments towards compensation and other incidental expenses. The title of land in certain cases has not been passed on to the Corporation pending completion of legal formalities.
- Rs. 1321.13 lakhs included under "Communication" in construction work-in-progress relates to expenditure incurred on Roads, Bridges, and culverts on land not belonging to the Corporation and will be allocated in terms of Accounting Policy No. 10.
- The priced stores Ledgers are complete except in Chamera, Dulhasti & Tanakpur. However, pending detailed reconciliation, the balance of inventories Rs. 5696.36 lakhs has been taken as per books of accounts.
- The agreements for the supply of Power with beneficiaries except Punjab State Electricity Board and Haryana State Electricity Board are under finalisation. Pending finalisation of the agreements, sale of electricity from Loktak and Chukha has been accounted for on a provisional basic rate of 50 paise and 45 paise per KWH respectively. Similarly sale of Baira Siul Power to DESU and HPSEB has been accounted on a basic rate of 34.04 paise and 35.18 paise per KWH respectively.
 - Similarly, pending finalisation of the agreement with Chukha Hydel Project (Bhutan), the purchase of power has been accounted for @ 27 paise per KWH.
- Pending receipt of verified bills and other related documents, no provision has been made in respect of some capital works done and capital stores received and consumed within the year against which advance payments have not been adjusted.
- In Baira Siul Project, Current Assets and Liabilities include advance to suppliers Rs. 38.49 lakhs (previous year Rs. 108.20 lakhs) and creditors Rs. 76.54 lakhs (previous year Rs. 160.69 lakhs). The figures are after adjusting adverse balances. They are under reconciliation.
 - In Tanakpur Project, current Assets include the balances on Account of stores issued to contractors Rs. 78.78 lakhs and advance payment to suppliers Rs. 3236.52 lakhs after reducing minus balances of Rs. 18.40 lakhs and Rs. 3.96 lakhs respectively.
- Previous year's figures have been suitably re-arranged, wherever practicable, to correspond to the current year's figures.

**ADDITIONAL INFORMATION REQUIRED UNDER PART-II
OF SCHEDULE VI OF THE COMPANIES ACT, 1956**

SCHEDULE-15
(Rs. in thousands)

Particulars	1986-87	1985-86		
1. EXPENDITURE ON EMPLOYEES				
Expenditure on employees who are in receipt of remuneration not less than Rs. 36,000/- per annum if employed throughout the year or Rs. 3000/- per month if employed for part of the year.				
a) Employed throughout the year				
i) Number of employees	466	410		
ii) Salary and Wages (Rs. in thousands)	2,12,56	1,94,63		
iii) Value of perquisites (Rs. in thousands)	4,27	2,44		
b) Employed for part of the year				
i) Number of employees	21	20		
ii) Salary and Wages (Rs. in the thousands)	5,33	5,99		
iii) Value of perquisites (Rs. in thousands)	9	3		
(This does not include employees at Salal, Devighat & NREP which are being executed on agency basis and the remuneration of such employees is debited to deposits from the Government of India and are not debited to the Corporation's Incidental Expenditure during Construction). However, information for Salal, Devighat and NREP Project is as under.				
	1986-87	1985-86		
	Salal	Nuwakot R.E.P.	Salal	Devighat N.R.E.P.
a) Employed throughout the year				
i) Number of employees	44	8	55	2
ii) Salary and Wages (Rs. in thousands)	19,97	5,43	23,49	94
iii) Value of perquisites (Rs. in thousands)	—	—	1,16	—
b) Employed for part of the year				
i) Number of employees	11	4	2	—
ii) Salary and Wages (Rs. in thousands)	3,42	58	51	—
iii) Value of perquisites (Rs. in thousands)	—	—	3	—
NOTES:— (1) The Gratuity amount has not been taken into account as the same has been provided on the basis of Gratuity-cum-L.I.C. Policy taken with the Life Insurance Corporation.				
NOTES:— (2) Emoluments of Devighat and Nuwakot R.E.P. employees include foreign allowances.				
2. EXPENDITURE INCURRED IN FOREIGN CURRENCY	1986-87	1985-86		
i) Know-how	—	—		
ii) Other Miscellaneous Matters	43,07,70	3,50,33		
3. VALUE OF SPARE PARTS & COMPONENTS CONSUMED (O & M PROJECTS)				
i) Imported	—	—		
ii) Indigenous	45,15 (100 %)	33,34 (100 %)		
4. VALUE OF IMPORTED PLANT & MACHINERY AND SPARES	36,61,41	30,51		

5. LICENSED/INSTALLED CAPACITY & ACTUAL PRODUCTIONS

	Baira Suil		Loktak	Chukha Tr. Unit
	1986-87	1985-86	1985-86	1986-87 (5 months)
1. Licensed capacity	180 MW	180 MW	105 MW	105 MW
2. Installed capacity	180 MW	180 MW	105 MW	105 MW
3. Actual Production (in million units)	808.26	677.55	398.57	413.60
4. Value (Rs. in thousands)	267768	278039	206485	196237
	(767.00 MU)	(653.39 MU)	(395.57)	(402.95 MU)
5. Purchase of power* (in million units)				281.14
6. Transmission and sale of power* (in million units)				281.14

*Excluding purchase and sale during trial run.

ACCOUNTING POLICIES

- Liability accruing from year to year on account of service gratuity is discharged by paying requisite premium on LIC policy and accounted for in the year of payment.
- Liability for payment for imported equipment/service is worked out with reference to the rate of exchange ruling on the date of payment.
- The Corporation has received grants-in-aid for investigation of various projects. The balance of grants-in-aid is being reflected in accounts under Liabilities and Provisions after deducting expenditure incurred on the investigation works. The ownership of the assets for the expenditure incurred from grants-in-aid does not vest with the Corporation and hence is not included in the assets of the Corporation.
- Liability, if any, for capital works executed but not measured has not been provided as the works have not been finally inspected and accepted by the Corporation. Similarly, liability for material in transit has not been provided till the time of receipt, inspection and acceptance of the material by the Corporation.
- The completed assets have been capitalised on the basis of cost incurred on construction of such assets. However, where the actual expenditure could not be determined, the same has been determined on the basis of estimated cost.
- The amounts contributed by other agencies including State Governments towards part of cost of certain Assets belonging to Corporation have been reduced from the cost of such Assets and the net cost has been shown in the Accounts. In case of assets jointly owned with other agencies the contribution by other agencies will be reduced from the cost of such assets and net cost shown in accounts in the year of completion.
- In the Projects under construction, the grant/share of cost/expenditure incurred on the assets on land not belonging to the Corporation has been accounted for under construction work-in-progress pending final allocation.
- Depreciation on Assets, Plant & Machinery, equipment etc. used for generation/transmission, operation and maintenance of generating stations is being charged with reference to the rates ascertained under notification issued under sub-section 1 of Section 68 of Electricity (supply) Act, 1948 from the year following the year in which the Assets are put up to use. Depreciation on construction plant and machinery, equipment, transport vehicles, office equipment, buildings is provided upto 95% of the cost on Straight Line method by dividing the original cost of the Assets by the specified period calculated in accordance with the Income Tax Act, 1961 and rounded to the next two decimals on higher side.
- (a) Inter Project/Unit transfers of Plant & Machinery and stores are being transferred at Book Value.

- (b) Surplus/obsolete stores and equipment lying at the Projects are being identified on periodical intervals. The surplus items so identified are being transferred to other projects/Units of the Corporation where the same are required. Surplus equipment/stores are also given to other Project/Undertakings/Departments of the Central/State Governments depending upon their requirements for such items. Depreciation is not provided on assets declared surplus to the requirement of Project/Unit. The losses, if any, on disposal is being accounted after the disposal of such items.
10. The total amount of incidental expenditure during construction and intangible expenditure incurred on the project which has been put to commercial operation during the year have been allocated on the tangible fixed immovable assets' excluding land on the basis of cost appearing/adjusted as on 1st day of the start of commercial production.
 11. Value of stock of capital stores and revenue stores lying at various work/sites are directly charged to construction work-in-progress and generation, transmission and administrative expenses respectively.
 12. The petty items and tools, the individual value of which is less than Rs. 100/- are being charged to consumption account. The value of loose tools costing Rs. 100/- and more in each case has been capitalised and shown under loose tools. The value of loose tools so capitalised has been written off in 5 equal annual instalments by debit to consumption of loose tools.
 13. The Corporate Office expenses excluding advances and assets but including remuneration to surplus employees is allocated as under:—
 - (a) On the existing Transmission Lines being executed by the Corporation as deposit works at a flat rate of 2% of the direct capital expenditure incurred. The profit or loss if any, on deposit work taken on fixed Administration/Management fees would be adjusted/accounted for on completion of such work and finalisation of its account.
 - (b) Estimated Design expenses incurred in the Corporate Office in respect of Projects/Units on the basis of quantum of services rendered to the respective Projects/Units.
 - (c) On operational projects and Transmission systems @ 1% of sales of energy and wheeling charges excluding taxes, duties and wheeling and Power Charges payable to third parties.
 - (d) The balance expenditure is allocated to Projects under construction, investigation, agency basis and capital expenditure on operation Projects on pro-rata basis in the ratio of their net capital expenditure incurred during the year.
 14. The interest, if any, to be received on overdue payments for the sale of energy, and advances given to the staff, suppliers etc. is being accounted for as and when actually received and not on the basis of accrual.
 15. Expenses or income related to earlier years incurred or realised during the current year have been shown under the heading "Prior Period Adjustments" only if the amount involved is more than Rs. 5000/- in each case.
 16. The liability, if any, on account of reimbursement of deficit of Employees Provident Fund Trusts are accounted for as and when the amounts are paid to the Trusts.
 17. In operational projects, where the construction activity is still continuing, the common service expenses have been primarily allocated on the basis of estimated services rendered to/benefit derived by each activity i.e. construction/operation.
 18. The Bonds have been raised for part financing of some of the projects under construction. The Debenture Redemption Reserve, if required, shall be created after moratorium period i.e. start of commercial operations of the concerned project.
 19. Expenditure on raising finances for construction projects by issuing Debentures/Bonds and interest charges thereon during the construction period is treated as Capital Expenditure and charged to 'Incidental Expenditure During Construction'.

AUDITORS' REPORT

To the Members of National Hydroelectric Power Corporation Limited

We have audited the attached Balance Sheet of National Hydroelectric Power Corporation Limited as at 31st March, 1987 and the Profit & Loss Account for the year ended on that date annexed thereto in which are incorporated the accounts of the Projects/Units audited by the Branch Auditors and report that:

1. As required by the Manufacturing and other Companies (Auditor's Report) Order, 1975 issued by the Company Law Board in terms of Section 227(4A) of the Companies Act, 1956, we enclose in the Annexure a statement on the matter specified in paragraphs 4 and 5 of the said order.
2. Further to our comments in the Annexure referred to in paragraph 1 above:
 - (a) We have obtained all the information and explanation which to the best of our knowledge and belief were necessary for the purpose of our audit.
 - (b) In our opinion proper books of accounts as required by law have been kept by the Company so far as appears from our examination of such books and proper returns adequate for the purpose of our audit which have been received from the Projects/Units not visited by us.
 - (c) The reports of the branch auditors, in respect of Project/Units not audited by us, have been received and the same have been considered and relied upon while preparing our report.
 - (d) The Balance Sheet and Profit and Loss Account referred to in this report are in agreement with the books of accounts and returns.
 - (e) In our opinion and to the best of our information and according to the explanations given to us, the said Balance Sheet and the Profit & Loss Account read together with the Accounting Policies and Explanatory Notes forming part thereof, and subject to:—
 - i) Loss arising out of collapse of a portion of tunnel in the year 1983 at Loktak Project and the estimated cost of which is Rs. 71.54 lakhs has not been charged off to the Profit & Loss Account of the Project and is included under the head 'work-in-progress'. Besides, depreciation amounting to Rs. 2.58 lakhs has been charged upto 31.3.1987 on the same. This has resulted in an over statement of profit of the Project to the extent of a net estimated amount of Rs. 68.96 lakhs.
 - ii) No provision has been made for losses arising out of fire/theft/shortages/breakages/damages valued at Rs. 171.11 lakhs and mentioned in note No. 2 below the statement of incidental expenditure during construction and no adjustment having been made for Rs. 10.83 lakhs worth of material short received/damaged at Jeypore Talchar Transmission Project which is included in the capital work in progress and is replaceable by the contractor.
 - iii) Accounting Policy No. 2 regarding provision of liability for imported equipment/services, accounting policy No. 9 regarding provision for losses arising out of surplus/obsolete stores and accounting policy No. 13 regarding allocation of remuneration to surplus labour at operational Projects amounting to Rs. 295.84 lakhs to the cost of various non-operational Projects resulting in the over-statement of the profit for the year by that amount.
 - iv) Loans and advances given to Government Departments, contractors, suppliers, staff and other departments are subject to confirmation/reconciliation pending receipt of accounts/verified bills. The effect on various account heads and of amount has not been quantified.

- v) No provision has been made for accrued liability of Bonus, if any due, under the payment of Bonus Act, 1965 as amended till date.
- vi) Bank reconciliation at the Corporate Office has revealed that adjustments/rectification of excess/short Debits/Credits by the Bank/Corporate Office including such Debits/Credits pertaining to the period prior to 31st March, 1986 are pending reconciliation.
- vii) No provision of loss, if any, arising out of damage to equipment in transit including value of reconstruction of foundation washed away in flood in respect of Chukha Unit has been made. The amount of such loss has not been quantified.
- viii) In respect of Koel Karo Project payment made for establishment cost of Directorate, Land Acquisition and Rehabilitation, Government of Bihar towards land acquisition amounting to Rs. 59.41 lakhs till date has been taken into incidental expenditure during construction.
- ix) Debit Balance in Suspense Account Rs. 11.56 lakhs has not been adjusted in the accounts of Dhauliganga and Gauriganga Projects.
- x) The Depreciation rates provided under Electricity (Supply) Act, 1948 have prevailed wherever they have been inconsistent with the provisions of the Companies Act, 1956, in respect of assets used for generating transmission operation and maintenance at Generating Stations.
- xi) No amount has been provided for liability, if any, that may arise on account of agreements entered with the OSEB for which only provisional amount has been paid/adjusted and the Corporation has not taken possession of all the records/documents, Title Deeds etc.
- xii) Shortage of 228.43 MT of imported billets valued at about Rs. 11.85 lakhs has not been adjusted in the accounts.
- xiii) Refund of custom duty of Rs. 1.81 crores has not been taken in accounts on account of reduction in rate of custom duty in respect of import of equipment for Chamera Project pending reconciliation. Further Rs. 4.94 lakhs being short payment of custom duty on the import of explosives has not been accounted for.
- xiv) No claim on account of refund of freight of Rs. 9.95 lakhs for 1786.418 MT of steel angles has been lodged with SAIL/Railway authorities and also remains unadjusted in the books of accounts.
- xv) No provision on account of liability of Income Tax, if any due, has been made in the accounts as in the opinion of the Management there is no taxable income. Besides provision in respect of final liability of Income Tax paid on payments made to foreign consultants has also not been made.
- xvi) The earlier years difference of Rs.52.06 lakhs in the value of stores in the case of Baira Siul Project as per priced stores ledger and General Ledger has been adjusted by crediting to previous year income.
- xvii) Liability accruing on account of service gratuity for the year has been provided on estimated basis. The short provision, if any, which may result after actual calculation has not been quantified.
- xviii) The stores in transit and Advances to Suppliers in respect of Dulhasti Project includes assets worth Rs. 67.36 lakhs (approximate) on which no depreciation has been charged for the year (amount un-ascertained). Besides depreciation includes Rs. 1,77,242.00 in respect of residential building pertains to previous year.

xix) No provision of short and excess delivery of structure for Chukha Project by the transporter has been made in the books of accounts.

xx) No agency fee of 5% on actual cost identifiable to the N.R.E.P. Project has been accounted for in the books of accounts.

xxi) No liability, if any, in respect of Projects executed on agency basis, deposit works and works executed against grants-in-aid has been provided/included in the accounts.

xxii) The Corporation has secured by a first charge through equitable Mortgage of certain immovable fixed assets for the nominal value of Bonds, interest accrued thereon, remuneration of trustees and other costs in respect of which certain formalities like registration etc. are under process of completion.

NOTES:

- No.1(b) Demand of Rs. 132.83 lakhs of various assessment years alongwith other demands vacated for different assessment years are under dispute for which the Corporation has filed revision petition Under Section 264 of the Income Tax Act, 1961 before CIT for the settlement of the same.
- No. 2 Regarding provision of royalty payable to Himachal Pradesh Government against their claim of sharing of profit.
- No. 3 Regarding accounting for the cost of land on the basis of provisional/initial programme and non-compilation of legal formalities for transfer of title of land to the Corporation. The period of lease in the case of Dulhasti H.E. Project and Udampur Project has been taken as 99 years except for Tanakpur HE Project where land has been capitalised.
- No. 5 Regarding non-compilation and non-reconciliation of prices stores ledgers maintained at different Projects and the adoption of general ledger balances as the value of Inventory.
- No. 6(a) Regarding the adoption of provisional rates for the sale of power to different state Governments, State Electricity Boards and other agencies.

give the information required by the Companies Act, 1956 in the manner so required and give a true and fair view:

- in so far as it relates to the Balance Sheet, of the state of affairs of the Corporation as at 31st March, 1987 and
- in so far as it relates to the Profit and Loss Account, of the Profit of the Corporation for the year ended on that date.

for V. Malik & Associates
Chartered Accountants

Place: New Delhi
Dated: 2 September, 1987

(Vipin Malik)
Partner

ANNEXURE TO THE AUDITORS' REPORT

Referred to in our Report of even date.

- A.
- i) The Company has maintained records for a major portion of fixed assets. The records maintained do not show situational/utilisation details in some cases. The Management has not conducted physical verification of fixed assets at most of the Projects and as such we are unable to comment about the discrepancies, if any;
 - ii) Fixed Assets have not been revalued during the year;
 - iii) Physical verification of stores and spare parts have not been conducted by the Management at most of the Projects, as such, we are unable to comment about the discrepancies, if any. The value of inventory is as per General Ledger since priced stores ledgers have not been reconciled with financial records and are incomplete;
 - iv) The Corporation has not taken any loans secured or unsecured from Companies, firms or other parties listed in the register maintained under Section 301 and 370 (1-C) of the Companies Act, 1956;
 - v) The Corporation has given advances in the nature of loans to the employees of the Corporation and contractors who are generally repaying the principal amounts as stipulated and are also generally regular in making payment of interest;
 - vi) In our opinion, and according to the information and explanation given to us, there are adequate internal controls, procedures commensurate with the size of the Company and the nature of its business with regard to purchase of stores, raw materials including components, plant and machinery, equipment and other assets, but the procedures laid down need to be strictly followed;
 - vii) According to the information and explanation given to us, no purchases have been made during the year, of stores and spare parts or components exceeding Rs. 10,000/- in value for each type, from firms or companies or other parties in which the Directors are interested;
 - viii) As explained to us, unserviceable or damaged stores and raw materials are determined and provisions, if any, are made at the time of disposal of such stores as laid down in Accounting Policy No. 9(b);
 - ix) The Company has not accepted any deposits from the public;
 - x) According to information and explanation given to us, the Company is maintaining reasonable records for the sale and disposal of the realisable scrap;
 - xi) The Company has an internal audit system in operation but the same is not commensurate with the size of the Company and the nature of its business;
 - xii) Maintenance of cost records has not been prescribed by the Central Government Under Section 209 (1)(d) of the Companies Act, 1956;
 - xiii) Provident Fund dues have been deposited on adhoc basis with N.H.P.C. Employees Provident Fund Trust and is subject to adjustment/reconciliation and audit of Provident Fund Trust Account.
- B. In respect of agency works/deposit work;
- i) The Company has a reasonable system of recording receipts, issues and consumption of stores and materials which also provides for a reasonable allocation of the material and man-hours consumed to relevant projects;
 - ii) There exists a reasonable system of authorisation at proper levels with necessary control on the issue of stores and allocation of stores and labour to jobs. The internal control system needs strengthening considering the size of the Company and nature of its business.

for V. Malik & Associates
Chartered Accountants

(Vipin Malik)
Partner

Place: New Delhi
Dated: 2 September, 1987

Comments of the Comptroller and Auditor-General of India Under Section 619 (4) of the Companies Act, 1956.

I have to state that the Comptroller and Auditor General of India has no comments upon or supplement to the Auditors' Report, under Section 619 (4) of the Companies Act, 1956 on the accounts of National Hydroelectric Power Corporation Ltd., New Delhi, for the year ended 31st March, 1987.

New Delhi.

Dated: 25th September, 1987

(S.C. ANAND)
Member, Audit Board & Ex-Officio
Director of Commercial Audit-III
New Delhi.

Review of accounts of National Hydroelectric-Power Corporation Limited for the year ended 31st March, 1987 by the Comptroller and Auditor-General of India.

1. FINANCIAL POSITION

The Table below summarises the financial position of the Company Under broad headings for the last three years.

(Rs. in lakhs)

	1984-85	1985-86	1986-87
Liabilities			
a) Paid-up Capital (including shares (application money pending allotment)	31,287.66	48,048.12	57,727.60
b) Reserves & Surplus	2,344.74	4,142.16	6,067.08
c) Borrowings			
i) From Govt. of India	16,083.16	18,177.56	18,456.66
ii) From other sources (Foreign Loans)	1,404.79	3,595.93	7,819.52
iii) 14% Secured Bonds	—	—	14,417.11
d) Trade dues and other current liabilities (including provision)	5,684.43	5,930.33	6,576.26
	56,804.78	79,894.10	1,11,064.23
Assets			
e) Gross block	29,639.06	33,716.03	48,736.08
f) Less Depreciation	2,379.44	3,355.82	5,173.77
g) Net fixed assets	27,259.62	30,360.21	43,562.31
h) Capital work-in-progress	11,653.74	22,972.36	34,783.51
i) Current Assets, Loans & Advances	17,781.61	26,537.48	32,698.40
j) Investments	—	—	—
k) Miscellaneous Expenses & Losses.	109.81	24.05	20.01
	56,804.78	79,894.10	1,11,064.23
l) Capital employed	51,010.54	73,939.72	1,04,467.96
m) Net Worth	33,522.59	52,166.23	63,774.67

NOTES

- (i) Capital employed represents net fixed assets including work in progress plus working capital.
- (ii) Net worth represents paid-up capital plus reserves and surplus less intangible assets.
- (iii) Only Baira Siul Project at Surangani(HP), Loktak Project at Manipur and Chukha Transmission System (WB) started Commercial Production w.e.f. 1.4.1982 and June, 83 and Nov. 86 respectively and remaining Projects are still under construction stage.

2. CAPITAL STRUCTURE

Debit Equity Ratio: Debit equity ratio for the Company was 0.56:1 in 1984-85 and 0.45:1 in 1985-86 and 0.70:1 in 1986-87.

3. RESERVES & SURPLUS

Reserve and surplus of Rs. 2344.74 lakhs in 1984-85 Rs. 4142.16 Lakhs in 1985-86 and Rs. 6067.08 lakhs in 1986-87 amounted to 4.13%, 5.18% and 5.46% of Total liabilities respectively and 7.49% and 8.62% and 10.51% of Equity Capital respectively.

4. LIQUIDITY AND SOLVENCY

- The percentage of Current assets to total net assets varied from 31.30 in 1984-85 to 33.22 in 1985-86 and to 29.44 in 1986-87.
- The percentage of Current assets to current liabilities (including provisions) varied from 312.81 in 1984-85 to 447.49 in 1985-86 and to 497.22 in 1986-87.
- The percentage of quick assets (Sundry Debtors, Loans & Advances, Cash & Bank balance) to current liabilities (excluding provisions) increased from 285.21 in 1984-85 to 371.07 in 1985-86 and to 410.60 in 1986-87.

5. WORKING CAPITAL

The working capital (current assets, loans and advances less trade dues and current liabilities excluding provisions for gratuity) of the company at the close of each of the three years ending 31st March, 1987 amounted to Rs. 12097.18 lakhs and Rs. 20607.15 lakhs and Rs. 26122.14 lakhs respectively. The working capital as on 31.3.87 was financed through loans from Government of India, 14% secured Bonds and from other sources.

6. SOURCES AND USES OF FUNDS

Funds amounting to Rs. 3742.87 lakhs from internal sources (Reserves, Depreciation & Provisions) and Rs. 29245.21 lakhs from other sources were utilised during the year 1986-87 as shown below:-

	Rs. in lakhs
Gross block	15020.05
Capital work-in-progress	11811.15
Current Assets, Loans & Advances	6156.88
	<hr/>
Investment & Misc. expenditure to the extent not written off	32988.08

7. WORKING RESULTS

The profit incurred by the Company for the last 3 years were as follows:-

	Profit for the year (Rs. in lakhs)	Percentage of Profit to paid-up Capital
1984-85	2145.58	6.86
1985-86	1879.18	3.91
1986-87	1924.92	3.33

8. COST TRENDS

The table below indicates the percentage of cost of sales to sales during the last three years:-

	1984-85	1985-86	1986-87
1. Sales excluding excise duty & sales tax.	3549.69	4654.12	5925.01
2. Less profit during the year.	2145.58	1879.18	1924.92
3. Cost of sales	1404.11	2774.94	4000.09
4. Percentage of cost of sales to Sales	39.56	60.38	67.51

9. PRODUCTION PERFORMANCE:

The value of production for the last three years is worked out below:-

			(Rs. in lakhs)
1. Sales (inclusive of excise & sales tax)	3645.26	4742.77	6012.03
2. Closing stock of finished goods and work-in-progress.	—	—	—
3. Opening stock of finished goods work-in-progress	—	—	—
4. Value of production (1-2-3)	3645.26	4742.77	6012.03

The percentage of value of production to net worth varied from 10.87 in 1984-85 to 9.09 in 1985-86 and to 9.43 in 1986-87). The percentage of value of production to total net assets of the Company varied from 6.42 in 1984-85 to 5.94 in 1985-86 and to 5.41 in 1986-87.

10. INVENTORY & PRODUCTION

The following table indicates the position of inventory and its distribution at the close of the last three years:

	1984-85	1985-86	(Rs. in Lakhs) 1986-87
Store & Spares Parts	1568.96	4531.54	5696.36

11. SUNDRY DEBTORS

The following table indicates the volume of book debts and sales for the last three years:-

As on	Total Book debts consi- dered good	Sales	(Rs. in lakhs) Percentage of Debtors to Sales
31st March, 1985	3521.97	3645.26	96.62
31st March, 1986	4843.25	4742.77	102.12
31st March, 1987	5384.50	6012.03	89.56

The sundry debtors represented 10.74 months sales in 1986-87 as against 12.25 in 1985-86 and 11.59 in 1984-85. Debts of Rs. 4.24 Crores were outstanding for more than one year as on 31.3.87.

New Delhi.
Dated. 25th Sept. 1987

(S.C. ANAND)
Member Audit Board,
and Ex-Officio, Director
of Commercial Audit (III)
New Delhi.

**INFORMATION REQUIRED UNDER SECTION 217 (2A) OF THE COMPANIES ACT, 1956
READ WITH COMPANIES (PARTICULARS OF EMPLOYEES) RULES, 1975.**

Name & Designation	Remuneration (Rs.)	Nature of employment (Contractual or otherwise)	Qualification and experience	Date of commencement of employment in NHPC	Age (years)	Last employment held
1	2	3	4	5	6	7
(A) Particulars of employees employed throughout the financial year who were in receipt of remuneration not less than Rs. 36,000/- p.a.						
S/Shri						
Abbey, V.K.	42,068	Regular	B.Sc. Engg. (Mech.) (16 years)	12.8.81	37	Resident Engineer, Western India Erectors Ltd., Pune
Dy. Manager						
Aggarwal, A.B.	46,586	Regular	B.Sc. Engg. (Mech.) (9 years)	06.2.79	29	—
Dy. Manager						
Aggarwal, A.K.	53,993	Regular	B.A. (Hons.), PG Dip. in pers. Mngt. & Labour Welfare (16 years)	18.12.81	37	Sr. PAO, Cement Corporation of India Ltd.
Dy. Manager						
Aggarwal, A.K.	40,299	On deputation from Haryana Irrigation Deptt.	B.E. (Civil) (11 years)	27.9.79	32	A.E., Haryana Irrigation Department.
Engineer						
Aggarwal, A.R.	65,149	Regular	B.E. (Elect.) (15 years)	18.6.77	39	A.E., UPSEB
Sr. Manager						
Aggarwal, C.L.	68,528	On deputation from PSEB	B. Tech. (Hons), M.Sc. Engg. (Elect.) (20 years)	8.2.86	48	S.E., PSEB
Chief Project Manager						
Aggarwal, L.N.	45,108	Regular	B.E. (Elec.) (4 years)	13.12.86	26	—
Asstt. Manager						
Aggarwal, M.N.	62,797	Regular	B.Com (Hons), ACA (18 years)	16.4.85	42	Dy. Fin. Mgr., Engg. Projects (India) Ltd.,
Manager						
Aggarwal, P.C.	45,141	On deputation from HPSEB	Diploma in Mech. Engg. (20 years)	28.9.85	42	Junior Engineer, HPSEB
Engineer						
Aggarwal, S.K.	47,347	Regular	B.Tech (Elec.) PG Dip. in Project Mgmt. (8 years)	22.5.79	29	Production Engineer, Vishal Electricals, Meerut.
Dy. Manager						
Aggarwal, S.K.	41,627	Regular	B.Sc (Engg.) (Civil) (10 years)	20.8.79	32	Disign Asstt. Baira Siul Project, Govt. of India
Asstt. Manager						
Allwadhi, C.L.	42,563	On deputation from H.P. Education Deptt.	Diploma in Mech. Engg. (21 years)	7.2.85	43	Asstt. Engineer, H.P. Education Deptt.
Engineer						
Ahluwalia, D.S.	37,514	Regular	B.Com., ICWA (4 years)	28.6.82	28	—
Accounts Officer						
Ahuja, C.S.	41,604	Regular	B.Sc., M.A. (Maths) (16 years)	23.9.80	37	Research Asstt., B.S.L. Project, Sunder Nagar (H.P.)
Research Officer						
Aima, P.L.	38,607	Regular	B.A., SAS (23 years)	30.11.81	50	Section Officer, A.G., J&K.
Accounts Officer						
Alam, M.A.	42,787	Regular	B.Sc. (Engg.) (Elect.) (5 years)	1.5.81	29	—
Asstt. Manager						
Amar Nath	61,251	Regular	B.A., SAS (30 years)	20.9.76	55	Section Officer, Indian Audit & Accounts Deptt.
Sr. Manager						
Anantha, A.	48,875	Regular	B.E. (Mech.) (9 years)	6.6.77	32	A.E., Haryana Irrigation Deptt.
Dy. Manager						
Appa Rao, Y.N.	52,770	Regular	B.E. (Civil), M.E. (Hydropower) (18 years)	1.8.77	41	Asstt. Engineer, CWC
Manager						
Arora, V.K.	43,643	Regular	B.Sc., ACA (10 years)	4.10.78	33	Chartered Accountant, Vishal Pvt. Ltd., New Delhi.
Asstt. Manager						
Arun Kumar	53,996	Regular	B.Sc. Engg. (Civil) (14 years)	21.5.84	36	A.E., HPSEB
Asstt. Manager						
Ashok Kumar	44,015	Regular	B.Sc. Engg. (Civil) (8 years)	22.5.79	32	CTA (Civil) HPSEB
Asstt. Manager						
Awadesh Prasad	46,094	Regular	B.Sc. Engg. (Elect.) (7 years)	17.9.80	31	Engineer Trainee, Somaya Sugar Works Somayawari, Karnataka.
Asstt. Manager						

1	2	3	4	5	6	7
Azad, S.K. Asstt. Manager	42,225	Regular	B.A. (Hons) (13 years)	16.5.81	46	Section Officer A.G.C.R., New Delhi.
Bahadur, A.K. Dy. Manager	47,090	On deputation from UPSEB	M.Sc. Engg. (Elect.) (12 years)	2.11.79	38	Asstt. Engineer, UPSEB
Bajaj, V.M. General Manager	95,095	Regular	B.E. (Civil) (31 years)	10.5.79	54	Director (U.T.) CWC
Balmukund Manager	67,725	Regular	B.Sc. Engg. (Mech.) (16 years)	16.12.78	38	Asstt. Engineer, EIL
Bandopadhyay, M.R. Sr. Manager	72,073	Regular	M.Sc. (Applied Geology) (25 years)	29.12.80	50	Geologist (Sr.) GSI.
Banerjee, A.K. Personnel Officer	43,199	Regular	M.A. (Eco.) LLB. PG Dip. in Pers. Mgt. & I.R. (12 years)	11.7.77	38	Junior Investigator Ministry of Industry, Govt. of India
Banerjee, P.K. Dy. Manager	50,924	Regular	B.Sc. Engg. (Mech.) (10 years)	9.9.77	34	Officer Trainee, IOC
Banerjee, P.P. Manager	54,997	Regular	B.Com., AICWA (25 years)	10.4.84	49	Chief Accountant, Sadik Industrial & Trading Co., UAE.
Bansal, L.R. Asstt. Manager	48,178	Regular	B.E. (Civil) (6 years)	1.5.81	29	Site Engineer, M/s. OM Prakash Baldev Krishan, Engineers & Contractors.
Basu Manoj Geologist	51,212	Regular	M.Sc. (Applied Geology) (8 years)	11.10.82	34	Geologist, SWRC, Ground Water Deptt., Rajasthan.
Behal, K.K. Sr. Draftsman	37,181	Regular	Dip. in Draftsmanship (Mech.) (12 years)	31.3.79	45	Draftsman Gr. I, CEA.
Bhalla, S.K. Dy. Manager	59,017	Regular	B.Sc. Engg. (Civil) (12 years)	16.5.77	33	Jr. Engineer, DDA, New Delhi.
Bhalla, S.N. Manager	56,384	Regular	B.A. (23 years)	30.11.79	52	Research Officer, Central Vigilance Commission.
Bhamrah, S.S. Dy. Manager	48,574	Regular	AMIE (Elect.) (22 years)	13.8.77	52	Project Engineer, BSL Project.
Bhandari, S.P. Private Secretary	46,281	Regular	B.A. (27 years)	30.6.79	46	Steno, Director General of Civil Aviation.
Bhardwaj, Dr. S.C. Sr. Medical Officer	58,589	Regular	M.B.B.S. (11 years)	15.12.78	40	Asstt. Medical Officer, Northern Railways, New Delhi.
Bhardwaj, S.R. Sr. Manager	65,609	Regular	M.A. (Eng.) Dip. in Journalism, Diploma in Marketing and Sales Mgt. (26 years)	11.9.81	44	Public Relations-Officer, National Fertilizers Ltd.
Bhardwaj, R.P. Engineer	37,348	On Deputation from HPSEB	Diploma in Civil Engg. (20 years)	29.8.85	41	A.E., HPSEB.
Bhargava, Ashok Kumar Asstt. Manager	36,304	Regular	B.E. (Elect.) (5 years)	15.2.82	26	Engineer (Trainee) M/s. Bajaj Electrical Ltd.
Bhargava, D.P. Asstt. Manager	48,283	Regular	B.E. (Elect.) (8 years)	20.2.79	30	—
Bhargava, P.K. Dy. Manager	50,184	Regular	B.E. (Elect.) DIIIT (Power Appl. & Systems) Diploma in MM (6 years)	16.6.79	29	—
Bhatia, R.C. Accounts Officer	50,180	Regular	B.A., SAS (22 years)		43	Section Officer, A.G., Haryana.
Bhatia, R.K. Accounts Officer	51,168	Regular	National Dip. in Commerce, SAS (26 years)	24.12.76	52	Accountant, Railway Board, Ministry of Railways.
Bhatia, V.S. Office Supdt.	42,351	Regular	B.A. (35 years)	1.10.77	57	Assistant. Deptt. of Power, Govt. of India.
Bhatnagar, Amod Executive Asstt.	48,590	Regular	I.Sc. (24 years)	23.7.76	45	Stenographer, UPSEB.
Bhatnagar, I.M.L. Engineer	41,329	On deputation from HPSEB	Dip. in Mech. Engg. (20 years)	9.10.85	41	AE, HPSEB.
Bhatnagar, (Dr.) M.S. ACMO	52,276	Regular	M.B.B.S. (20 years)	27.8.81	45	Medical Officer, Neoli Sugar Mills, Allahabad.

1	2	3	4	5	6	7
Bhatnagar, Shashank Asstt. Manager	45,402	Regular	M.Sc. (Geology) (13 years)	6.4.85	36	Geologist, GSI.
Bhatt, N.D.	45,493	Regular	B.Com., SAS (29 years)	18.7.77	51	Section Officer, Office of the Chief Auditor, Central Railway.
Asstt. Manager Bhattacharjee, J.	47,556	Regular	B.Sc., AICWA SAS (32 years)	24.1.80	51	Accounts Officer, IFC, Govt. of Manipur.
Manager Bhattacharjee, M.N.	79,947	Regular	M.A. (Eco), PG Diploma in Pers. Mgt. (33 years)	30.12.81	55	Asstt. Personnel Manager, Bharat Aluminium Co. Ltd.
Sr. Manager Bhattacharjee, P.	47,576	Regular	M.Sc., MBA (11 years)	12.3.85	39	Sr. Personnel Officer, BHEL.
Asstt. Manager Bhattacharya, T.J.	41,682	Regular	B.E. (Civil) (9 years)	9.11.82	35	Asstt. Engineer, Meghalaya State Electricity Board
Engineer. Binopal, A.S.	42,781	Regular	B.E. (Mech.) (19 years)	19.5.78	46	Shift Engineer, Beas Project, Talwara.
Manager Bisht, B.S.	45,000	Regular	B.E. (Civil) (11 Years)	16.5.77	32	Engineer (Civil) H.C.C. Ltd., Bombay.
Dy. Manager Bhim Sain	45,421	Regular	Matric (34 Years)	1.8.76	54	UDC, C.W.C.
O.S. Boni, O.N.	57,490	Regular	B.Sc. Engg. (Civil) (26 Years)	29.7.77	47	Executive Engineer, Ministry of Energy.
Sr. Manager Brijesh Kumar	52,000	Regular	M.A. (Pol. Sc.), B.L. M.A. (LSW) (21 years)	12.7.78	48	Personnel Officer, Bokaro Steel Ltd.
Sr. Manager Bhugra, R.L.	45,903	Regular	B.A. SAS (30 years)	10.6.77	55	Accountant, Ministry of Railways.
Accounts Officer Chadha, K.C.	48,446	Regular	B.Sc. Engg. (Elect.) (11 years)	5.8.77	35	Supervisor, CEA
Dy. Manager Chadha, N.K.	43,138	Regular	B.A., AICWA (6 years)	7.6.82	35	Junior Manager (F&A) Rourkela Steel Plant
Accounts Officer Chadha, R.K.	56,694	Regular	M.B.B.S (19 years)	9.9.80	41	Medical Officer, Ministry of Health, Govt. of India.
Asstt. Chief Medical Officer Chakraborty, A.C.	38,833	Regular	B.A. SAS (34 years)	3.3.76	54	Section Officer, A.G., Manipur.
Manager Chakraborty, D.	53,019	Regular	M. Com., AICWA (16 years)	9.6.78	50	Sr. Accountant, M/s. NMDC Ltd. Bacholi (MP)
Dy. Manager Chakraborty, S.	50,087	Regular	B.Sc. Engg. (Elect) (14 years)	1.1.77	37	Trainee Engineer, WBSEB
Asstt. Manager Chaku, B.L.	50,546	Regular	B.Sc. SAS, (30 years)	16.8.80	54	Accounts Officer, Office of A.G. J&K
Dy. Manager Chanana, A.K.	60,094	Regular	B.E. (Elect.) (15 years)	31.12.82	40	Asstt. Engineer, PDD, J&K
Dy. Manager Chandra Shekhar, P.	43,634	Regular	B.E. (Elect.) (12 years)	27.01.83	39	Dy. Engr., B.E.L. Bangalore.
Dy. Manager Chandrasekaran, A.	44,719	Regular	B.E. (Civil) (17 years)	20.11.78	42	AE, PWD, Madras
Manager Charan Das	39,356	Regular	Matric (21 years)	17.2.77	40	Steno, Ministry of Railways
Private Secretary Choudhary, B.K.	59,575	Regular	B.E. (Civil) (21 years)	18.11.81	40	Executive Engr., CPWD, Govt. of India.
Dy. Manager Choudhary, (Dr.) G.H.	60,386	On Deputation from Ministry of Health and family Welfare	M.B.B.S. (16 years)	15.5.78	41	Medical Officer, Ministry of Health & Family Welfare.
Sr. Medical Officer Choudhary, H.C.	41,186	Regular	B.E. (Elect.) (5 years)	6.5.81	28	—
Asstt. Manager Choudhary N.C.	42,323	Regular	B.A., SAS (23 years)	1.6.81	46	Section Officer, O/o A.G., Meghalaya
Accounts Officer Chaudhary, N.K.	48,985	Regular	CE (I) MIE LL.B. (17 years)	15.7.81	40	Resident Engineer, NBCC.
Dy. Manager Chaudhary, S.P.	79,410	On deputation from HPSEB	B.Sc. Engg. (Civil) (26 years)	13.9.85	49	SE., HPSEB
Chief Engineer Chauhan, Maj. S.S.	58,252	Regular	Degree in Civil Engg. (22 years)	19.3.79	43	Major in Indian Army
Manager						

1	2	3	4	5	6	7
Chauhan, D.C. Accounts Officer	41,834	Regular	B.A., SAS (16 years)	12.8.80	37	Section Officer, CGDA, New Delhi.
Chauhan, D.S. Asstt. Manager	39,933	Regular	B.Sc., LL.B., D.LL., LW & PM, M.A. (Pub. Admn.) (9 years)	17.1.85	33	Labour Officer HCC Ltd.
Chauhan, V.P.S. Asstt. Manager	39,618	Regular	B.E. (Civil) (7 years)	8.2.80	28	Engineer, M/s. Ahuja Kashyap Pvt. Ltd., New Delhi.
Charian, Mathew Asstt. Manager	38,316	Regular	B.Sc. Engg. (Elect.) (5 years)	15.2.82	27	—
Chhabra, C.P. Chief Engineer	86,445	On deputation from PSEB	B.E. (Elect & Mech.) (34 years)	8.8.83	57	Supdtg. Engineer, Bhakra Beas Management Board
Chooker, Vinay Asstt. Manager	37,231	Regular	B.E. (Civil) (5 years)	26.2.82	27	—
Chopra, A.K. Accounts Officer	45,177	Regular	M.A., SAS (20 years)	1.10.83	40	Section Officer, A.G., Haryana.
Chopra, J.C. Private Secretary	47,129	Regular	Matric (32 years)	19.5.79	51	P.A., Ministry of Energy, New Delhi.
Chopra, M.L. Sr. Manager	72,319	Regular	B.A., PG Dip. in Public Administration (27 years)	27.11.81	55	Liaison Officer, Chukha Hydel Projecr, Bhutan.
Chopra, Opinder Dy. Manager	57,667	Regular	B.A. PG Dip. in Labour Laws, Lab. Welf & Pers. Mgt. (22 years)	19.4.79	39	Office Supdt. (Pers.) BALCO
Chopra, Sunil Engineer	36,946	Regular	B.Sc. Engg. (Civil) (8 years)	23.4.84	32	AEE, NPCC, New Delhi.
Dandecha, B.V. Dy. Manager	42,991	Regular	B.E. (Mech.) (8 Years)	22.2.79	34	—
Darde, P.N. Manager	73,236	Regular	B.E. (Civil) M.Tech. (Water Resources) (19 Years)	30.1.80	46	Lecturer, Delhi College of Engg.
Dass, Felix Dy. Manager	54,149	Regular	B.E. (Elect.) (17 Years)	10.12.77	42	S.D.O., Beas Construction Board.
Dass, S.K. Dy. Manager	52,108	Regular	B.E. (Civil) PG Dip. in Water Resources Dev. (17 Years)	24.3.81	40	S.D.O., Irrigation Depptt., Govt. of Assam.
Dass, P.K. Engineer	40,511	Regular	Diploma in Mining Engg. (18 Years)	20.3.81	42	—
Deorari, B.D. Dy. Manager	50,016	Regular	M.A. (13 Years)	23.5.81	49	Dy. Manager (Proc.) DSIDC.
Dhal, G.C. Dy. Manager	43,684	Regular	B.Sc. Engg. (Elect) (7 Years)	22.5.79	30	—
Dhaka, O.P. Asstt. Manager	43,462	On deputation from HPSEB	Dip. in Civil Engg. AMIE (20 Years)	22.4.85	40	A.E. HPSEB
Dhama, (Dr.) Sushil Sr. Medical Officer	39,690	Regular	M.B.B.S. (9 Years)	4.7.81	31	Medical Officer, H.P. Health Services.
Dhar, D.K. Engineer	42,534	Regular	B.E. (Civil) (5 Years)	27.12.84	30	J.E. PWD J&K
Dhar, K.K. Asstt. Manager	43,394	On deputation from PWD, J&K	Dip. in Mech. Engg. (32 Years)	20.2.84	54	Executive Engineer PWD, J&K
Dhar, S.K. Asstt. Manager	43,578	On deputation from PWD, J&K Govt.	B.E. (Mech) (19 Years)	27.1.83	43	Executive Engineer, PWD J&K.
Dhawan, Gopal Asstt. Manager	42,854	Regular	M. Tech. (Applied Geology) (7 Years)	1.2.80	31	—
Dhillon, H.S. Dy. Manager	53,062	On Deputation from HPSEB	Dip. in Civil Engg. AMIE (26 Years)	23.5.81	47	AEE, HPSEB
Dhiman, J.C. Asstt. Manager	38,957	Regular	B.Sc. Engg. (Civil) (10 Years)	3.11.80	36	Supervisor, B.S. Project, Chamba, H.P.
Dhir, S.K. Engineer	38,442	Regular	B.Sc. Engg. (Civil) (4 Years)	11.10.82	26	—
Divatia, (Miss) E. Chief Engineer	83,108	Regular	B.E. (Civil) M. Tech. (28 Years)	22.3.79	50	Depupty Director, CWC

1	2	3	4	5	6	7
Diwedi, M.G. Manager	56,850	Regular	M.E. (Elect.) (15 Years)	13.3.78	41	Asstt. Engr. UPSEB.
Dodeja, S.K. Manager	51,234	Regular	AMIE (Mech.) AMACSI (18 Years)	12.10.78	38	AEE, Border Roads Organisation.
Dubey, S.N. Asst. Manager	41,702	Regular	B.Sc. Engg. (Elec.) (7 Years)	17.6.82	33	Asstt. Engr. Meghalaya State Electricity Board
Duggal, N.K. Engineer	45,032	Regular	Dip. in Mech. Engg., Dip. in Bus. Mgt. (15 Years)	12.3.84	41	---
Dutta, A.K. Engineer	55,243	Regular	Dip. in Engg. (Mech.) (13 Years)	15.5.78	37	Supervisor, CEA
Dutta, K.P. Asstt. Manager	61,052	Regular	B.Sc. PG Dip. in PM & IR, PG Dip. in PR. (11 Years)	15.3.82	33	Captain in Army
Dutta, S.N. Asstt. Manager	40,356	Regular	B.E. (Civil) (10 Years)	10.9.82	33	AE, Chukha Hydel Project, Bhutan
Dyal, I.D. Asstt. Manager	40,634	Regular	B. Tech. (Civil) (6 Years)	2.6.80	30	---
Easwar, I. Asstt. Manager	49,904	Regular	M.E. (Soil Mech. and Foundation)	1.2.80	30	Engineer, Modi & Associates
Gagroo, G.M. Land Collector	47,624	On deputation from Land & Rev. Deptt. J&K.	Kashmir Adm. Services (34 Years)	27.7.81	51	Asstt., (Commerce) Land & Rev. Deptt., J&K.
Gandotra, B.M. Dy. Manager	38,020	On deputation from Irrigation Deptt., J&K	B.Sc. Engg. (Civil) (19 Years)	1.12.75	46	Asstt. Engr., Irrigation Deptt. J&K.
Gandotra, S.K. Asstt. Manager	47,875	On deputation from Rural Dev. Works Deptt., J&K	B.E. (Civil) (19 Years)	14.11.84	41	Executive Engr., Rural Dev. Works Deptt., J&K.
Gandotra, V.K. Asstt. Manager	41,242	On deputation from J&K, PWD	BE (Mech.) (19 Years)	20.2.84	43	A.E., Irrigation Divn., PWD (J&K).
Gangopadhyaya, A.K. Sr. Manager	66,269	Regular	B.E. (Civil) (21 Years)	10.9.81	41	Xen, PWD, Govt. of Goa, Daman & Diu, Panaji.
Ganju, B.L. Manager	64,722	On deputation from HPSEB	B.E. (Civil) (28 Years)	30.9.85	43	Offg. S.E., HPSEB
Garg, Arvind Asstt. Manager	40,572	Regular	B.Sc. Engg. (Civil) (6 Years)	5.5.80	30	---
Garg, A.K. Asstt. Manager	41,047	Regular	B.A. (6 Years)	6.11.81	30	---
Garg, M.P. Manager	75,100	On deputation from HPSEB	B.E. (Civil) (20 Years)	24.9.85	44	Offg. SE, HPSEB
Garg, H.R. Dy. Manager	53,225	On deputation from PWD, Punjab	AMIE (Civil) (22 Years)	28.2.80	45	Sectional Officer, Irrigation Deptt. Punjab.
Gautam, P.S. Asstt. Manager	40,783	Regular	B.Sc. Engg. (Elect.) (17 Years)	7.8.77	44	Shift Engineer, BSL Project.
Ghosh, M.K. Chief Engineer	77,019	Regular	B.E. (Civil) (26 Years)	23.2.79	48	XEN, Border Roads Organisation.
Ghosh, L.N. Dy. Manager	53,175	Regular	B.Com, MBA Dip. in Budgetary & Fin. Control PG. Dip. in Per. Mgt. Dip. in data processing (22 Years)	1.10.81	42	Dy. Accounts Manager MMTC Ltd.
Ghosh, N.C. Engineer.	50,000	On deputation from PWD Tripura.	Dip. in Elect. Engg. (21 Years)	1.1.77	43	Overseer, PWD, Tripura.
Ghosh, S.K. Engineer	51,959	Regular	B.Sc. Overman Certificate of Competency (8 Years)	7.6.78	43	---
Gianchandani, M.L. Private Secretary	47,018	Regular	B.A. (26 Years)	1.6.79	43	Steno, Deptt. of Power, Ministry of Energy
Goel, M.K. Asstt. Manager	44,774	Regular	B.Tech (Elect.) (7 Years)	11.3.80	30	Trainee Engineer, Ralli Chemicals Ltd. Kanpur.

1	2	3	4	5	6	7
Goel, S.P. Asstt. Manager	38,623	Regular	B.Sc. Prod'n. Engg. (Mech.) (14 Years)	20.1.78	40	A.E. Baira Siul H.E. Project, Govt. of India.
Goel, P.P. Adm. Officer	46,642	Regular	Matric (33 Years)	23.5.80	49	P.A. in CW & PC
Goyal, J.M. Sr. Manager	52,169	Regular	B.A. S.A.S. (Railways) (35 Years)	15.4.78	55	Accounts Officer, NMDC Ltd.
Goela, Y.S. Dy. Manager	49,690	Regular	B.Sc. Engg. (Elect.) (20 Years)	1.1.77	38	—
Goyal, T.K. Dy. Manager	48,454	Regular	B.E. (Mech.) AMIE (C) (19 Years)	22.4.81	42	Shift Engineer, Beas Project, Talwara.
Goel, R.K. Asstt. Manager	41,708	Regular	B.E. (Elect.) (4 Years)	31.7.82	26	—
Gotra, Major, G.S. Sr. Manager	60,719	Regular	Degree in Engg. (Civil) LL. B. (23 Years)	12.3.79	50	Major in Indian Army
Grover, Ramesh Engineer	36,006	Regular	B.Sc. Engg. (Mech.) (7 Years)	30.10.84	29	A.E. U.P. State Bridge Corporation, Lucknow.
Grover, S.K. Dy. Manager	50,743	Regular	AMIE (Civil), BE (Mech) (14 Years)	4.3.81	39	Asstt. Resident Engr. U.P. Rajkiya Nirman Nigam.
Gulati, B.R. Asstt. Engr.	52,809	Regular	Dip. in Elec. Engg. (11 Years)	31.12.80	33	Supervisor, C.E.A.
Gulati, Major V. Sr. Manager	70,498	Regular	AMIE (Mech.) (20 Years)	1.3.80	40	Major in Indian Army.
Gupta, Ashok Dy. Co. Secretary	55,575	Regular	B.Sc. (Hons), LL.B., DPM, ICWA (Inter) (12 Years)	16.11.82	34	Co. Secretary Rajasthan State Seeds Corpn. Ltd, Jaipur
Gupta, A.K. Dy. Manager	53,751	Regular	B.E. (Hons), (Mech.) (10 Years)	24.11.77	31	Apprentice (Ind. Engineering) Hindustan Brown Boveri Ltd.
Gupta, D.K. Engineer	38,391	On deputation from PDD, J&K	B.E. (Mech.) (18 Years)	11.9.80	41	A.E., J&K (PDD)
Gupta, D.M. Asstt. Manager	52,205	On deputation from J&K (Irrigation Deptt.)	B.E. (Mech.) (17 Years)	1.2.84	41	A.E., Irrigation Deptt. J&K
Gupta, D.R. Engineer	39,260	On deputation from PWD, J&K	B.Sc. B.E. (Mech.) (19 Years)	4.8.81	47	A.E., PWD, J&K
Gupta, Gopal Dy. Manager	49,146	Regular	B.Sc. (Engg.) (Elect.) (9 Years)	19.3.79	31	Supervisor, Salal Project.
Gupta, Dr. G.C. Asst. Chief Medical Officer	57,682	Regular	M.B.B.S. (17 Years)	24.4.81	40	Major in Indian Army
Gupta, H.R. Accounts Officer	45,363	Regular	B.Com, LL.B. (33 Years)	7.5.81	55	Section Officer, Office of A.G. Simla.
Gupta, (Dr.) Jugal Kishore Medical Officer	44,861	On deputation from Health Deptt., J&K	M.B.B.S (21 Years)	26.12.80	44	DMO, Health Deptt. J&K.
Gupta, (Dr.) J.P. Dy. Manager	62,264	Regular	M.A., Ph.D., Prabhakar (Hons. in Hindi)	15.11.78	54	Asstt. Edu. Officer, Central Hindi Dte.
Gupta, K.C. Manager	46,613	On deputation from Mech. Engg. Deptt. J&K	B.E. (Mech.) (22 Years)	4.6.84	42	S.E., Mech. Engg. Deptt., J&K.
Gupta, K.D. Dy. Manager	43,135	On deputation from PWD, J&K	B.E. (Civil) (19 Years)	7.5.79	42	Engineer, PWD, J&K.
Gupta, K.K. Engineer	39,721	On deputation from HPSEB	B.E. (Civil) (8 Years)	6.9.84	31	A.E. HPSEB
Gupta, Dr. (Mrs) Manju Sr. Medical Officer	38,328	Regular	MBBS, DGO (13 Years)	24.4.81	37	Med. Officer, BHEL
Gupta, M.L. Chief Engineer	77,991	Regular	B.Sc. Engg. (Mech) (20 years)	29.4.80	42	Dy. Manager, BHEL
Gupta, M.L. Asstt. Manager	37,593	On deputation from HPSEB	Dip. in Civil Engg. (15 Years)	6.2.78	39	A.E., HPSEB
Gupta, P.K. Dy. Manager	58,267	Regular	B.E. (Civil) (19 Years)	10.7.81	43	Asstt. Director, CWC.
Gupta, P.K. Asstt. Manager	42,988	Regular	B.Sc. Engg. (Mech.) (5 Years)	12.4.82	30	—
Gupta, Rakesh Programmer	46,792	Regular	B.E. (Hons) (Mech.) (10 Years)	24.11.77	31	Apprentice (Industrial Engg.) Hindustan Brown Boveri Ltd.,

1	2	3	4	5	6	7
Gupta, R.C. Dy. Manager	39,166	On deputation from PWD, J&K	B.E. (Mech.) (19 Years)	10.8.77	43	Executive Engineer, PWD, J&K.
Gupta, R.K. Dy. Manager	54,134	Regular	B.E. (Civil) (7 Years)	22.5.79	30	—
Gupta, R.M. Engineer	38,803	On deputation from HPSEB	B.E. (Civil) (5 Years)	6.9.84	28	A.E., HPSEB
Gupta, S.P. Chief Engineer	58,772	On deputation from PDD, J&K	B.E. (Elect.) (25 Years)	25.11.85	49	S.E., PDD, J&K.
Gupta, S.C. Engineer	41,918	On deputation from PWD, J&K	B.E. (Mech.) (13 Years)	2.5.83	43	A.E. (Mech) PWD J&K
Gupta, S.C. Dy. Manager	44,640	Regular	B.E. (Civil) (9 Years)	27.10.77	33	—
Gupta, S.P. Engineer	38,719	On deputation from HPSEB	B.E. (Civil) (7 Years)	6.9.84	30	A.E. H.P.S.E.B.
Gupta, (Dr.) Saroj Kanta L.M.O	50,298	On deputation from J&K Govt. Health Deptt.	M.B.B.S (18 Years)	18.12.80	45	Asstt. Surgeon, Health Deptt. J&K
Gupta, S.C. Engineer	42,178	On deputation from PWD J&K	B.E. (Elect.) (20 Years)	18.10.82	43	A.E. (Elect) PWD, J&K
Gupta, S.P. Manager	53,000	Regular	B.E. (Civil) (12 Years)	15.5.78	46	A.E. Salal H.E. Project
Gupta, T.C. Asstt. Manager	51,249	Regular	B.Sc. Engg. (Mech.) (8 Years)	15.7.78	37	Technical Asstt. Ministry of Energy, Govt. of India.
Gupta, V.K. Asst. Manager	51,378	Regular	B.E. (Civil) (6 Years)	2.6.80	28	—
Gupta, V.K. Asstt. Manager	52,000	Regular	B.Sc. Engg. (Civil) (9 Years)	9.4.79	31	Graduate Engineer Trainee, Indian Oil Corporation.
Gupta, V.K. Asst. Manager	57,391	Regular	B.Sc. Engg. (Elect.) (14 Years)	30.1.81	39	Engineer, SAE (India) Ltd.
Gupta, V.L Engineer	37,814	On deputation from HPSEB	Dip. in Civil Engg. (15 Years)	16.4.86	39	AE., HPSEB
Gupta, V.P. Dy. Manager	46,564	Regular	M.Sc. Engg. (Mech.) (22 Years)	29.5.80	45	AEE, NPCC.
Habbu, P.G. Asstt. Manager	47,456	Regular	BE (Civil) (8 Years)	16.6.84	31	Engineer, (Civil) Karnataka Power Corpn. Ltd.
Handa, A.K. Engineer	39,504	Regular	B.Sc. Engg. (Civil) (8 Years)	10.5.84	28	Asstt. Engr. (Civil) PWD, Haryana Govt.
Handa, M.K. Dy. Manager	46,234	On deputation from PWD, H.P.	B.Sc. Engg. (Civil) (11 Years)	30.12.81	31	A.E., PWD, H.P.
Hardev Singh Dy. Manager	40,095	Regular	B.Sc. Engg. (Elect) (13 Years)	26.7.77	37	Project Engr. BSL Project, Sunder Nagar (HP).
Hashia, M.L. Sr. Manager	53,654	Regular	B.E. (Civil) (27 Years)	23.7.81	49	Exe. Engineer, PWD, J&K.
Hussain, S.M. Dy. Manager	39,505	Regular	B.Sc. Engg. (Civil) (14 Years)	14.12.81	37	A.E., Bihar Irrigation Deptt.
Hastu, Rajiv Engineer	40,448	Regular	B.E. (Elect) (6 Years)	21.5.84	32	Prodn. Engineer, DEN Sons, Engineers, Jagadhri
Hegde, Umesh V. Asstt. Manager	38,769	Regular	M.Sc. (Geology) (7 Years)	8.2.80	31	—
Ibemeha Devi Medical Officer	37,657	Regular	M.B.B.S. (2 Years)	6.7.84	26	—
Iyer, S.G. Dy. Manager	53,756	Regular	M.A., Dip. in PM & IR (20 Years)	22.12.81	40	Admn. Officer, NBCC.
Jagdish Chander Private Secretary	44,553	Regular	B.A. (30 Years)	19.5.79	50	Steno, Deptt of Company Affairs, New Delhi.
Jaggi, A.L. Chief Engineer	1,00,753	Regular	B.Sc. Engg. (Elect.) (25 Years)	20.1.78	47	Suptdg. Engineer, Baira Siul HE Project,
Jain, A.K. Chief (Accounts)	92,098	Regular	B.Com, ACA (18 Years)	28.11.78	41	Dy. Accounts Manager, IFFCO, New Delhi.
Jain, P.K. Dy. Manager	65,495	Regular	B.Sc. Engg (Elec.) (13 Years)	1.8.77	37	Supervisor, CEA
Jain, S.K. Asstt. Manager	41,969	Regular	B.Tech. (Elect.) (6 Years)	12.11.84	30	Engineer (Trainee) Tata Consulting Engineers, Bangalore
Jain, A.K. Asstt. Manager	49,314	Regular	B.Sc. Engg. (Civil) (6 Years)	14.1.81	29	—

1	2	3	4	5	6	7
Jain, H.C. Asstt. Manager	46,552	Regular	M.A. (Pub. Admn.) PG Dip. in PM & IR (28 Years)	1.6.81	47	Office Supdt. BHEL.
Jain, Jitender Engineer	48,955	Regular	Dip. in Elec. Engg. (15 Years)	31.12.80	36	Supervisor, CEA
Jain, N.C. Manager	61,262	Regular	BE (Civil) (20 Years)	25.9.79	45	SDO, & ADE Irrigation Deptt., Govt. of Rajasthan
Jain, P.K. Dy. Manager	46,917	Regular	B.Sc. Engg. (Elec.) PG Dip. in Business Mgmt. & Industrial Admn. (13 Years)	26.4.77	37	Technical Asstt., Central Board Irrigation & Power.
Jain, T.C. Chief Engineer	98,782	Regular	B.Sc. Engg. (Elec.) (31 Years)	15.7.77	54	Dy. Director, CEA.
Jain, T.C. SPS	46,880	Regular	B.A. (Hons.) (32 Years)	8.6.77	56	P.A., Ministry of Energy.
Jain, V.K. Dy. Manager	51,977	Regular	B.E. (Elec.) (13 Years)	1.8.77	36	Section Officer, CEA.
Jamwal, S.S. Manager	49,388	Regular	B.E. (Elect.) (18 Years)	9.12.75	41	Asstt. Engineer, PDD J&K
Jasrotra, C.S. Engineer	42,378	On deputation from PHED (J&K)	B.E. (Civil) (15 Years)	22.11.82	45	Asstt. Engineer Public Health Engg. Deptt. (J&K).
Javeri, C.S. Dy. Manager	46,431	Regular	B.E. (Elect) (14 Years)	1.9.82	37	Tech. Asstt. C.E.A.
Joginder Singh Manager	53,663	Regular	B.A. LL.B. M.S.W (16 Years)	10.5.78	41	Pers.-Cum-labour Welfare Officer Punjab Scooters Ltd. Patiala
Johal, R.C. Sr. Supervisor	36,941	Regular	Dip. in Mech. Engg. (11 Years)	1.1.77	33	Supervisor, Loktak H.E. Project
Johri, S.K. Manager	45,177	Regular	M.A. MSW (22 Years)	20.3.78	46	Asstt. Personnel Officer Hindustan Steel Works Construction Corporation Ltd.
Jose, P.C. Manager	50,358	Regular	B.Sc. Engg. (Mech.) (15 Years)	24.12.79	40	Extra Asstt. Director, CWC.
Joshi, K.B. Accounts Officer	42,697	Regular	M.A. (Eco) SAS (21 Years)	16.10.78	42	JAO, CCA/CBEL. New Delhi
Joshi, L.D. Dy. Manager	60,899	Regular	M.A., SAS (32 Years)	12.3.79	54	Section Officer, O/O AG, H.P.
Joshi, K.K. Asstt. Manager	41,404	Regular	B.Sc. Engg. Civil (10 Years)	20.1.78	35	Supervisor, Baira Siul Project,
Joshi, V.K. Chief Engineer	79,297	On deputation from Deptt. of Irrigation Govt. of U.P.	B.E. (Civil) (34 Years)	31.3.79	56	Director, CWC.
Jethwaney, J. (Miss) Dy. Manager	48,083	Regular	M.A. PG Dip. in Advtg. & PR, PG Dip. in Journalism (11 Years)	27.7.78	35	Asstt. Products Manager, Modern Bakeries.
Juneja, R.K. Asstt. Manager	52,698	On deputation from HPSEB	B.E. (Civil) (15 Years)	1.5.84	37	Executive Engineer, HPSEB.
Kalgaonkar, S. Dy. Manager	44,908	Regular	B.E. (Mech.) (6 Years)	14.4.80	29	—
Kaliah, K. Dy. Manager	46,066	Regular	B.E. (Elect.) (14 Years)	29.5.81	50	J.E., NGEF Ltd., Bangalore.
Kalsi, J.S. Dy. Manager	57,711	Regular	Dip. in Civil Engg., B.A. (30 Years)	26.12.78	53	Executive Engineer, HPSEB
Kamal Kapoor, Dy. Manager	49,141	Regular	B.Sc., Engg. (Elect.) (13 Years)	6.8.77	36	Supervisor, CEA.
Kamal Nain Draftsman	36,237	Regular	National Certificate in Draftsmanship (22 Years)	1.7.78	44	Senior Draftsman, C.W.C.
Kanjlia, V.K. Manager	49,284	Regular	B.Sc. Engg. (Elect.) M.Sc. Engg. (17 Years)	8.5.79	41	Asstt. Executive Engineer, PSEB.
Kansal, Sandeep Engineer	44,392	Regular	M.Sc. (Engg. Civil) (7 Years)	11.5.84	33	Asstt. Engineer Haryana Irrigation Deptt.
Kanwar, B.S. Chief Project Mgr.	79,083	Regular	B.Sc. Engg. (Elect.) (24 Years)	26.6.81	45	Executive Engineer, HSEB

1	2	3	4	5	6	7
Kapil, A.K. Dy. Manager	52,415	Regular	AMIE (C) Dip. in Civil Engg. (25 Years)	10.7.81	44	Asstt. Mgr. HPSEB
Kapoor, G.K. Asstt. Manager	56,042	Regular	B.A., SAS (29 Years)	20.4.78	53	Section Officer, Office of AGCR.
Kapur, J.N. Dy. Manager	53,176	Regular	M.A. LL.B. SAS (29 Years)	7.2.81	57	Audit Officer, Northern Railway.
Kapoor, K.K. S.P.S.	45,978	Regular	B.A. (29 Years)	1.6.79	47	P.A., Deptt. of Power, Ministry of Energy.
Kapoor, S.K. Dy. Manager	53,018	Regular	B.A.LL.M., PG Dip. in PM&IR (22 Years)	19.2.77	47	Asstt., Ministry of Railways.
Kapoor, V.K. Manager	65,063	Regular	M. Tech. (Civil) (16 Years)	7.11.78	41	AEE, Hindustan Prefab Ltd.
Kapoor, V.K. Dy. Manager	46,036	Regular	B.Sc. Engg. (Civil) PG Dip. in Hyd. Power (10 Years)	16.5.77	32	J.E., DDA, New Delhi
Kashmiri Lal Engineer	45,660	On deputation from HPSEB	Dip. in Civil Engg. (16 Years)	20.1.78	42	A.E., HPSEB
Kashyap, K.K. Director (Technical)	86,531	Govt. Appointment	BE (Mech.), BE (Elect.) (29 Years)	30.8.84	53	Dy. General Manager, BHEL.
Kashyap, R.N. Asstt. Manager	42,393	Regular	B.E. (Civil) (9 Years)	2.1.78	32	Supr. Baira Siul Project Govt. of India.
Karkum, Dilip Asstt. Manager	46,788	Regular	BE (Civil) (15 Years)	25.7.84	37	Executive Engineer, NPCC.
Keshri, Balmiki Asstt. Manager	43,667	Regular	B.Sc. Engg. (Civil) M.Tech. (Civil) (21 Years)	30.6.84	44	Asstt. Professor, Bihar Public Service Commissioner.
Khan, A.A. Asstt. Manager	42,776	Regular	Diploma in Elect. Engg. (19 Years)	1.1.77	37	J.E. UP. State Planning & Investigation Deptt. Lucknow.
Khan, I.A. Asstt. Manager	50,227	On deputation from PWD, J&K	B.Sc. B.E. (Civil) (24 Years)	15.2.84	47	Executive Engineer (Civil), PWD, J&K
Khanna, M.N. Manager	46,000	Regular	BE (Mech.) (18 Years)	27.3.79	40	AEE, Border Roads Dev. Board
Khanna, P.D. Private Secy.	37,687	Regular	Matric (30 Years)	18.6.77	51	Steno, Central Board of Irrigation & Power
Khanwilkar, P.Y. Dy. Manager	41,767	Regular	BE (Mech.) (12 Years)	15.5.78	35	Lecturer in President Madhav Institute of Sc. & Tech., Gwalior.
Khar, P.N. General Manager.	74,367	Regular	BE (Civil) ME, MIE, MIAHR (31 Years)	15.5.78	51	Supdtg. Engineer, Salal HE Project, Govt. of India.
Khastgir, S. Asstt. Manager	45,580	Regular	BE (Mech.) (6 Years)	8.2.80	32	Graduate App. Alkali & Chem. Corpn. of India.
Khazanchi, R.N. Sr. Manager	45,029	On dupation from PWD, J&K	BE (Civil) (22 Years)	3.9.83	45	Executive Engineer, PWD, J&K.
Khosla, C.P. Manager	52,217	Regular	B.A., PG. Dip. in PM&IR (28 Years)	7.9.79	57	Personnel Officer, NTPC.
Khosla, K.D. Manager	73,853	On deputation from HPSEB	BE (Elect.) (22 Years)	5.7.84	47	SE, HPSEB.
Khungar, J.N. Sr. Manager	66,255	On deputation from Punjab Irrg. Deptt.	B.Sc. Engg. (Civil) (26 Years)	6.8.77	47	Executive Engineer, Beas Project.
Kishore, Bhagat Asstt. Manager	47,021	Regular	AMIE (Mech.) (18 Years)	24.1.79	39	Sr. Draftsman, Western Railways.
Kishore, Kumar Asstt. Manager	46,186	Regular	B.Sc. Engg. (Mech.) (4 Years)	12.4.82	27	—
Kohli, Lalit Asstt. Manager	42,513	Regular	B.Sc., PG Dip. in Business Mgmt. (11 Years)	29.12.81	33	Sales Officer, UP Forest Corporation.
Kochar, J.N. Sr. Manager	68,582	On deputation from Office of DG Border Roads	B.A. (27 Years)	10.8.81	51	Civilian Officer Gr. I, Office of DG Border Roads.
Koul, B.N. Dy. Manager	60,657	Regular	B.A. SAS (37 Years)	2.9.81	56	Accounts Officer, Office of AG, J&K.
Kotwal, S.L. Sr. Manager	57,104	On deputation from PWD, J&K	BE (Civil) (22 Years)	15.5.78	45	Executive Engr. Salal HE Project, Govt. of India.

1	2	3	4	5	6	7
Krishna Mohan Sr. Manager	53,000	Regular	M.A. (Labour & Social Welfare) (23 Years)	4.06.78	49	Dy. Manager (Pers) Bharat Coking Coal Ltd.
Krishnamurthi, M. Sr. Manager	66,382	Regular	BE (Elect.) Sr. Dip. in German, Dip. in Russian (22 Years)	29.06.81	46	Dy. Manager, NTPC
Krishnamurthy, R. Dy. Manager	54,507	Regular	B.Sc., SAS, AICWA ACS (Inter) (17 Years)	1.07.81	42	Sr. Cost Accountant Mineral Exploration Corporation Ltd.
Krishna, D.N. Asstt. Manager	46,365	Regular	ME (Civil) (9 Years)	11.02.80	31	Lecturer, M.S. Ramaiah College of Engg. Bangalore.
Krishnamurthy, M. Asstt. Manager	48,952	Regular	B.Sc. ICWAI (16 Years)	1.07.79	40	Jr. Accountant, Directorate of Accounts (Postal), Hyderabad.
Krishnamurthy, M. Asstt. Manager	39,391	Regular	B.E. (Civil) (7 Years)	3.03.80	31	—
Kumar Arun Asstt. Manager	42,443	On deputation from HPSEB	B.Sc. Engg. (Civil) (14 Years)	21.5.84	36	A.E.E. HPSEB.
Kumar, B. Sr. Manager	55,795	Regular	M.A. (Pol.Sc.) B.L. M.A. (LSW) (21 Years)	12.07.78	48	Personnel Officer, Bokaro Steel Ltd.
Kumar Mithilesh Asstt. Manager	66,339	Regular	B.Sc. Engg. (Elect.) (7 Years)	11.02.80	32	—
Kumar Narinder Asstt. Manager	41,247	Regular	B.E. (Civil) (4 Years)	13.10.82	28	—
Kumar Pankaj Engineer	40,539	Regular	B.Sc. Engg. (Elect.) (6 Years)	15.02.82	28	Junior Engineer, Gammon India Ltd. Bombay
Kumar, S.K. Dy. Manager	55,408	Regular	B.Sc. Engg. (Mech.) (17 Years)	4.08.77	42	Shift Engineer, BSL Project.
Kunjayappan, M.V. Sr. Manager	75,375	Regular	B.Sc. Engg. (Civil) (21 Years)	1.1.77	47	Asstt. Executive Engineer, Loktak HE Project, Govt. of India.
Kunji, NPR Private Secy.	50,831	Regular	SSLC (30 Years)	1.06.79	52	P.A.M./Finance
Lahiri, A.R. Engineer	47,451	Regular	Inter. Dip. (Mines) overman Certificate (20 Years)	13.06.79	44	
Lal, J.G. Dy. Manager	42,395	Regular	B.Sc., MBA, LL.B (10 Years)	20.12.82	34	Asstt. Trg. Officer, P&D India Ltd., Sindri (Bihar).
Lal, R.P. Dy. Manager	48,565	Regular	B.Sc. Engg. (Elect.) (18 Years)	30.11.81	41	A.E.E., UPSEB.
Lalitha, (Mrs.) O.R. Dy. Manager	47,596	Regular	BE (Civil) (15 Years)	2.06.80	39	Asstt. Engineer, CWC.
Lomas, A.K. Manager	52,100	Regular	B.Sc. Engg. (Mech.), M.A. (Pub. Admn.) MIE. (14 Years)	8.06.81	35	Executive Engineer, Western Coal Fields Ltd., Nagpur.
Madan, M.M. Dy. Manager	41,449	Regular	B.Tech. (Civil) (10 Years)	18.05.77	32	Asstt. Engr. M.N. Das & Co., (P) Ltd., Bombay
Madan, R.K. Chief Engineer	68,498	Regular	B.Sc. Engg. (Elect.) (23 Years)	12.12.79	45	Chief Engr. M/s. R.S. Steel Works. Bareilly
Mahajan, Sharat Chander Manager	61,352	On deputation from PSEB	B.E. (Elect) (19 Years)	30.07.84	40	Executive Engr. PSEB
Mahajan, R.K. Dy. Manager	47,604	Regular	Dip. in Civil Engg. (26 Years)	22.09.79	55	SDO, BSL Project.
Mahajan, S.K. Engineer	38,745	On deputation from HPSEB	B.E. (Civil) (6 Years)	6.09.84	29	A.E., HPSEB
Mahalank, S.V. Asstt. Manager	44,934	Regular	M.Sc. (Geology) (7 Years)	11.02.80	31	—
Mahajan, S.K. A.O.	41,185	Regular	B.Sc. SAS (16 Years)	20.01.78	40	Accounts Supervisor, BSP, Govt. of India.
Malhotra, S.P. Dy. Manager	66,210	Regular	B.A. (Hons) (31 Years)	30.04.77	51	P.S., Ministry of Energy
Mal, R.D. A.O.	48,384	Regular	Matric (39 Years)	25.02.77	58	Tech. Asstt., M/O Rlys.

1	2	3	4	5	6	7
Malik, M.A. Engineer	38,821	On deputation from PWD (J&K)	B.E. (Mech) (7 Years)	10.02.84	33	A.E., PWD, Jammu & Kashmir
Manoj Kumar, A.O.	37,270	Regular	M.A., SAS (19 Years)	1.09.79	42	Section Officer, Directorate of Audit Central Revenues
Mandal, R.P. Sr. Manager	66,150	Regular	B.Sc. Engg. (Civil) (25 years)	16.11.79	47	XEN Border Roads Dev. Board.
Mangotra, U.K. Engineer	38,966	On deputation from PDD, J&K	B.E. (Civil) (18 Years)	18.08.80	44	A.E. PDD J&K.
Mandal, T. Manager	52,971	Regular	B.E. (Civil) (15 Years)	29.12.79	37	Junior Prob. Exe. EPI Ltd.
Mandappa, B.M. Addl. G.M.	96,692	Regular	B.E. (Civil Engg.) M.I. Struct. E (London.) FIE (30 Years)	1.10.81	54	Supdt. (Designs) SAIL (Bokaro Steel Plant)
Manchanda, P.C. Dy. Manager	47,019	Regular	Dip. in Engg. (Elect.) AMIE (22 Years)	2.04.79	43	Asstt. Director, Central Board of Irrigation & Power
Maniappan, T.P. Dy. Manager	54,241	Regular	B.Sc. Engg. (Civil) (19 Years)	22.10.81	43	Asstt. Engr. Govt. of Goa, Daman & Diu.
Maniktala, U.K. Asstt. Manager	41,446	Regular	B.E. (Mech) (14 Years)	14.06.82	37	Tech. Asstt., CEA.
Mathur, G.N. Manager	53,221	Regular	AMIE (Elect) (20 Years)	7.04.78	44	Asstt. Engr., RSEB
Mazumdar, A. Manager	54,229	Regular	B.Sc. SRAS (22 Years)	31.08.81	49	Section Officer, Dte. of Audit, Railways.
Mata, I.S. P.O.	53,425	Regular	B.A. SAS PG. Dip in IR&PM	17.03.79	55	Selection Gr. Asstt. AGCR, New Delhi.
Mathur, R.B. Dy. Manager	48,681	Regular	B.E. (Elect.) (14 years)	19.03.79	35	Supervisor, SHEP, Ministry of Energy
Meet, T.N. A.O.	39,382	Regular	M.A. SAS (16 Years)	29.08.79	41	Section Officer, AG Haryana.
Mehta, O.P. Gen. Mgr.	92,754	Regular	B.Sc. Engg. (Civil) (37 Years)	1.01.80	58	CE, Chukha Project Authority, Bhutan.
Mehndiratta, P.R. Asstt. Manager	52,385	On deputation from C.G. of Civil A/c's.	M.A. SAS (32 Years)	31.3.84	56	Accounts Officer, M/O Energy, Deptt. of Power.
Mehra, R.L. Engr.	42,419	On deputation from HPSEB	Dip. in Civil Engg. (16 Years)	7.10.85	40	JE. HPSEB
Mohanty, (Dr.) S.R. M.O.	41,555	Regular	MBBS (11 Years)	29.10.82	34	Private Practitioner
Misra, U.C. Sr. Manager	57,844	Regular	B.E. (Elect) (14 Years)	1.01.78	37	A.E. UPSEB
Mittal, S.K. Asstt. Manager	47,120	Regular	BE (Elect) (5 Years)	1.05.81	27	—
Mittal, A.K. Dy. Manager	44,806	Regular	B.E. (Hons.) (Elect.) (11 Years)	16.05.77	34	Supervisor, Baira Siul HE Project.
Mishra, A.K. Dy. Manager	45,153	Regular	BE (Civil) (8 Years)	20.02.79	31	—
Mishra, R.N. Dy. Manager	52,354	Regular	BE (Hons.) (Civil) (7 Years)	21.06.79	29	—
Mittal, S.K. Chief Engr.,	54,839	Regular	B.E. (Elect) (27 Years)	25.05.78	51	Exe. Engineer, UPSEB.
Mishra, S.B.C. Manager	61,946	Regular	B.E. (Elect.) (14 Years)	4.05.77	40	Asstt. Engr., UPSEB.
Mitra Chinmoy Asstt. Manager	41,667	Regular	B.Sc. Engg. (Elect.) (6 Years)	1.02.80	31	Shift Engineer, Jay Shree Chemicals Ltd.
Mir, T.A. Asstt. Manager	50,604	On deputation from Govt. of J&K	B.E. (Civil) (18 Years)	4.06.84	42	Exe. Engr. PWD, (J&K)
Mintoo, F.A. Engineer	44,074	On deputation from Govt. of J&K	B.E. (Civil) (15 Years)	15.10.81	39	AE, Govt. of J&K.
Mittal, (Dr.) K.K. ACMO	48,330	Regular	MBBS (17 years)	17.02.78	42	Private Practitioner.
Mitra, S. Asstt. Manager	41,457	Regular	B.Tech. (Civil) (5 Years)	1.5.81	30	—
Mishra, M.D. Manager	42,000	Regular	B.A., SAS (30 Years)	30.4.84	51	Sr. A.O. Triveni Structurals Allahabad.

1	2	3	4	5	6	7
Monga, H.P. A.M.	45,564	Regular	B.A. (SAS) (28 Years)	19.08.81	50	Section Officer, AG's Office, H.P.
Mukherjee, K. Chief (F&A)	69,031	Regular	FICWA (30 Years)	25.01.79	51	Asstt. Finance Mgr., FCI (P&D Division) Sindri.
Murti, (Dr.) K.N. SMO	40,897	Regular	MBBS (13 Years)	4.07.81	40	RMO, SBSSTB Sanatorium, U.P.
Murthy, C.L.N. A.O.	53,346	Regular	SAS (29 Years)	1.06.79	52	Section Officer, Southern Railways.
Mukherjee, S.P. O.S.	42,558	Regular	B.A. (26 Years)	1.06.79	43	Steno, Deptt. of Power, Govt. of India.
Mukherjee, S.K. Manager	48,509	Regular	B.A., S.A.S. (24 Years)	20.04.81	56	Accounts Officer, A.G. (U.P.)
Murari Lal SM	74,618	Regular	B.E. (Civil) (24 Years)	22.10.81	46	Executive Engineer, IDPL
Nagaraj, H.R. Chief Engineer	80,343	Regular	AMIE (Civil) (30 Years)	19.09.83	54	Zonal Manager NPCC Ltd.
Nagaja, K.S. Dy. Manager	46,186	Regular	BE (Civil) M. Tech. (Water Resources Engg.) (9 Years)	16.05.77	32	—
Nagpal, S.K. Asstt. Manager	43,087	Regular	BE (Elect.) (13 Years)	25.05.84	36	AE, RSEB
Nagpal, S.S. Asstt. Manager	47,475	On deputation from HPSEB	B.Sc. Engg. (Mech.) (17 Years)	31.05.84	40	AE, HPSEB
Naidu, B.S.K. Sr. Manager	66,448	Regular	BE (Hons.) (Mech.) M. Tech. (Hydro) (17 Years)	28.02.82	41	Manager, BHEL.
Nair, V.P.M. Asstt. Manager	41,753	Regular	B.Sc. Engg. (Elect.) M.Tech (Power Apparatus Sys) (5 Years)	24.07.81	31	Jr. Engineer, Jyoti Ltd., Baroda.
Nambiar, Col., N.P.K. Chief Engineer	77,507	Regular	BE (Civil) MIE (34 Years)	21.07.80	56	Lt. Col. in Army.
Nand Gopal, Sr. Manager	71,045	Regular	BE (Civil), ME (Structures) (20 Years)	3.4.80	45	Dy. Manager, TSP Ltd. Tungabhadra Dam
Nandra, G.S. Asstt. Manager	39,514	On deputation from PSEB	BE (Elect.) (13 Years)	23.04.80	39	Line Supdt. PSEB.
Narang, D.R. Accounts Officer	49,885	Regular	MA, SAS (30 Years)	11.02.77	50	Accountant, Ministry of Railways.
Narang, R.S. Sr. Draftsman	40,047	Regular	B.A. National Trade Cert. Course in Draftsmanship (26 Years)	19.02.77	47	Sr. Draftsman, C.E.A.
Narang, S.M. Manager	62,665	Regular	B.Sc. Engg. (Civil) (20 Years)	14.02.79	43	Asstt. Director, CWC.
Narayanan (Brig) PNS General Manager	1,13,248	Regular	Degree in Engg. (Civil), MIE (34 Years)	30.03.81	55	Chief Engineer, Army Hqrs. New Delhi.
Nath Digvijay Singh Asstt. Manager	55,644	Regular	B.Sc. Engg. (Elect.) (10 years)	4.02.83	35	A.E. UPSEB
Nima, S.K. Dy. Manager	48,581	Regular	BE (Elect.) Dip. in Business Mgt. (15 years)	16. 7.84	42	Asstt. Manager, Food Corporation of India.
Oberoi, B.R. Chairman and Managing Director	1,09,599	Govt. Appointment	MIE (India), Post Graduate (Elect. Engg.) Dip. in Business Management (33 years)	28.02.85	55	CMD, NPCC Ltd.
Ohri, R.K. Private Secretary	46,715	Regular	B.A. (30 years)	28.05.77	47	Steno, Deptt. of Power, Ministry of Energy.
Ojha, R.N. Dy. Manager	57,462	Regular	B.A. (20 years)	13.07.78	43	Welfare Officer, Britannia Engg. Works, Patna.
Omnakuttan, N. Dy. Manager	40,991	Regular	B.Sc. Engg. (Mech.) (10 Years)	20.01.78	40	A.E., Baira Siul Project
Om Prakash Asstt. Manager	37,242	Regular	BE (Civil) (8 years)	1.09.78	30	J.E., HPPWD.
Pahuja, Y.R. Engineer	38,388	Regular	B.Sc. Engg. (Civil) (8 years)	18-05-84	31	A.E. Irrigation Deptt. Haryana.

1	2	3	4	5	6	7
Pandey, (Mrs.) Indu, Librarian	36,555	Regular	B.Sc. B.L.b.Sc. (10 years)	22.04.82	35	Librarian Balco
Pandey, N.N. A.M.	41,506	Regular	B.E. (Civil) (5 years)	15.02.82	29	—
Pandey, S.K. Engineer	36,933	Regular	B.Sc. Engg. (Civil) (4 years)	27.11.84	27	—
Pandey, U.D. A.M.	53,231	Regular	B.A. Dip. in Labour Laws. Lab. Welf. & Pers. Mgt. (28 Years)	6.05.81	47	Office Supdt. Balco
Paras, B.S. P.O.	36,963	Regular	B.A. LL.B. D.P.M. (22 Years)	24.12.76	46	Steno, Ministry of Railways.
Pardasani, N.H. Manager.	67,123	Regular	B.Com. (Hons), AICWA (30 Years)	6.09.78	57	Sr. Accounts Officer, NPCC Ltd.
Parihar, J.S. A.M.	49,152	On deputation from HPSEB	B.Sc. Engg. (Civil) (14 Years)	18.04.84	37	A.E. UPSEB
Parija, Dhiman A.M.	42,631	Regular	B.Sc. Engg. (Mech.) (5 Years)	1.05.81	28	—
Parashar, P.D. O.S.	41,605	Regular	B.A. (31 Years)	12.07.79	54	Selection Gr. Auditor, Dte. of Audit
Prem Chand, A.M.	39,956	Regular	B.Sc. Engg. (Elect) (5 Years)	4.05.81	30	—
Prathi, Raghu A.M.	41,644	Regular	B.Sc. Engg. (Civil) (10 Years)	10.09.82	34	A.E.E., APSEB.
Proch, S.K. D.M.	38,840	On deputation from PWD J&K.	B.E. (Civil) (16 Years)	15.05.78	44	Asstt. Director, Directorate of Design & Planning Jammu.
Puri, P.C. A.M.	42,617	Regular	B.Sc. Engg. (Elect) (11 Years)	20.1.78	39	A.E. Baira Siul Project
Purohit, D.C. Sr. Manager	63,481	Regular	M.E. (Elect) (17 Years)	18.02.83	38	Project Engineer, E.P.I. New Delhi.
Parkash, Ram Engineer	41,460	Regular	B.Tech. (Civil) (3 Years)	17.1.83	25	—
Pathania, K.S. Dy. Manager	38,418	On deputation from PWD J&K.,	B.E. (Mech) (19 Years)	5.01.78	43	Executive Engineer, PWD J&K Govt.
Paul, S.N. D.M.	44,760	Regular	B.A. (27 Years)	23.09.80	57	A.O. A.G. Office, Rajasthan.
Plah, J.K. F.O.	46,508	On deputation from Forest Deptt. HP	B.A. Forest Rangers course (25 Years)	1.09.84	50	Sub-divisional Mgr., HP State Forest Corporation Ltd.
Prabhakar, M.N. A.O.	38,409	Regular	B.A., SAS (26 Years)	1.12.78	45	Section Officer, AG, J&K.
Prabhakar, R.D. Manager.	57,376	Regular	M.Sc., Engg. (Elect.) (16 Years)	31.03.79	39	Asstt. Executive Engineer, P.S.E.B.
Prabhakar, Chand, A.M.	43,271	Regular	B.Com. SAS (21 Years)	12.07.79	40	Sr. Acett. A.G. J&K.
Prahlad, C.D. Asstt. Manager	47,911	Regular	B.E. (Elect.) (10 Years)	Jan'87	37	Supervisor, C.E.A.
Pran Nath, SPS.	50,246	Regular	B.A. Dip in Pers. Mgnt. & I.R. (31 Years)	19.02.77	53	P.S., Railway Board.
Prakash Nayar, Dy. Manager	38,007	Regular	B.Sc. Engg. (Elect.) (10 Years)	22.5.79	38	Elect. Supr., Baira Siul Project.
Prakash Shri, Asstt. Manager	37,637	Regular	B.E. (Civil) (4 Years)	11.10.82	28	—
Prakash, Satya Asstt. Manager	46,485	Regular	B.E. (Civil) (12 Years)	9.07.81	35	Asstt. Manager, F.C.I.
Prashad, A. Hari A.M.	52,226	On deputation from UPSEB	B.Sc. Engg. (Civil) (15 Years)	21.05.84	40	Asstt. Executive Engineer, HPSEB
Prasad, Anil A.M.	40,327	Regular	B.Tech. (Civil) (7 Years)	3.03.80	28	—
Prasada Rao, P.D. Chief Engr.	96,162	Regular	B.E. (Civil) (23 Years)	23.06.80	47	Dy. Director, CWC.
Prasad, G.M. A.M.	49,473	Regular	B.Sc. Engg. (13 Years)	7.09.79	35	Asstt. Engineer, B.S.E.B.

1	2	3	4	5	6	7
Prasad, V.B. Sr. Manager.	68,132	Regular	B.Sc. B., Tech. (Elect.) (21 Years)	11.04.81	43	Executive Engineer. UPSEB
Rai, N.K. Engineer	44,648	Regular	B.Sc. Engg. (Mech) (6 Years)	24.08.84	34	Officer Incharge Workshop, Defence Services.
Raja, K.V. Accounts Officer	36,350	Regular	B.Sc. (14 Years)	17.01.83	39	Section Officer, A.G. (Bihar)
Rajkumar Dy. Manager	48,167	Regular	B.E. (Elect) (10 Years)	4.3.83	32	A.E., UPSEB
Rajpal, P.R. Asstt. Manager	40,145	Regular	B.E. (Civil) (11 Years)	20.01.78	37	A.E., Baira Siul Project
Rajinder Singh Asstt. Manager	39,303	Regular	B.E. (Elect) (8 Years)	28.04.78	37	—
Raina, Y.K. Manager	52,136	Regular	B.E. (Civil) (25 Years)	31.12.79	48	Exe. Engr., PWD, J&K.
Raman, N.V. Co. Secy. & Chlrel (Law)	73,544	Regular	B.A., LL.B., GDCS, ACS, ICWA (Inter), Dip. in Labour Laws (30 Years)	15.12.78	49	Dy. Company Secretary, Engineers India Ltd.
Ramanan, S. Asstt. Manager	43,756	Regular	BE (Civil) (12 Years)	27.06.84	37	Engineer, KPC, Ltd.,
Raina, A.H. General Manager	82,806	Regular	BE (Elect.) (26 Years)	15.05.78	56	Supdtg. Engineer, Salal HE Project, Govt. of India.
Raina, K.B. Dy. Manager	42,141	Regular	MSW (20 Years)	15.05.78	46	Labour Officer, Salal HE Project Govt. of India.
Raina, M.K. Dy. Manager	44,498	Regular	BE (Elect.) (11 Years)	20.01.78	35	Asstt. Engineer Baira Siul Project, Govt. of India.
Rao, G.L.N. Asstt. Manager	86,558	Regular	SAS (32 Years)	26.05.80	50	Section Officer, Office of CAG of India.
Rao, M.V. Sr. Accountant	39,577	Regular	B.A., SAS (22 Years)	11.09.79	46	Auditor, AG(AP).
Rao, P.L. Sr. Manager	69,359	Regular	AMIE (27 Years)	12.03.81	48	Divisional Engr. Rehabilitation Reclamation Organisation, Deptt. of Rehabilitation, Govt. of India.
Robertson, J.H. Manager	60,914	Regular	BE (Mech.) (17 Years)	11.10.78	41	AEE, Tamil Nadu Electricity Board.
Rohtagi, A.K. Asstt. Manager	45,112	Regular	BE (Elect.) (5 Years)	22.05.79	28	
Ramam, T.V. Dy. Manager	42,873	Regular	BE (Civil) (15 Years)	26.03.80	38	Extra Asstt. Director, CWC.
Ramamurthy, A.R. Sr. Manager	58,773	Regular	B.A., AICWA, ACS (33 Years)	11.08.78	50	Sr. Asstt. Manager, FCI
Ram Murti, Office Supdt.	45,649	Regular	Matric (30 Years)	8.05.79	50	UDC Ministry of Steel & Mines.
Rama Rao, K. Manager	52,702	Regular	BE (Civil) (15 Years)	13.3.80	41	Extra Asstt. Director, CWC.
Ramanjaneyulu, A. Accounts Officer	49,280	Regular	B.Com, SAS (19 Years)	1.01.77	43	Accounts Supdt. Loktak Project, Govt. of India
Ramesh Chandra Manager	45,000	Regular	B.Sc. Engineering (Civil) (15 Years)	16.10.78	38	Asstt. Engineer, U.P. Irrigation Deptt.
Ratish Kumar Asstt. Manager	38,546	Regular	B.Tech. (Elect.) (4 Years)	14.10.82	26	—
Rastogi, V.P. Sr. Manager	52,000	Regular	AMIE, Dip. in Ind. Admn. (29 Years)	9.06.81	47	Sy. Sales Manager, Triveni Structurals Ltd.
Ravi, D. Asstt. Manager	42,882	Regular	BE (Elect.) (6 Years)	1.05.81	28	Service Engineer, Power Centre (P) Ltd. Madras.
Ray, A.K. Dy. Manager	38,940	Regular	B.Sc. Engg. (Elect.) (16 Years)	13.02.76	39	J.E., PWD Tripura.
Roy, S.R. Asstt. Manager	45,762	Regular	BE (Civil) (6 Years)	6.05.81	28	Asstt. Engineer, Design Engg. Consultants, New Delhi.
Roy, S. Dy. Manager	46,919	Regular	B.E. (Civil) (10 Years)	27.09.82	36	—
Roy Chaudhury, S.N. Asstt. Manager	47,886	Regular	BE (Mech.) (13 Years)	1.01.77	41	Supervisor, Loktak HE Projct, Govt. of India.

1	2	3	4	5	6	7
Ravinder Kumar Asstt. Manager	50,206	Regular	B.Sc. Engg. (Civil) (9 Years)	30.12.81	31	Asstt. Director, Indian Standards Institution.
Rawat, G.S. Dy. Manager	52,411	Regular	B.Sc. Engg. (Civil) (10 Years)	19.03.79	32	Engineer, M/s. Mohinder Singh & Sons.
Rawat, M.S. Personnel Officer	47,489	Regular	M.A. Dip. in PM & IR (28 Years)	18.03.79	52	Selection Grade Auditor, A.G.C.R.
Sachdeva A.K. Manager	63,407	Regular	BE (Mech.) (17 Years)	21.12.78	39	AE, National Fertilisers Ltd., Bhatinda.
Sachdeva, H.S. Manager	58,059	Regular	BA (36 Years)	19.9.79	55	P.S. to Minister of State for Energy.
Sachdeva, S.K. Sr. Draftsman	42,080	Regular	Dip. in Draftsmanship (Mech) (23 Years)	19.2.77	44	Sr. Draftsman, CEA.
Saha, K.D. Asstt. Manager	40,542	Regular	M.A. (Lab. & S.W.) (12 Years)	6.4.85	33	Labour Office M/o Labour
Saha, Sandeep Dy. Manager	48,322	Regular	BE (Civil) (17 Years)	8.10.82	41	Executive Engineer, CWC
Sahoo, Dr. S. Sr. Medical Officer	53,525	Regular	MBBS (12 Years)	6.2.78	40	Asstt. Surgeon Gr.I Health Service, Govt. of Manipur.
Saini, J.S. Dy. Manager	44,126	Regular	B.Sc. Engg. (Elect.) (19 Years)	7.8.77	43	AE, Beas Construction Board.
Salhotra, N.P. Asstt. Manager	44,753	Regular	BE. (Mech.) (11 Years)	20.1.78	37	AE, Baira Siul HE Project, Govt. of India.
Samant, J.S. Dy. Manager	42,372	Regular	B. Tech. (7 Years)	22.5.79	32	—
Sandeep Kumar Engineer	41,195	On deputation from HPSEB	dip. in Civil Engg. (20 Years)	14.11.85	45	JE, HPSEB
Sapra, I.J.L. Asstt. Manager	49,148	Regular	B.A (28 Years)	23.5.79	52	Supdt. Beas Construction Board.
Saraf, B.R. Asstt. Manager	47,716	Regular	BE (Civil) (7 Years)	10.9.79	29	
Sarbhoj, O.P. Director (Personnel)	94,309	Govt. Appointment	B.Sc., M.A. (Eco.) LL.B., M.A. (Soc. Work. with Spln. in Pers. Mgt.) (32 Years)	5.8.85	56	Dy. General Manager, BHEL
Sarkar, A.K. Asstt. Manager	39,377	Regular	BME (Mech.) (7 Years)	1.2.80	30	
Sarwal, Deepak Asstt. Mgr.	36,893	Regular	B. Tech. (Civil) (8 Years)	30.5.81	31	A.E., Tata Consultancy Engineers, Bombay.
Satyanarain, V. Asst. Mgr.	45,751	Regular	M. Tech (Civil) (4 years)	16.10.82	29	Koneru Lakshmaiah College of Engg., Vijayawada
Saxena, J.C. Asstt. Manager	51,639	Regular	M.A., LL.M (31 Years)	7.12.78	52	Selection Grade Auditor, A.G.C.R.
Saxena, Rakesh Dy. Manager	48,481	Regular	B.Sc. Engg. (Civil) (13 Years)	23.11.82	35	Engineer (Civil) EC Ltd. Burdwan (W.B.)
Saxena, R.K. Asstt. Manager	38,702	Regular	BA., LL.B. (21 Years)	19.11.79	42	Law Asstt., UPSEB
Saxena, Y.C. Sr. Accountant	39,528	Regular	M.A., SAS (21 Years)	21.4.81	45	Section Officer, Office of AG, M.P.
Seetharaman, N. Dy. Co. Secy.	49,011	Regular	B.A., LL.B. ACS. (28 Years)	26.11.79	48	SPA, Planning Commission.
Sehgal, H.K. Engineer	43,370	Regular	Dip. in Mech.Engg. (15 Years)	20.1.78	40	Supervisor, Baira Siul Project Govt. of India
Sehgal, Inderjeet Engineer	42,455	On deputation from HPSEB	Dip. in Civil Engg. (21 Years)	30.9.85	46	A.E., HPSEB.
Sehgal, R.P. Dy. Manager	54,779	Regular	B.Sc. Engg. (Elect.) (15 Years)	25.11.81	45	Shift Engineer, Beas Project, Talwara
Sehgal, S.C. Manager	62,859	Regular	B.Sc. Engg. (Civil) (16 Years)	7.11.80	39	Asstt. Engineer, Chukha Hydel Project.
Sehgal, V.P., D.M.	43,617	Regular	B.E. (Elect.) (18 Years)	12.1.78	40	Shift Engineer, BSL Project
Sen, S.C. Gen. Manager	1,05,394	Lien-holder from ASEB	B.E. (Civil) FIE (31 Years)	31.8.84	52	C.E., ASEB

1	2	3	4	5	6	7
Sen, S.P. Dy. Manager	58,072	Regular	M.E. (Civil) (14 Years)	11.8.80	38	Asstt. Engineer, I&W Dep'tt. W.B.
Settiwan Narhar, S.M. Asstt. Mgr.,	38,107	Regular	B.E. (Mech.) (4 Years)	13.10.82	25	—
Shaha, K.D. A.M.	36,250	Regular	B.Sc. Engg. (Civil) (6 Years)	14.10.82	29	Site Engr. Tribildall (P) Ltd., Calcutta
Sharda, B.K. A.M.	37,966	Regular	B.E. (Civil) (7 Years)	10.6.80	29	Tech. Asstt., P.H.E.D., Rajasthan
Sharma, B.K. S.M.	67,725	Regular	B.Tech. (Civil) M.Tech (Soil Mechanics & Foundation Engg.) Diploma in Civil Engg. (15 years)	18.7.81	46	Research Eng. Institute of Rock Mechanics, Univ. of Karlsruhe (W. Germany)
Sharma, Dilaram Engineer	43,563	On deputation from HPSEB	B.Sc. Engg. (Elect)	7.10.85	40	A.E. HPSEB.
Sharma, B.R. D.M	49,810	Regular	Dip. in Mech. (Engg) (21 Years)	2.8.77	42	Section Officer, Beas Construction Board
Sharma, G.L. Engineer.	38,838	Regular	B.Tech. (Civil) (7 Years)	28.3.77	41	—
Sharma, G.S. Asstt. Manager	44,474	Regular	B.Sc.Engg. (Civil) (10 Years)	1.2.80	30	—
Sharma, H.K. A.M.	41,039	Regular	B.E. (Civil) (7 Years)	30.5.84	32	A.E. Haryana Irrigation Deptt.
Sharma, J.K. Dy. Manager	41,422	Regular	M.A. S.A.S. (34 Years)	28.3.79	28	—
Sharma, K.B. A.O.	36,283	Regular	B.E. (Civil) (19 Years)	7.10.77	54	Section, Officer, A.G.C.R.
Sharma, K.D. Dy. Manager	40,193	On deputation from Irrigation Deptt. J&K	B.E. (Mech.) (14 Years)	20.5.78	48	Executive Engineer J&K
Sharma, K.D. Asstt. Manager	42,664	On deputation from HPSEB	Dip. in Mech. Engg (20 Years)	2.6.84	36	A.E.E. HPSEB
Sharma, K.D. Engineer.	39,686do.....	B.Sc. Engg. Hons (Civil) (20 Years)	5.10.85	43	A.E. HPSEB
Sharma, K.S. Manager	47,000	On deputation from PWD, Punjab	BE (Civil) Dip. in Business Mgt., (12 Years)	23.5.77	38	SDO, PWD, Punjab
Sharma, M.D. Dy. Manager	55,133	Regular	B.Sc. Engg. (Civil) (7 Years)	20.10.82	37	AD (Extra) CWC
Sharma, M.T. Asstt. Manager	37,100	Regular	B.Sc. Engg. (Civil) (25 Years)	14.4.80	31	Junior Site Engineer M/s Gammon India Ltd.
Sharma, O.P. Chief Engineer	82,895	Regular	AMIE, Dip. in Elect, Engg. (23 Years)	15.5.78	49	Executive Engineer, Salal HE Project
Sharma, P.D. SM	1,10,646	Regular	Dip. in Draftsmanship (22 Years)	29.8.77	43	AE., UPSEB
Sharma, P.K. Sr. Draftsman	36,611	Regular	B.A., SAS PG, Dip. in PM & IR (20 Years)	1.10.79	44	Draftsman, CWC
Sharma, P.N. Sr. Acctt.	40,223	On deputation from AG, HP, shimla	Dip. in Civil Engg.	28.6.81	43	Auditor, A.G. HP
Sharma, R.K. Engineer.	38,159	On deputation from H.P. PWD	BE (Elect.) PG. Dip. in Elect. Engg. Dip. in Marketing Mgt. (18 Years)	29.4.74	47	—
Sharma, R.K. Sr. Manager	65,709	Regular	BE (Civil) (6 Years)	31.8.78	40	AE, Beas Project, Chandigarh.
Sharma, R.R. Deputy Manager	47,508	Regular	B.E. (Elect.) (11 Years)	22.5.79	31	—
Sharma, S.C. D.M.	40,587	Regular	B.Sc. Engg (Mech.) (14 Years)	13.9.78	32	Junior Engineer HPSEB
Sharma, T.R. Asstt. Manager	40,667	Regular	M.A. (Psych.) Dip. in Medical Psych. D.P.M, Ph.D. (13 years)	7.2.77	37	Engineer Beas Dam Project
Sharma, Dr. Umesh Personnel Officer	45,820	Regular		25.1.84	38	Psychologist, BHEL

1	2	3	4	5	6	7
Sharma, V.B. Dy. Manager	44,448	Regular	B.Sc. (Engg.) (Civil) (17 Years)	23.9.81	43	Service Engineer HCC Ltd.,
Sharma, V.K. Dy. Manager	44,070	On deputation from HP, PWD	BE (Civil) (18 Years)	21.6.80	41	A.E., HP, PWD
Sharma, V.N. A.O.	45,480	Regular	B.A., SAS (23 Years)	24.10.77	43	Supdt. (F&A) CHEPCB
Sharma, Y.K. Dy. Manager	56,939	Regular	B.Tech. (18 Years)	8.12.80	41	Asstt. Supervisor U.P. State Agro, Ind. Corporation Ltd.
Sheikh, G.H. A.O.	41,909	On dep. from Fin. Dept. J&K.	Matric (31 Years)	2.5.84	51	Dt. Treasury Officer, J&K
Shenvi, N.R. Manager	54,003	Regular	B.E. (Civil) (16 Years)	9.10.78	40	Engineer, Mysore Power Corporation Ltd. Bangalore
Shiv Kumar, Dy. Manager	37,410	Regular	B.Sc. Engg. (Civil) (10 Years)	20.1.78	34	Design Asstt. Baira Siul Project.
Singh, Balbir, P.S.	38,179	Regular	Matric (22 Years)	15.7.78	41	Steno, CHECB
Singh, B.R. Dy. Manager	49,810	Regular	B.Sc. (Engg) (Elect)	2.8.77	42	Sectional Officer, Beas Construction Road
Singh, Harbans Manager	48,233	Regular	B.Sc. Engg. (Civil) MIE, MIQS., (20 Years)	20.1.79	43	A.E., Chukha H.E. Project, Bhutan.
Singh, Jamadar, O.S.	44,118	Regular	M.A. (35 Years)	24.7.79	57	Selection Grade Auditor, DTE. of Audit
Singh, J.P. D.M.	51,664	Regular	B.Sc. Engg. (Civil) (9 years)	19.12.77	33	—
Singh, Joginder D.M.	47,524	Regular	B.E. (Elect.) (15 years)	29.10.81	42	Asstt. Director C.E.A.
Singh, K.P. Manager	48,809	Regular	B.E. (Elect.) (15 Years)	11.3.80	39	Asstt. Director, C.E.A.
Singh, L.P. Asstt. Manager	43,505	Regular	B.E. (Mech.) (8 Years)	26.10.78	35	—
Singh, Narinder Sr. Supervisor	41,030	Regular	Matric, Dip. in Automobiles (38 Years)	11.11.80	55	Hon. Captain in the Army.
Singh, Kanwal, A.M.	49,822	Regular	B.Sc. Engg. (Mech.) (4 Years)	21.4.82	31	—
Singh, K.M. Dy. Manager	39,873	Regular	B.E. (Elect) (7 Years)	22.5.79	29	—
Singh, Kr. Pritpal Chief Engineer	81,420	Regular	B.E. (Civil) AMIE (30 Years)	1.12.77	53	S.E. PWD (J&K)
Singh, M.P. Engineer	46,057	Regular	AMIE (17 Years)	8.3.78	35	J.E. Govt. of Punjab
Singh, Nain A.M.	49,101	Regular	B.E. (Elect.) (6 Years)	2.5.80	32	—
Singh, Parminder Dy. Manager	42,638	Regular	B.E. (Civil) (18 Years)	15.5.78	41	A.E. Salal H.E. Project. Govt. of India.
Singh, R.C. Engineer	48,623	On deputation from HPSEB.	B.E. (Civil) (15 Years)	14.9.84	38	—
Singh, Maj. R.D.P. S.M.	73,009	Regular	B.Sc. Engg. (Civil) (20 Years)	21.3.79	43	Major in Indian Army.
Singh, R.K. A.M.	43,756	Regular	B.E. (Elect) (5 Years)	1.5.81	27	—
Singh, R.P. A.M.	46,451	Regular	B.A. (Hons) M.A., LLB. (15 Years)	12.2.85	40	Labour Welfare Officer, Andaman Timber Industries, Andaman.
Singhal, R.S. A.O.	38,019	Regular	B.Com., SAS (19 Years)	22.11.78	43	Section Officer, Directorate of Central Revenues.
Singla, B.N. AM	60294	On deputation from HPSEB	BE (Civil) (15 Years)	11.12.85	38	—
Sinha, Alok AM	43488	Regular	B.Tech. (Mech.) (11 Years)	10.7.81	32	Project Engineer, Kinetics Tech.

1	2	3	4	5	6	7
Sinha, A.S.C. Sr. Manager	68,809	Regular	B.Sc. (Prodn. Engg.) M.S. (Mech. Engg.) MBA (18 Years)	30.6.81	39	Sr. Plg. Engineer BHEL
Sinha, B.K. DM	47,778	Regular	BA (Hons.) SRAS (33 Years)	16.12.81	55	Accounts Officer NE Railway
Sinha, B.S.P. Chief	88,455	Regular	B.A. MIMM (U.K.) (24 Years)	3.6.81	47	Manager, BHEL
Sinha, N.K. AO	39,154	Regular	SAS (6 Years)	16.11.80	30	—
Sonowal, H. SMO	43,353	Regular	MBBS (8 Years)	8.8.81	33	Private Practitioner
Sood, A.K. DM	46,202	Regular	M.Tech. (Geo.) (13 Years)	2.11.82	40	Geologist, GSI
Sood, B.D. Engineer	43,314	On deputation from HPSEB	Dip. in Civil Engg. (18 Years)	7.10.85	40	A.E., HPSEB
Sood, K.K. AM	42,398	Regular	B.Sc. Engg. (Civil) (10 Years)	1.1.77	33	Supervisor, Loktak HE Project.
Sood, V.K. Engineer	36,426	On deputation from HPSEB	Dip. in Civil Engg. (18 Years)	2.5.86	41	A.E. HPSEB
Subhash, Chander AM	36,468	Regular	B. Tech (Elec) (4 years)	16.10.82	26	—
Subramani, C.G. Chief Engr.	81,405	Regular	BE (Civil) MIE (26 Years)	3.10.79	49	Executive Engineer, Border Roads Deptt.
Subramaniam, PVS AO	37,132	Regular	B.Com.SAS (20 Years)	01.1.77	40	Accounts Supdt. CHE PCB
Subramanian, N.R.K. Sr. Acctt.	53,127	Regular	B.Sc. CA (Inter) (8 Years)	22.2.80	32	—
Suhag, U.S. AM	42,143	Regular	B.Sc. Engg. (Mech.) (5 Years)	1.5.81	29	—
Suresh Kumar Engr.	36,277	Regular	B.Tech. (Elect.) (4 Years)	14.12.84	28	—
Suri, B.L. Sr. Manager	52,489	On Deputation from PDD, J&K	B.Sc. Engg. (Elect) PG Dip. in Business Management (27 Years)	11.7.82	51	SE (Electrical) PDD, J&K
Surinder Mohan Engineer	42,523	On deputation from HPSEB	Dip. in Mech. Engg. (21 Years)	27.9.85	46	AE HPSEB
Swapan, Deb AM	38,780	Regular	B.Sc. Engg. Hons (Civil) (5 Years)	20.2.82	28	—
Tahilyani, T.C.A. Manager	48,000	Regular	M.Sc. Engg. (Elect.) (15 Years)	4.5.78	41	Asstt. Engr, UPSED.
Tandan, R.K. Dy. Manager	47,650	Regular	B.Sc. Engg. (Elect.) (15 Years)	6.8.77	41	Supervisor, CEA.
Taneja, S.K. Manager	77,906	On deputation from Govt. of Punjab.	BE (Civil) (25 Years)	13.8.82	50	SDE Irrigation and Power Deptt. Govt. of Punjab
Tather, G.C. Asstt. Manager	48,505	Regular	BE (Elect.) (14 Years)	29.6.84	35	AE, RSEB
Thakur, O.P. Asstt. Manager	43,567	Regular	B.Sc. Engg. (Civil) (8 Years)	1.9.78	30	—
Thakkar, P.J. Asstt. Manager	39,195	Regular	B.E. (Elect) (7 Years)	13.2.80	31	J.E., Gujarat State Electricity Board
Tharaja, R.L. Sr. Draftsman	38,554	Regular	Dip. in Draftsmanship (17 Years)	16.6.78	40	Junior Draftsman, CWC
Tikoo, V.K. Engineer.	36,786	Regular	Dip. in Elect. Engr. (10 Years)	8.3.78	32	Supervisor, C.E.A.
Tirkey, E. Asstt. Manager	42,712	Regular	M.A. PGDC (7 Years)	11.3.83	36	Labour Welfare Officer, B.S.E.B.
Tondan, S.K. Asstt. Manager	39,098	On deputation from Punjab.	AMIE (Mech.) (19 Years)	1.3.86	34	SDO, Punjab
Trehan, P.S., Dy. Mgr.	46,001	On deputation from Govt. of Punjab	AMIE (Mech.) (19 years)	6.10.80	42	Irrigation Deptt. SDO Punjab tranjation Deptt.
Trikha A.K. Asstt. Manager	37,368	Regular	B.E. (Civil) (10 Years)	15.5.78	33	Design Asstt., Salal H.E. Project.

1	2	3	4	5	6	7
Tripathi, S.D. Dy. Manager	44,545	Regular	AMIE (Elect.) (21 Years)	22.10.81	39	AE, RSEB
Tuteja, H.K. Asstt. Manager	40,947	Regular	B.E. (Hons.) (Civil) (4 Years)	11.10.82	26	—
Tyagi, G.D. Chief Engineer	80,088	On deputation from U.P. Irr. Deptt.	BE (Civil) (31 Years)	10.2.78	54	Executive Engineer, Irrigation Deptt. U.P.
Tyagi, Virender Asstt. Manager	39,426	Regular	B.E. (Elect.) (11 Years)	3.6.82	34	ELC, General Manager (P) Baroda House, New Delhi.
Ulaganathan, D. Manager	54,000	Regular	BE (Elect.) (14 Years)	16.6.77	37	A.E. Tamil Nadu Electricity Board.
Upendra Rao Asstt. Manager	37,423	Regular	B.Sc., PG Dip. in Social Service with specialisation in PM & IR (12 Years)	16.12.81	35	P.O. Reforms & Rehabilitation (P) Ltd., Dhanbad
Varatharajan, R. Sr. Manager	59,353	Regular	M.A. (English) M.A. (Economics) SAS (32 years)	13.11.78	57	Revenue Audit Officer, AGCR
Vaswani, Savitri Programmer	42,608	Regular	M.Sc. (Maths) (4 Years)	28.12.84	25	Research Associate Research & Inf. System
Venkatesh, C.R. SM	61,979	Regular	B.E. (Civil) ME (Structures) (11 Years)	29.10.81	42	Scientist. Cement Research Institute of India
Velardhan, R Engineer	36,070	Regular	Dip. in Elect. Engg. (20 Years)	27.8.77	44	Sectional Officer, GREF
Veerabhadraiah. S. Asstt. Mgr.	49,530	Regular	M.A. (Pub. Admn. with Labour Welfare) MA (Eco Stat) LLB, PG Dip. in Pers. Mgt. & IR (30 Years)	18.6.80	50	Supdt. NSSO, Deptt. of Statistics, Govt. of India
Venkatachalam, K.R. S.P.S.	45,512	Regular	SSLC (30 Years)	1.8.78	53	SPA to Secy., Deptt. of Power
Verma, B.R. Engg.	42,544	on deputation from HPSEB	Dip. in Mech. Engg. (16 Years)	28.9.85	40	AE, HPSEB
Verma, Chetan PO	38,147	Regular	B.A. (Hons.) D.P.M. (10 Years)	20.1.83	28	P.O., Vidya Engg. Works, Patna
Verma, V.K. AM	53,483	Regular	B.E. (Civil) (5 Years)	1.2.80	31	—
Verma, U.K. AM	86,775	Regular	BSC Engg. (Elect). (5 Years)	1.5.81	28	—
Verma, D., Paul SM	57,000	Regular	B.Sc. Engg. (Civil) (20 Years)	9.8.76	45	SDO, Punjab PWD (Irrigation)
Vinod Kumar Manager	46,401	Regular	B E (Mech) (14 Years)	29.2.80	37	Sr. Engineer (Mech.) Salal H.E. Project
Viswanathan, N. Chief Engineer	74,261	Regular	ME (Civil) (23 Years)	17.9.79	47	Asstt. Chief Engineer Triveni Structurals Ltd.
Viswanath, T.A.B. DM	52,159	Regular	BE (Civil) PG Dip. in Proj. Mngt. (19 Years)	1.12.80	40	AEE Border Roads Organisation.
Vyas, R.K. Engineer	36,136	On deputation from HPSEB	Dip. in Civil Engg. (18 Years)	7.10.85	41	AE, HPSEB
Wadhwa, I.D. OS	41,897	Regular	Matric (35 Years)	7.7.79	52	Selection Grade Auditor, Dte. of Audit, CW&M
Wali, T.K. AM	43,066	Regular	BE (Elect.) (9 Years)	30.5.81	36	Sales Engineer M/s Batliboi & Co.
Wazir, S.L. DM	40,449	On deputation from Irrigation PDD, J&K	B.Sc. BE (Civil) (19 Years)	4.5.74	47	Asstt. Engr. Irrigation Deptt. J&K
Yaduvendra, R.K. Sr. Mgr.	71,545	Regular	M.Sc. (Mech. Engg.) MBA (21 Years)	1.1.82	45	Dy. Dir. Dev. Commissioner (SSSI) Ministry of Industry, Govt. of India

1	2	3	4	5	6	7
Zutshi, K.L. Chief Engineer	75,265	Regular	B.E. (Civil) M. Tech. (25 Years)	15.5.78	49	Executive Engineer, Salal Project
Zutshi Muni (Dr.) LMO	59,222	Regular	MBBS (12 Years)	8.1.81	38	Asstt. Surgeon, Health & Family Plg. Department, Govt. of J&K
(3) PARTICULARS OF EMPLOYEES FOR PART OF THE FINANCIAL YEAR WHO WERE IN RECEIPT OF REMUNERATION NOT LESS THAN Rs. 3,000/-PM.						
Atul Kumar AM	22,183	Regular	B.E. (Civil) (5 Years)	1.5.81	28	—
Bakshi, D.C. Engineer	14,062	Regular	Dip. in Automobile Engg. (10 Years)	23.8.76	33	—
Chauhan, I.C. L.A.O.	44,645	On deputation from PWD (HP)	B.A. (10 Years)	23.4.82	53	G.A. to SDM, Chamba
Dayaseelan, D.D. Manager	12,086	Regular	B.Com. CA (11 Years)	19.11.86	38	Sr./As Officer, Modern Food Industries
Gandhi, J.C. AM	36,573	On deputation from HPSEB	Dip. in Elec. Engg. Graduate in Elect. Engg. (24 Years)	19.6.86	47	Dy. Project Engineer, REC, New Delhi
Gupta, M.L. AM	31,056	On deputation from HPSEB	BE (Elect) (12 Years)	11.6.86	40	—
Garg, K.K. AM	9,982	Regular	B.Com CA (6 Years)	11.11.86	30	—
Jain, B.R. AM	25,828	Regular	AMIE (Mech.) (20 Years)	31.1.77	41	Sectional Officer, Baira Siul Project
Labh Singh Manager	42,977	On deputation from HPSEB	B.Sc.Engg. (Civil) (22 Years)	17.6.86	44	E.E. HPSEB
Logunathan Engineer	19,999	Regular	Dip. in Mech. Engg. (11 Years)	1.1.77	36	Supervisor, Loktak H.E. Project
Mahesh Chandra Chief Engineer	46,643	On deputation from Irrigation Deptt. U.P.	BE (Civil) ME (WRD) (32 Years)	15.3.86	54	Officiating CE., Irrigation Deptt. U.P.
Mishra, R.P. AM	37,839	Regular	B.Com., ICWA (Inter) (23 Years)	9.5.78	45	AAO, U.P.S. E.B
Nagabushan, K.M. Chief Engr.	34,804	Regular	B.E. (Civil) ME (Water Resources Development) (27 Years)	31.3.80	52	S.E. Chukha Hydel Project
Ramtani, I.L. SM	25,499	Regular	B.A. LL.B., PG Dip. in Labour Laws, Labour Welfare & Pers. Management (27 Years)	2.11.81	45	Sr. Admn. Officer (Pers.) Hindustan Zinc Ltd.
Rao, E.B.K. AM	21,690	Regular	B.Sc. (Hons)CA, (4 Years)	20.10.86	28	—
Rajagopalan, R. Director (Finance)	69,218	Govt. Apptt.	B.Sc. B.L. (31 Years)	19.11.78	58	Accountant-General, J&K
Sharma, B.K. Dass Manager	14,188	On deputation from HPSEB	BE (Mech.) (21 Years)	4.4.84	45	SE, HPSEB
Sharma, D.K. AM	16,615	Regular	B.A., D.P.M. (20 Years)	1.2.78	49	P.S. BHEL.
Sobti, J.C. AO	59,743	Regular	BA, SAS (25 Years)	1.12.82	45	—
Walvaker, A. AM	9,713	Regular	MSC (Geo) (7 Years)	1.2.80	31	Senior Reserch Fellow, IIT, Bombay.

- NOTES :**
- (1) None of the above employees is related to any of the Directors of the Corporation within the meaning of Section 6 of the Companies Act, 1956
 - (2) The terms and conditions of appointment are as determined by Government/Rules and Regulations of the Corporation in force from time to time, as the case may be.
 - (3) Designations indicated in the list denote the nature of duties performed by employees.
 - (4) (a) The 'Remuneration' includes cost of hiring corporation-leased accommodation, wherever applicable, employer's contribution to PF etc.
(b) The Gratuity amount has not been taken into account as the same has been provided on the basis of Gratuity-cum-LIC Policy taken with Life Insurance Corporation of India.
 - (c) In the case of employees posted abroad, the remuneration includes Foreign Allowance also.