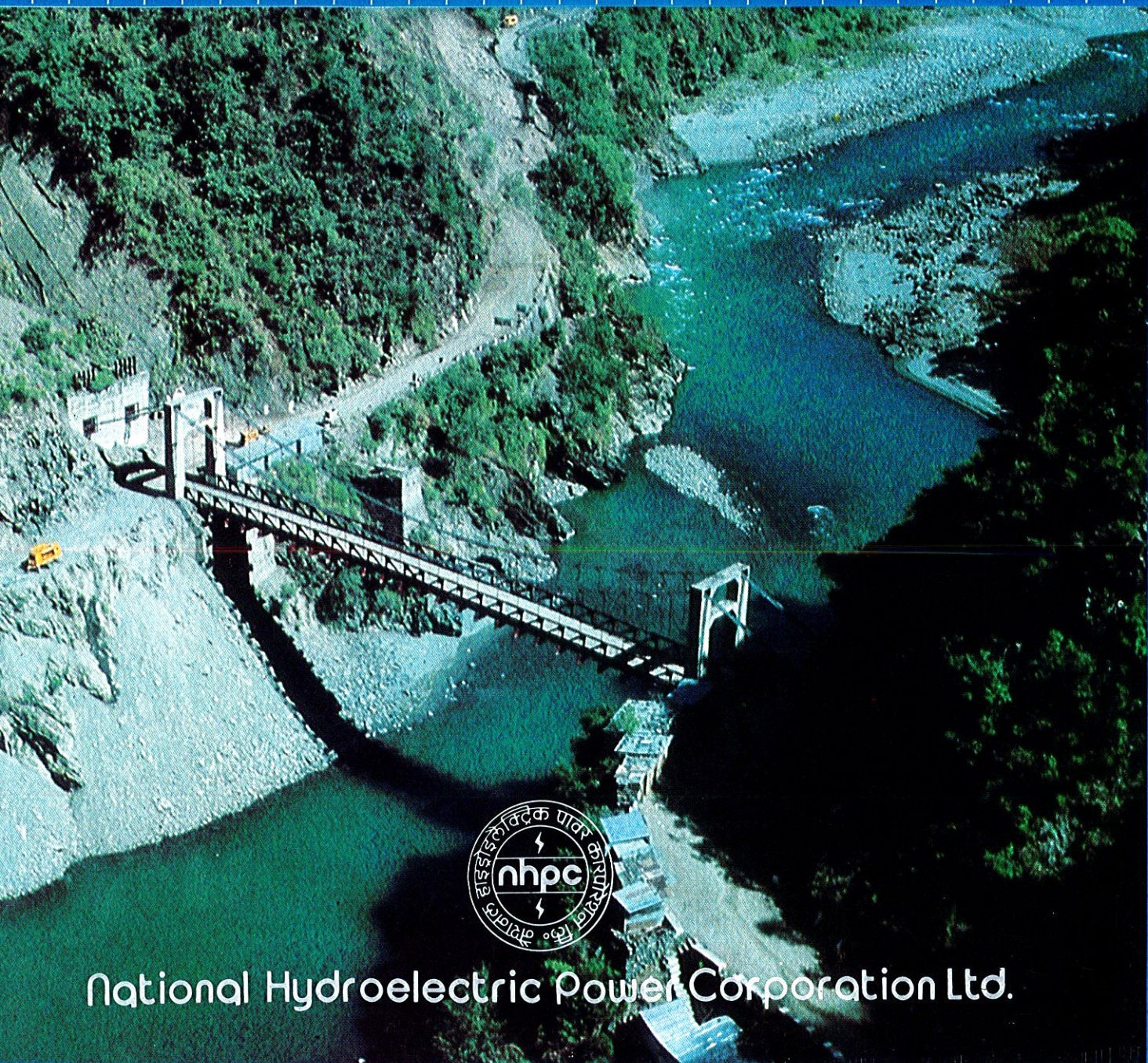


# Tenth Annual Report 1985-86

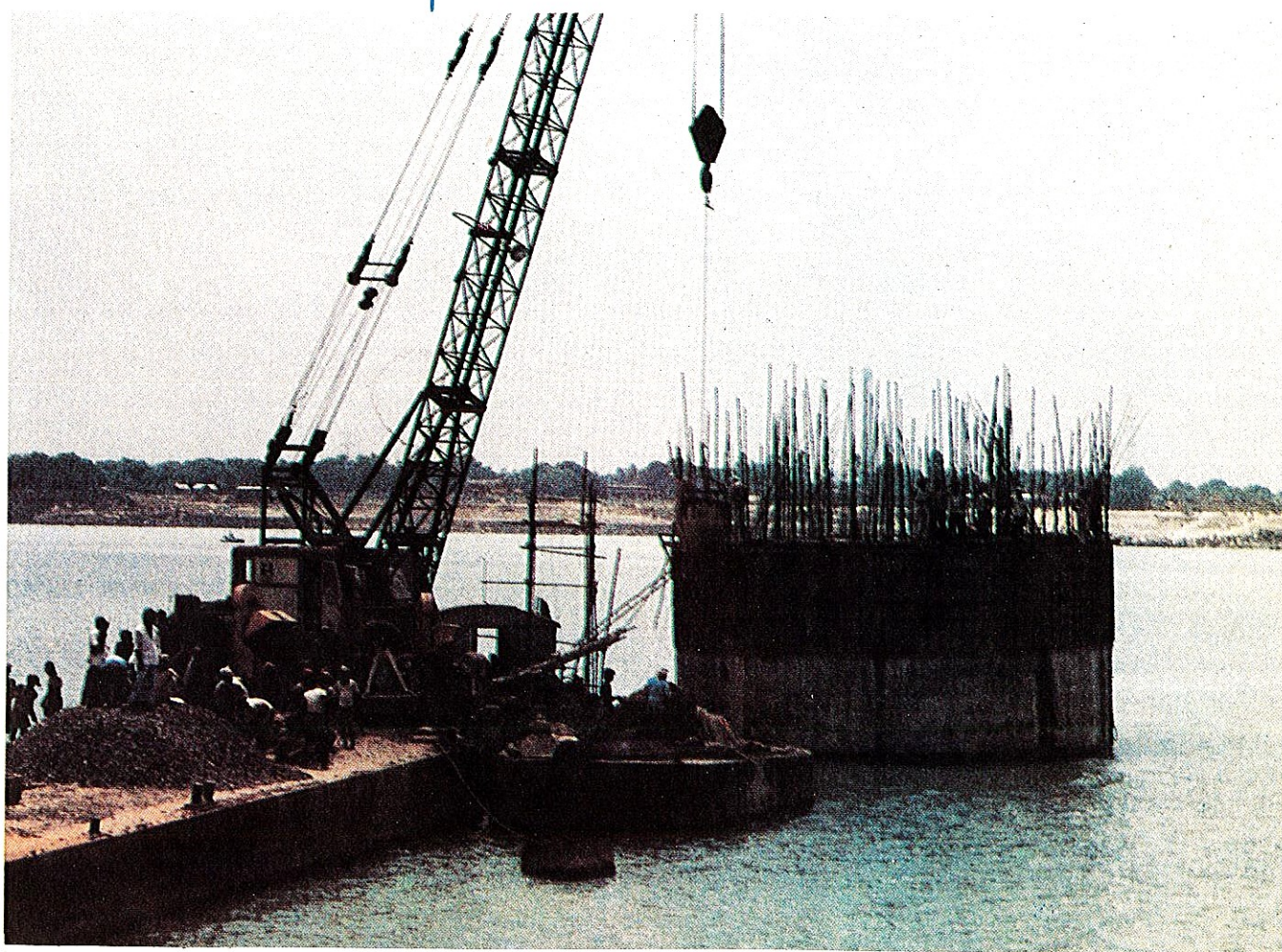


National Hydroelectric Power Corporation Ltd.



## CONTENTS

Board of Directors .....	2
Chairman's Speech .....	3
Directors' Report .....	5
Accounts .....	14
Auditors' Report .....	29
Comments of the Comptroller & Auditor- General of India. ....	33



Foundation for a 400 KV Transmission Tower being laid in the Ganges at Farakka.



## BOARD OF DIRECTORS

### Chairman & Managing Director

Shri B.R. Oberoi

### Company Secretary & Chief (Law)

Shri N.V. Raman

### Directors

Shri Satish Khurana

Shri K. Padmanabhaiah  
(upto 3.9.86)

Shri K.K. Kashyap  
Director (Technical)

Shri R.Rajagopalan  
Director (Finance)

Shri K. Madhavan

Shri T.C. Agrawal  
(upto 15.1.86)

Shri O.P. Sarbhoy  
(from 19.1.86)

Shri J.C. Gupta  
(from 4.9.86)

### AUDITORS :

#### Statutory Auditors

M/s. V. Malik & Associates  
GF-12, Mansarovar,  
90-Nehru Place,  
New Delhi-110 019.

#### Branch Auditors

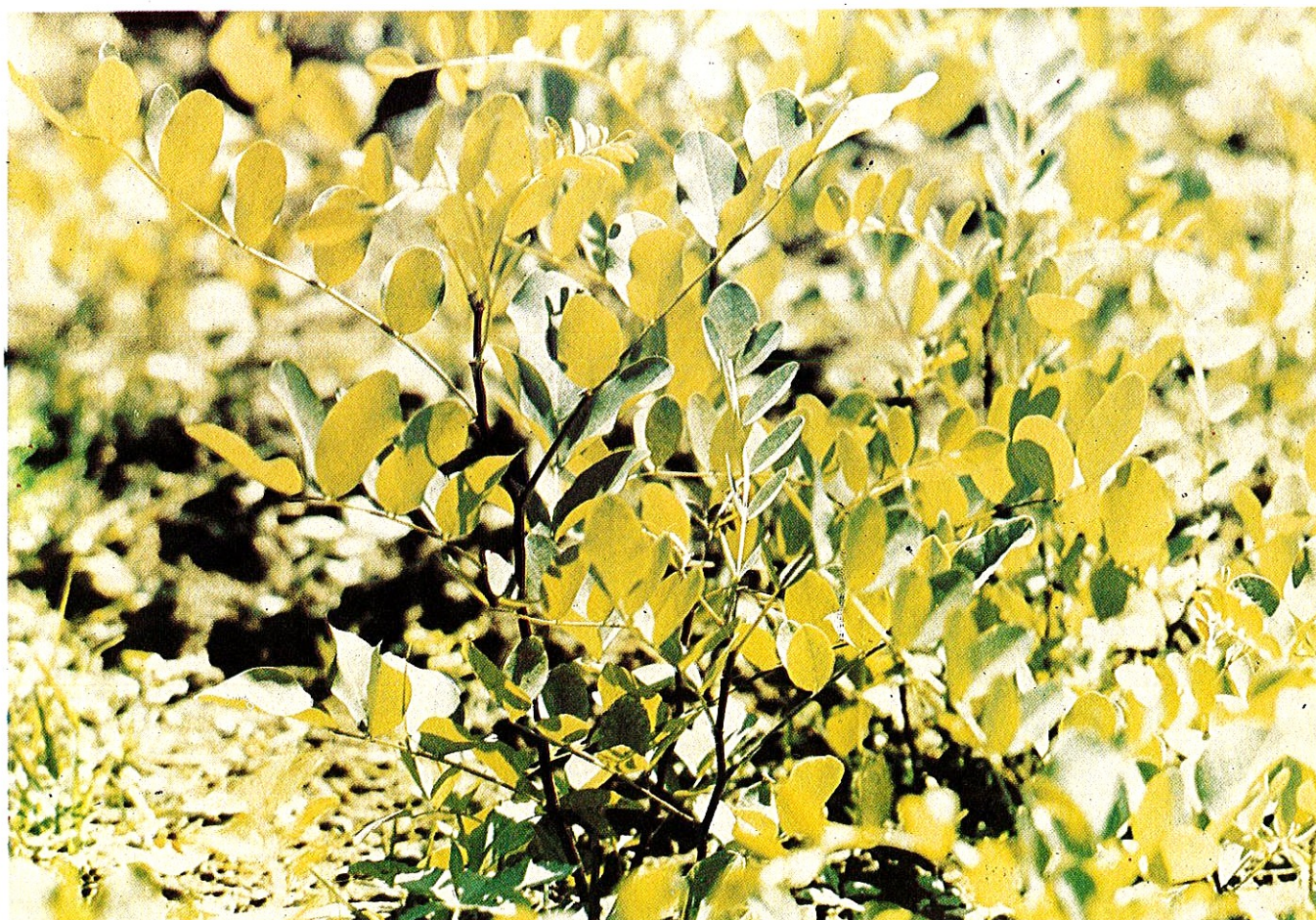
- (i) G.S. Mathur & Co.  
168-Golf Links  
New Delhi-110 003.
- (ii) M/s S.K. Singhanian & Co.  
19-A Chowringhee Road,  
Calcutta-700 087

#### Bankers

State Bank of India

#### Registered Office

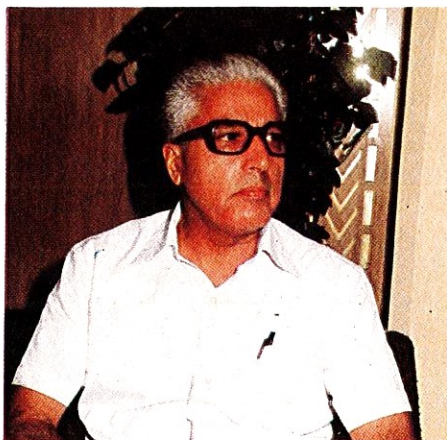
Hemkunt Tower  
98 Nehru Place,  
New Delhi-110 019.



*N.H.P.C. lays great importance to the compensatory afforestation at its different Project sites.*



## CHAIRMAN'S SPEECH



Dear Friends,

It gives me great pleasure to welcome you to the Tenth Annual General Meeting of the National Hydroelectric Power Corporation Limited. The audited accounts for the year 1985-86, the Directors' Report alongwith Auditors' Report and the comments of the Comptroller and Auditor-General of India, of your Company are before you for consideration and adoption.

Your Corporation has shown a net profit of Rs. 1,869.50 lakhs during the year registering an increase of over hundred percent over the previous year's figure of Rs. 856.34 lakhs. The sale of power during the year was Rs. 4,742.77 lakhs and the internal resources generated by the operational units were Rs. 2273.68 lakhs. Your Corporation made a contribution of Rs. 1,811.09 lakhs to the Public Exchequer during the year.

Permission was granted by the Government of India to your Corporation to raise resources upto Rs. 150 crores through issue of Bonds during 1986-87. Out of this, Rs. 60 crores are to be raised from

the public and Rs. 65 crores from financial and other institutions by issue of 14% redeemable, non-convertible, secured bonds of Rs. 1000/- each. I am glad to inform you that the public response to the NHPC Bonds has been overwhelming and the issue has been oversubscribed.

The operating units of the Corporation generated over 1091 million units of power, during 1985-86, and achieved a remarkable capacity utilization of over 79%. Your Corporation has been vigorously following up the recovery of sale proceeds from the beneficiaries. We are grateful to the Department of Power for the efforts taken by them for the expeditious recovery of the dues. The outstanding payments from the beneficiaries were about Rs. 48 crores at the end of the year. As your Corporation is engaged in the execution of important Hydroelectric Projects and proposes to take up a number of Projects in the near future, it is hoped that the beneficiaries will ensure prompt payment of the outstanding dues.



The Salal Project in Jammu & Kashmir has now reached the final phase of completion. The Rockfill Dam involving a total controlled fill placement of 8 million cu.m. is complete except final dressing and pitching items. The Concrete Dam, Penstocks for the stage-1, all the river bed works of the plunge pool essential for commissioning of the Project and all the transmission lines, are nearly complete. 95% works of the switchyard have already been completed and the balance 5% is expected to be completed before December, 1986. However, the Tail Race Tunnel continues to pose unexpected geological problems. The Corporation is making all out efforts to complete the balance work as expeditiously as possible. In spite of numerous hazards and unending surprises unfolded by nature in piecemeal, our workers and engineers are working round the clock, to ensure early commissioning of the Salal Project.

Construction activities at the Chamera Project are now in full swing. The Diversion Tunnel was daylighted on 7th April, 1986. Work on all other major components is progressing as per schedule. The start of construction activities on major components of the Tanakpur Project was delayed due to non-availability of land. However, the forest clearance from the Government of India was obtained in June this year and the Corporation has mobilised necessary manpower and other resources and is now fully geared to start construction in right earnest.

It is hoped that work on major complexes of the Dul Hasti Project

may start during the current working season after the foreign financial assistance is finalised. In the meanwhile, works on approach roads, bridges, residential accommodation and construction power arrangements as also the boring of the pilot tunnel progressed as per schedule.

Forest clearance has been obtained for Chamera, Dul Hasti, Rangit and Uri Projects also. The Corporation has also embarked upon an ambitious afforestation programme at the Chamera Project. It is proposed to plant about 23 lakhs trees in the Project and surrounding areas against a total 42,000 trees to be cut. Similar programmes have also been drawn up for other Projects of the Corporation.

A number of Projects have been identified by your Corporation for investigation. Work on the Uri and Rangit Projects will be taken up as soon as the Government clearance is received.

I am glad to inform that power from the Chukha Hydroelectric Project in Bhutan has started flowing into the Chukha Transmission System constructed by your Corporation. About 45 MW power received from the first unit of the Chukha Hydroelectric Project is being fed to the beneficiary States from September 7, 1986.

Your Corporation has completed the 220 KV D/C Salal-Udhampur and 220 KV S/C Salal-Jammu lines under the Salal transmission system. Work on other on-going transmission lines is progressing satisfactorily.

Your Corporation has been making concerted efforts to provide

congenial working conditions to its employees. A Training & Human Resources Development Division has been created to provide need-based training programmes to the employees. A Hydro power training institute has been set up at Baira Siul Project to train operators and supervisory staff engaged in the operation of hydro power generating stations and associated switchyards.

I take this opportunity to express our sense of gratitude to the various Central and State Agencies, Technical Bodies, the Hon'ble Union Minister of Energy, the Hon'ble Union Minister of State for Power and Secretary (Power) for the guidance and generous support extended by them. I am also thankful to all of you for your active involvement in the Corporation.

We are proud of all our executives, staff and workmen for their dedication, team work and commitment to tight schedules which has enabled the Corporation to march ahead with pride and confidence.



B.R. OBEROI  
Chairman & Managing Director

New Delhi  
Date : 30th September, 1986



## DIRECTORS' REPORT

### TO THE SHAREHOLDERS

Your Directors have great pleasure in presenting the 10th Annual Report along with the Audited Statement of Accounts for the year ended 31st March, 1986.

### 2. (a) FINANCIAL PERFORMANCE

The financial performance of the operating Units for the year was as under:-

	(Rupees in lakhs)	
1. Gross profit before providing for depreciation & interest.	3,835.24	
2. Less:		
i) Depreciation	394.50	
ii) Interest on Govt. Loans	1,567.24	
iii) Preliminary expenses written off.	4.00	1,965.74
3. Net profit for the year	1,869.50	

4. Prior period adjustments (Net)	(+9.68)
5. Net Profit	1,879.18

The contribution from the Corporation to the Public Exchequer during the year was Rs. 1,811.09 lakhs which includes payment of interest on Government Loans.

The internal resources generated during the year by the operational units were Rs. 2273.68 lakhs.

As regards sale of power, the sale during the year was Rs. 4,742.77 lakhs against the target of Rs.4,521.40 lakhs for the year.

### (b) ISSUE OF BONDS.

The Government of India have permitted your Company to raise

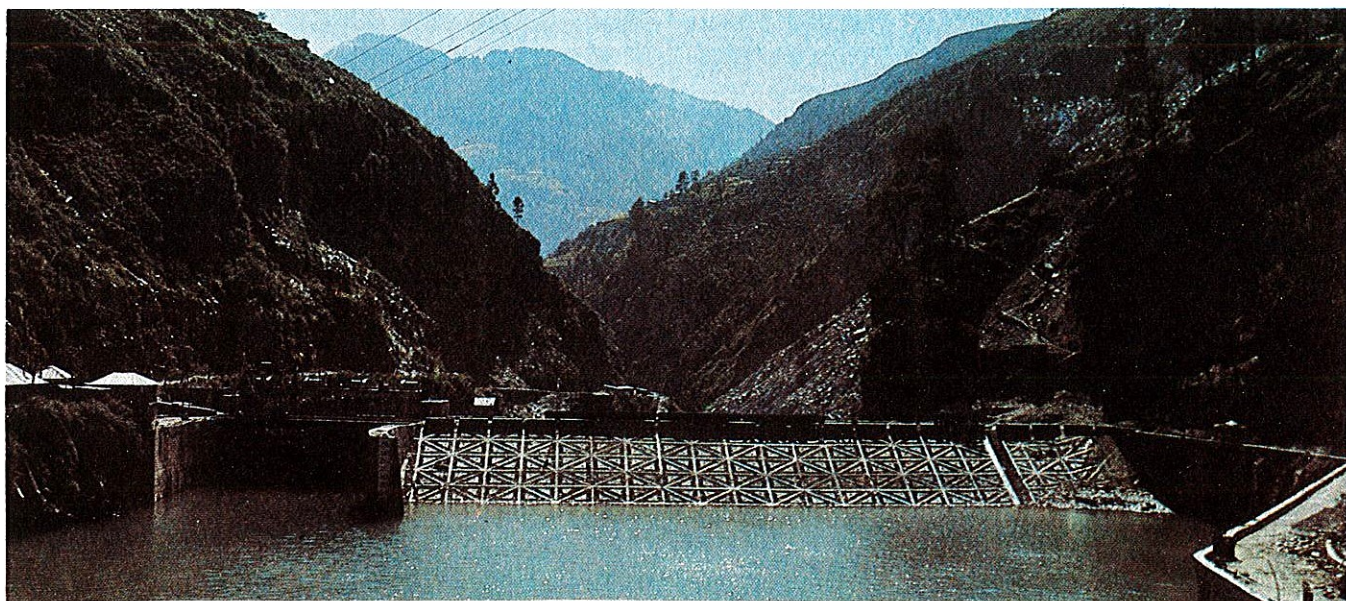
resources upto Rs. 150 crores through issue of 14% redeemable, non-convertible, secured bonds of Rs. 1000/-each, during 1986-87. Your Corporation has taken all the necessary steps in this regard.

### 3. PERFORMANCE OF OPERATING PROJECTS:

#### (a) Baira Siul H.E. Project (HP) :

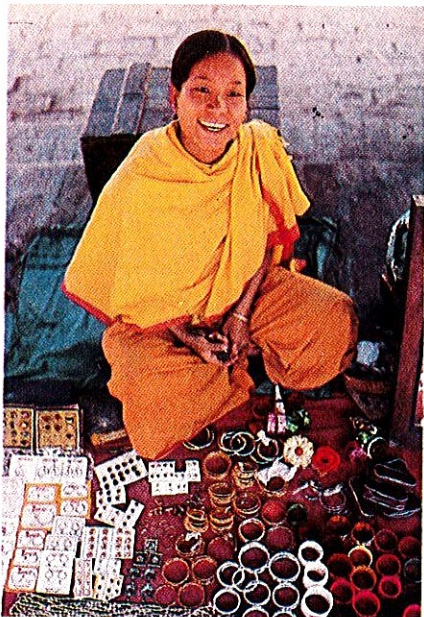
The quantum of electricity generated by the Baira Siul H.E. Project during the year 1985-86, was 677.555 million units against a target of 800 million units. Shortfall in generation was on account of less inflow of water in the rivers.

Keeping in view the actual inflow of water in the rivers for the last few years, the target for energy generation for Baira Siul Project during 1986-87 has been kept at 750 million units.



A view of the Baira Dam—Baira Siul Project.





The commissioning of Loktak Project has brought prosperity to the region.

#### (b) Loktak H.E. Project (Manipur) :

During the year, the Project has generated 413.601 million units of electricity against the target of 365 million units.

The target of generation of power from Loktak Power Station for the year 1986-87 has been kept at 410 million units, keeping in view the transmission constraints.

#### 4. PROGRESS OF PROJECTS UNDER CONSTRUCTION:

##### (1) Salal H.E. Project (345 MW) J & K :

###### Concrete Dam :

During the year, 211.8 TM<sup>3</sup> of concreting was placed against the target of 222.16 TM<sup>3</sup>, thus completing 97.44% of the work targetted for the year. All the blocks have reached full height. The work on the spillway Radial Gates,

Penstock Gates and Silt Excluder Gates is proceeding satisfactorily. As at the end of July 1986, 9 out of the 12 Radial Gates have been completed. All the embedded parts for penstock gates and stoplogs have been fixed, while the silt excluder gates are in the final stages of completion.

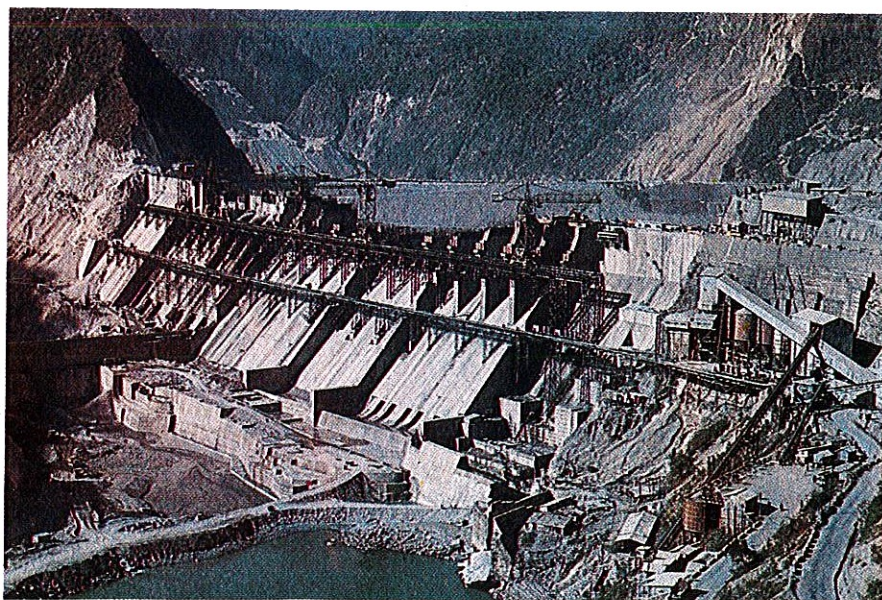
11.140 Thousand Running Metres (TRM) of curtain grouting was achieved in the Concrete Dam against a target of 12.960 TRM. As at the end of July 1986, nearly 85% of curtain grouting originally envisaged have been completed. However, with the extension of the curtain grouting on the left abutment as well as joining of the curtain grouting of the Concrete Dam with that of the Rockfill Dam as now proposed by the Technical Advisory Committee (TAC) of the Corporation, additional 30,000 RM of curtain grouting is required. Most of this will be completed before commissioning as per the recommendations of the TAC.

###### Rockfill Dam :

1664.57 TM<sup>3</sup> of placement has been achieved during the year against the target of 1704.42 TM<sup>3</sup>, thus, completing 96.52% of placement. As at the end of June, 1986, the dam has reached full height, while the pitching and the wrap round on the right abutment is in progress in the upstream side. On the downstream, the pitching as well as the dressing of the slope is in progress.

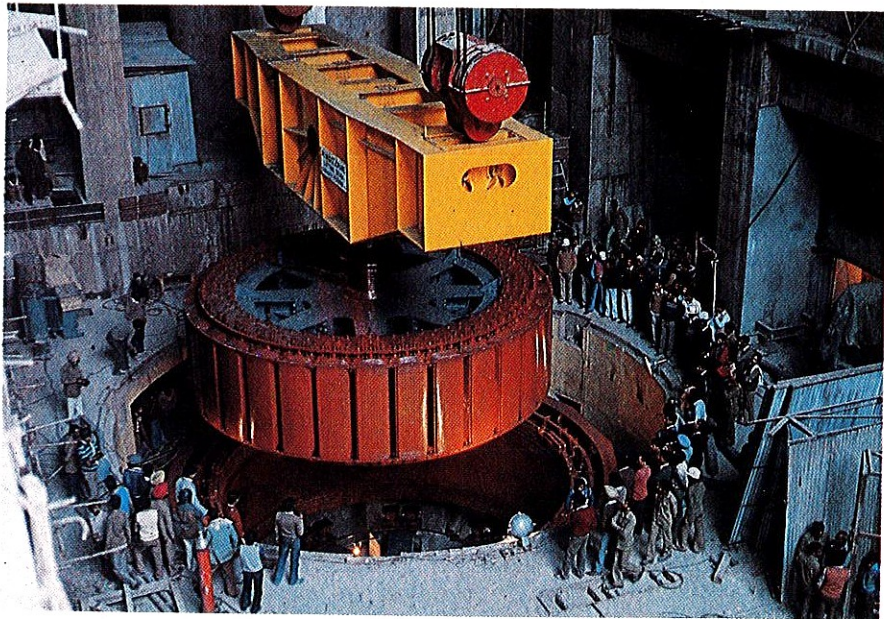
###### Power House:

44.10 TM<sup>3</sup> of concreting was achieved against a target of 52.8 TM<sup>3</sup>, thus, completing 86.14% of concreting. As at the end of July, 1986, most of the structural works of Power House Stage-I, have been completed. The tail pool lining and concreting of Unit-3 which are critical, are being expedited. The work has been taken up for the finishing items. Electro-mechanical erection of Unit-I has been completed. The final alignment is in



Close-up view of the Concrete Dam—Salal Project.





Final touches being given to Unit-I in the Salal Power House.

progress after grinding of the lower labyrinth. In Unit-2, the stator is almost complete and the work is in progress on the rotor as well as the turbine assembly. In Unit-3, scroll casing has been erected and tested and concreting has been taken in hand. The work of auxiliary equipment erection like, air system and water system is in advanced stage. The control cables are being laid between the control room and the switchyard.

In the switchyard most of the equipment have been erected and switchyard is in advanced stage of completion. Work is progressing on the bifurcation structure and draft tube gate embedded parts.

#### **Penstocks :**

14.8 TM<sup>3</sup> of excavation and 56.60 TM<sup>3</sup> of concreting was achieved against a target of 14.9 TM<sup>3</sup> of excavation and 74.024 TM<sup>3</sup> of concreting. In the case of penstock erection, 2050 MT of penstocks

were erected against the target of 2276 MT.

As at the end of July 1986, the penstocks for Stage-I are complete. In the case of Stage-II, the penstock Nos. P-4, P-5 & P-6 have been laid in the river bed portion and the ridge portion and the work is in progress on the dam slope.

#### **Tail Race Tunnel :**

268.1 M of heading, 926 M of benching and 795.05 M of overt lining were achieved against the target of 349.25 M of heading, 1051 M of benching and 976.05 M of overt lining. The slow progress on the Tail Race Tunnel was on account of the presence of shear zones on both faces. In addition, 160.5 M of invert lining was also completed. As at the end of July 1986, out of a total of 2463 M, 145 M of heading, 220 M of benching, 432 M of overt lining and 1897.5 M of invert lining remains to be done and it is expected that the work on

the Tail Race Tunnel will be completed by Feb., 1987.

#### **Drainage Gallery :**

The lining of the Drainage Gallery has been completed and during the year, 10639 RM of curtain grouting was achieved against a target of 11697 RM, bringing the cumulative progress to 70%. The Technical Advisory Committee of the Corporation has recommended the carrying out of chemical grouting of the Drainage Gallery to check excessive seepage observed in certain areas. This is being arranged.

#### **Plunge Pool :**

During the year, 152.77 TM<sup>3</sup> of excavation and 26.26 TM<sup>3</sup> of concreting was achieved against a target of 157.77 TM<sup>3</sup> of excavation and 27.21 TM<sup>3</sup> of concreting. As at the end of July, 1986 all essential works of Plunge Pool have been completed, except the wire crate works and concreting on the higher reaches of Zone A and B which is in progress.

#### **Flooding in July, 1986 :**

On 27th July, 1986 due to unprecedented rainfall and heavy flooding in the Lanjan Nallah, the dykes of upper detention reservoir got breached resulting in the flooding of the Power House as well as the Tail Race Tunnel. Immediate steps were taken for dewatering and the water was cleared from the outlet side Tail Race Tunnel by 5th August, 1986 and Power House inlet side by 7th August 1986. Construction works have since been resumed. No damage was caused to the turbine and generators. Dry out of the generator winding has been completed and tests carried out show that the machines are allright.



### **Project Completion :**

On 1st September, 1986, there was a flow of muck from a cavity near the heading on the inlet side of Tail Race Tunnel. The Tunnel got filled with muck upto 20m from the heading which made heading operations from the inlet side difficult. With a view to commission the Project expeditiously, it is now proposed to complete the balance heading operations of about 133m of Tunnel from the outlet side. To ensure that balance boring work is completed expeditiously, a set of Hydraulic Jumbos and other matching equipment are being diverted from Chamera. It is expected that all the three units of Salal Project would be commissioned during the financial year.

### **(2) Chamera H.E. Project (540 MW) H.P :**

Approval of the Govt. of India for



*Infrastructure work in progress at Dul Hasti (I&K).*

release of 982.5 ha. of forest land was received in February, 1986. 64 ha. of private land has also been acquired.

### **Construction of Major Works :**

#### **Diversion Tunnel :**

The Diversion Tunnel has been day-lighted on 7th April, 1986. The benching on the upstream and downstream has been completed by end July 1986. The laying of the foundations for the Kerbs inside the Tunnel are in progress. All efforts are being made to complete the tunnel for diversion of river by year end.

#### **Platforms and Dam Facility Area :**

About 1030 TM<sup>3</sup> of excavation has been completed against a total of 1700 TM<sup>3</sup> required for the construction of various structures, viz. the batching plant, the cableway structures and storage of bulk material required for dam concreting. Another 381 TM<sup>3</sup> of excavation from April to July 1986 has been done on dam facilities platform. Excavation of cableway Head Tower and concreting of Tail Tower is in progress.

#### **Power Tunnel :**

The Road Tunnel for approach to Adit-I was completed in July 1986.



*Inlet of the Diversion Tunnel—Chamera Project.*



The Portal for alternative Adit is being established. Upto March 1986, 43m of Adit-II of the power tunnel had been excavated. Another 62m of Adit-II has been excavated upto July, 1986.

#### **Tail Race Tunnel :**

The contract for the Tail Race Tunnel was awarded in March 1986. The construction of portal for Adit of Tail Race Tunnel has been taken up.

#### **Access Tunnel to Power House :**

During the year, 82m of Access Tunnel excavation has been completed against a total of 1243 m. Another 311 m of excavation has been done from April to July 1986.

#### **Engineering :**

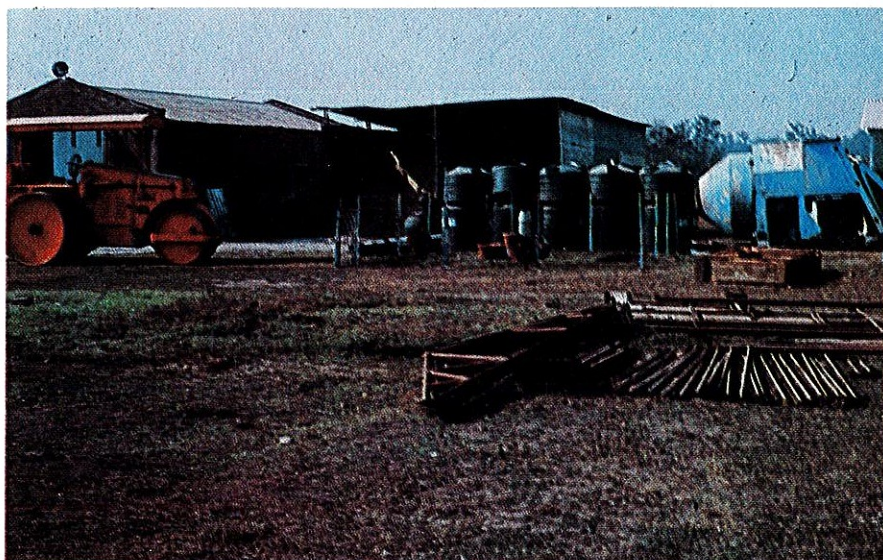
Engineering for Dam, Power Tunnel, Power House, Switchyard and model studies for dam spillway are in progress. All the construction equipment under Phase-I have been received at site. Most of the construction equipment under Phase-II have also been received and put to use as per requirement.

First unit of the Project is scheduled to be commissioned by January, 1990.

#### **(3) Tanakpur H.E. Project (120 MW) U.P. :**

Work on infrastructures such as residential accommodation, warehouses, approach roads, telecommunication facilities progressed satisfactorily on the land made available by U.P. Irrigation Department. At the rail head at Bareilly railway siding, development works and store sheds were completed.

18 Km long 33 KV Transmission Line and associated sub-stations for



*Machinery yard under construction—Tanakpur Project.*

construction power and 2 nos. 312.5 KVA DG sets, as stand-by arrangement, were commissioned.

#### **Major Works :**

During the year, contracts for major civil works have been awarded. Civil work on Barrage and Head Regulator could not be started during the year due to non-availability of forest land. Action for procurement of construction equipment required for civil works had also been completed.

The Forest clearance from the Govt. of India was obtained at the end of June' 86. 138 ha. of land has been resumed by the U.P. Govt. for compensatory afforestation and the orders have been issued by the U.P. Govt. for release of equivalent land to the Project at the end of August' 86.

Delay in getting the necessary forest land from the Government by

about one year, may affect the schedule of the Project.

#### **(4) Dul Hasti H.E. Project (390 MW) J & K:**

During the year, works on various approach roads, bridges, residential accommodation, and construction power arrangements progressed well.

#### **Pilot Tunnel :**

718 m of pilot tunnel has been bored upto the end of July, 1986.

Since bilateral foreign assistance for execution of the Project is under consideration, major civil works of the Project were not taken up for execution.

#### **(5) Koel Karo H.E. Project (710 MW) Bihar :**

No progress could be made in the construction of the Project due to continued resistance of local people towards the acquisition of land



required for the Project. However, efforts were continuing to convince the local people of the Government's intention to implement the rehabilitation scheme.

## 5. Investigation Projects:

### (1) Dhauliganga Stage-I (260 MW) U.P.

The Detailed Project Report, submitted to CEA in July, 1985, is awaiting techno-economic clearance.

As reported last year, a report on Master Plan Development of the Dhauliganga basin showing all the stages was submitted to CEA during May, 1985.

### (2) Konkan HE Projects (Maharashtra):

The Detailed Project Reports of Bav and Saptalingi HE Projects have been finalised and submitted to the Government of Maharashtra in May, 1986.

### (3) New Investigation Schemes

The Corporation has submitted estimates for the works of investigation of the following new projects in Pithoragarh Distt. of Uttar Pradesh:-

- a) Dhauliganga H.E. Project, Intermediate stage (380 MW)
- b) Goriganga H.E. Project, Stage-I (160 MW)
- c) Goriganga H.E. Project, Stage-II (120 MW)
- d) Goriganga H.E. Project, Stage-III (75 MW)

Government clearance is awaited.

## 6. New Projects:

Your Corporation is awaiting the Government clearance from the investment angle for the execution of the Uri H.E. Project in J & K and the Rangit H.E. Project in Sikkim.

Pre-construction investigation works are proposed to be taken up for the following projects in J & K, after necessary clearance from the Govt.:

- i) Sawalkot HE Project (600 MW)
- ii) Baglihar HE Project (450 MW)

## 7. Transmission Works:

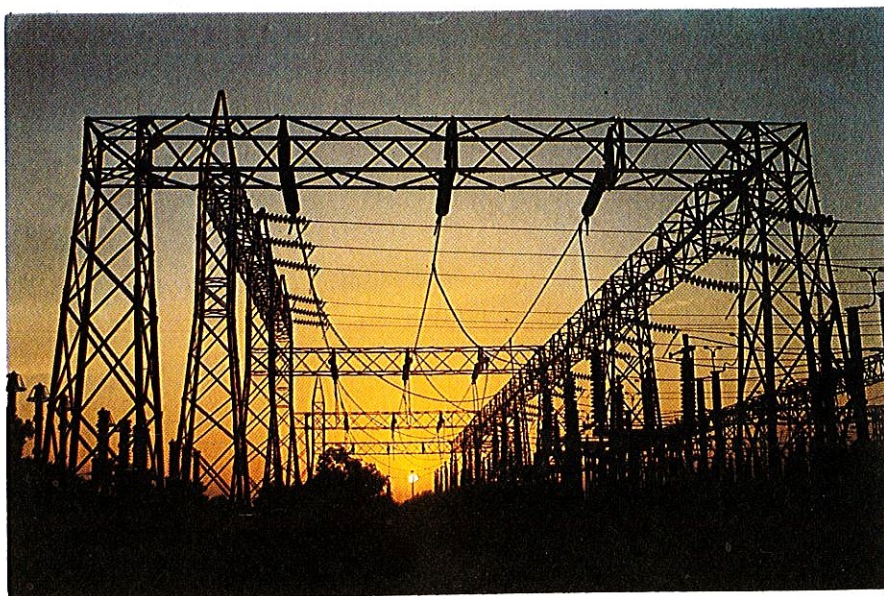
(1) The works on the construction of the following transmission systems have been completed:

- (i) 220 KV D/C Salal- Udampur and 220 KV S/C Salal- Jammu lines under Salal Transmission System.
- (ii) 220 KV transmission lines, 220/132 KV substations at

Birpara, Siliguri, Purnea and Malda, 400/220 KV sub-station at Farakka, and 220 KV switching station at Dhalkhola, associated with the Chukha Transmission System.

(2) Work on the following on-going transmission works progressed satisfactorily during the year:

- (i) Transmission System (Indian Portion) associated with Chukha Project.
  - 400 KV Malda-Farakka Transmission Line
  - 220 KV switching station at Bongaigaon
- (ii) Transmission System associated with Dul Hasti Project.
  - 400/220 KV sub-station at Kishenpur (220 KV Portion)
  - 132/33 KV sub-station at Kishtwar.
  - 132 KV S/C Udampur-Kishtwar Transmission Line



A view of a sub-station—Chukha Transmission System



(iii) Jeypore-Talcher Transmission System.

- 400 KV Jeypore-Talcher Transmission Line
- 400/220 KV sub-station at Jeypore, Rengali and 400 KV switching station at Indravati.

(iv) Transmission System for the Chamera Project

- 400 KV Chamera-Moga Transmission Line
- 400/220 KV sub-station at Moga

(v) Transmission system associated with Tanakpur Project.

- 220 KV Tanakpur-Bareilly Line

(vi) 132 KV Liematak-Jiribam Trans. Line (2nd Circuit)

(vii) 132 KV S/C Bongaigaon-Gaylephug Transmission line.

**(3) New Transmission Lines:**

- (i) Feasibility report for the Bongaigaon-Nanglam 132 KV line amounting to Rs. 720 lakhs has been cleared by CEA.

- (ii) The Ministry of Energy has approved construction of 400 KV D/C transmission line from Moga to Bhiwani as Central transmission project for evacuation of surplus power from Chamera Project and other Projects of NHPC in J & K. Estimates for the same have been prepared and submitted to Central Electricity Authority for techno-economic clearance.

**8. Vigilance Activities:**

The Corporation continued to give due importance to the vigilance work during the year under report. As part of preventive vigilance, surprise inspections and scrutiny of files

were carried out during the year under report.

**9. Official Language Policy:**

In accordance with the Official Language Policy of the Govt., all efforts were made during the year for progressive use of Hindi in the Corporation.

**10. Personnel and Industrial Relations:**

Efforts to provide alternative employment and to redeploy the manpower in excess of the requirement at completed projects were continued and as a result, the manpower at Baira Siul and Loktak Projects was reduced by 260 and 148 respectively during the year. Industrial relations during the year were generally cordial. In order to motivate the workers to achieve higher levels of production, a Productivity-linked Incentive

Scheme was formulated and submitted to the Government for approval.

**11. Training and Development:**

Greater impetus to Training & Development activities has been given with the creation of Training & Human Resources Development Division. The activities include Need-Based Programmes, Managerial Development Programmes, sponsorship to External Programmes, on-the-job Training, Induction Training and Foreign Training Programmes. During 1985-86, about 400 officials at various levels (both executives and non-executives) attended the training programmes (both in-house and sponsored) totalling to about 800 man-days.

A Hydro Power Training Institute has been set-up during the year at



Long shot of the sub-station at Siliguri-Chukha Transmission System.



Baira Siul Project to train Operators and Supervisory Staff engaged in the operation of Hydro Power Generating Stations and associated switchyards. Forty-two skilled personnel underwent 3 months' condensed course of ITI and were awarded Certificates of Proficiency during 1985-86.

## 12. Social Overheads:

Expenditure incurred on maintenance of townships, education and health facilities for the employees of the Corporation during the year is as under:

Township	Rs.58.34 lakhs
Education	Rs.10.24 lakhs
Health facilities	Rs. 43.82 lakhs

## 13. Auditors:

For the audit of the Accounts of the Corporation for the year 1985-86, M/s. V. Malik & Associates, New Delhi were appointed as Statutory Auditors, and M/s. G.S. Mathur & Co., New Delhi and M/s. S.K. Singhania & Co., Calcutta as Branch Auditors, by the Govt. of India.

## 14. Comments on the Qualifications of the Auditors contained in their Report.

The Comments of the Directors on the qualifications made by the Auditors in their Report are given in Annexure-I to this Report.

## 15. Particulars of Employees:

Information as per Section 217 (2A) of the Companies Act, 1956

read with the Companies (Particulars of employees) Rules, 1975, is given in Annexure-II forming part of this Report.

## 16. Directors:

Shri T.C. Agrawal and Shri K. Padmanabhaiah ceased to be Directors on the Board of Directors of the Corporation w.e.f. 16.1.86 and 4.9.86 respectively. The Board place on record their appreciation of the valuable services rendered by Shri Agrawal and Shri Padmanabhaiah. Shri O.P. Sarbhoy took charge as Director (Personnel) of the Corporation w.e.f. 19th January, 1986. Shri J.C. Gupta, Member (HE), CEA was appointed as part-time Director of the Corporation w.e.f. 4.9.1986.

## 17. Acknowledgements:

The Board acknowledge with thanks the guidance and help extended by the various Departments of the Government of India, particularly the Ministry of Energy (Department of Power); Ministry of Finance, Ministry of External Affairs, the Ministry of Industry & Company Affairs (Department of Company Affairs), Embassy of India in Nepal, the Central Electricity Authority, the Central Water Commission, CSMRS, the Survey of India and the Geological Survey of India. Thanks are also due to the HMG Nepal, CIDA, EDC and SNC/ACRES of Canada, SWED

POWER and SIDA of Sweden; the State Governments of West Bengal, Manipur, Mizoram, Jammu & Kashmir, H.P., U.P., Bihar, Sikkim, Maharashtra, Orissa and the State Electricity Boards who have been co-operating with us in our work in their States. But for the help, assistance and co-operation given by these and other agencies, it would not have been possible for the Corporation to achieve the progress registered so far. The Board of Directors are also grateful to the Comptroller and Auditor-General of India, the Auditors, and the Bankers for their valued co-operation.

The Board also take this opportunity to place on record their recognition and appreciation of the sincere and hard work done by the employees of the Corporation at all levels and for their continued enthusiasm which has been the main contribution towards the success of the Corporation.

For and on behalf of the Board of Directors



B.R. OBEROI  
CHAIRMAN & MANAGING  
DIRECTOR

New Delhi,  
29th Sept. 1986.



# ANNEXURE—I

## COMMENTS ON THE QUALIFICATIONS CONTAINED IN THE AUDITORS' REPORT, 1985-86.

Para in Auditors' Report.	Comments
II 5 (i)	No adjustment has been done as the treatment to be carried out in the accounts for collapse of 35 meters long tunnel at Loktak has to be decided in consultation with the Ministry of Energy. Adjustment, if any, will be done on receipt of decision in this regard.
5 (iii)	Inter-unit transfer balances are being periodically reconciled and adjusted. Unadjusted advices are carried forward and adjusted subsequently.
5 (vi)	The allowance was sanctioned after the cut-off date for creating the liabilities in the Project and therefore not shown as Prior period adjustment keeping in view the definition of Prior Period in International Accounting Standard IAS 8.
5 (vii)	As per legal advice, the liability for bonus has not arisen and accordingly, no liability has been created.
5 (viii)	The amount of commission paid to property agents with reference to the rent is marginal and as per practice, is shown under rent as the amount is charged to Incidental Expenditure During Construction. Reconciliation with General Ledger is being done in respect of advances, claims and recoverable amounts.
5 (ix)	Excess/Short debit/credit by the Bank have been regularly followed with the bankers. Rectification, if any, has to be done by the Bank and the Corporation does not anticipate any adjustment in its books.
5 (xi)	The amount of Orissa State Electricity Board's claim has been included in the contingent liability as the amount is still disputed.
5 (xii)	As 199.45 MT of cement was stated to have been received by the construction agency, i.e., Orissa State Electricity Board, it was not taken in stock.
5 (xv)	Some of the assets have been insured by the Corporation and the expenses of Rs. 357.51 lakhs and Rs. 6.46 lakhs have been shown in IEDC and Profit & Loss account respectively.
5 (xvii)	The expenditure incurred has been shown under Current Assets as the Project has been executed as deposit work.
5 (xviii)	The expenses are to be borne by the Corporation and accordingly shown correctly and separately in IEDC.
5 (xix)	The material was despatched in the month of March, 1986 and the claim was to be lodged by the Steel Authority of India as per agreement. The claims will be accounted for during 1986-87, if required.
5 (xx)	The Customs duty/refund for Chamera is under dispute with the Customs authorities regarding the applicability of the notification on some of the Bills of Lading filed with the Customs Department and is also under reconciliation. Pending settlement of the case, the amount has not been taken in accounts.
Para in Annexure to Audi- tors' Report	
A (i)	The situation details have been indicated in most of the cases except for some items for which broad details are given. The physical verification of fixed assets will be done in a phased manner, wherever it has not been done.
A (iii)	Physical verification at Baira Siul and Jeypore-Talcher will be carried out.
A (vi) & B (ii)	Emphasis has been given to follow the laid down procedure.
A (xi)	Internal Audit is being conducted periodically and is being strengthened suitably to cover the balance units also.
NOTE:	Also subject to Explanatory Notes on Accounts and Accounting Policies.



## BALANCE SHEET AS AT 31ST MARCH, 1986

(Rs. in thousands)

	Schedule	31.3.1986	31.3.1985
<b>SOURCES OF FUNDS</b>			
<b>1. Shareholders' Funds</b>			
(a) Capital	1	4,29,12,66	2,22,31,01
(b) Share Money Deposit		51,35,46	90,56,65
(c) Reserves and Surplus	2	41,42,16	22,62,98
		5,21,90,28	3,35,50,64
<b>2. Grants-in-aid</b>	3	—	98,94
<b>3. Loan Funds</b>			
Unsecured Loans	4	2,17,73,49	1,74,87,95
<b>TOTAL :</b>		<u>7,39,63,77</u>	<u>5,11,37,53</u>
<b>APPLICATION OF FUNDS</b>			
<b>1. Fixed Capital Expenditure</b>			
(a) Fixed Assets	5		
Gross Block		3,37,16,03	2,96,39,06
Less : Depreciation		33,55,82	23,79,44
Net Block		3,03,60,21	2,72,59,62
(b) Capital work-in-progress	6	2,29,72,36	1,16,53,74
		5,33,32,57	3,89,13,36
<b>2. Current Assets, Loans &amp; Advances</b>	7		
(a) Inventories		45,31,54	15,68,96
(b) Cash & bank balances		28,58,34	30,49,05
(c) Sundry debtors		48,43,25	35,21,97
(d) Other Current assets		67,96	61,36
(e) Loans & advances		1,42,36,39	95,80,27
		2,65,37,48	1,77,81,61
<b>Less : Current Liabilities and Provisions</b>	8		
Liabilities		59,30,33	55,85,49
<b>Net Current Assets</b>		2,06,07,15	1,21,96,12
<b>3. Miscellaneous expenditure</b>			
(to the extent not written off or adjusted)	9	24,05	28,05
<b>TOTAL :</b>		<u>7,39,63,77</u>	<u>5,11,37,53</u>
<b>Notes to the Accounts &amp; Contingent Liabilities</b>	13		
<b>Additional Information under part II of Schedule VI</b>	14		
<b>Schedules 1 to 14 and Accounting policy form an integral part of the Accounts.</b>			

**N.V. RAMAN**  
Secretary

**R. RAJAGOPALAN**  
Director (Finance)

**B.R. OBEROI**  
Chairman & Managing Director

As per our report of even date attached  
For V. MALIK & ASSOCIATES  
Chartered Accountants

NEW DELHI  
25th September, 1986

**VIPIN MALIK**  
Partner



## PROFIT AND LOSS ACCOUNT FOR THE YEAR ENDED 31ST MARCH, 1986

	Schedule	31.3.1986	(Rs. in thousands) 31.3.1985
<b>INCOME</b>			
1. Revenue from the sale of Electric Power		47,42,77	36,45,26
2. Fee for Construction Management		—	62,60
3. Miscellaneous Income	10	12,41	10,06
<b>TOTAL INCOME</b>		<u>47,55,18</u>	<u>37,17,92</u>
<b>EXPENDITURE</b>			
4. Generation, Transmission & Administration Expense	11	3,75,66	4,15,67
5. Employees' remuneration and benefits	12	3,00,43	2,95,46
6. Excise duty on generation		—	95,57
7. Royalty charges		1,55,20	1,33,34
8. Sales Tax on generation		88,65	—
9. Depreciation		3,94,50	3,86,73
10. Interest on Government Loans		15,67,24	15,30,81
11. Preliminary expenses written off		4,00	4,00
<b>TOTAL EXPENDITURE</b>		<u>28,85,68</u>	<u>28,61,58</u>
12. Profit/(Loss) for the year		18,69,50	8,56,34
13. Add/ (Less) prior period adjustments			
(a) Excess depreciation written back		—	12,90,36
(b) Others (Net)	9,68	9,68	(1,12)
14. Profit/(Loss) before Income-tax & Statutory Appropriations		<u>18,79,18</u>	<u>21,45,58</u>
15. Provision for Taxation		—	—
16. Profit/(Loss) after tax and Statutory Appropriations		18,79,18	21,45,58
17. Add/(Less) profit/(loss) brought forward from previous year		(81,76)	(22,27,34)
18. Profit/(Loss) carried over to Reserves & Surplus		<u>17,97,42</u>	<u>(81,76)</u>

**N.V. RAMAN**  
Secretary

**R. RAJAGOPALAN**  
Director (Finance)

**B.R. OBEROI**  
Chairman & Managing Director

As per our report of even date attached  
For. V. MALIK & ASSOCIATES  
Chartered Accountants

NEW DELHI  
25th September, 1986

**VIPIN MALIK**  
Partner



**SHARE CAPITAL****SCHEDULE-1**  
(Rs. in thousands)

Particulars	31.3.1986	31.3.1985
<b>AUTHORISED CAPITAL</b>		
80,00,000 Equity Shares of Rs. 1,000/- each	8,00,00,00	4,00,00,00
<b>ISSUED, SUBSCRIBED AND PAID UP CAPITAL</b>		
42,91,266 Equity Shares of Rs. 1,000/- each fully paid (out of this 6,29,529 shares have been allotted for consideration other than cash and one share has been allotted for part consideration other than cash)	4,29,12,66	2,22,31,01
	4,29,12,66	2,22,31,01

**RESERVES AND SURPLUS****SCHEDULE-2**  
(Rs. in thousands)

Particulars	31.3.1986	31.3.1985
1. Investment Allowance Reserve	23,44,74	23,44,74
2. Surplus as per Profit & Loss Account	17,97,42	(81,76)
	41,42,16	22,62,98

**GRANTS-IN-AID****SCHEDULE-3**  
(Rs. in thousands)

Particulars	31.3.1986	31.3.1985
<b>GRANTS-IN-AID FOR INVESTIGATION OF HYDROELECTRIC PROJECTS</b>		
1. Koel Karo	5,00	5,00
2. Dulhasti	5,00	5,00
3. Chamera	3,36,00	3,36,00
4. Dhaleshwari	1,66,84	1,66,84
5. Dhauliganga	2,53,31	2,01,29
6. Tanakpur	37,16	37,16
	8,03,31	7,51,29
<b>LESS : EXPENDITURE</b>		
1. Chamera	2,58,72	2,55,32
2. Dhaleshwari	1,49,58	1,48,56
3. Dhauliganga Stage-I	3,27,35	2,10,81
4. Tanakpur	37,16	37,66
5. Gauriganga	81,73	—
6. Barah Pump Storage Scheme, Alwar	53,85	—
7. Dhauliganga Stage-II	9,53	6,52,35
	9,17,92	98,94
	(-) 1,14,61*	

\* Represents excess of expenditure on investigation over receipts and transferred to Loans and Advances in Current Assets.



## UNSECURED LOANS

### SCHEDULE-4 (Rs. in thousands)

Particulars	31.3.1986	31.3.1985
1. Loans from Government of India	1,81,77,56	1,60,83,16
2. Loans from other sources	35,95,93	14,04,79
	<u>2,17,73,49</u>	<u>1,74,87,95</u>

## FIXED ASSETS

### SCHEDULE-5 (Rs. in thousands)

Particulars	Gross Block as at 1.4.1985	Additions/ Adjust- ments	Dedu- ctions/ Sales/ Transfers	Gross Block as at 31.3.1986	Total Depre- ciation as at 31.3.1986	Net Block as at 31.3.1986	Net Block as at 31.3.1985
1	2	3	4	5	6	7	8
1. Land (Freehold)	2,63,25	16,83	—	2,80,08	—	2,80,08	2,63,25
2. Land (Leasehold)	43,32	1,71,61	—	2,14,93	2,90	2,12,03	41,99
3. Buildings	26,91,85	1,57,63	—	28,49,48	6,07,32	22,42,16	21,57,79
4. Roads & Bridges	9,16,59	56,54	—	9,73,13	1,56,62	8,16,51	7,80,73
5. Plant & Machinery (Constn.)	20,15,55	30,80,20	1,29,26	49,66,49	14,12,10	35,54,39	10,37,38
6. Plant & Machinery (Generating)	38,11,69	24,23	—	38,35,92	2,63,07	35,72,85	36,50,43
7. Substation equipment	88,13	1,92,72	—	2,80,85	17,08	2,63,77	83,39
8. Hydraulic works including Dams, Tunnels, Channels & Penstocks	1,79,61,78	49,35	—	1,80,11,13	4,60,87	1,75,50,26	1,77,05,80
9. Vehicles & other Transport	5,15,87	2,56,49	1,26,62	6,45,74	2,07,80	4,37,94	3,71,00
10. Office furniture & fixtures, office equipment & other Appliances	2,15,88	1,25,59	1,23	3,40,24	50,15	2,90,09	1,81,41
11. Transmission Lines	7,47,29	—	—	7,47,29	90,82	6,56,47	6,78,91
12. Misc. equipment/ Other Assets	3,67,86	2,09,93	7,04	5,70,75	87,09	4,83,66	3,07,54
	<u>2,96,39,06</u>	<u>43,41,12</u>	<u>2,64,15</u>	<u>3,37,16,03</u>	<u>33,55,82</u>	<u>3,03,60,21</u>	<u>2,72,59,62</u>
PREVIOUS YEAR	2,65,52,00	32,67,23	1,80,17	2,96,39,06	23,79,44	2,72,59,62	



# CAPITAL WORK-IN-PROGRESS

**SCHEDULE-6**  
(Rs. in thousands)

Particulars	31.3.1986	31.3.1985
1. Survey, Investigation, Consultancy and other preliminary expenses	3,06,39	1,66,14
2. Building & Civil Engineering Works and communications	22,29,51	5,94,14
3. Roads and Bridges	19,43,04	8,20,30
4. Hydraulic works including Barrages, Dams, Tunnels, & Power channels	17,38,28	2,32,18
5. Penstock	—	2,85,91
6. Plant & Machinery in Generating Station	21,40	1,82
7. Electrical installations & substation equipments	36,83,61	29,14,52
8. Miscellaneous Assets	2,85,22	1,49,54
9. Trunk Transmission lines	34,66,58	29,51,23
10. Railway sidings	12,74	—
11. Incidental expenditure during construction		
Balance brought forward from last year	35,37,96	12,64,15
Less : Prior period adjustments	—	—
	35,37,96	12,64,15
<b>Add: Additions for the year</b>	57,58,71	27,68,75
(As per Annexure)	92,96,67	40,32,90
Less : Capitalised during the year	11,08	4,94,94
	92,85,59	35,37,96
	2,29,72,36	1,16,53,74



**STATEMENT OF INCIDENTAL EXPENDITURE DURING CONSTRUCTION  
FOR THE PERIOD ENDING 31.3.1986**

**ANNEXURE TO SCHEDULE-6**  
(Rs. in thousands)

Particulars	31.3.1986	31.3.1985
<b>1. EMPLOYEES' REMUNERATION AND BENEFITS</b>		
Salaries, wages, allowances & benefits	6,08,91	4,91,09
Expenses on surplus staff	3,36,32	1,51,34
Foreign service contribution	2,84	7,04
Contribution to Provident Fund	49,55	42,24
Contribution to Gratuity Fund	10,66	7,49
Staff Welfare	59,56	43,30
	<u>10,67,84</u>	<u>7,42,50</u>
<b>2. REPAIRS &amp; MAINTENANCE</b>		
Buildings	26,81	29,72
Roads & Bridges	—	16,66
Machinery & construction equipment	54,11	81,09
Others	78,99	25,01
	<u>1,59,91</u>	<u>1,52,48</u>
3. Travelling and conveyance	80,99	75,10
4. Expenses on staff cars & inspection vehicles	1,33,83	84,59
5. Land acquisition & rehabilitation expenses	44,41	—
6. Rent	1,07,11	71,64
7. Rent for Residential accommodation	36,45	21,09
	<u>1,43,56</u>	<u>3,42</u>
8. Rates and taxes	2,06	55,72
9. Insurances	3,57,51	5,40
10. Electricity charges	14,83	36,06
11. Telephone, Telex & postage	41,29	26,88
12. Advertisement & publicity	29,23	1,14,06
13. Design and consultation	1,35,54	1,43
14. Entertainment	1,54	33,22
15. Printing & stationery	60,28	
16. Payment to Auditors		
(a) Audit fee (prior period Rs. 60,000)	1,50	68
(b) for taxation matters	45	35
(c) Audit expenses (prior period)	1,96	1,15
	<u>3,91</u>	<u>2,18</u>
17. Interest on loans	6,35,63	95,41
18. Bank charges and interest	53	15
19. Transfer of technology	1,32,15	11,33
20. Loss on materials/Assets written off	1,86	1,21
21. Foreign consultancy charges	24,21,78	13,33,19
22. Depreciation	6,55,51	2,26,33
23. Other expenses	1,14,62	70,31
	<u>62,38,81</u>	<u>31,63,70</u>

(Contd.)



(Rs. in thousands)

Particulars	31.3.1986	31.3.1985
<b>LESS: RECEIPTS AND RECOVERIES</b>		
1. Sale of Scrap material	3,81	3,97
2. Electricity charges	1,52	10
3. Hire charges of Plant & Machinery	18,95	24,05
4. Rent	1,22	81
5. Interest :		
Term Deposits & Savings Bank	65,90	95,35
Loans and Advances	20,12	8,88
6. Miscellaneous Receipts & Recoveries	26,99	20,51
7. Profit on sale of Assets	—	36
	<u>1,38,51</u>	<u>1,54,03</u>
<b>Net expenditure</b>	<b>61,00,30</b>	<b>30,09,67</b>
<b>LESS:</b>		
1. Design charges allocated to Capital work-in-progress	92,29	75,56
2. I.E.D.C. allocated to Investigation, Deposit, Agency Works and operating projects	<u>260,66</u>	<u>1,65,23</u>
	57,47,35	27,68,88
Add/(less) prior period adjustment (Net)	<u>11,36</u>	<u>(13)</u>
<b>Amount transferred to Capital work-in-progress</b>	<b>57,58,71</b>	<b>27,68,75</b>

**NOTES:****1985-86****1984-85**

Rs.

Rs.

1. a) The above expenditure includes the following amounts paid to Directors:
  - i) Salaries and allowances 2,29,523 1,19,349
  - ii) Leave encashment 600 14,297
  - iii) Contribution to Provident Fund 18,824 11,595
  - iv) Rent for residential accommodation 46,962 34,833
  - v) Medical Reimbursement 14,630 7,287
  - vi) Travelling Expenses 74,544 1,77,049
  - vii) Leave Travel concession 4,901 1,202
- b) Whole-time Directors were also allowed the use of company's car for official journeys and for private journeys upto 1000 kms. on payment of Rs. 150/- p.m. in terms of Government Sanction. Perquisite value of staff car, if available for unrestricted use, would have worked out to Rs. 11,310 for 1985-86 (previous year Rs. 8,250/-).
2. The above does not include Rs. 72.64 lakhs (Previous year Rs. 53.11 lakhs) on account of shortages/losses of material, which are under investigation. Pending finalisation of the investigation, the amount has been shown under Capital work-in-progress and Current Assets.



## CURRENT ASSETS, LOANS AND ADVANCES

**SCHEDULE-7**  
(Rs. in thousands)

Particulars	31.3.1986	31.3.1985
<b>1. INVENTORIES</b>		
Stores & Spare Parts including inventory in transit (at estimated cost)	45,31,54	15,68,96
<b>2. CASH &amp; BANK BALANCES</b>		
i) Cash, Imprest, Postal Orders & Postal stamps	17,91	33,74
ii) Balances with Scheduled Banks		
Savings Bank Account	28,37,61	29,16,27
Short-Term Deposits	—	90,00
(iii) Balances with Non-Scheduled Banks		
	Maximum balance during the year	
	1985-86	1984-85
Current Accounts		
Nepal Rashtra Bank, Kathmandu	1,86	15,73
Nepal Bank Ltd.	7,18	53,62
	52	1,86
	2,30	7,18
<b>3. SUNDRY DEBTORS</b>		
i) Debts outstanding for a period exceeding six months (considered good)	27,17,87	17,71,12
ii) Other debts less than six months (considered good)	21,25,38	48,43,25
		17,50,85
		35,21,97
<b>4. OTHER CURRENT ASSETS</b>		
i) Interest accrued on Deposits	13,39	41,98
ii) Workshop & General Suspense	54,57	19,38
<b>5. LOANS &amp; ADVANCES</b>		
Advances recoverable in cash or kind or for value to be received		
Secured (considered good)	1,51,28	60
Unsecured (considered good)	1,37,27,69	84,27,73
<b>Loans</b>		
To Employees (Secured)	1,15,61	76,11
Balance with Customs and Port Trust Authority	2,41,81	10,75,83
	2,65,37,48	1,77,81,61

### NOTES :

- Advances due from Directors Rs. 90,880 (Maximum amount due at any time during the year amounts to Rs. 99,968 Previous year Rs. 27,624) (Previous year Rs. 1,559).
- Advances due by Companies in which any Director of the Corporation is a Director or member, amounts to Rs. 85.58 lakhs (Previous year Rs. 13.33 lakhs).



**CURRENT LIABILITIES AND PROVISIONS****SCHEDULE-8**  
(Rs. in thousands)

Particulars	31.3.1986	31.3.1985
<b>LIABILITIES</b>		
1. Sundry Creditors	6,89,05	6,13,95
2. Unspent amount of Deposit/Agency works	1,47,87	3,05,43
3. Deposits, Retention Money from contractors and others	5,43,13	4,03,52
4. Other liabilities	14,56,60	10,01,59
5. Interest accrued but not due on loans	6,81,31	5,15,07
6. Liability for cheques issued	24,12,37	27,45,93
	<u>59,30,33</u>	<u>55,85,49</u>

**DETAILS OF DEPOSIT WORKS AND PROJECTS ON AGENCY BASIS****ANNEXURE TO SCHEDULE-8**  
(Rs. in thousands)

Particulars	Amount of Deposit upto 31.3.1986	Expenditure upto 31.3.1985	Expenditure during 1.4.1985 to 31.3.1986	Share of Corporate Office Expenditure	Total Expenditure upto 31.3.1986	Unspent Amount
<b>A. DEPOSIT WORKS</b>						
<b>TRANSMISSION CONSTRUCTION UNITS</b>						
1. Gangtok to Melli-Kalimpong	4,24,13	4,19,63	—	—	4,19,63	4,50
2. Gangtok to Dikchu	4,72,18	4,47,35	6,20	12	4,53,67	18,51
3. Liematak-Jiribam	1,77,30	1,58,08	—	—	1,58,08	19,22
4. Ramnagar-Gandak	6,92	7,24	2,77	6	10,07	(-) 3,15*
<b>B. PROJECTS ON AGENCY BASIS</b>						
1. Salal Project	3,87,17,13	2,93,49,95	91,99,37	2,06,05	3,87,55,37	(-) 38,24*
2. Devighat Project	40,69,42	39,97,36	12,11	28	40,09,75	59,67
3. Nuwakot R.E. Project	1,39,64	2,27	90,68	2,05	95,00	44,64
4. Trishuli Power Resources Inv. Works	5,00	—	3,60	8	3,68	1,32

NOTE : Expenditure on Transmission Construction Units and Projects on agency basis represents cash expenditure only and does not include accrued expenditure. Expenditure, however, includes Advances to Staff, Suppliers, Contractors, Deposits and unconsumed stocks.

\*Shown in Current Assets under the head 'Amount recoverable.'



## MISCELLANEOUS EXPENDITURE

**SCHEDULE-9**  
(Rs. in thousands)

Particulars	31.3.1986	31.3.1985
<b>MISCELLANEOUS EXPENDITURE TO THE EXTENT NOT WRITTEN OFF OR ADJUSTED</b>		
1. Preliminary expenses	24,01	28,01
2. Deferred Revenue Expenditure	4	4
	<u>24,05</u>	<u>28,05</u>

## MISCELLANEOUS INCOME

**SCHEDULE-10**  
(Rs. in thousands)

Particulars	31.3.1986	31.3.1985
1. Other Miscellaneous receipts and recoveries	9,58	5,18
2. Profit on Sale of fixed Assets	2,83	4,88
	<u>12,41</u>	<u>10,06</u>

## GENERATION, TRANSMISSION AND ADMINISTRATION EXPENSES

**SCHEDULE-11**  
(Rs. in thousands)

Particulars	31.3.1986	31.3.1985
<b>GENERATION &amp; TRANSMISSION EXPENSES</b>		
1. Consumption of Stores and Spares	33,34	25,92
2. Repairs and Maintenance		
a) Buildings	27,58	36,79
b) Machinery	75,51	1,00,31
c) Others	70,76	86,77
3. Wheeling charges	51,48	50,11
4. Other Operational expenses	3	22

(Contd.)



(Rs. in thousands)

Particulars	31.3.1986	31.3.1985
<b>ADMINISTRATION EXPENSES</b>		
5. Rent	—	39
6. Rates & Taxes	96	58
7. Insurance	6,46	5,85
8. Electricity charges	6,89	2,30
9. Travelling & conveyance	12,76	9,59
10. Telephone, telex & postage	2,43	1,95
11. Consultancy charges	5,69	4,31
12. Advertisement & publicity	1,19	71
13. Entertainment expenses	25	16
14. Printing & Stationery	3,10	4,45
15. Corporate Office Management expenses	46,04	36,99
16. Other Miscellaneous expenses	31,19	10,68
17. Loss on Sale of Assets	—	5
18. Other expenses on Construction Management	—	37,54
	<u>3,75,66</u>	<u>4,15,67</u>

**EMPLOYEES' REMUNERATION AND BENEFITS****SCHEDULE-12**  
(Rs. in thousands)

Particulars	31.3.1986	31.3.1985
1. Salaries, wages and allowances	2,41,37	2,53,00
2. Company's contribution to Provident & Gratuity Funds	15,94	15,25
3. Staff welfare expenses	43,12	27,21
	<u>3,00,43</u>	<u>2,95,46</u>



## EXPLANATORY NOTES

## SCHEDULE-13

1. Contingent liabilities exist in respect of the following:
  - (a) Claims against the company not acknowledged as debts amounting to Rs. 542.50 lakhs (previous year Rs. 384.86 lakhs) excluding the cost of a piece of land at Torpa (Ranchi), the value of which cannot be ascertained at present.
  - (b) Income tax demands/liabilities Rs. 24.96 lakhs (Previous year Rs. 563.82 lakhs).
  - (c) Estimated amount of Contracts remaining to be executed on Capital accounts and not provided for, is Rs. 21334.76 lakhs (previous year Rs. 2497.66 lakhs). The contingent liability, if any, in respect of the Projects executed on Agency basis, Deposit Works and Works executed against Grants-in-aid have not been included as the Corporation does not anticipate any liability.
2. The Government of Himachal Pradesh has raised claim against the Corporation for share of profit earned from Baira-Siul Project. As per the revised formula approved by the Central Government, the Royalty at the rate of 1.5 paise per unit is only payable to the State Government and accordingly the provision for Royalty amounting to Rs. 101.23 lakhs, during the year, has been made.
3. The cost of land represents provisional/initial payments towards compensation and other incidental expenses. The title of land in certain cases has not been passed on to the Corporation pending completion of legal formalities.
4. Rs. 453.01 lakhs included under "Communication" in construction work-in-progress relates to expenditure incurred on Roads, Bridges, and culverts on land not belonging to the Corporation and will be allocated in terms of Accounting Policy No. 10.
5. The priced stores Ledgers are complete except in Chamera and Tanakpur. However, pending detailed reconciliation, the balance of inventories Rs. 4531.54 lakhs has been taken as per books of accounts.
6. The agreements for the supply of power with Delhi Electric Supply Undertaking and Himachal Pradesh State Electricity Board are under finalisation. Pending finalisation of the agreements, sale to DESU and HPSEB has been accounted for on a provisional basic rate of 40.45 paise and 41.85 paise respectively.
7. Pending receipt of verified bills and other related documents, no provision has been made in respect of some Capital Stores received and consumed within the year against which advance payments have not been adjusted.
8. Corporation has paid an ad hoc amount of Rs. 278.00 lakhs to Income Tax Department on Consultancy Fees paid to Foreign Consultants pending determination of Tax liability.
9. **In Baira Siul Project :**
  - (a) The Current Assets and Liabilities include balance of Rs. 82.81 lakhs and Rs. 164.89 lakhs respectively on account of stores/electricity issued to Contractors/Advance payment to Suppliers and Sundry Creditors for supply of materials after reducing minus balance of Rs. 30.00 lakhs and Rs. 183.51 lakhs respectively. The list of balances including the minus balances are being reviewed for correction.
  - (b) Claims amounting to Rs. 3.55 lakhs lodged with Insurance Companies will be accounted for as and when realised.
  - (c) The details for Rs. 7.78 lakhs given to staff/Divisions is under review and adjustment.
10. **In Tanakpur Project :**
  - (a) Current Assets and Liabilities include the balances on Account of stores issued to contractors Rs. 1.03 lakhs and advance payment to suppliers Rs. 2124.77 lakhs after reducing minus balances of Rs. 14.77 lakhs and Rs. 2.46 lakhs respectively.
  - (b) Details of other liabilities of Rs. 6.15 lakhs is under reconciliation.
11. Previous year's figures have been suitably re-arranged, wherever practicable, to correspond to the current year's figures.

**ADDITIONAL INFORMATION REQUIRED UNDER PART-II OF  
SCHEDULE VI OF THE COMPANIES ACT, 1956**

**SCHEDULE-14**

(Rs. in thousands)

Particulars	1985-86	1984-85
<b>1. EXPENDITURE ON EMPLOYEES</b>		
Expenditure on employees who are in receipt of remuneration not less than Rs. 36,000/- per annum if employed throughout the year or Rs. 3000/- per month if employed for part of the year.		
<b>a) Employed throughout the year</b>		
i) Number of employees	410	252
ii) Salary and Wages (Rs. in thousands)	1,94,63	1,16,06
iii) Value of perquisites (Rs. in thousands)	2,44	1,11
<b>b) Employed for part of the year</b>		
i) Number of Employees	20	35
ii) Salary and Wages (Rs. in thousands)	5,99	10,75
iii) Value of perquisites (Rs. in thousands)	3	52

(This does not include employees at Salal and Devghat which are being executed on agency basis and the remuneration of such employees is debited to deposits from the Government of India and are not debited to the Corporation's Incidental Expenditure during Construction).

(However, information for Salal and Devghat Projects is as under :

	1985-86		1984-85	
	Salal	Devghat	Salal	Devghat
<b>a) Employed throughout the year</b>				
i) Number of Employees	55	2	37	8
ii) Salary and Wages (Rs. in thousands)	23,49	94	13,92	3,77
iii) Value of perquisites (Rs. in thousands)	1,16	—	1,74	47
<b>b) Employed for part of the year</b>				
i) Number of Employees	2	—	1	9
ii) Salary and Wages (Rs. in thousands)	51	—	33	2,08
iii) Value of perquisites (Rs. in thousands)	3	—	4	26

**NOTES:—**

- The Gratuity amount has not been taken into account as the same has been provided on the basis of Gratuity-cum-L.I.C. Policy taken with the Life Insurance Corporation.
- Emoluments of Devghat employees include foreign allowances.

<b>2. EXPENDITURE INCURRED IN FOREIGN CURRENCY</b>	1985-86	1984-85
i) Know-how	—	—
ii) Other Miscellaneous Matters	3,50,33	17,16,47



Particulars	1985-86	1984-85		
3. VALUE OF SPARE PARTS & COMPONENTS CONSUMED (O & M PROJECTS)				
i) Imported	—	—		
ii) Indigenous	33,34 (100%)	25,92 (100%)		
4. VALUE OF IMPORTED PLANT & MACHINERY AND SPARES	30,51	14,90,34		
5. LICENSED/INSTALLED CAPACITY & ACTUAL PRODUCTIONS				
	Baira Siul	Loktak		
	1985-86	1984-85	1985-86	1984-85
1. Licensed Capacity	180 MW	180 MW	105 MW	105 MW
2. Installed capacity	180 MW	180 MW	105 MW	105 MW
3. Actual Production (in million units)	677.55	660.78	413.60	260.17
4. Value (Rs. 000)	278039	257175	196237	107321
	(653.39 MU)	(641.24MU)	(402.95 MU)	(233.29 MU)

## ACCOUNTING POLICIES

1. Liability accruing from year to year on account of service gratuity is discharged by paying requisite premium on LIC policy and accounted for in the year of payment.
2. Liability for payment for imported equipment/service is worked out with reference to the rate of exchange ruling on the date of payment.
3. The Corporation has received grants-in-aid for investigation of various projects. The balance of grants-in-aid is being reflected in accounts under Liabilities and Provisions after deducting expenditure incurred on the investigation works. The ownership of the assets for the expenditure incurred from grants-in-aid does not vest with the Corporation and hence is not included in the assets of the Corporation.
4. Liability, if any, for capital works executed but not measured has not been provided as the works have not been finally inspected and accepted by the Corporation. Similarly, liability for material in transit has not been provided till the time of receipt, inspection and acceptance of the material by the Corporation.
5. The completed assets have been capitalised on the basis of cost incurred on construction of such assets. However, where the actual expenditure could not be determined, the same has been determined on the basis of estimated cost.
6. The amounts contributed by other agencies including State Governments towards part of cost of certain Assets belonging to Corporation have been reduced from the cost of such Assets and the net cost has been shown in the Accounts.
7. In the Projects under construction, the grant/share of cost/expenditure incurred on the assets on land not belonging to the Corporation has been accounted for under construction work-in-progress pending final allocation.
8. Depreciation on Assets, Plant & Machinery, equipment etc. used for generation/transmission, operation and maintenance of generating stations is being charged with reference to the rates ascertained under notification issued under sub-section 1 of Section 68 of Electricity (supply) Act, 1948 from the year following the year in which the Assets are put up to use. Depreciation on construction plant and machinery, equipment, transport vehicles, office equipment, buildings is provided upto 95% of the cost on Straight Line method by dividing the original cost of the Assets by the specified period calculated in accordance with the Income Tax Act, 1961 and rounded to the next two decimals on higher side.

9. (a) Inter Project/Unit transfers of Plant & Machinery and stores are being transferred at Book Value.
- (b) Surplus/obsolete stores and equipment lying at the Projects are being identified on periodical intervals. The surplus items so identified are being transferred to other projects/Units of the Corporation where the same are required. Surplus equipment/stores are also given to other Project/Undertakings/Departments of the Central/State Governments depending upon their requirements for such items. Depreciation is not provided on machinery and equipment declared surplus to the requirement of Project/Unit. The losses -if any, on disposal is being accounted after the disposal of such items.
10. The total amount of incidental expenditure during construction and intangible expenditure incurred on the project which has been put to commercial operation during the year have been allocated on the tangible fixed immovable assets excluding land on the basis of cost appearing/adjusted as on 1st day of the start of commercial production.
11. Value of stock of capital stores and revenue stores lying at various works/sites are directly charged to construction work-in-progress and generation, transmission and administrative expenses respectively.
12. The petty items and tools, the individual value of which is less than Rs. 100/- are being charged to consumption account. The value of loose tools costing Rs. 100/- and more in each case has been capitalised and shown under loose tools. The value of loose tools so capitalised has been written off in 5 equal annual instalments by debit to consumption of loose tools.
13. The Corporate Office expenses excluding advances and assets but including remuneration to surplus employees are allocated as under:—
- (a) On the existing Transmission Lines being executed by the Corporation as deposit works at a flat rate of 2% of the direct capital expenditure incurred. The profit or loss, if any, on deposit work taken on fixed Administration/Management fees would be adjusted/accounted for on completion of such work and finalisation of its account.
- (b) Estimated Design expenses incurred in the Corporate Office in respect of Projects/Units on the basis of quantum of services rendered to the respective Projects/Units.
- (c) On operational projects @ 1% of sales of energy excluding wheeling charges and excise duty.
- (d) The balance expenditure is allocated to Projects under construction, investigation, agency basis and capital expenditure on operation Projects on pro-rata basis in the ratio of their net capital expenditure incurred during the year.
14. The interest, if any, to be received on overdue payments for the sale of energy, and advances given to the staff, suppliers etc. is being accounted for as and when actually received and not on the basis of accrual.
15. Expenses or income related to earlier years incurred or realised during the current year have been shown under the heading "Prior Period Adjustments" only if the amount involved is more than Rs. 5000/- in each case. However, the difference in sales revenue for January to March of each previous year, on account of revision of tariff rate based on actual generation during calendar year, has not been taken as prior period adjustment.
16. The liability, if any, on account of reimbursement of deficit of Employees Provident Fund Trusts are accounted for as and when the amounts are paid to the Trusts.
17. In operational projects, where the construction activity is still continuing, the common service expenses have been primarily allocated on the basis of estimated services rendered to/benefit derived by each activity i.e. construction/operation.



## AUDITORS' REPORT

### To the Members of National Hydroelectric Power Corporation Limited.

We have audited the attached Balance Sheet of National Hydroelectric Power Corporation Limited as at 31st March, 1986, and the Profit and Loss Account for the year ended on that date, annexed thereto, in which are incorporated the accounts of the projects/units audited by the branch auditors.

- I. As required by the Manufacturing and other Companies (Auditors' Report) Order, 1975, issued by the Company Law Board in terms of Section 227 (4A) of the Companies Act, 1956, we enclose in the annexure to this report, a statement on the matters specified in paragraphs 4 & 5 of the said order.
- II. Subject to our comments in the annexure referred to above, we report as under:—
  1. We have obtained all the information and explanations, which to the best of our knowledge and belief, were necessary for the purpose of our audit;
  2. In our opinion, proper books of accounts, as required by law, have been kept by the company, so far as appears from our examination of the books and proper returns, adequate for the purpose of audit, have been received from the projects/units not visited by us;
  3. The reports of the branch auditors, in respect of projects/units not audited by us, have been received and the same have been considered and relied upon while preparing our report;
  4. The Balance Sheet and the Profit & Loss Account dealt with by this report are in agreement with the books of accounts and returns;
  5. In our opinion, and to the best of our information and according to the explanations given to us, the said accounts together with the Accounting Policies and Explanatory Notes forming part thereof, and subject to:
    - i) no provision has been made for loss arising out of collapse of a portion of tunnel in the year 1983 at Loktak Project, the estimated cost of which is Rs. 71.54 lakhs;
    - ii) no provision having been made for losses arising out of theft/shortages/breakages/damages valued at Rs. 72.64 lakhs and mentioned in Note No. 2 below the statement on incidental expenditure during construction and no adjustment having been made for Rs. 10.83 lakhs worth of material short received/damaged at Jeypore-Talchar Transmission Project which is included in capital work in progress and is replaceable by the contractor;
    - iii) inter-unit transfer/supense account shows a net figure of Rs. 4.39 lakhs in respect of which adjustments are yet to be made, out of which Rs. 1.28 lakhs pertains to the earlier year.
    - iv) accounting policy No. 2 regarding provision of liability for imported equipment services, accounting policy No. 9(b) regarding the provision on losses arising out of surplus stores and accounting policy No. 13 regarding allocation of remuneration to surplus labour at operational projects amounting to Rs. 336.32 lakhs to the cost of various non-operational projects resulting in the over-statement of the profit for the year by that amount;
    - v) loans and advances given to Government Departments, contractors, suppliers, staff, departments, are subject to confirmation/reconciliation pending receipt of accounts/verified bills. The effect on various account heads and of amount cannot be quantified.
    - vi) North-Eastern allowance paid to the employees with effect from 1st November, 1983 has been charged to Capital Works in progress and revenue accounts under respective heads. The amount relating to previous years has not been quantified and separately stated;
    - vii) no provision has been made for accrued liability of bonus, if any, due under the payment of Bonus Act, 1965 as amended till date;

viii) Rs. 143.56 lakhs charged to incidental expenditure during construction on account of rent for residential building (Net) and for office building also includes the amount of commission paid to property agents for the services rendered for hiring the accommodation. The amount of such commission has not been quantified. The subsidiary books/registers shown to us are subject to reconciliation with the control account in the general ledger;

ix) Bank reconciliation statement at the Corporate Office has revealed that adjustments/rectifications of excess/short debits/credits by the bank/Corporate Office including such debits and credits pertaining to the period prior to 31st March, 1985, are pending reconciliation;

x) at the time of closing of Devighat Project assets including inventory valued at Rs. 17,27,192.78 were reported to have been handed over to N.R.E.P. The details for the same alongwith the location of each asset is not on record;

xi) no amount has been provided for liability, if any, that may arise on account of following two agreements entered with the OSEB for which only provisional amount has been paid/adjusted:—

1. Sale of Jeypore-Talcher Transmission Project—amount paid—Rs. 762 lakhs against original claim of Rs. 821.68 lakhs;
2. Construction Management charges for the Project—amount paid—Rs. 71,77,445.00;

The liability of Rs. 42,02,722.00 on account of construction management charges has been reduced by adjusting the same against the dues of a fabricator/contractor on account of materials returned/supplied to OSEB, the receipt of which has not been confirmed by OSEB.

The Corporation has so far not taken possession of all records/documents/title deeds;

xii) 199.450 MT of cement was reported to have been received at the Project site Jeypore-Talchar, but the same has not been taken on stock;

xiii) loans and advances include Rs. 578.37 lakhs being cost of conductors stored at suppliers' works, at Jeypore-Talchar;

xiv) pre-fabricated modules worth Rs. 34 lakhs in the Tanakpur HE Project have not been capitalised;

xv) fixed assets shown separately in the earlier year under the account heads "residential and non-residential buildings" and "office furniture & fixture" and "office equipment—other appliances" have respectively been clubbed. it is observed that all the fixed assets of the Corporation are not covered under insurance;

xvi) no provision on account of liability of Income tax, if any due, has been made in the accounts as, in the opinion of management, there is no taxable income;

xvii) Rs. 53.85 lakhs included under the head "loans and advances" represents the amount of expenditure incurred on the reported abandoned/investigation project to be recovered to the extent of net balance after transfer/ disposal of assets.

xviii) in respect of Koel Karo Project payment made for establishment cost of Directorate, Land Acquisition and Rehabilitation, Government of Bihar, towards land acquisition amounting to Rs. 44,41,190.00 till date has been taken into incidental expenditure during construction during the year;

xix) shortage of 226.36 MT of Imported billets valued at about Rs. 8.75 lakhs has not been adjusted in Accounts. Further 27 wagons of the above material is pending weighment.

xx) Refund of Custom Duty of Rs. 1.95 crores has not been taken in accounts on account of reduction in rate of custom duty in respect of Imported Equipment for Chamara Project pending reconciliation.



xxi) NOTES

- No. 1 (a) which includes in the amount of Contingent Liabilities a sum of Rs. 198.93 lakhs towards productivity linked incentive, pending decision of the Government;
- No. 2 regarding provision of royalty payable to Himachal Pradesh Government against their claim of sharing of profits;
- No. 3 regarding accounting for the cost of land on the basis of provisional/initial payment and non-completion of legal formalities for transfer of title of land to the Corporation. The period of lease in the case of Dulhasti HE Project has been taken as 99 years;
- No. 5 regarding non-completion and non-reconciliation of priced stores ledgers maintained at the different Projects and the adoption of the general ledger balances as the value of inventory;
- No. 6 regarding the adoption of provisional rates for the sale of power to Delhi Electric Supply Undertaking; Himachal Pradesh State Electricity Board and the States of Assam, Nagaland and Manipur;
- No. 7 regarding the amount shown as advance amounting to Rs. 8.74 lakhs in Baira Siul Project for which material has been received and partly consumed not taken into account;
- No. 9 (a) regarding non-reconciliation of various jobs and credit balances appearing under advances to suppliers, (b) & (c) sundry creditors and other parties and claim amounting to Rs. 3.55 lakhs lodged with insurance companies not accounted for in accounts and non-reconciliation/adjustment of staff/division advances of Rs. 7.78 lakhs.

give the information required by the Companies Act, 1956 in the manner so required and give a true and fair view;

- i) in the case of Balance Sheet, of the state of affairs of the Corporation as at 31st March, 1986;
- ii) in the case of Profit & Loss Account, of the Profit of the Corporation, for the year ended on the date.

For V. MALIK & ASSOCIATES  
Chartered Accountants

(VIPIN MALIK)  
PARTNER

PLACE : NEW DELHI

Dated : 25th September, 1986

## ANNEXURE TO THE AUDITORS' REPORT

### Referred to in our report of even date.

- A. i) The Company has maintained records for a major portion of Fixed Assets. The records maintained do not show situation/utilisation details in some cases. The management has not conducted physical verification of fixed assets at Tanakpur, Baira Siul, Loktak, Chuka, Corporation Office, Bombay & Calcutta Liaison Offices and as such we are unable to comment about the discrepancies, if any;
- ii) Fixed Assets have not been revalued during the year;
- iii) Physical verification of stores and spare parts have been conducted during the year except at Baira Siul, Jeypore-Talchar Transmission System where all spares, stores records, if any, have been maintained by the agent of the Company only. Adjustments in some cases have not been made in respect of stores issued or received for which reconciliation is pending. The value of inventory is as per the general ledger since price store ledgers have not been completed and reconciled;
- iv) The Corporation has not taken any loans secured or unsecured from companies, firms or other parties listed in the register maintained under sections 301 and 370(1-C) of the Companies Act, 1956;
- v) The Corporation has given advances in the nature of loans to the employees of the Corporation and contractors who are generally repaying the principal amounts as stipulated and are also generally regular in making payment of interest.
- vi) In our opinion and according to the information and explanation given to us, there are adequate internal controls, procedures commensurate with the size of the Company and the nature of its business with regard to purchase of stores, raw materials including components, plant and machinery, equipment and other assets, but the procedures laid down need to be strictly followed;
- vii) According to the information and explanation given to us, no purchases have been made during the year, of stores and spare parts or components exceeding Rs. 10,000/- in value for each type, from firms or companies or other parties in which the Directors are interested;
- viii) As explained to us, unserviceable or damaged stores and raw materials are determined and provisions, if any, are made at the time of disposal of such stores as laid down in Accounting Policy No. 9 (b);
- ix) The company has not accepted any deposits from the public;
- x) According to information and explanation given to us, reasonable records have been maintained by the Company for sale and disposal of scrap of some projects;
- xi) The Company has an internal audit system in operation but the same is not commensurate with the size of the Company and the nature of its business as internal audit has not been conducted in some of the units during the year;
- xii) Maintenance of cost records has not been prescribed by the Central Government under section 209(1) (d) of the Companies Act, 1956;
- xiii) Provident Fund dues have been deposited within the stipulated time with the NHPC Employees Provident Fund Trust.



B. In respect of agency works/deposit work;

- i) The Company has a reasonable system of recording receipts, issues and consumption of stores and materials which also provides for a reasonable allocation of the material and man-hours consumed to relevant projects;
- ii) There exists a reasonable system of authorisation at proper levels with necessary control on the issue of stores and allocation of stores and labour to jobs. The internal control system needs strengthening considering the size of the Company and nature of its business.

For V. MALIK & ASSOCIATES  
CHARTERED ACCOUNTANTS

PLACE : NEW DELHI  
Dated : 25th September, 1986

(VIPIN MALIK)  
PARTNER

### **Comments of the Comptroller and Auditor-General of India Under Section 619(4) of the Companies Act, 1956**

I have to state that the Comptroller and Auditor-General of India has no comments upon or supplement to the Auditor's report, under Section 619(4) of the Companies Act, 1956, on the accounts of National Hydroelectric Corporation Ltd., New Delhi for the year ended 31st March, 1986.

New Delhi  
Date : 29th September, 1986.

(N. SUKUMARAN)  
Member, Audit Board & Ex-Officio  
Director of Commercial Audit  
New Delhi.

**Review of accounts of National Hydroelectric Power Corporation Limited for the year ended 31st March, 1986 by the Comptroller and Auditor-General of India.**

**1. FINANCIAL POSITION**

The Table below summarises the financial position of the Company under broad headings for the last three years.

	(Rs. in lakhs)		
	1983-84	1984-85	1985-86
<b>Liabilities</b>			
(a) Paid-up Capital (including shares application money pending allotment)	22,044.03	31,287.66	48,048.12
(b) Reserves & Surplus	2,344.74	2,344.74	4,142.16
(c) Borrowings			
(i) From Govt. of India	13,714.64	16,083.16	18,177.56
(ii) From other Sources	—	1,404.79	3,595.93
(d) Trade dues and other current liabilities (including provision)	4,360.57	5,684.43	5,930.33
	<u>42,463.98</u>	<u>56,804.78</u>	<u>79,894.10</u>
<b>Assets</b>			
(e) Gross block	26,552.00	29,639.06	33,716.03
(f) Less: Depreciation	3,088.54	2,379.44	3,355.82
(g) Net fixed assets	23,463.46	27,259.62	30,360.21
(h) Capital Work-in-Progress	3,321.02	11,653.74	22,972.36
(i) Current Assets, Loans & Advances	13,420.15	17,781.61	26,537.48
(j) Investments	—	—	—
(k) Miscellaneous expenditure & Losses	2,259.35	109.81	24.05
	<u>42,463.98</u>	<u>56,804.78</u>	<u>79,894.10</u>
(l) Capital Employed	32,523.04	39,356.80	50,967.36
(m) Net Worth	<u>22,129.42</u>	<u>33,522.59</u>	<u>52,166.23</u>

**NOTES**

- Capital employed represents net fixed assets plus working capital.
- Net worth represents paid-up capital plus reserves and surplus less intangible assets.
- Only Baira Siul Project at Surangani (HP) and Loktak Project at Manipur started commercial production w.e.f. 1.4.1982 and June, 1983 respectively and remaining projects are still under construction stage.

**2. CAPITAL STRUCTURE**

**Debt Equity Ratio:-** Debt Equity ratio for the company was 0.62:1 in 1983-84, 0.56:1 in 1984-85 and 0.45:1 in 1985-86.

**3. RESERVES & SURPLUS**

The Reserves and Surplus of Rs. 2344.74 lakhs in 1983.84, 84-85 and Rs. 4142.16 lakhs in 1985-86 amounted to 5.52%, 4.13% and 5.18% of total liabilities respectively and 10.64%, 7.49% and 8.62% of Equity Capital respectively.

**4. LIQUIDITY AND SOLVENCY**

- The percentage of current Assets to total net assets varied from 31.60 in 1983-84 to 31.30 in 1984-85 and to 33.22 in 1985-86.
- The percentage of current Assets to Current Liabilities (including provisions) varied from 307.76 in 1983-84 to 312.81 in 1984.85 and to 447.49 in 1985.86.
- The percentage of quick Assets (Sundry Debtors, Loans and Advances, Cash & Bank balance) to current liabilities (excluding provisions) increased from 253.49 in 83.84 to 285.21 in 84-85 and to 371.07 in 1985-86.



## 5. WORKING CAPITAL

The working capital (current assets, loans & advances less trade dues & current liabilities excluding provisions for gratuity) of the company at the close of each of the three years ending 31st March, 1986 amounted to Rs. 9059.58 lakhs, Rs. 12097.18 lakhs and Rs. 20607.15 lakhs respectively. The working capital as on 31.3.86 was financed through loans from Government of India and from other sources.

## 6. SOURCES AND USES OF FUNDS

Funds amounting to Rs. 2773.80 lakhs from internal sources (reserves, depreciation & provisions) and Rs. 21291.90 lakhs from other sources were utilised during the year 1985-86 as shown below:

	(Rs. in lakhs)
Gross block	4076.97
Capital work-in-progress	11318.62
Current Assets, Loans & Advances, Investment & Misc. expenditure to the extent not written off	8670.11
	<u>24065.70</u>

## 7. WORKING RESULTS

The profit/(loss) incurred by the company for the last 3 years were as follows:-

	Profit/(loss) for the year (Rs. in lakhs)	Percentage of profit/(loss) to paid-up capital
1983-84	(650.78)	(2.95)
1984-85	2145.58	6.86
1985-86	1879.18	3.91

## 8. COST TRENDS

The table below indicates the percentage of cost of sales to sales during the last three years:-

	(Rs. in lakhs)		
	1983-84	1984-85	1985-86
1. Sale excluding excise duty	2361.73	3549.69	4742.77
2. Less Profit/(Add loss) during the year	+ (650.78)	(-)2145.58	(-)1879.18
3. Cost of sales	3012.51	1404.11	2863.59
4. Percentage of cost of sales to sales.	127.56	39.56	60.38

## 9. PRODUCTION PERFORMANCE

The value of production for the last three years is worked out below:-

	(Rs. in lakhs)		
	1983-84	1984-85	1985-86
1. Sales	2520.68	3645.26	4742.77
2. Closing stock of finished goods and work-in-progress	—	—	—
3. Opening stock of finished goods & work-in-progress	—	—	—
4. Value of production (1+2-3)	2520.68	3645.26	4742.77

The percentage of value of production to net worth varied from 11.39 in 1983-84 to 10.87 in 84-85 and 9.09 in 1985-86. The percentage of value of production to total net assets of the company varied from 5.94 in 1983-84 to 6.42 in 1984-85 and 5.94 in 1985-86.

## 10. INVENTORY & PRODUCTION

The following table indicates the position of inventory and its distribution at the close of the last three years:-

	(Rs. in lakhs)		
	1983-84	1984-85	1985-86
Stores & Spares Parts	2366.49	1568.96	4531.54

## 11. SUNDRY DEBTORS

The following table indicates the volume of book debts and sales for the last three years:-

As on	Total book debts considered good	(Rs. in lakhs) Sales	Percentage of debtors to Sales
31st March, 1984	2536.37	2520.68	100.62
31st March, 1985	3521.97	3645.26	96.62
31st March, 1986	4843.25	4742.77	102.12

The sundry debtors represented 12.25 months sales in 1985-86 as against 11.59 in 1984-85 and 12.07 in 1983-84. Debts of Rs. 11.73 crores were outstanding for more than one year as on 31.3.85.

New Delhi

Dated : 29th September 1986.

(N. SUKUMARAN)  
Member, Audit Board  
and Ex-Officio Director  
of Commercial Audit (III)  
New Delhi



# ANNEXURE—II

## INFORMATION REQUIRED UNDER SECTION 217 (2A) OF THE COMPANIES ACT, 1956 READ WITH COMPANIES (PARTICULARS OF EMPLOYEES) RULES, 1975.

Name & Designation	Remuneration (Rs.)	Nature of employment (Contractual or otherwise)	Qualification & Experience	Date of commencement of employment in NHPC	Age (Years)	Last employment held
1	2	3	4	5	6	7
(A) Particulars of employees employed throughout the financial year who were in receipt of remuneration not less than Rs. 36,000/- p.a.						
S/Shri Abbey, V.K. Dy. Manager	45,031	Regular	B.Sc. Engg. (Mech.) (15 years)	12.8.81	36	Resident Engineer, Western India Erectors Ltd., Pune.
Aggarwal, A.B. Asstt. Manager	48,385	Regular	B.Sc. Engg. (Mech.) (8 years)	6.2.79	28	—
Aggarwal Abhinav Asstt. Manager	44,133	Regular	B.Sc. Engg. (Electronics-Telecommunications) (7 years)	13.11.78	29	Supervisor, Salal H.E. Project, Govt. of India.
Aggarwal, A.K. Dy. Manager	54,651	Regular	B.A., PG Dip. in Pers. Mngt. & Labour Welfare (15 years)	18.2.81	36	Sr. PAO., Cement Corporation of India Ltd.,
Aggarwal, A.K. Engineer	55,043	On deputation from Haryana Irrigation Department	B.E. (Civil) (10 years)	27.9.79	31	A.E., Haryana Irrigation Department
Aggarwal, A.R. Sr. Manager	62,884	Regular	B.E. (Elect.) (14 years)	18.6.77	38	A.E., U.P.S.E.B.
Aggarwal, S.K. Dy. Manager	61,420	Regular	B.Tech. (Elect.) (13 years)	13.6.80	38	A.E., Military Engg. Services
Aggarwal, S.K. Asstt. Manager	39,655	Regular	B.Sc. Engg. (Civil) (9 years)	20.8.79	31	Design Asstt., Baira Siul Project, Govt. of India.
Alam, M.A. Asstt. Manager	42,235	Regular	B.Sc. Engg. (Elect.) (4 years)	1.5.81	28	—
Amar Nath Sr. Manager	59,206	Regular	B.A., SAS (29 years)	20.09.76	54	Section Officer, Indian Audit & Accounts Deptt.
Amrik Singh Manager	50,909	On deputation from PDD, J&K.	AMIE (27 years)	10.08.84	52	Tech. Officer to CE, PDD, J&K.
Anantha, A. Asstt. Manager	51,653	Regular	B.E., (Mech.) (8 years)	06.06.77	31	AE, Haryana Irrigation Department.
Apparao, Y.N. Manager	50,799	Regular	B.E. (Civil) M.E. (Hydropower), (17 years)	01.08.77	40	Asstt. Engineer, CWC
Arora, V.K. Asstt. Manager	47,907	Regular	B.Sc., ACA (9 years)	04.10.78	32	C.A., Vishal Private Ltd. New Delhi.
Arun Kumar Asstt. Manager	43,498	Regular	B.Sc. Engg. (Civil) (13 years)	21.5.84	35	A.E., HPSEB
Ashok Kumar Asstt. Manager	36,869	Regular	B.Sc. Engg. (Civil) (7 years)	22.05.79	31	GTA (Civil), HSEB.
Atluri Hemalatha Asstt. Manager	45,137	Regular	B.Tech. (Civil) (8 years)	19.05.84	31	Asstt. Ex. Engineer A.P. Irrigation Deptt.
Atta Mohd. Manager	56,872	On deputation from PWD, J&K	B.E. (Civil) (25 years)	4.01.84	51	Executive Engineer, PWD, J&K.
Azad, S.K. Asstt. Manager	45,003	Regular	B.A. (Hons.) (12 years)	16.5.81	45	Section Officer, AGCR.
Bahadur, A.K. Dy. Manager	47,548	On deputation from U.P.S.E.B.	M.Sc. Engg. (Elect.) (12 years)	02.11.79	37	Asstt. Engineer, U.P.S.E.B.
Bajaj, V.M. General Manager	83,677	Regular	B.E. (Civil) (30 years)	10.05.79	53	Director (U.T.), CWC.
Baldev Singh Dy. Manager	56,752	On deputation from PWD, J&K.	B.E. (Mech.) (19 years)	27.12.77	43	Executive Engineer Lower Jhelum Hydel Project, J&K.
Balmukund Manager	58,930	Regular	B.Sc., Engg. (Mech.) (15 years)	16.12.78	37	Asstt. Engineer, EIL.

1	2	3	4	5	6	7
Bandopadhyaya, M.R. Sr. Manager	67,735	Regular	M.Sc. (Applied Geology) (24 years)	29.12.80	49	Geologist (Senior), Geological Survey of India.
Banerjee, P.K. Dy. Manager	46,054	Regular	B.Sc., Engg. (Mech.) (9 years)	09.09.77	33	Officer Trainee, IOC.
Banerjee, P.P. Manager (Finance)	51,913	Regular	B.Com., AICWA (24 years)	10.04.84	48	Chief Accountant, Sadik Industrial & Trading Co., UAE.
Bansal, L.K. Dy. Manager	49,580	Regular	B.Sc. Engg (Civil), M.E. (Civil), MBA (8 years)	16.05.77	32	—
Bansal, L.R. Asstt. Manager	42,037	Regular	B.E. (Civil) (5 years)	01.05.81	28	Site Engineer, M/s. Om Prakash Baldev Krishan Engineers & Contractors.
Basu, Manoj Geologist	39,731	Regular	M.Sc. (Applied Geology) (7 years)	11.10.82	33	Geologist, SWRC, Ground Water Department, Rajasthan.
Bedi, S.S. Asstt. Manager	44,727	On deputation from M/s. NPCC Ltd.	B.Sc. Engg. (Mech.) (10 years)	27.07.84	31	Asstt. Engineer, NPCC Ltd.
Bhalla, S.N. Manager	48,633	Regular	B.A. (17 years)	30.11.79	51	Research Officer, Central Vigilance Commission.
Bhamrah, S.S. Dy. Manager	44,686	Regular	A.M.I.E. (Elect.) (21 years)	13.08.77	51	Project Engineer, BSL Project.
Bhandari, S.P. P.S.	42,917	Regular	B.A. (26 years)	30.06.79	45	Steno, Director General of Civil Aviation.
Bhardwaj, Dr. S.C. Sr. Medical Officer	45,820	Regular	M.B.B.S. (10 years)	15.12.78	39	Asstt. Medical Officer, Northern Railways
Bhardwaj, S.R. Sr. Manager	61,461	Regular	M.A. (Eng.), Diploma in Journalism, Diploma in Marketing and Sales Mgt. (25 years)	11.09.81	43	Public Relations Officer, National Fertilizers Ltd.
Bhargava, Ashok Kumar Engineer	37,571	Regular	B.E. (Elect.) (4 years)	15.02.82	25	Engineer (Trainee) M/s. Bajaj Electrical Ltd.
Bhargava, D.P. Asstt. Manager	60,756	Regular	B.E., (Elect.) (7 years)	20.02.79	29	—
Bhargava, P.K. Asstt. Manager	44,545	Regular	B.E. (Elect.) DIIT (Power Appl. & Systems), Diploma in MM (6 years)	16.06.79	28	—
Bhatia, R.K. Accounts Officer	42,732	Regular	National Dip. in Commerce, SAS (24 years)	24.12.76	50	Accountant, Railway Board, M/o Railway.
Bhatia, V.S. Office Supdt.	46,758	Regular	B.A. (34 years)	01.10.77	56	Assistant, Department of Power, Govt. of India.
Bhatnagar, Amod S.P.S.	53,928	Regular	I.Sc. (23 years)	23.07.76	44	Stenographer, UPSEB.
Bhatnagar, Dr. M.S. Sr. Medical Officer	45,529	Regular	M.B.B.S. (19 years)	27.08.81	44	Medical Officer, Neoli Sugar Mills, Allahabad.
Bhatnagar, Shashank Asstt. Manager	40,564	Regular	M.Sc. (Geology) (12 years)	06.04.85	35	Geologist, G.S.I.
Bhatt, N.D. Asstt. Manager	47,125	Regular	B.Com., SAS (28 years)	18.07.77	50	Section Officer, Office of Chief Auditor Central Railway.
Bhattacharjee, J. Dy. Manager (F&A)	45,169	Regular	B.Sc., AICWA, SAS (31 years)	24.01.80	50	Accounts Officer, IFC, Govt. of Manipur.
Bhattacharjee, M.N. Sr. Manager	72,652	Regular	M.A. (Eco.), PG Diploma in Pers. Mgt. (32 years)	30.12.81	54	Asstt. Personnel Manager, Bharat Aluminium Co. Ltd.
Bhattacharjee, P. Asstt. Manager	37,951	Regular	M.Sc., MBA (10 years)	12.03.85	38	Sr. P.O., BHEL.
Bhattacharya, T.J. Engineer	39,112	Regular	B.E. (Civil) (8 years)	09.11.82	34	Asstt. Engineer, Meghalaya State Electricity Board.
Bhugra, R.L. Accounts Officer	47,744	Regular	B.A., SAS (29 years)	10.06.77	54	Accountant, Ministry of Railways.
Binepal, A.S. Manager	47,499	Regular	B.E. (Mech.) (18 years)	19.05.78	45	Shift Engineer, Beas Project, Talwara.



1	2	3	4	5	6	7
Bisht, B.S. Dy. Manager	42,910	Regular	B.E. (Civil) (10 years)	16.05.77	31	Engineer (Civil), H.C.C. Ltd. Bombay.
Biswas, A.K. Asstt. Manager	44,595	Regular	B.E. (Civil) (12 years)	21.10.82	37	A.E., Deptt. of Agriculture, West Bengal.
Boni, O.N. Sr. Manager	46,942	Regular	B.Sc. Engg. (Civil) (25 years)	29.07.77	46	Executive Engineer, Ministry of Energy.
Brijesh Kumar Sr. Manager	47,925	Regular	M.A. (Pol. Sc.), B.L. M.A. (LSW) (20 years)	12.07.78	47	Personnel Officer, Bokaro Steel Ltd.
Chhabra, C.P. Chief Engineer	79,852	On deputation from PSEB	B.E. (Elect. & Mech.) (33 years)	08.08.83	56	Suptg. Engineer, Bhakra Beas Management Board
Chadha K.C. Dy. Manager	49,226	Regular	B.Sc. Engg. (Elect.) (10 years)	05.08.77	34	Supervisor, CEA.
Chadha N.K. Accounts Officer	41,067	Regular	B.A., AICWA (5 years)	07.06.82	34	Junior Manager (F&A) Rourkela Steel Plant.
Chadha, Dr. R.K. Asstt. Chief Medical Officer	58,170	Regular	M.B.B.S. (18 years)	09.09.80	40	Medical Officer, Min. of Health, Govt. of India.
Chakraborty, A.C. Dy. Manager	38,530	Regular	B.A., SAS, (33 Years)	03.03.76	53	Section Officer, A.G., Manipur.
Chakraborty, D. Dy. Manager	53,403	Regular	M.Com., AICWA (15 years)	09.06.78	49	Sr. Accountant, M/s. NMDC Ltd. Bacholi (MP).
Chakravorty, S. Asstt. Manager	44,087	Regular	B.Sc. Engg. (Elect.) (13 years)	01.01.77	36	Trainee Engineer, WBSEB
Chaku, B.L. Dy. Manager	45,121	Regular	B.Sc., S.A.S. (29 years)	16.08.80	53	Accounts Officer, Office A.G., J&K.
Chandra Shekhar, P. Asstt. Manager	48,188	Regular	B.E. (Elect.) (11 years)	27.01.83	38	Dy. Engr., B.E.L. Bangalore.
Chandrasekaran, A. Manager	61,891	Regular	B.E. (Civil) (16 years)	20.11.78	41	A.E., PWD, Madras.
Charian Mathew Engineer	37,051	Regular	B.Sc. Engg. (Elect.) (3 years)	15.02.82	26	—
Choudhuri N.K. Dy. Manager	52,986	Regular	A.M.I.E. (Civil) (16 years)	15.07.81	39	Resident Engr. NBCC
Chanana, A.K. Asstt. Manager	50,813	Regular	B.E. (Elect.) (14 years)	31.12.82	39	Asstt. Engineer, PDD, (J&K)
Chauhan, D.S. Asstt. Manager	37,578	Regular	B.Sc., LL.B. D.L.L., L.W. & PM, M.A. (Pub. Admn.) (8 years)	17.01.85	32	Labour Officer, H.C.C. Ltd.
Chauhan, S.K. Asstt. Manager	44,992	Regular	B.E. (Civil) (10 years)	11.09.78	33	SO, B.S. Project
Chauhan, Maj. S.S. Manager	55,991	Regular	Degree in Civil Engg. (21 years)	19.03.79	42	Major in Indian Army.
Chopra, J.C. Private Secretary	46,913	Regular	Matric (31 years)	19.05.79	50	P.A., M/O Energy, New Delhi.
Chopra, M.L. Sr. Manager	63,963	Regular	B.A., P.G. Diploma in Public Administration (26 years)	27.11.81	54	Liaison Officer, Chukha Hydel Project, Bhutan.
Chopra, Opinder Dy. Manager	52,181	Regular	B.A., P.G. Diploma in Labour Laws, Lab. Welf & Pers. Mgt. (21 years)	19.04.79	38	Office Suptd. (Pers.) BALCO.
Choudhury, N.C. Accounts Officer	46,383	Regular	B.A., SAS (22 years)	01.06.81	45	Section Officer, O/o A.G., Meghalaya
Choudhury, B.K. Dy. Manager	50,734	Regular	B.E. (Civil) (20 years)	18.11.81	39	Executive Engineer, PWD, Govt. of Tripura.
Choudhury, Dr. G.H. Sr. Medical Officer	50,265	On deputation from Ministry of Health & Family Welfare	M.B.B.S. (15 years)	15.05.78	40	Medical Officer, Ministry of Health & Family Welfare.
Chouhan, Iswar Chand Land Acquisition Officer	41,169	On deputation from PWD (HP)	B.A. (9 years)	23.04.82	52	G.A. to SDM Chamba.
Dandecha, B.V. Asstt. Manager	46,900	Regular	B.E. (Mech.) (7 years)	22.02.79	34	—
Darde, P.N. Dy. Manager	50,439	Regular	B.E. (Civil), M.Tech. (Water Resources) (18 years)	30.01.80	45	Lecturer, Delhi College of Engineering.

1	2	3	4	5	6	7
Darbari, H.L. Dy. Manager	36,187	Regular	M.E. (Civil) (16 years)	12.09.81	39	Asstt. Engr, PWD, J&K.
Das, Felix Dy. Manager	48,373	Regular	B.E. (Elect.) (15 years)	10.12.77	41	S.D.O., Beas Construction Board.
Dass Sharma, B.K. Manager	55,182	On deputation from HPSEB	B.E. (Mech.) (20 years)	04.04.84	45	S.E., HPSEB.
Das, Srikanta Dy. Manager	50,135	Regular	B.E. (Civil), P.G. Dip. in Water Resources and Development (16 years)	24.03.81	39	S.D.O., Irrigation Deptt., Govt. of Assam.
Deorari, B.D. Dy. Manager	50,303	Regular	M.A. (12 years)	23.05.81	48	Dy. Manager (Proc.), DSIDC
Dhillion, H.S. Dy. Manager	54,524	On deputation from HPSEB	Dip. in Civil Engg., AMIE, (24 years)	23.05.81	46	A.E.E., H.P.S.E.B.
Dhar, K.K. Asstt. Manager	42,549	On deputation from PWD, J&K	Dip. in Mech. Engg., (31 years)	20.02.84	53	Executive Engineer, PWD, J&K.
Dhar, S.K. Asstt. Manager	58,682	Regular	B.E. (Mech.) (18 years)	27.01.83	42	XEN, PWD, J&K.
Divatia, (Miss) E. Chief Engineer	79,645	Regular	B.E. (Civil), M. Tech. (27 year)	22.3.79	49	Deputy Director, CWC
Dodeja, S.K. Manager	51,830	Regular	AMIE (Mech.) AMACSI (17 years)	12.10.78	37	AEE, Border Roads Organisation.
Dubey, S.N. Engineer	39,892	Regular	B.Sc. Engg. (Elect.) (6 years)	17.06.82	32	Asstt. Engineer, Meghalaya State Elect. Board.
Dutta, K.P. Admn. Officer	37,235	Regular	B.Sc., P.G. Dip. in PM&IR, P.G. Dip. in Public Relations (10 years)	15.03.82	32	Captain in Army.
Dwivedi, K.N. Asstt. Manager	44,348	Regular	M.A. (Eco.), MSW (19 years)	22.12.81	45	Asstt. Office Supdt. BHEL.
Dwivedi, M.G. Manager	55,687	Regular	M.E. (Elect.) (14 years)	13.3.78	40	Asstt. Engineer, U.P.S.E.B.
Earnest Tirkey Asstt. Manager	47,885	Regular	M.A., P.G. Dip. in P.M. (9 years)	18.03.83	35	Labour Welfare Officer, Bihar State Electricity Board.
Easwar, I. Asstt. Manager	47,956	Regular	M.E. (Soil Mech. & Foundation) (6 years)	01.02.80	29	Engineer, Mody & Associates
Gagroo G.M. Land Collector	42,740	deputation from Land & Rev. Deptt., (J&K)	Kashmir Administrative Services 30 years	27.07.81	50	Asstt. (Commerce), Land, & Rev. Department, J&K.
Gandotra, B.M. Dy. Manager	41,730	On deputation from Irrigation Deptt. J&K.	B.Sc. Engg. (Civil) (18 years)	1.12.75	45	Asstt. Engineer, Irrigation Deptt., J&K.
Gandotra, S.K. Asstt. Manager	44,986	On deputation from J&K, Rural Development Works	B.E. (Civil) (18 years)	14.11.84	40	Executive Engineer, Rural Development Works, J&K.
Gandotra, V.K. Asstt. Manager	47,021	On deputation from J&K, PWD	B.E. (Mech.) (18 years)	20.02.84	42	A.E., Irrigation Division, PWD, J&K
Gangopadhyaya, A.K. Sr. Manager	68,622	Regular	B.E. (Civil) (20 years)	10.09.81	40	Executive Engineer, PWD, Government of Goa, Daman & Diu (Panaji).
Garg, H.R. Dy. Manager	53,509	On deputation from PWD (Irrigation), Punjab	A.M.I.E. (Civil) (21 years)	28.02.80	44	Sectional Officer (Civil), PWD (Irrigation) Punjab.
Garg, S.P. Engineer	40,877	On deputation from CWC	B.Sc. Engg. (Civil) (8 years)	31.03.84	35	Extra Assistant Director, CWC.
Garoo, B.L. Asstt. Manager	36,292	On deputation from Rural Electrification (J&K)	B.Sc. Engg. (Elect.) (16 years)	09.05.83	38	Asstt. Engineer, Rural Electrification Divn., Srinagar.
Gaur, B.N. Photographic Officer	44,030	Regular	Intermediate, Certificate in Photography (22 years)	12.04.79	45	Photographer, Beas Dam, Punjab.
Gautam, P.S. Asstt. Manager	53,801	Regular	B.Sc. Engg. (Elect.) (16 years)	07.08.77	43	Shift Engineer, BSL Project.
Ghosh, L.N. Manager	58,717	Regular	B.Com., M.B.A. (Fin.), Dip. in Budgetary & Fin. Control, P.G. Dip. in Pers. Mgt., Dip. in Data Processing (21 years)	01.10.81	41	Dy. Accts. Manager, MMTC Ltd.



1	2	3	4	5	6	7
Ghosh, M.K. Chief Engineer	67,156	Regular	B.E. (Civil) (25 years)	23.02.79	47	Executive Engr. Border Roads Organisation
Ghosh, N.C. Engineer	47,865	On deputation from PWD, Tripura	Dip. in Elect. Engg. (20 years)	01.01.77	42	Overseer, PWD, Tripura.
Ghyasi, M.R. Asstt. Manager	49,326	Regular	B.Sc., DBA, D.L.L.R., MBA, LL.B. (16 years)	02.02.85	40	Pers. Officer, Modi Rubber Ltd.
Gianchandani, M.L. P.S.	44,161	Regular	B.A. (25 years)	01.06.79	42	Steno, Deptt. of Power, Ministry of Energy
Goel, M.K. Asstt. Manager	44,260	Regular	B.Tech. (Elect.) (6 years)	11.03.80	29	Trainee Engineer, Ralli Chemicals Ltd., Kanpur.
Goela, Y.S. Asstt. Manager	44,860	Regular	B.Sc. Engg. (Elect.) (19 years)	01.01.77	37	—
Gothra, Maj. G.S. Sr. Manager	71,694	Regular	Degree in Engg. (Civil), LL.B. (22 years)	12.03.79	49	Maj. in Indian Army.
Govindarajulu, V. Asstt. Manager	36,894	Regular	B.Tech. (Mech.) (5 years)	09.06.80	31	—
Goyal, J.M. Manager	66,677	Regular	B.A., SAS (Rlys) (34 years)	15.04.78	54	Accounts Officer, NMDC Ltd.
Goyal, P.P. Admn. Officer	47,067	Regular	Matric (32 years)	23.05.80	48	P.A. in CW & PC.
Goyal, T.K. Dy. Manager	53,416	Regular	B.E. Mech., AMIE (C) (18 years)	22.04.81	41	Shift Engineer, Beas Project, Talwara
Gulati, J.K. Asstt. Manager	44,417	Regular	B.A. (Hons.), ACA, (9 years)	16.11.78	35	Accountant, M/s Jenson & Nicholson, New Delhi.
Gulati, Maj. Vinod Sr. Manager	67,457	Regular	AMIE (Mech.) (19 years)	01.03.80	39	Maj. in Indian Army.
Gupta, A.K. Dy. Manager	53,626	Regular	B.E. (Hons.) (Mech.) (9 years)	24.11.77	30	Apprentice (Ind. Engg.) Hindustan Brown Boveri Ltd.
Gupta, A.K. Asstt. Manager	46,340	Regular	B.Sc. Engg. (Mech.) (10 years)	15.05.78	33	Supervisor, Salal Project Government of India.
Gupta, Ashok Dy. Co. Secy.	47,585	Regular	B.Sc. (Hons.), LL.B. DPM, ICWA (Inter), ACS (11 years)	16.11.82	33	Co. Secy., Rajasthan State Seeds Corpn. Ltd., Jaipur.
Gupta, D.K. Engineer	37,754	On deputation from PDD, J&K	B.E. (Mech.) (17 years)	11.09.80	40	AE, PDD, J&K.
Gupta, D.M. Asstt. Manager	50,106	On deputation from J&K.	B.E. (Mech.) (16 years)	1.2.84	40	A.E., J&K. Irrigation Deptt.
Gupta, D.R. Engineer	55,253	On deputation from PWD, J&K	B.Sc., B.E. (Mech.) (18 years)	04.08.81	46	A.E., PWD, J&K.
Gupta, Dr. G.C. Asstt. Chief Medical Officer	58,858	Regular	M.B.B.S. (16 years)	24.04.81	39	Maj. in Indian Army.
Gupta, Gopal Asstt. Manager	48,950	Regular	B.Sc. Engg. (Elect.) (8 years)	19.03.79	30	Supervisor, Salal Project.
Gupta, H.R. Accounts Officer	41,521	Regular	B.Com., LL.B. (32 years)	0.05.81	54	Section Officer, Office of A.C., Simla
Gupta, Dr. J.P. Dy. Manager	46,510	Regular	M.A., Ph.D., Prabhakar (Hons. in Hindi) (33 years)	15.11.78	53	Asstt. Education Officer, Central Hindi Directorate.
Gupta, K.C. Manager	44,572	On deputation from Mech. Engg. Deptt., J&K	B.E. (Mech.) (21 years)	04.06.84	41	S.E., Mech. Engg. Deptt., J&K.
Gupta, K.D. Dy. Manager	39,679	On deputation from PWD, J&K.	B.E. (Civil) (18 years)	07.05.79	42	Engineer, PWD, J&K.
Gupta, M.L. Sr. Manager	78,260	Regular	B.Sc. Engg. (Mech.) (19 years)	29.04.80	41	Dy. Manager, BHEL.
Gupta, Dr. (Mrs.) Manju Sr. Medical Officer	36,371	Regular	M.B.B.S., D.G.O. (12 years)	24.04.81	36	Medical Officer, BHEL.
Gupta, P.K. Dy. Manager	44,536	Regular	B.E. (Civil) (18 years)	10.07.81	42	Asstt. Director., CWC
Gupta, Rakesh Programmer	37,455	Regular	B.E. Hons. (Mech.) (9 years)	24.11.77	30	Apprentice (Ind. Engg.) Hindustan Brown Boveri Ltd.
Gupta, R.C. Dy. Manager	40,024	On deputation from PWD, J&K	B.E. (Mech.) (18 years)	10.08.77	42	Executive Engineer, PWD, J&K.
Gupta, R.K. Asstt. Manager	41,827	Regular	B.E. (Civil) (6 years)	22.05.79	29	—
Gupta, R.K. Engineer	41,033	On deputation from HPSEB	Dip. Engg. (Mech.) (20 years)	20.01.78	44	J.E., MPP&P Government of H.P.

1	2	3	4	5	6	7
Gupta, S.C. Asstt. Manager	41,304	Regular	B.E. (Civil) (8 years)	27.10.77	32	—
Gupta, S.C. Engineer	39,498	On deputation from PWD, J&K	B.E. (Mech.) (12 years)	02.05.83	42	A.E. (Mech.), PWD, J&K.
Gupta, S.P. Dy. Manager	51,168	Regular	B.E. (Civil) (18 years)	07.07.80	42	A.E., Salal Project, Govt. of India.
Gupta, T.C. Asstt. Manager	53,771	Regular	B.Sc. Engg. (Mech.) (7 years)	15.07.78	36	Technical Asstt., Ministry of Energy, Govt. of India.
Gupta, V.K. Manager	76,249	Regular	B.E. (Civil) Hons. (20 years)	10.05.78	42	Dy. Director, Central Hydroelectric Projects Control Board.
Gupta, V.K. Manager	59,839	Regular	B.Sc. Engg. (Elect.) (13 years)	30.01.81	38	Engineer, S.A.E. India Ltd.
Gupta, V.K. Asstt. Manager	49,416	Regular	B.Sc. Engg. (Civil) (6 years)	09.04.79	30	Graduate Engr. Trainee, Indian Oil Corporation.
Gupta, V.P. Dy. Manager	41,910	Regular	M.Sc. Engg. (Mech.) (21 years)	29.05.80	44	AEE, NPCC.
Habbu, P.G. Asstt. Manager	46,473	Regular	B.E. (Civil) (9 years)	16.06.84	30	Engr. (Civil) Karnataka Power Corpn. Ltd.
Handa, A.P. Asstt. Manager	41,446	Regular	B.Com., ACA, (9 years)	11.06.82	31	Dy. Manager (A/cs.) M/s. Nuchem Plastics Ltd.,
Handa, M.K. Dy. Manager	43,721	On deputation from PWD, H.P.	B.Sc. Engg. (Civil) (10 years)	30.12.81	30	A.E., PWD, H.P.,
Harbans Singh Manager	51,726	Regular	B.Sc. Engg. (C), MIE, MICS (19 years)	20.01.79	42	Asstt. Engr. Chukha HE Project Govt. of Bhutan.
Hari Prasad, A. Asstt. Manager	41,814	On deputation from HPSEB	B.Sc. Engg. (Civil) (14 years)	21.05.84	39	Asstt. Executive Engineer, HPSEB.
Harjeet Singh Asstt. Manager	41,980	On deputation from PDD, J&K.	B.E. (Civil) M.E. (WRD) (22 years)	26.09.83	46	XEN, Irrigation Deptt. J&K
Hashia, M.L. Sr. Manager	54,391	Regular	B.E. (Civil) (26 years)	23.07.81	48	Executive Engineer, PWD, J&K.
Hussain, S.M. Dy. Manager	40,761	Regular	B.Sc. Engg. (Civil) (13 years)	14.12.81	36	A.E., Bihar Irrigation Department.
Illawadi, K.S. Sr. Accountant	50,785	On deputation from DACR	B.Sc. LL.B, SAS (15 years)	02.06.83	46	Section Officer, DACR., New Delhi
Iyer, S.G. Dy. Manager	50,198	Regular	MA., Dip. in PM&IR (19 years)	22.12.81	39	Admn. Officer, N.B.C.C.
Jagdish Chander Private Secretary Gr.I	39,760	Regular	B.A. (29 years)	19.05.79	49	Steno, Deptt. of Company Affairs, N. Delhi.
Jaggi, A.L. Chief Engineer	73,987	Regular	B.Sc. Engg. (Elect.) (24 years)	20.01.78	46	Supdtg. Engineer, Baira Siul HE Project, Govt. of India
Jain, S.L. Dy. Manager	45,188	Regular	M.E. (Civil) (15 years)	01.07.80	43	A.E., CWC
Jain, A.K. Chief (Accounts)	85,119	Regular	B.Com., ACA (17 years)	28.11.78	40	Dy. Accounts Manager, IFFCO, New Delhi.
Jain, A.K. Asstt. Manager	44,531	Regular	B.Sc. Engg. (Civil) (5 years)	14.01.81	28	—
Jain, H.C. Asstt. Manager	46,312	Regular	MA. (Pub. Admn.) P.G. Dip. in PM&IR (27 years)	01.06.81	46	Office Supdt., BHEL.
Jain, Jitender Engineer	36,484	Regular	Dip. in Elect. Engg. (14 years)	31.12.80	35	Supervisor, CEA.
Jain, N.C. Dy. Manager	52,513	Regular	B.E. (Civil) (19 years)	25.09.79	44	SDO & ADE, Irrigation Deptt., Govt. of Rajasthan.
Jain, P.K. Dy. Manager	44,328	Regular	B.Sc. Engg. (Elect.) P.G. Dip. in Business Mngt. & Industrial Admn. (12 years)	26.04.77	36	Tech. Asstt., Central Board of Irrigation & Power.
Jain, P.K. Dy. Manager	36,447	Regular	B.Sc. Engg. (Elect.) (12 years)	01.08.77	36	Supervisor, CEA.
Jain, S.K. Engineer	34,229	Regular	B. Tech. (Elect.) (5 years)	12.11.84	29	Engr. (Trainee) Tata Consulting Engrs. Bangalore.
Jain, T.C. Chief Engineer	77,985	Regular	B.Sc. Engg. (Elect.) (30 years)	15.07.77	53	Deputy Director, CEA.
Jain, T.C. S.P.S.	42,910	Regular	B.A. (Hons.) (31 years)	08.06.77	55	P.A., Ministry of Energy.
Jain, V.K. Dy. Manager	46,771	Regular	B.E. (Elect.) (12 years)	01.08.77	35	Section Officer, CEA.



1	2	3	4	5	6	7
Jamwal, S.S. Manager	40,678	Regular	B.E. (Elect.) (17 years)	09.12.75	40	Asstt. Engineer, PDD, J&K
Javeri, C.S. Asstt. Manager	52,207	Regular	B.E. (Elect.) (13 years)	01.09.82	36	Tech. Asstt., CEA.
Jasrotra, C.S. Engineer	37,555	On deputation from PHED (J&K)	B.E. (Civil) (14 years)	22.11.82	44	Asstt. Engr. Public Health Engg. Deptt. (J&K)
Jethwani, J. (Miss) Dy. Manager	51,091	Regular	M.A., P.G. Dip. in Advtg. & PR, P.G. Dip. in Journalism (10 years)	27.07.78	34	Asstt. Products Manager, Modern Bakeries
Jir, P.N. S.P.S.	53,110	Regular	B.A. Diploma in Industrial Relations and Personnel Management (30 years)	19.02.77	52	P.S., Railway Board
Johri, S.K. Manager	47,799	Regular	M.A., M.S.W. (21 years)	20.03.78	45	Asstt. Personnel Officer, Hindustan Steel Works Corpn. Ltd.
Jose, P.C. Manager	54,384	Regular	B.Sc. Engg. (Mech.) (14 years)	24.12.79	39	Extra Asstt. Director, CWC
Joshi, K.B. Accounts Officer	38,182	Regular	M.A. (Econ.), SAS (20 years)	16.10.78	41	J.A.O., C.C.A./CBEL, New Delhi.
Joshi, L.D. Asstt. Manager	45,028	Regular	M.A., SAS (31 years)	12.03.79	53	Section Officer, A.G., H.P.
Joshi, V.K. Chief Engineer	84,549	On deputation from Deptt. of Irrigation, Govt. of U.P.	B.E. (Civil) (33 years)	31.03.79	55	Director, CWC
Juneja, R.K. Asstt. Manager	48,455	On deputation from HPSEB.	B.E. (Civil) (14 years)	01.05.84	36	Executive Engr. HPSEB.
Kaliah, K. Dy. Manager	46,165	Regular	B.E. (Elect.) (13 years)	29.05.81	49	J.E., NGEF Ltd., Bangalore
Kalsi, J.S. Dy. Manager	52,423	Regular	Diploma in Civil Engg., B.A. (29 years)	26.12.78	52	Executive Engineer, HPSEB
Kanwar, B.S. Chief Project Mgr.	55,144	Regular	B.Sc. Engg. (Elect.) (23 years)	26.06.81	44	Executive Engineer, H.S.E.B.
Kanjalia, V.K. Manager	58,758	Regular	B.Sc. Engg., (Elect.) M.Sc. Engg. (16 years)	08.05.79	40	Asstt. Exe. Engr. PSEB
Kapil, A.K. Dy Manager	46,804	Regular	A.M.I.E. (C) Dip. in Civil Engg. (24 years)	10.07.81	43	Asstt. Manager, HPSEB
Kapoor, B.R. Dy. Manager	56,399	On deputation from BCB	B.Sc. (35 years)	19.02.79	56	Asstt. Research Officer, Bhakra Control Board
Kapoor, Kamal Dy. Manager	51,965	Regular	B.Sc. Engg. (Elect.) (12 years)	06.08.77	35	Supervisor, CEA
Kapur, J.N. Dy. Manager	64,961	Regular	M.A., LL.B., SAS (28 years)	07.02.81	56	Audit Officer, Northern Railways.
Kapur, K.K. S.P.S.	46,057	Regular	B.A. (28 years)	01.06.79	46	P.A., Deptt. of Power, M/o Energy
Kapur, V.K. Manager	48,218	Regular	M. Tech. (Civil) (15 years)	07.11.78	40	AEE, Hindustan Prefab Ltd.
Kapur, G.K. Asstt. Manager	41,765	Regular	B.A., SAS (28 years)	20.04.78	52	Section Officer, AGCR
Kapur, Guljit Asstt. Manager	51,433	On deputation from PSEB	B.Sc. Engg. (Elect.) (14 years)	18.04.83	35	AEE, PSEB
Kapur, S.K. Dy. Manager	40,336	Regular	B.A., L.L.M., P.G. Dip. in PM&IR (21 years)	19.02.77	46	Assistant, Ministry of Railway
Karkum, Dilip Asstt. Manager	48,592	Regular	B.E. (Civil) (14 years)	25.07.84	36	Executive Engineer, NPCC
Kashyap, B.R. Dy. Manager	43,467	On deputation from PWD (Punjab)	B.E. (Civil) (17 years)	04.10.79	41	AE, PWD, Punjab.
Kashyap, K.K. Director (Technical)	95,938	Govt. appointment	B.E. (Mech.), B.E. (Elect.) (28 years)	30.08.84	52	Dy. General Manager, BHEL
Koul, B.N. Dy. Manager	49,268	Regular	B.A., SAS (36 years)	02.09.81	55	A.O., Office of AG., J&K

1	2	3	4	5	6	7
Keshari, Balmiki Asstt. Manager	46,184	Regular	B.Sc. Engg. (Civil), M. Tech. (Civil) (20 years)	30.06.84	43	Asstt. Prof., Bihar Public Service Commission.
Khan, I.A. Asstt. Manager	47,970	On deputation from PWD, J&K	B.Sc. BE (Civil) (23 years)	15.02.84	46	Executive Engineer (Civil), PWD, J&K
Khanna, M.N. Manager	43,050	Regular	B.E. (Mech.) (17 years)	27.03.79	39	A.E.E., Border Roads Development Board
Khar, P.N. General Manager	83,058	Regular	B.E. (Civil), M.E., M.I.E., M.I.A.H.R. (30 years)	15.05.78	50	Supdtg. Engineer, Salal HE Project, Govt. of India
Khalganonkar, Sanjay Engineer	42,066	Regular	B.E. (Mech.) (5 years)	14.04.80	28	—
Khastgir, S. Asstt. Manager	44,579	Regular	B.E. (Mech.) (5 years)	08.02.80	31	Graduate Apprentice, The Alkali & Chemical Corporation of Inddia.
Khazanchi, R.N. Manager	43,873	On deputation from PWD, J&K	B.E. (Civil) (21 years)	03.09.83	44	Executive Engineer, PWD, J&K
Khosla, C.P. Dy. Manager	57,128	Regular	B.A., PG. Dip in PM&IR (27 years)	07.09.79	56	Personnel Officer, NTPC
Kholas, K.D. Manager	58,749	On deputation from HPSEB	B.E. (Elect.) (21 years)	05.07.84	46	SE, HPSEB
Khungar, J.N. Sr. Manager	42,711	On deputation from Irrg. Deptt., Govt. of Punjab	B.Sc. Engg. (Civil) (25 years)	06.08.77	46	Executive Engineer, Beas Project.
Kishore, Bhagat Asstt. Manager	42,681	Regular	A.M.I.E. (Mech.) (17 years)	24.01.79	38	Sr. Draftsman, Western Railways.
Kishore Kumar Engineer	42,106	Regular	B.Sc. Engg. (Mech.) (3 years)	12.04.82	26	—
Kochar, J.N. Sr. Manager	50,486	On deputation from Office of D.G. Border Roads	B.A. (26 years)	10.08.81	50	Civilian Office Gr.I, Office of D.G. Border Roads
Kohli Lalit Asstt. Manager	40,870	Regular	B.Sc., PG Dip. in Business Mgmt. (10 years)	29.12.81	32	Sales Officer, U.P. Forest Corporation
Kohli, N.K. Asstt. Manager	49,955	On deputation from PWD, J&K	BE (Civil) (19 years)	21.06.84	43	AE, PWD, J&K
Kotwal, S.L. Manager	49,683	On deputation from PWD, J&K	B.E. (Civil) (21 years)	15.05.78	44	Executive Engineer, Salal H.E. Project, Govt. of India
Krishna, D.N. Asstt. Manager	43,757	Regular	M.E. (Civil) (8 years)	11.02.80	30	Lecturer, M.S. Ramaiah College of Engg., Bangalore
Krishna Mohan Sr. Manager	51,901	Regular	M.A. (Labour & Social Welfare) (22 years)	04.06.78	48	Dy. Mgr. (Personnel), Bharat Coking Coal Ltd.
Krishnamurthi, M. Asstt. Manager	38,896	Regular	B.Sc., ICWAI (15 years)	01.07.79	39	Jr. Accountant, Directorate of Accounts (Postal), Hyderabad
Krishnamurthy M. Sr. Manager	71,327	Regular	B.B. (Elect.), Sr. Dip. in German, Dip. in Russian (21 years)	29.06.81	45	Dy. Mgr., NTPC
Krishnamurthy, M. Asstt. Manager	41,872	Regular	B.E. (Civil) (6 years)	03.03.80	30	—
Krishnamurthy, R. Dy. Manager	60,211	Regular	B.Sc., SAS, AICWA, ACS (Inter) (16 years)	01.07.81	41	Sr. Cost Accountant, Mineral Exploration Corporation Ltd.
Kumar, S.K. Dy. Manager	58,818	Regular	B.Sc. Engg. (Mech.) (16 years)	04.08.77	41	Shift Engineer, B.S.L. Project
Kunjayappan, M.V. Sr. Manager	52,219	Regular	B.Sc. Engg. (Civil) (20 years)	01.01.77	46	Asstt. Executive Engineer, Loktak H.E. Project, Govt. of India
Lal, J.G. Dy. Manager	53,602	Regular	B.Sc., MBA, LL.B. (9 years)	20.12.82	33	Asstt. Trg. Officer, P&D India Ltd, Sindri (Bihar)
Lal, R.P. Dy. Manager	50,296	Regular	B.Sc. Engg. (Elect.) (18 years)	30.11.81	40	A.E.E., UPSEB.
Lalitha, (Mrs.) O.R. Dy. Manager	48,224	Regular	B.E. (Civil) (14 years)	02.06.80	38	Asstt. Engr., Central Water Commission.
Loganathan, N. Sr. Supervisor	36,077	Regular	Dip. in Mech. Engg. (10 years)	01.01.77	35	Supervisor, Loktak Project. Govt. of India.
Lomas, A.K. Dy. Manager	53,321	Regular	B.Sc. Engg. (Mech.), M.A. (Pub. Admn.), MIE (13 years)	08.06.81	34	Excutive Engr., Western Coalfields Ltd., Nagpur.



1	2	3	4	5	6	7
Madan, M.M. Dy. Manager	48,657	Regular	B. Tech. (Civil) (9 years)	18.05.77	31	Asstt. Engr. M.N. Das & Co. (P) Ltd., Bombay.
Madan, R.K. Chief Engineer	78,517	Regular	B.Sc. Engg. (Elect). (22 years)	12.12.79	44	Chief Engineer, M/s. R.S. Steel Works, Bareilly
Madanpotra, C.L. Private Secretary	45,781	Regular	B.A. (22 years)	25.07.77	42	P.A., Ministry of Energy
Mahajan, B.R. Asstt. Manager	44,512	Regular	B.A. (17 years)	11.07.78	51	Section Officer, AG's Office, Jaipur.
Mahajan, S.C. Manager	54,782	On deputation from PSEB	B.E. (Elect.), (18 years)	30.07.84	39	Executive Engineer, P.S.E.B.
Majumdar, A. Dy. Manager	37,596	Regular	B.Sc., SRAS (21 years)	31.8.81	48	Section Officer, O/O Director of Audit, Railways.
Mal, R.D. Admn. Officer	43,402	Regular	Matric (38 years)	25.02.77	57	Tech. Asstt., Ministry of Railways
Malhotra, A.K. Asstt. Manager	47,819	Regular	B.E. (Civil) (5 years)	01.05.80	30	—
Malhotra, B.L. Dy. Manager	53,183	Regular	Dip. in Civil Engg. (36 years)	14.09.79	57	S.D.O., BSL Project, Sundar Nagar (H.P.)
Malhotra, G.G. Sr. Manager	61,223	Regular	B.A., LL.B., Dip. in Admn. Law (22 years)	15.05.78	42	Asstt. Legal Adviser, O.N.G.C.
Malhotra, S.P. Dy. Manager	67,717	Regular	B.A. (Hons.) (30 years)	30.04.77	50	P.S., Ministry of Energy
Malik, M.A. Engineer	38,775	On deputation from PWD (J&K)	B.E. (Mech.) (6 years)	10.02.84	32	AE, PWD, J&K
Manchanda, P.C. Dy. Manager	46,535	Regular	Dip in Engg. (Elect.), AMIE (21 years)	02.04.79	42	Asstt. Director, Central Board of Irrigation & Power
Mandappa, B.M. Chief Engineer	89,550	Regular	B.E. (Civil Engg.), M.I. Struct. E (London); F.I.E. (29 years)	01.10.81	53	Superintendent (Designs), SAIL (Bokaro Steel Plant)
Maniappan, T.P. Dy. Manager	53,871	Regular	B.Sc. Engg. (Civil) (18 years)	22.10.81	42	Asstt. Engr., Govt. of Daman & Diu.
Maniktala, V.K. Engineer	41,413	Regular	B.E. (Mech.) (13 years)	14.06.82	36	Tech. Asstt., CEA
Marwah, A.P. Asstt. Manager	39,300	On deputation from Haryana Irrigation Deptt.	Dip in Civil Engg. (33 years)	05.09.79	54	S.D.O., Haryana Irrigation Deptt.
Mata, I.S. Prob. Executive	40,262	Regular	B.A., SAS, P.G. Dip in IR&PM (30 years)	17.03.79	54	Selection Grade Asstt., AGCR, New Delhi
Mathur, Dyal Asstt. Manager	37,237	Regular	M.A. (SW) (9 years)	18.12.81	33	Labour Officer, Modern Woolen Carpets (P) Ltd.
Mathur, G.N. Manager	46,732	Regular	A.M.I.E. (Elect.) (19 years)	07.04.78	43	Asstt. Engineer, R.S.E.B.
Mehndiratta, P.R. Asstt. Manager	49,455	On deputation from C.G. of Civil Accounts	M.A., SAS (31 years)	31.03.84	56	Accounts Officer, M/o Energy, Deptt. of Power
Mehta, O.P. General Manager	98,925	Regular	B.Sc. Engg. (Civil) (36 years)	01.01.80	57	Chief Engineer, Chukha Project Authority, Bhutan
Mintoo, F.A. Engineer	44,390	On deputation from Govt. of J&K	B.E. (Civil) (14 years)	15.10.81	38	A.E., Govt. of J&K
Mir, T.A. Asstt. Manager	47,674	On deputation from PWD (J&K)	B.E. (Civil) (17 years)	04.06.84	41	Executive Engineer, PWD (J&K)
Misra, A.K. Asstt. Manager	49,702	Regular	B.E. (Civil) (7 years)	20.02.79	30	—
Misra, R.N. Asstt. Manager	46,379	Regular	B.E. (Hons.) (Civil) (6 years)	21.06.79	28	—
Mishra, S.B.C. Manager	60,036	Regular	B.E. (Elect.) (13 years)	04.05.77	39	Asstt. Engineer, U.P.S.E.B.
Mittal, A.K. Dy. Manager	48,727	Regular	B.E. (Hons.) Elect. (10 years)	16.05.77	33	Supervisor, Baira Sui Project, Govt. of India
Mittal, Dr. K.K. Sr. Medical Officer	53,055	Regular	M.B.B.S. (16 years)	17.02.78	41	Private Practitioner
Mittal, S.K. Chief Engineer	50,692	Regular	B.E. (Elect.) (26 years)	25.05.78	50	Executive Engineer, UPSEB



1	2	3	4	5	6	7
Mohanti, Dr. S.R. Medical Officer	43,661	Regular	M.B.B.S. (10 years)	29.10.82	33	Private Practitioner
Monga, H.P. Asstt. Manager	42,990	Regular	B.A., SAS. (27 years)	19.08.81	49	Section Officer, A.G., H.P.
Mukerjee, S.K. Dy. Manager	52,478	Regular	B.A., SAS (23 years)	20.04.81	55	Accounts Officer, AG., UP.
Mukherjee, B.B. Dy. Manager	40,861	Regular	B.Sc. Engg. (C) (14 years)	10.02.82 (AN)	37	Asstt. Director, CWC
Mukherjee, K. Chief (F & A)	85,137	Regular	FICW A (29 years)	25.1.79	50	Asstt. Finance Manger, F.C.I. (P & D Division.), Sindri
Murari Lal Sr. Manager	54,932	Regular	B.E. (Civil) (23 years)	22.10.81	45	Executive Engineer, I.D.P.L.
Murthy, A.G.K. Asstt. Manager	41,921	Regular	B.Sc. Engg. Mech. (4 years)	04.05.81	27	—
Murthy, C.L.N. Accounts Officer	51,143	Regular	S.A.S. (28 years)	01.06.79	51	Section Officer, Southern Railways.
Murti, Dr. K.N. Sr. Medical Officer	36,398	Regular	M.B.B.S. (12 years)	04.07.81	39	R.M.O., SBSSTB Sanitorium (U.P.)
Nagaraja, K.S. Dy. Manager	49,777	Regular	B.E. (Civil), M. Tech. (Water Resources Engg.) (8 years)	16.05.77	31	—
Nagpal, S.K. Asstt. Manager	47,879	Regular	B.E. (Elect.) (12 years)	25.05.84	35	A.E., R.S.E.B.
Nagpal, S.S. Asstt. Manager	43,824	On deputation from HPSEB	B.Sc. Engg. (Mech.) (16 years)	31.05.84	39	A.E., HPSEB.
Nagaraj, H.R. Chief Engineer	80,395	Regular	A.M.I.E. (Civil) (29 years)	19.09.83	53	Zonal Manager, NPCC
Nair, V.P.M. Asstt. Manager	36,484	Regular	B.Sc. Engg. (Elect), M. Tech. (Power Apparatus Sys) (5 years)	24.07.81	30	Jr. Engineer, Jyoti Ltd., Baroda
Nambiar, N.P.K. Chief Engineer	61,097	Regular	B.E. (Civil), MIE (16 years)	21.07.80	55	Lt. Col. in Army
Nand Gopal Sr. Manager	70,932	Regular	B.E. (Civil), M.E. (Structures) (19 years)	03.04.80	44	Deputy Manager, TSP Ltd., Tungabhadra Dam
Narang, D.R. Accounts Officer	51,109	Regular	M.A., SAS (29 years)	11.02.77	49	Accountant, M/O Railways.
Narang, S.M. Manager	59,352	Regular	B.Sc. Engg. (Civil) (19 years)	14.02.79	42	Asstt. Director, CWC
Narayanan, Brig. P.N.S. General Manager	86,200	Regular	Degree in Engg. (Civil), MIE (33 years)	30.03.81	54	Chief Engineer, Army Headquarters, New Delhi.
Narender Paul Asstt. Manager	38,791	Regular	B.A., MSW, LL.B. (11 years)	11.02.85	35	Asstt. Pers. Mgr. K.G. Khosla Compressors Ltd.
Nema, S.K. Dy. Manager	46,668	Regular	B.E. (Elect.), Dip. in Business Mngt. (14 years)	16.07.84	41	Asstt. Manager, Food Corpn. of India.
Nepal Saha, Asstt. Manager	41,944	Regular	B.E. (Civil) (12 years)	18.9.82	36	S.D.O., NEEPCO, Shillong
Oberoi, B.R. Chairman & Managing Director	93,482	Govt. appointment	MIE (India), Post Graduate (Elect. Engg.) Dip in Business Management (32 years)	28.02.85	54	CMD, NPCC Ltd.
Ojha, R.N. Dy. Manager	54,484	Regular	B.A. (19 years)	13.07.78	42	Welfare Officer, Britania Engg. Works, Patna.
Ohri, R.K. Private Secretary Gr.I	39,982	Regular	B.A. (29 years)	28.05.77	46	Steno, Deptt. of Power, Ministry of Energy.
Pandey, U.D. Asstt. Manager	51,531	Regular	B.A., Dip. in labour laws, lab. welf. & Pers. Mgt. (27 years)	06.05.81	46	Office Supdt., BALCO.
Parihar, J.S. Asstt. Manager	42,522	On deputation from HPSEB	B.Sc. Engg. (Civil) (13 years)	18.04.84	36	A.E., HPSEB.
Paras, B.S. Personnel Officer	39,692	Regular	B.A., LL.B., DPM (21 years)	24.12.76	45	Stenographer, Ministry of Railways.
Pardasani, N.H. Manager	62,052	Regular	B.Com. (Hons), AICWA (29 years)	06.09.78	56	Sr. Accounts Officer, NPCC Ltd.



1	2	3	4	5	6	7
Parminder Singh Dy. Manager	45,354	On deputation from Irrigation Deptt. J&K	B.E. (Civil) (17 years)	15.05.78	40	Asstt. Engr., Salal H.E. Project, Govt. of India.
Pathania, K.S. Dy. Manager	43,814	On deputation from PWD, J&K.	B.E. (Mech.) (18 years)	05.01.78	42	Executive Engineer, PWD, J&K Govt.
Paul, S.N. Dy. Manager	49,537	Regular	B.A. (26 years)	23.09.80	56	AO, AG Office, Rajasthan.
Prabhakar, R.D. Manager	55,567	Regular	M.Sc. Engg. (Elec.) (15 years)	31.03.79	38	Assistant Executive Engineer, PSEB.
Prahlad, C.D. Asstt. Manager	38,894	Regular	B.E. (Elect.) (9 years)	Jan. 1977	36	Supervisor, C.E.A.
Prakash Nayyar Asstt. Manager	40,000	Regular	B.Sc. Engg. (Elect.) (9 years)	22.05.79	37	Electrical Sup., BSHEP.
Prasada Rao, P.D. Sr. Manager	44,920	Regular	B.E. (Civil) (22 years)	23.06.80	46	Dy. Director, CWC
Prasad, G.M. Asstt. Manager	50,158	Regular	B.Sc. Engg. (Civil) (12 years)	07.09.79	34	Asstt. Engr., BSEB.
Prasad, P.N. Engineer	39,464	Regular	B. Tech. (Civil) (5 years)	01.05.81	28	Trainee Engr., Engg. Constrn. Corporation, Bombay.
Prashad, V.B. Manager	61,707	Regular	B.Sc., B. Tech. (Elect.) (20 years)	11.4.81	42	Executive Engineer, U.P.S.E.B.
Prashar, P.D. Office Supdt.	36,446	Regular	B.A. (30 years)	12.07.79	53	Selection Grade Auditor, Directorate of Audit.
Pritpal Singh, Kr. Chief Engineer	67,637	Regular	B.E. (Civil), AMIE (30 years)	01.12.77	52	Superintending Engineer, PWD, J&K.
Proch. S.K. Dy. Manager	48,084	On deputation from PWD, J&K.	B.E. (Civil) (15 years)	15.05.78	43	Asstt. Director, Directorate of Design & Planning, Jammu.
Qazi, Nazir Ahmad. Manager	49,709	On deputation from Irrigation Deptt., J&K.	B.E. (Civil) (22 years)	10.09.84	46	Executive Engineer, Irrigation Deptt., J&K.
Qureshi, N.A. Asstt. Manager	54,930	On deputation from Govt. of J&K	B.E. (Mech.) (16 years)	14.01.83	41	Exe. Engr., PDD Deptt. J&K.
Rai, N.K. Engineer	38,172	Regular	B.Sc. Engg. (Mech.) (7 years)	24.08.84	33	Officer-in-charge (Workshop & Admn.) Indian Army.
Raina, A.H. General Manager	88,136	Regular	B.E. (Elect.) (25 years)	15.05.78	55	Supdtg. Engineer, Salal HE Project, Govt. of India
Raina, K.B. Dy. Manager	36,590	Regular	M.S.W. (19 years)	15.05.78	45	Labour Officer, Salal H.E. Project, Govt. of India.
Raina, M.K. Asstt. Manager	46,132	Regular	B.E. (Elect.) (10 years)	20.01.78	34	Asstt. Engr., B.S. Project Govt. of India.
Raina, Y.K. Manager	61,974	Regular	B.E., (Civil) (24 years)	01.01.82	47	Executive Engineer, PWD, J&K.
Raj Kumar Asstt. Manager	46,603	Regular	B.E. (Elect.) (9 years)	04.03.83	31	Asstt. Engr., UPSEB, Lucknow.
Rajagopalan, R. Director (Finance)	90,225	Regular (Govt. Appointment)	B.Sc., B.L. (30 years)	19.11.78	57	Accountant-General, J&K
Ramam, T.V. Dy. Manager	47,855	Regular	B.E. (Civil) (14 years)	26.03.80	37	Extra Asstt. Director, CWC.
Ramamurthi, A.R. Sr. Manager	60,716	Regular	B.A., AICWA, A.C.S. (32 years)	11.08.78	49	Senior Asstt. Manager, F.C.I.
Raman, N.V. Company Secretary & Chief (Law)	74,020	Regular	B.A., LL.B., GDCS, ACS, ICWA (Inter), Dip. in Labour Laws (29 years)	15.12.78	48	Dy. Company Secretary, Engineers India Ltd.
Ramanan, S. Asstt. Manager	44,424	Regular	B.E. (Civil) (11 years)	27.06.84	36	Engineer, M/s. KPC Ltd.
Ramani, V. Dy. Manager	58,204	Regular	B.Sc., SAS, ICWA (25 years)	29.12.81	57	Accounts Officer, BALCO, Korba.
Ramanjanyulu. A. Accounts Officer	38,022	Regular	B.Com., SAS (18 years)	01.01.77	42	Accounts Supdt., Loktak Project, M/o Irrigation & Power.
Rama Rao, K. Dy. Manager	51,288	Regular	B.E. (Civil) (14 years)	13.03.80	40	Extra Asstt. Director, CWC.
Ramdass, Dr. Sr. Medical Officer	41,476	Regular	M.B.B.S. (9 years)	06.10.79	40	M.O., LSGD Etawah.
Ramesh Chandra Manager	43,730	Regular	B.Sc. Engg. (Civil) (14 years)	16.10.78	37	Asstt. Engr., U.P. Irrigation.

1	2	3	4	5	6	7
Ramesh Chandra Dy. Manager	38,862	Regular	B.E. (Mech.) (13 years)	07.05.80	37	Asstt. Engr., PWD, U.P. Govt.
Ramtani, I.L. Sr. Manager	62,572	Regular	B.A., LL.B., P.G. Dip. in Labour Laws, Lab. Welf & Pers. Mgt. (26 years)	02.11.81	44	Sr. Adm. Officer (Pers.), Hindustan Zinc Ltd.
Rao, G.L.N. Asstt. Manager	45,454	Regular	S.A.S. (31 years)	26.05.80	49	Section Officer, C.A.G. of India.
Rao, P.L. Sr. Manager	68,445	Regular	AMIE (26 years)	12.03.81	47	Divisional Engineer, Rehabilitation Reclamation Organisation, Deptt. of Rehabilitation, Govt. of India
Rastogi, V.P. Sr. Manager	47,480	Regular	AMIE, Dip. in Ind. Admn. (28 years)	09.06.81	46	Dy. Sales Manager, Triveni Structurals Ltd.
Ravi, D. Asstt. Manager	41,433	Regular	B.E. (Elect.) (5 years)	01.05.81	27	Service Engineer, Power Centre (P) Ltd. Madras.
Ravinder Kumar Asstt. Manager	38,649	Regular	B.Sc. Engg. (Civil) (8 years)	30.12.81	30	Asstt. Director, Indian Standards Institution.
Rawat, G.S. Asstt. Manager	40,266	Regular	B.Sc. Engg. (Civil) (9 years)	19.03.79	31	Engr., M/s Mohinder Singh & Sons.
Ray, A.K. Dy. Manager	39,730	Regular	B.Sc. Engg. (Elect.) (15 years)	13.02.76	38	J.E., PWD, Tripura.
Robertson, J.H. Manager	47,360	Regular	B.E. (Mech.) (16 years)	11.10.78	40	A.E.E., Tamil Nadu Electricity Board.
Rohtagi, A.K. Asstt. Manager	50,431	Regular	B.E. (Civil) (5 years)	22.05.79	27	—
Roy Choudhury, S.N. Asstt. Manager	46,840	Regular	B.E. (Mech.) (13 years)	01.01.77	40	Supervisor, Loktak Project, Govt. of India
Roy, S.R. Asstt. Manager	44,841	Regular	B.E. (Civil) (5 years)	06.05.81	27	Asstt. Engr. (Design) Engg. Consultants, New Delhi.
Sachdev, H.S. Manager	43,992	Regular	B.A. (35 years)	19.09.79	54	P.S. to Minister of State for Energy
Sachdeva, A.K. Manager	55,027	Regular	B.E. (Mech.) (16 years)	21.12.78	38	A.E., National Fertilisers Ltd., Bhatinda.
Sachdeva, S.K. Sr. Draftsman	39,794	Regular	Dip. in Draftsmanship (Mech.) (22 years)	19.02.77	43	Sr. Draftsman, CEA
Saha, Sandip Dy. Manager	44,440	Regular	B.E. (Civil) (16 years)	08.10.82	40	Exec. Engineer, CWC
Sahoo, Dr. S. Sr. Medical Officer	54,430	Regular	M.B.B.S. (11 years)	06.02.78	39	Asstt. Surgeon Gr.I, Health Service, Govt. of Manipur
Saini, Bhim Office Supdt.	39,248	Regular	Matric (33 years)	01.08.76	53	UDC, CWC
Saini, J.S. Deputy Manager	41,572	Regular	B.Sc. Engg. (Elect.) (18 years)	07.08.77	42	AE, Beas Construction Bpard.
Samant, J.S. Asstt. Manager	41,927	Regular	B. Tech. (6 years)	22.05.79	31	—
Sapra, I.J.L. Asstt. Manager	46,683	Regular	B.A. (27 years)	23.05.79	51	Suprintendent, Beas Construction Board
Saraf, B.K. Chief Engineer	56,614	Regular	B.E. (Elect.) (29 years)	29.12.83	57	Jt. Commissioner, PDD (J&K)
Saraf, B.R. Asstt. Manager	46,416	Regular	B.E. (Civil) (6 years)	10.09.79	28	—
Saroj Kanta (Dr.) Medical Officer	39,210	On deputation from Health Depptt. (J&K)	M.B.B.S. (17 years)	18.12.80	44	Asstt. Surgeon, Health Deptt., J&K Government
Satya Prakash, Asstt. Manager	42,968	Regular	B.E. (Civil) (11 years)	09.07.81	34	Asstt. Manager, FCI
Saxena, J.C. Law Officer	47,527	Regular	M.A., LL.M. (30 years)	07.12.78	51	Selection Grade Auditor, A.G.C.R.
Saxena, Rakesh Dy. Manager	47,396	Regular	B.Sc. Engg. (Civil) (12 years)	23.11.82	34	Engr. (Civil), EC Ltd., Burdwan (W.B.)
Saxena, R.K. Asstt. Manager	38,004	Regular	B.A., LL.B. (20 years)	19.11.79	41	Law Asstt., UPSEB



1	2	3	4	5	6	7
Saxena, Y.C. Sr. Accountant	47,094	Regular	M.A., SAS (20 years)	21.04.81	44	Section Officer, A.G., M.P.
Seetharaman, N. Dy. Company Secy.	51,065	Regular	B.A., LL.B., ACS. (27 years)	26.11.79	47	SPA, Planning Commission
Sehgal, H.K. Sr. Supervisor	41,547	Regular	Dip. in Mech. (Engg.) (14 years)	20.01.78	39	Supervisor, Baira Siul Project, Govt. of India
Seghal, S.C. Dy. Manager	51,909	Regular	B.Sc. (Civil Engg.) (15 years)	07.11.80	38	Asstt. Engr., Chukha Hydel Project
Sehgal, V.P. Dy. Manager	43,840	Regular	B.E. (Elect.) (17 years)	12.01.78	39	Shift Engineer, BSL Project
Sen, S.C. General Manager	76,695	Lien-holder from ASEB	B.E.(Civil), FIE (13 years)	31.08.84	51	Chief Engineer, Assam State Electricity Board.
Sen, S.P. Dy. Manager	53,555	Regular	M.E.(Civil) (13 years)	11.08.80	37	Asstt. Engineer, I&W Department, West Bengal
Sethi, Rajeev Asstt. Manager	40,396	Regular	M.Sc., Engg. (Civil) (5 years)	15.04.80	28	-
Sharma, B. K. Sr. Manager	61,370	Regular	B.Tech. (Civil), M. Tech. (Soil Mechanics and Foundation Engg.) (22 Years)	18.07.81	45	Research Engg. Institute of Rock Mechanics, Univ. of Karlsruhe, (W. Germany)
Sharma, B.R. Town Planner	51,788	On deputation from J&K Govt.	G.D.(Arch.), MICA (15 years)	05.12.83	38	Asstt. Town Planner, Jammu Development Authority
Sharma, D.K. Asstt. Manager	49,086	Regular	B.A., P.G. Dip. in Ind. Relations & Pers. Mngt. (19 years)	01.02.78	48	P.S., BHEL.
Sharma, G.S. Asstt. Manager	43,968	Regular	B.Tech. (Civil) (6 years)	01.02.80	29	—
Sharma, J.K. Asstt. Manager	37,178	Regular	B.E.(Civil) (6 years)	23.08.79	27	—
Sharma, K.D. Dy. Manager	44,636	On deputation from Irrigation Deptt. (J&K)	B.E.(Civil) (18 years)	20.05.78	47	Executive Engineer, J&K
Sharma, K.N. Dy. Manager	48,856	Regular	B.E.(Civil), M.E.(Hyd. structures) (16 years)	14.04.81	40	Lecturer in Civil Engg. M.R. Engg. College, Jaipur
Sharma, K.S. Manager	45,503	On deputation from Punjab PWD (IB)	B.Sc. Engg. Hons.(Civil) (19 years)	23.05.77	37	S.D.O., PWD.(I.B.) Punjab
Sharma, M.D. Dy. Manager	40,892	Regular	B.E.(Civil) Dip. in Business Management (11 years)	20.10.82	36	AD (Extra), CWC
Sharma, M.T. Asstt. Manager	49,664	Regular	B.Sc. Engg. (civil) (6 years)	14.04.80	30	Junior Site Engineer, M/s Gammons India Ltd.
Sharma, O.P. Chief Engineer	64,622	Regular	B.Sc. Engg. (Civil) (24 years)	15.05.78	48	Executive Engineer, Salal H.E. Project, Govt. of India
Sharma, O.P. Asstt. Manager	42,012	Regular	B.E.(Hons.) (Civil) (7 years)	1.11.1980	29	J.E., PWD, H.P.
Sharma, P.D. Manager	56,780	Regular	AMIE, Dip. in Elect. Engg. (22 years)	29.08.77	42	A.E., U.P.S.E.B.
Sharma, P.M. Dy. Manager	59,524	On deputation from Border Roads Orgn.	B.Sc., Grade ITE, PG Dip. in Business Mngt. (20 years)	7.4.82	45	PO, Border Roads Organisation.
Sharma, R.K. Manager	47,334	Regular	B.E.(Elect.), PG Dip. in Elect. Engg., Dip. in Marketing Management (17 years)	31.08.78	39	A.E., Beas Project, Chandigarh.
Sharma, R.R. Asstt. Manager	49,469	Regular	B.E. (Civil) (5 Years)	22.05.79	30	—
Sharma, S.C. Dy. Manager	43,840	Regular	BE (Elect.) (10 years)	13.09.1978	31	J.E., H.P.S.E.B.
Sharma, T.R. Asstt. Manager	39,825	Regular	B.Sc. Engg. (Mech.) (13 Years)	07.07.77	36	Engineer, Beas Dam Project

1	2	3	4	5	6	7
Sharma, Dr. Umesh Personnel Officer	40,768	Regular	M.A. (Psych.), Dip. in Medical Psych., D.P.M., Ph.D. (12 Years)	25.1.84	37	Psychologist, BHEL
Sharma, V.B. Dy. Manager	48,861	Regular	B.Sc. Engg. (Civil) (16 Years)	23.09.81	42	Service Engineer, HCC Ltd.
Sharma, V.N. Accounts Officer	38,783	Regular	B.A., S.A.S. (22 Years)	24.10.77	42	Supdt. (F&A), CHEPCB
Sharma, Y.K. Deputy Manager	44,617	Regular	B.Tech (Mech). (12 years)	08.12.80	40	Asstt. Engineer, UP State Agro Ind. Corpn. Ltd.
Sharma, Y.K. Engineer	36,260	On deputation from HP, PWD	BE (Civil) (17 Years)	21.6.80	40	AE,HP,PWD
Shenvi, N.R. Manager	54,342	Regular	B.E. (Civil) (15 Years)	09.10.70	39	Engineer, Mysore Power Corpn. Ltd., Bangalore
Singh, B.R. Dy. Manager	49,554	Regular	B.Sc. Engg. (Elect.)  (15 Years)	02.08.77	41	Sectional Officer, Beas Construction Board, BSL Project.
Singh, Jagdish, Dy. Manager	48,891	Regular	B.E. (Elect.) (14 years)	29.10.81	41	Ass.t. Director, CEA
Singh, J.P. Dy. Manager	45,374	Regular	B.Sc. Engg. (Civil) (8 Years)	19.12.77	32	—
Singh, Kanwar Rajinder Asstt. Manager	41,664	Regular	B.E. (Elect.) (7 Years)	28.04.78	36	—
Singh, Kirpal Sr. Draftsman	33,406	On deputation from Irrigation Works, Punjab.	Dip. in Draftsmanship (Civil) (30 Years)	14.02.83	55	Draftsman, Irrigation Works, Punjab.
Singh, K.M. Asstt. Manager	47,450	Regular	B.E. (Elect.) (6 years)	22.05.79	28	—
Singh K.P. Dy. Manager	46,895	Regular	B.E. (Elect.) (14 Years)	11.03.80	38	Asstt. Director, CEA
Singh, M.P. Engineer	46,342	Regular	A.M.I.E. (16 Years)	08.03.78	34	J.E., Govt. of Punjab.
Singh, Nain Asstt. Manager	43,104	Regular	B.E. (Elect.) (5 Years)	02.05.80	31	—
Singh, Maj.R.D.P. Manager	60,016	Regular	B.Sc. Engg. (Civil) (19 Years)	21.03.79	42	Major in Indian Army.
Singh, Cap. Virender Admn. Officer	51,319	Regular	B.A., D.P.M., Dip. in Training & Development (Parts A&B), (12 years)	14.01.82	33	Security & Adm. Officer, Instrumentation Ltd., Palghat
Singh, Zamdedar Office Supdt.	40,049	Regular	M.A. (34 Years)	24.7.79	56	Selection Grade Auditor, D.A.C.R.
Sinha, Alok Asstt. Manager	39,548	Regular	B.Tech. (Mech.) (10 Years)	10.07.81	31	Project Engineer, Kinetics Technology
Sinha, A.S.C. Sr. Manager	83,474	Regular	B.Sc. (Prod. Engg.), M.S. (Mech. Engg.), MBA (17 years)	30.06.81	38	Sr. Planning Engineer, B.H.E.L.
Sinha, B.K. Dy. Manager	49,202	Regular	B.A. (Hons.), SRAS (32 years)	16.12.81	54	Accounts Officer, N.E. Railways
Sinha, B.S.P. Chief	72,384	Regular	B.A., LL.B. (23 Years)	03.06.81	46	Manager, BHEL
Subramani, C.G. Chief Engineer	64,563	Regular	B.E. (Civil), M.I.E. (25 years)	03.10.79	48	Excutive Engineer, Border Roads Deptt.
Subramanyan, P.V.S. Accounts Officer	36,100	Regular	B.Com., SAS (19 Years)	1.1.77	39	Accounts Supdt., CHEPCB
Suri, B.L. Sr. Manager	52,021	On deputation from PDD, J&K	B.Sc. Engg. (Elect.) P.G. Dip. in Business Management (26 Years)	11.07.82	50	S.E. (Electrical), PDD, J&K
Swapan Deb Engineer	38,238	Regular	B.Sc. Engg. (Civil) (4 years)	20.02.82	27	—



1	2	3	4	5	6	7
Tahilyani, T.C.A. Manager	45,826	Regular	M.Sc. Engg. (Elect.) (14 Years)	04.05.78	30	Asstt. Engineer, UPSEB
Tandon, R.K. Dy. Manager	48,404	Regular	B.Sc. Engg. (Elect.) (14 Years)	06.08.77	40	Supervisor, C.E.A.
Tanaja, S.K. Manager	72,211	On deputation from Irrigation & Power Deptt., Govt. of Punjab.	B.E. (Civil) (24 Years).	13.08.82	49	S.D.E., Irrigation & Power Deptt. Govt. of Punjab.
Tather, G.C. Asstt. Manager	48,963	Regular	B.E. (Elect) (13 years)	29.6.84	34	A.E., RSEB.
Trehan, P.S. Dy. Manager	47,383	On deputation from Punjab Irrigation Deptt.	AMIE (Mech.) (18 years)	06.10.80	41	S.D.O., Punjab Irrigation Deptt.
Tripathi, S.D. Dy. Manager	43,224	Regular	AMIE (Elect.) (20 years)	22.10.81	38	AE, RSEB
Tyagi, G.D. Chief Engineer	81,271	On deputation from U.P. Irrigation Deptt.	B.E. (Civil) (30 years)	10.02.78	53	Executive Engineer, Irrigation Deptt, U.P.
Ulaganathan, D. Dy. Manager	52,049	Regular	B.E. (Elect.) (13 years)	16.06.77	36	A.E., Tamil Nadu Elec. Board
Upendra, Rai Asstt. Manager	38,908	Regular	B.Sc., PG Dip. in Social Service with specialization in PM&IR (11 years)	16.12.81	34	P.O., Reforms & Rehabilitation (P) Ltd., Dhanbad.
Varatharajan, R. Sr. Manager	61,940	Regular	M.A. (English), M.A. (Economics), SAS, (31 years)	13.11.78	56	Revenue Audit Officer, A.G.C.R.
Vasudevan, K. Principal	40, 430	Regular	B.A., B.Ed. (19 years)	29.03.78	40	Principal, Directorate of Education, Bhutan.
Veerabhadraiah, S. Asstt. Manager	48,971	Regular	M.A. (Pub. Admn. with Lab. Welf.) M.A. (Eco., Stat.) (29 years)	18.06.80	49	Superintendent, NSSO, Deptt. of Statistics, Govt. of India.
Velaydhan, R. Engineer.	38,764	Regular	Dip. in Elect. Engg. (19 years)	27.8.77	43	Sectional Officer GREF.
Venkatachalm, K.R. SPS	46,394	Regular	SSLC (29 years)	01.08.78	52	SPA to Secretary (Power), Ministry of Energy.
Venkatesh, C.R. Sr. Manager	61,877	Regular	B.E. (Civil), M.E. Structures (10 years)	29.07.81	41	Scientist, Cement Research Institute of India.
Verma, V.K. Asstt. Manager	38,456	Regular	B.E. (Civil) (4 years)	01.02.80	30	—
Verma, D. Paul Sr. Manager.	55,362	Regular	B.Sc. Engg. (Civil) (19 years)	09.08.76	44	S.D.O., Punjab PWD Irrigation)
Verma, R.C. Manager	52,554	On deputation form PWD, J&K	B.Sc. Engg. (Mech.) (21 years)	15.02.84	46	Exc. Engr., PWD, J&K
Viswanathan, N. Sr. Manager	70,787	Regular	M.E. (Civil) (22 years)	17.09.79	46	Assistant Chief Engineer, Triveni Structurals Ltd.
Vishwanath, T.A.B. Dy. Manager	50,646	Regular	B.E. (Civil) P.G. Dip. in project Management (18 years)	01.12.80	39	Asstt. Executive Engr. Border Roads orgn.
Vinod Kumar Dy. Manager	41,926	Regular	B.E. (Mech.) (13 years)	29.2.80	36	Sr. Engr. (Mech.) Salal HE Project, (J&K)
Wadhwa, I.D. Office Suptdt.	38,288	Regular	Metric (34 years)	07.07.79	51	Selection Grade Auditor, Directorate of Audit, CW&M
Wali, T.K. Engineer	45,370	Regular	B.E. (Elect) (8 years)	30.5.81	35	Sales Engineer, M/s. Batli Bai & Co.
Wazir, S.L. Dy. Manager	49,570	On deputation from Irrigation, PDD, J&K	B.Sc., B.E. (Civil) (18 years)	4.5.74	46	Asstt. Engineer, Irrigation Deptt. (J&K)

1	2	3	4	5	6	7
Yaduvendra, R.K. Sr. Manager	52,130	Regular	M.Sc. (Mech. Engg.), MBA. (20 years)	01.01.82	44	Dy. Dir. Office of Dev. Commr. (SSI) M/O Industry, Govt. of India.
Yogendra Prasad Sr. Manager (Elect)	48,951	Regular	B.Sc. Engg. (Elect) (17 years)	10.5.78	40	Asstt. Engineer Bihar State Electricity Board.
Yugal Kishore (Dr.) Medical Officer	42,633	On deputat- ion from Health Deptt. J&K	M.B.B.S. (20 years)	26.12.80	43	DMO, Health Deptt., J&K.
Zutshi, K.L. Chief Engineer	72,890	Regular	B.E. (Civil) M. Tech. (24 years)	15.05.78	48	Executive Engineer, Salal Hydielectric Project, Govt. of India.
Zustshi, Dr. (Mrs.) Muni, Medical Officer.	36,022	Regular	M.B.B.S. (11 years)	8.1.81	37	Asstt. Surgeon, Health & Family Planning Deptt.; Govt. of J&K

**(B) Particulars of employees employed for part of the financial year who were in receipt of remuneration not less than Rs. 3000/- p.m.**

Aggarwal, C.L. Chief Project Manager	55,443	On deputation from PSEB	B.Tech. (Hons.) M.Sc. Engg. (Elect.) (19 years)	08.02.86	47	S.E. PSEB
Aggarwal, M.N. Manager	44,525	Regular	B.Com. (Hons.), ACA. (17 years)	16.04.85	41	Dy. Fin. Mgr. M/s. Engg. Projects India Ltd.
Chaudhary, S.P. Chief Engineer	32,622	On deputation from HPSEB	B.Sc. Engg. (Civil) (25 years)	13.9.85	48	S.E., HPSEB
Ganju, B.L. Manager	29,147	On deputation from H.P.S.E.B.	B.E. (Civil) (27 years)	30.09.85	42	Officiating SE, HPSEB
Garg, M.P. Manager	27,459	On deputation from HPSEB	B.E. (Civil) (28 years)	24.09.85	43	Officiating SE HPSEB
Gupta, P.K. Manager	19,290	On deputation from Punjab Irrigation Works	B.E. (Elect.) (18 years)	12.04.77	41	S.D.O., Punjab Irrigation Works
Gupta, S.P. Chief Engineer	19,353	On deputation from PDD, J&K.	B.E. (Elect.) (24 years)	25.11.85	48	SE, PDD, J&K.
Jain, P.P. Chief (P&A)	33,922	Regular	M.A., LL.B. Diploma in Labour Laws, Labour Welfare & Pers. Mgt. (33 years)	26.10.78	56	Manager (Personnel) BHEL.
Kanwar, R.S. Dy. Manager	6,874	On deputation from HPSEB	B.Sc. Engg. (Elect.) P.G. Dip. in Water Resources	12.06.78	41	Asstt. Engineer, HPSEB.
Kaul, P.N.	26,580	On deputation from PHE Deptt. J&K Govt.	B.E. (Civil) (20 years)	18.01.84	48	XEN, PHE Deptt. J&K Govt.
Asstt. Manager Madan, Lal Manager	11,793	On deputation from UPSEB	B.E. (Elect.) (16 years)	06.09.77	40	Sr. Asstt. Engineer, UPSEB.
Nagpal, A.K. Chief Engineer	43,054	On deputation from PDD, J&K	B.E. (Elect.) (30 years)	07.08.84	45	S.E., PDD J&K
Naidu, B.S.K. Sr. Manager	47,795	Regular	B.E. Hons (Mech) M. Tech (Hydr.) (16 years)	28.02.82	40	Manager, BHEL,
Popli, N.K. Asstt. Manager	39,947	Regular	B.Com. (Hons.), A.C.A. (15 years)	14.09.78	35	Popli & Associates
Sarbhoy, O.P. Director (Personnel)	51,657	Govt. Appointment	M.A. (Ecol), LL.B., M.A. (Social Work) (31 years)	05.08.85	55	Dy. General Mgr. BHEL.
Thapar, V. Dy. Manager	26,830	Regular	M.A. (19 years)	03.10.79	58	Asstt. Director (A.R.) Delhi Administration
Verma, Maj. S. Manager	21,454	Regular	B.E. (Civil) (22 years)	06.03.79	43	Major in Indian Army.

- Notes:
- (1) None of the above employees is related to any of the Directors of the Corporation within the meaning of Section 6 of the Companies Act, 1956.
  - (2) The terms and conditions of appointment are as determined by Government/Rules and Regulations of the Corporation in force from time to time, as the case may be.
  - (3) Designations indicated in the list denote the nature of duties performed by employees.
  - (4) (a) The 'Remuneration' includes cost of hiring corporation-leased accommodation wherever applicable, employer's contribution to PF etc.  
(b) The Gratuity amount has not been taken into account as the same has been provided on the basis of Gratuity-cum-LIC Policy taken with Life Insurance Corporation of India.  
(c) In the case of employees posted abroad, the remuneration includes Foreign Allowance also.