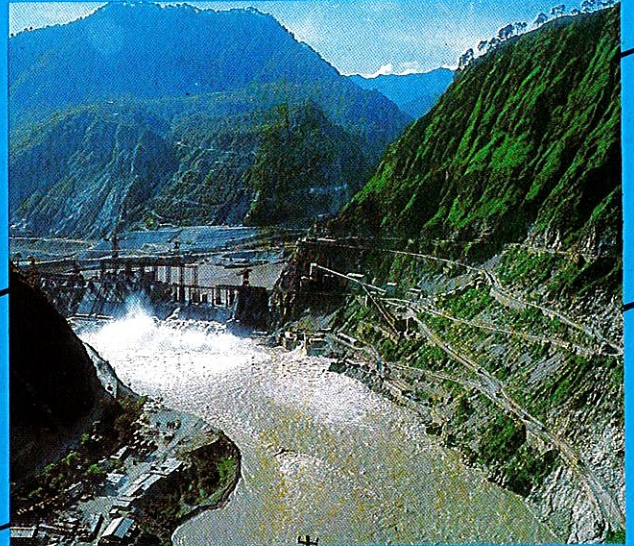
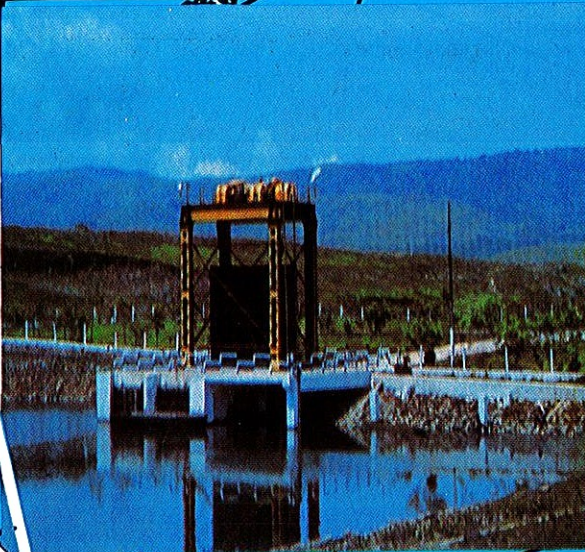


# NINTH ANNUAL REPORT 1984-85



National Hydroelectric  
Power Corporation Ltd.

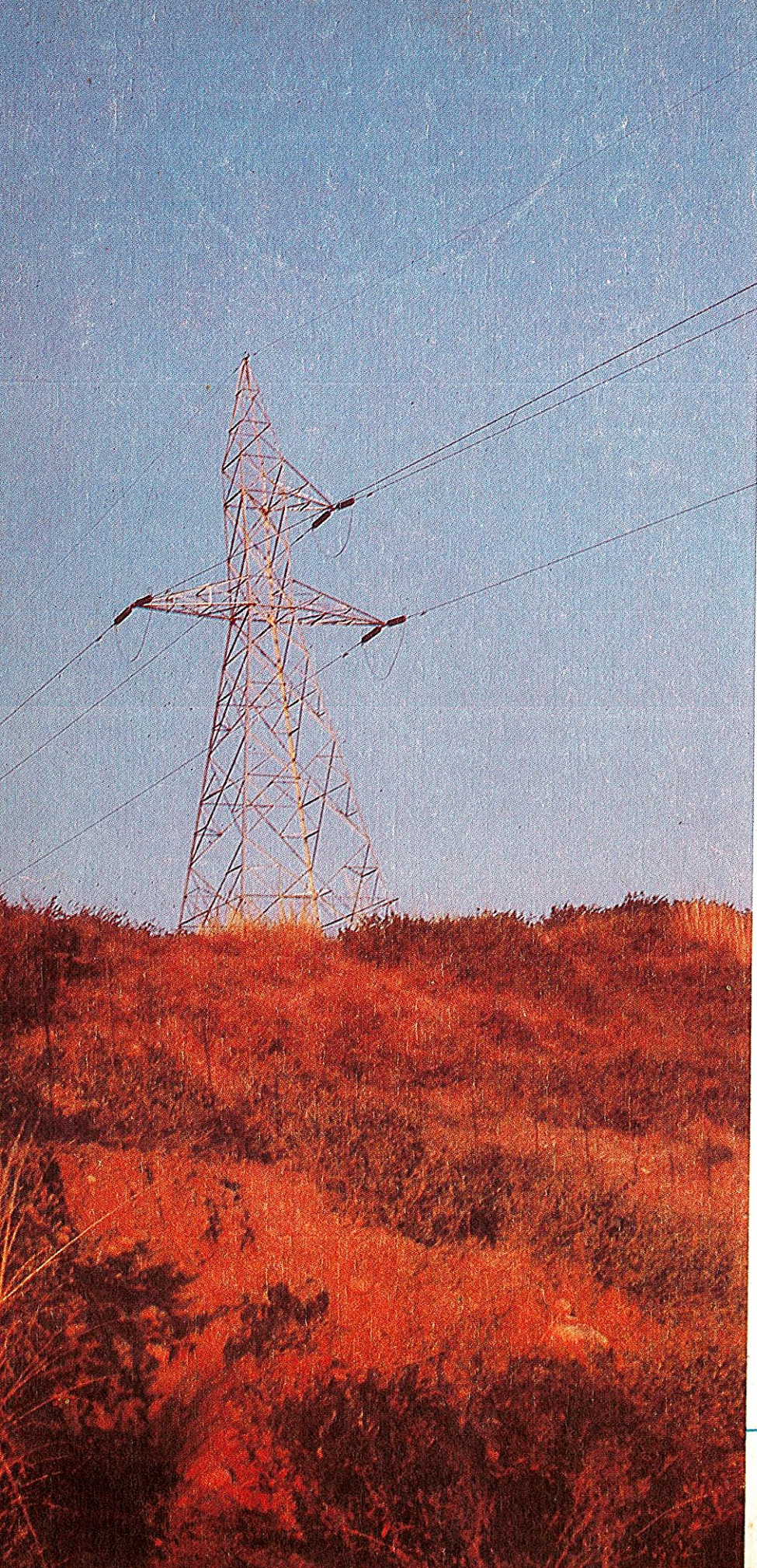
## CONTENTS

Board of Directors	3
Chairman's Speech	5
Directors' Report	7
Accounts	34
Auditors' Report	53
Comments of the Comptroller & Auditor- General of India.	56

### COVER PICTURES:

*Intake structure Loktak*

*Downstream view of concrete dam, Salal*



*Transmission network—Salal.*

## BOARD OF DIRECTORS

**Chairman & Managing  
Director**

Pirzada Ghulam Nabi  
(upto 28.2.85 AN)

Shri B.R. Oberoi  
(from 28.2.85 AN)

**Directors**

Shri A.N. Singh  
(upto 1.5.85)

Shri C.S. Hukmani  
(upto 25.3.85)

Shri Satish Khurana

Shri K. Padmanabhaiah

Shri K.K. Kashyap  
Director (Technical)

Shri R. Rajagopalan  
Director (Finance)

Shri K. Madhavan  
(from 1.5.85)

Shri T.C. Agrawal  
(from 1.5.85)

Shri N.V. Raman

**Company Secretary &  
Chief (Law)**

### AUDITORS

**Statutory Auditors**

M/s S.L. Khindaria & Co.  
S-215, Panch Shila Park,  
New Delhi-110 017

**Branch Auditors**

(i) M/s APS Associates  
3/2 Madan Street  
(First Floor),  
Calcutta-700 072.

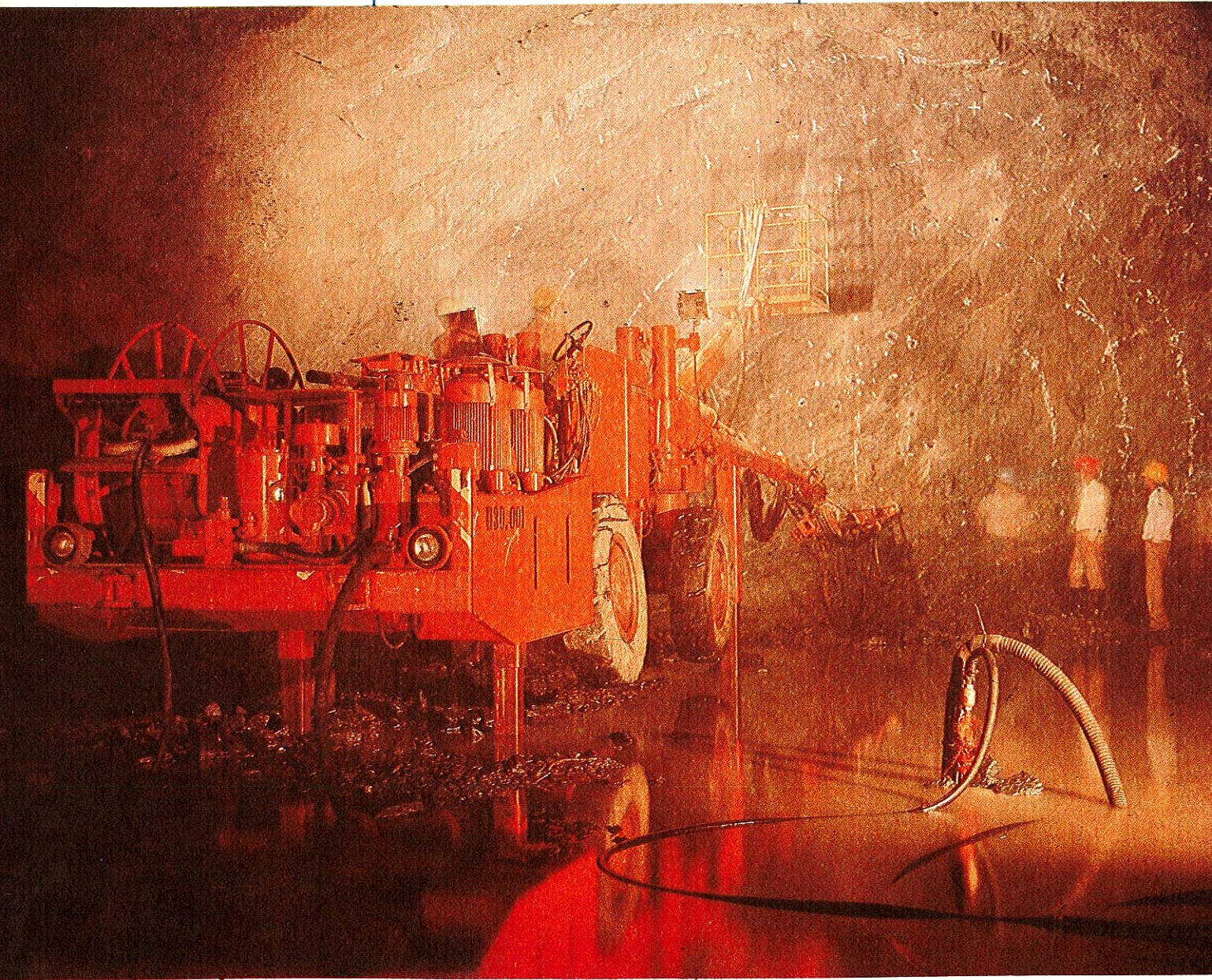
(ii) M/s K.B. Chandna & Co.  
E-27, N.D.S.E. II,  
New Delhi-110 049.

**Bankers**

State Bank of India

**Registered Office**

'Hemkunt Tower'  
98-Nehru Place,  
New Delhi-110 019.



*Jumbo drilling machine in operation in diversion tunnel—Chamera.*

## CHAIRMAN'S SPEECH



Dear Friends,

It gives me great pleasure to welcome you to the Ninth Annual General Meeting of the National Hydroelectric Power Corporation Limited. The Audited Accounts for the year 1984-85, the Directors' Report alongwith Auditors' Report and the comments of the Comptroller and Auditor-General of India, of your company are before you for consideration and adoption.

Your Corporation has shown a net profit of Rs. 856.34 lacs during the year and made contribution of Rs. 1759.72 lacs to the Public Exchequer. Your Corporation has carried out execution of capital works of the order of Rs. 24,295 lacs during this year.

The year 1984-85 represented major landmarks in the activities of the Corporation. Loktak Power Station which was closed due to sudden mishap in the power tunnel, in July, 1983 was recommissioned in August,

1984 after carrying out necessary restoration works. The Government of India accorded sanction for the implementation of Chamera and Tanakpur Hydroelectric Projects. The Loan Agreement for the Chamera Project was signed with M/s EDC and CIDA of Canada for financing Chamera Project. Simultaneously, another agreement was signed with M/s SNC/ACRES, CGE and MIL of Canada for consultancy services and supply of Generator & Turbine Core Packages for the Chamera Project. During April 1984, NHPC signed an agreement with Swedish Power Services for consultancy for investigation of Dhauliganga Project Stage I and also for procurement of specialised equipment from Sweden required for these works. Agreement was also signed with Orissa State Electricity Board for the transfer of 400 KV Jeypore-Talcher Transmission Line for execution.

The progress of construction works at Salal considerably picked up and the work is going on round the clock, and as a result of the continuous work on the Project, foundation for the commencement of the erection of Unit-I Hydro turbine and Generator is practically ready and the erection work is being taken up in hand. All efforts are being made to achieve the target of commissioning of the first unit by September, 1986. Construction work was also taken in hand on Tanakpur Hydroelectric Project.

Various works relating to the infrastructural facilities, construction of diversion tunnel, construction of foundation for Coffor Dam and works on abutment of the dam for

Chamera Project were taken in hand during this period. Steps have also been taken to commence the work on the Head Race Tunnel, access to the Power House and other structures of the Project.

Offers received from various parties for bilateral assistance for the execution of Dulhasti Project are being evaluated by a high level Committee appointed by the Government of India. Infrastructural works at the Project site on construction of roads, housing, power supply and widening of roads from Kishtwar to the Project site are in progress.

Matter relating to the release of land for the construction of Koel Karo Project is being pursued with the Bihar Government on priority and infrastructural works will be taken in hand as soon as the land is provided to your Corporation.

Most of the 220 KV Transmission lines and substations of Chukha Transmission System have been completed and the work on the 400 KV Transmission Line from Farakka to Malda is in progress. Work on the construction of 400 KV Jeypore-Talcher Transmission Line, 220 KV Transmission Line for Salal Project and 400 KV Transmission Line for Chamera Project is being taken in

hand. In pursuance of the proposals for undertaking pre-construction works on Uri Project (480 MW) in J&K, Rangit (60 MW) in Sikkim and Dhauliganga Stage I (260 MW) in U.P., steps are being taken to establish resources for undertaking these works during this year. Steps have also been taken to establish organisation for undertaking investigation works for Dhauliganga Stage II and Stage III and Barah Pumped Storage Scheme (540 MW) in Alwar (Rajasthan).

I am grateful to the Hon'ble Minister for Energy, Hon'ble Minister of State for Power and Secretary (Power) for the valuable guidance given from time to time. I am also grateful to the Officers of the Department of Power and other Departments of the Government of India and other States for their cooperation. I take this opportunity to thank all of you for taking keen interest in the activities of the Corporation.

I am also thankful to all executives, staff and the workmen of your Corporation for their excellent performance and very close cooperation but for which the achievements of your Corporation would not have been possible.



B.R. OBEROI  
Chairman & Managing Director

New Delhi  
Date: 30th September, 1985

## DIRECTORS' REPORT

### To the Members:

Your Directors have great pleasure in presenting the 9th Annual Report and the Audited Statement of Accounts for the year ended 31st March, 1985.

### 2. (a) FINANCIAL HIGHLIGHTS

The financial highlights of the Operating Units for the year were as under:-

	(Rupees in lakhs)	
1. Gross Profit before providing for depreciation & interest	2777.88	
2. Less:		
(i) Depreciation	386.73	
(ii) Interest on Govt. Loans	1530.81	
(iii) Preliminary expenses written off	4.00	1921.54
3. Net profit for the year		856.34
4. Depreciation written back and other prior period adjustments (Net)		1289.24
5. Net Profit		2145.58

The contribution from the Corporation to the Public Exchequer during the year was Rs. 1759.72 lakhs which includes payment of interest on Government Loans.

The internal resources generated during the year on the operational units were Rs. 1243.07 lakhs.

As regards sale of power, the sale during the year was Rs. 3645.26 lakhs against the target of Rs. 3634.9 lakhs for the year.

### Change in Depreciation Policy

The Depreciation Policy of the Corporation was reviewed and revised during the year to charge depreciation on Assets, Plant & Machinery etc. used for generation/transmission of power at the rates as laid down in the notification under Sec. 68 of the Electricity (Supply) Act, 1948.

### (b) Share Capital:

The Authorised Share Capital of the Corporation remained at Rs. 400 crores during the year. The Issued, Subscribed and Paid-up Capital increased from Rs. 165.6063 crores to Rs. 222.3101 crores during the year. All the Shares, were entirely subscribed by the Central Government. An amount of Rs. 90.5665 crores was kept in Share Money Deposit during the year pending allotment of Shares as on 31st March, 1985.

### (c) Loans:

During the year, the Corporation has taken fresh loans totalling Rs. 27.98 crores from Govt. of India and Rs. 14.05 crores from Export Development Corporation of Canada (EDC). The total amount of loans including the EDC Loan as at the end of the year stood at Rs. 174.88 crores.

### 3. PERFORMANCE OF OPERATING PROJECTS

#### (a) Baira Siul H.E. Project (H.P.):

The quantum of electricity generated by the Baira Siul H.E. Project

during the year 1984-85, was 660.78 million units against a target of 920 million units. Shortfall in generation was on account of less inflow of water in the rivers.



An Overview of power station complex-Baira Siul

#### (b) Loktak H.E. Project (Manipur):

It was reported to you at the last meeting that after completing the restoration works including re-routing of the tunnel, the Project was recommissioned on 6th Aug. '84. Since then, the Project has been generating power as per grid requirements and subject to transmission



line constraints. After it was recommissioned in August, 1984, the Project has generated 260.17 million units against the target of 356.2 million units for the year 1984-85. The shortfall in generation was due to lack of adequate demand for power from beneficiary States and also on account of non-availability of adequate transmission system for utilisation of the power. Your Cor-

#### 4. PROGRESS OF PROJECTS UNDER CONSTRUCTION

##### (1) *Salal H.E. Project (J&K):*

###### (i) *Concrete Dam*

During the year, 355.92 TM<sup>3</sup> of concreting was placed against a target of 366.07 TM<sup>3</sup>, thus completing 83.7% of the whole work. Blocks 1 and 2 were raised to the full height of 495 M. The concrete Dam is

###### (ii) *Rockfill Dam*

1598 TM<sup>3</sup> of placement has been achieved during the year against a target of 1583.4 TM<sup>3</sup> thus completing 80.77% of the total work. The Rockfill Dam is scheduled to be completed by December, 1985.

At the end of July, 1985, the upstream portion of the rockfill dam has been raised to a level of 482 M.

###### (iii) *Power House*

During the year, 62.6 TM<sup>3</sup> of excavation and 34.26 TM<sup>3</sup> of concreting were done against a target of 79.1 TM<sup>3</sup> of excavation and 42.1 TM<sup>3</sup> of concreting, thus completing 84.53% of excavation and 38.54% of concreting.

The erection of Scroll Casing for Unit I was completed and erection of the Scroll Casing in Unit-II was taken up during the year.

As at the end of July '85, the concreting of the foundation for the erection of electro-mechanical equipment upto a level of 392 M had been completed and the concreting of the generator barrel Unit-I was taken up and completed on 7.9.85. Concreting of the B&D Line column and beams as per layout in the machine hall has been completed and concreting of floors at different elevations in the auxiliary bay is in progress. The roofing in the service bay has also been completed in all respects and that in the machine hall is being taken up. The protection walls which were required to be raised to a level of 408.5 M before the on-set of monsoon were completed.



*An interior view of power house-Loktak*

poration has already started work on the construction of the second Liematak-Jiribam Transmission Line for increasing the transmission capacity.

scheduled to be completed by November, 1985.

A general level of 475 M has been achieved on the non-over-flow blocks as at the end of July, 1985.

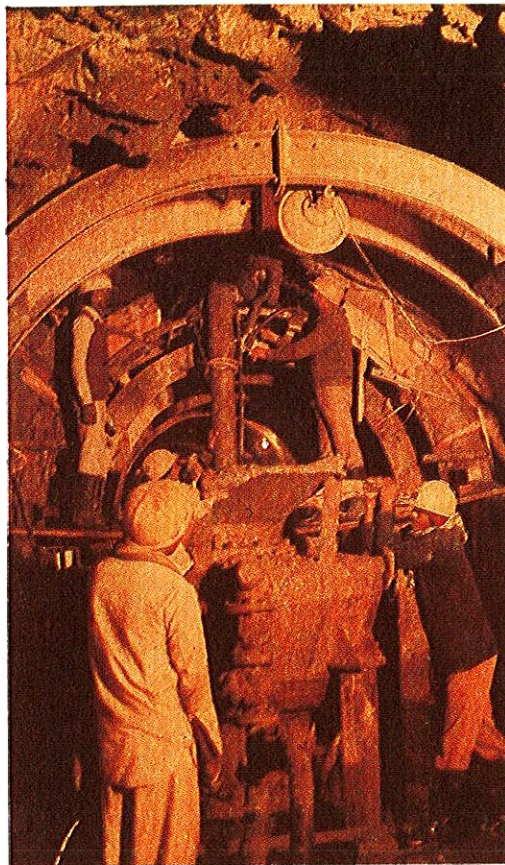
Major equipment for the electro-mechanical works are already at site and erection work in the Turbine Generator hall is expected to start from September, 1985. In the meantime pre-assembly of rotor has been started in the service bay to expedite erection. The work on the switchyard erection is also expected to start simultaneously.

#### (iv) Penstocks

44.26 TM<sup>3</sup> of excavation and 59.5 TM<sup>3</sup> of concreting were completed during the year against a target of 46.25 TM<sup>3</sup> and 56.31 TM<sup>3</sup> respectively. The work of fabrication and erection of steel ferrules is progressing as per schedule and so far 1601 MT of penstock ferrules have been erected. The progress of work as at the end of March, 1985, was 33.35%. The work is progressing as per schedule and is expected to be completed by March, 1986.

#### (v) Tail Race Tunnel

248 M of heading, 417.5 M of Benching and 389.5 M of overt lining were completed during the year against a target of 263 M in heading, 421 M of benching and 413.5 M of overt lining. As at the end of March, 1985, 83.65% of Heading, 49.3% of Benching and 37.7% of overt lining were completed. This activity is scheduled for completion by May, 1986. As at the end of July, 1985, against the total length of 2410 M, 340 M in heading, 820 M in benching and 1257 M in overt lining were left for completion.



Work in progress in the drainage tunnel—Salal.

#### (vi) Drainage gallery

The boring of the drainage gallery was completed during the year. In addition, 788 M of lining and 6830 M of curtain grouting were achieved against a target of 787 M of lining and 7700 M of curtain grouting. 510 M of consolidated grouting was also completed against a target of 600 M during the year.

#### (vii) Plunge Pool

During the year, 199.59 TM<sup>3</sup> of excavation and 14.69 TM<sup>3</sup> of concreting were done against a target of

263.6 TM<sup>3</sup> and 22.6 TM<sup>3</sup> respectively. A special concrete coffer wall was constructed to facilitate excavation and concreting below the river bed level.

#### (viii) Hydro-mechanical works

6 Nos. sluice service gates were erected and commissioned during the year. The erection of spillway gates has been taken up from September, 1985 onwards. Meanwhile, erection of embedded parts and the lining of the silt excluder gallery was taken up and the work is progressing satisfactorily.

Efforts are being made to overcome the shortfall in the works, which occurred in the Power House and Tail Race Tunnel and regular monitoring of the progress of the work is done at the highest level.

It is envisaged that the first unit of the Project be commissioned during June, 1986.

#### (2) Chamera H.E. Project (H.P.)

As reported in the last report, the Agreements with the Canadian parties for the Chamera Project were signed in August, 1984. Since then the various activities had been commenced both in Canada as well as in India.

Development of infrastructure facilities like approach roads to work sites, construction of bridges, buildings—both for residential and non-residential purposes, were taken up. Efforts to obtain necessary clear-

ance for acquisition of forest land are continuing.

**(a) Major Civil Works:  
Dam and Diversion Tunnel**

During the year, construction of Portal on the adit of Diversion Tunnel was completed and 25 M of boring of adit was achieved. The adit to the Diversion Tunnel has since been completed on 20th May '85. As at the end of August, 1985, 194 M of excavation in heading has also been completed.

Contract for grouting of the foundation for the Cofferdam, clearing the common excavation of abutment and Contract for the dam abutment excavation and platform for construction facilities had been awarded and works are in progress.

Drilling and grouting of the foundation for D/S (Left Bank) Cofferdam has since been completed and excavation and filling works on the dam abutment are continuing.

**Engineering**

Engineering for Dam, Power Tunnel, Power House and Switchyard and model studies for dam spillway are in progress.

Most of the construction equipment under Phase-I have been received at site, and the equipment under Phase-II is in the process of various stages of procurement. The progress of execution of Core Packages by M/s. Marine Industries Ltd., and M/s Canadian General Electric Co. for Turbines & Gates and Generators is more or less as per schedule.

**(3) Dul Hasti H.E. Project  
(J&K):**

Control Survey, Reservoir Survey and Material Survey were completed. Regarding detailed Geological Investigations, Drilling has been completed and 442 M of Drifting against a total length of 605 M has also been completed. The measures for land acquisition proceeded according to schedule during the year.

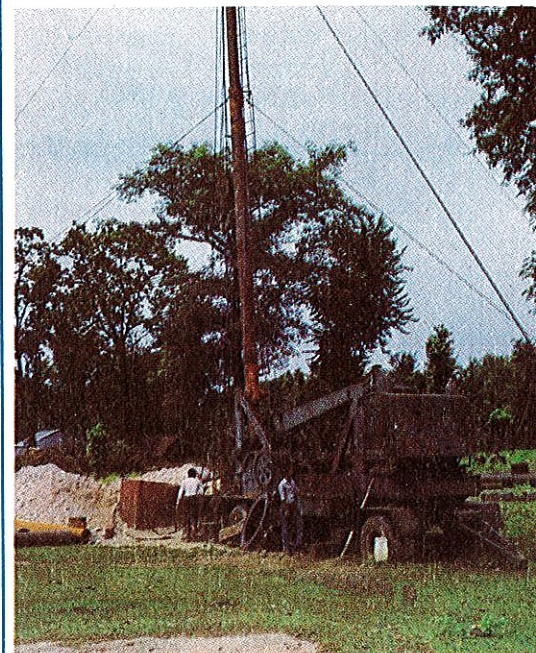
Progress on the formation of the Approach Road to Dam Site, Road to Access Tunnel, Road to Head Race Tunnel, and Surge Shaft was satisfactory during the year. As at the end of July '85, formation cutting on the Approach Road to Dam Site, road to access tunnel, and road to HRT and surge shaft have been completed by 85%, 81% and 63% respectively. The Kishtwar-Dul Road has been made truckable.

As regards the improvement of the Batote-Kishtwar Road, the road was made fit for movement of 30 T Truck-Trailer combination during the year. Further improvement for movement of 60 T Truck-Trailer combination is in progress. This is expected to be completed by December, 1985.

2 Nos. 312.5 KVA DG Sets for construction power were commissioned during the year. On the 100 kms. long 132 KV S/C Transmission Lines, Route Survey has been completed and detailed survey in 55 kms. and stub setting at 10 locations were completed by the end of the year. As at the end of July, 1985,

stub-setting at 42 locations and erection of six Towers have been completed.

**(4) Tanakpur H.E. Project (U.P.)**



*Infrastructure work in progress—Tanakpur.*

The investment sanction for the Tanakpur H.E. Project was issued by the Government of India, in August, 1984. The Project is to be executed at a cost of Rs. 185.62 crores (Gross) and Rs. 178.75 crores (Net). After receipt of investment sanction, development of infrastructural work was taken up.

48 Nos. pre-fab residential units were completed during the year 1984-85. Work on construction of approach roads and Diesel Power House Building commenced during the year. Orders for supply of 5 Nos. Diesel Power sets have also been placed. Work on the construction of 33 KV construction Power Line and

sub-station is in progress and 85% of work has been completed as on August '85. The pre-qualification of contractors for Barrage and Power House Civil Works has been done and a Letter of Intent for Power House Civil Works placed in July '85. Orders for supply of generating equipment were placed on BHEL in January, 1985. The major civil works are scheduled to commence in October, 1985.

The Project is scheduled for completion in a period of 4 years.

**(5) Devighat H.E. Project (Nepal)**

The Project which was commissioned in December, 1983 was handed over to HMG Nepal during the year under report.

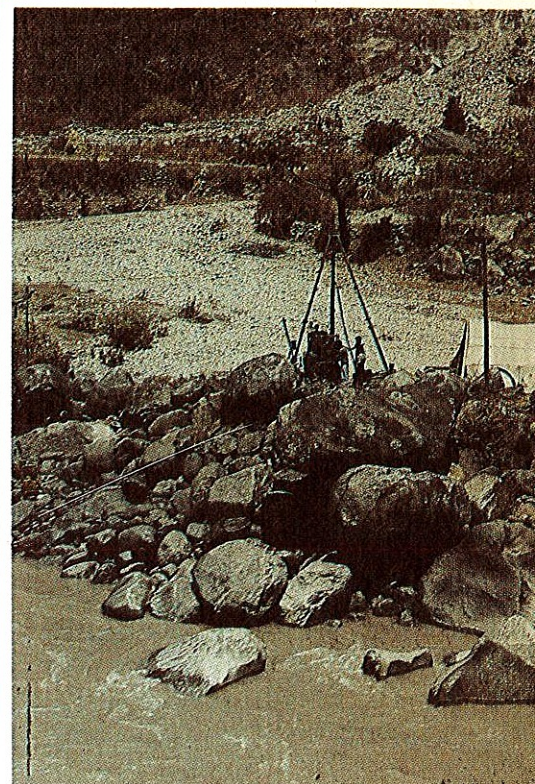
**(6) Koel Karo H.E. Project (Bihar)**

No progress could be made on the construction of the Project due to resistance by the local people against the acquisition of land.

**5. Investigation Projects:**

**(1) Dhauliganga Stage-I (260 MW) (U.P.)**

The investigation works continued during the year under report. The investigations have since been completed and feasibility report prepared in June '85, in collaboration with M/s Swed Power of Sweden. The Feasibility Report has been submitted to CEA in July '85 for techno-economic clearance.

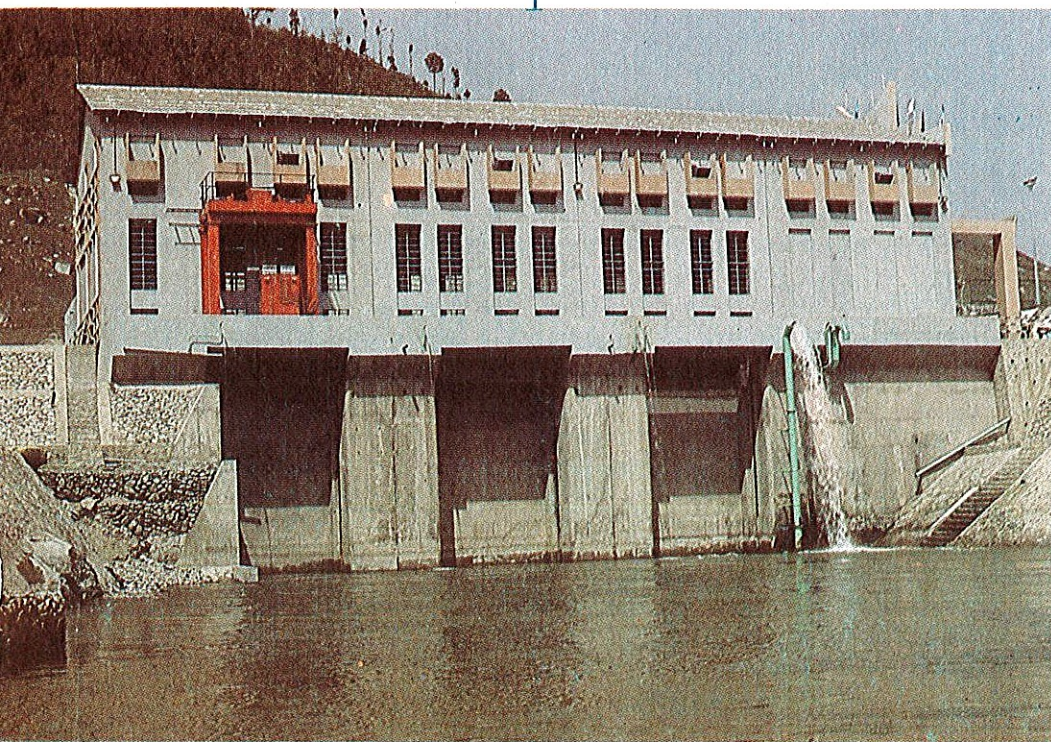


*Drilling in progress at Dhauliganga.*

At present, only the hydrological and meteorological observations are being continued at the project site. A report on Master Plan Development of the Dhauliganga basin showing all the stages was also submitted to CEA during May '85.

**(2) Dhaleswari H.E. Project (120 MW) (Mizoram)**

The investigation works were completed and feasibility report submitted to CEA in October, 1984 for techno-economic clearance. At the site, the hydrological and meteorological observations are being continued.



*Downstream view of power house-Devighat, Nepal.*

(3) **Konkan H.E. Projects (Maharashtra)**

The Corporation has taken up the job of investigations and preparation of feasibility reports in respect of Par, Damanganga, Bav and Sapthalingi H.E. Projects in Maharashtra on behalf of the State of Maharashtra. All the site investigations involving drilling, drifting etc. have been completed and the construction material survey and testing of most of the materials have also been completed. The Detailed Project Reports of Bav and Sapthalingi H.E. Projects are expected to be finalised by September, 1985 and that of Par and Damanganga by December, 1985.

The feasibility reports in respect of Kal H.E. Project (10 MW) and Kumbhe H.E. Project (15 MW) have been submitted to the Government of Maharashtra in May '84.

(4) **New Investigation Schemes:**

(a) **Barah Pumped Storage Scheme in Rajasthan:**

In April '85, the Corporation has taken up the Preliminary Survey/investigations of the 500 MW Barah Pumped Storage Scheme in the Alwar District of Rajasthan, which was entrusted to the Corporation by the Department of Power in February, 1985.

(b) The following projects are

also proposed to be taken up for detailed investigations during 1985-86:

- a) Gouriganga H.E. Project Stage-I (UP)-160 MW
- b) Gouriganga H.E. Project Stage-II (UP)-120 MW
- c) Gouriganga H.E. Project Stage-III (UP)-75 MW
- d) Dhauliganga H.E. Project Stage-II (UP)-180 MW

6. **New Projects proposed to be taken up for execution:**

(1) **Uri H.E. Project (J&K)**

The Project Estimates were techno-economically cleared by CEA for an amount of Rs. 527.05 crores (Gross) and Rs. 516.47 crores (Net) at December, 1983 price level. Taking into consideration the comments/observations

7. **Transmission Works:**

Progress of works on construction of transmission lines is given below:-

Sl. No.	Particulars of Transmission Works	Approved completion date	Progress upto 31st March '85
---------	-----------------------------------	--------------------------	------------------------------

(1) **Transmission lines (Indian portion) associated with Chukha Project.**

220 KV Transmission System March '85

220 KV D/C Phuntsholing - Birpara & Dalkhola-Malda lines had been completed; Birpara-Siliguri, Birpara-Bongaigaon and Siliguri-Dalkhola-Purnea lines had also been completed except for small stretches encountering major river crossings.

of BPE, the estimates have further been up-dated to September, 1984 price level, and a PIB Memo for the Project has been prepared and submitted to the Department of Power on 30.7.1985 for sanction. The total estimated cost of the Project at September, 1984 price level works out to Rs. 723.51 crores (Gross) and Rs. 712.07 crores (Net) including Civil, Electrical and Transmission cost but excluding IDC of Rs. 93.62 crores.

(2) In December, 1984, the Government of India have also transferred Baglihar (3x150 MW), Sawalkot (4x150 MW) and Ratle (170 MW) HE Projects in J&K for execution by NHPC.

Sl. No.	Particulars of Transmission Works	Approved completion date	Progress upto 31st March '85
	400 KV Malda-Farakka	Dec. '85	Detailed Engineering completed. Orders for procurement of line materials have been placed and supplies have commenced. Efforts are being made to complete the line (except for Ganga river crossings) by Dec. '85. The line along with Ganga river crossings is expected to be completed by June, '86.
	220/132 KV Sub-stations & switching-stations at Malda, Siliguri, Purnea, Birpara, Bongaigaon and Dalkhola.	March '85	Detailed engineering connected with these sub-stations/switching stations have been completed.  Supplies of equipment and materials completed. Works for residential and non-residential buildings completed. Foundation works for steel structure completed. All the main equipment have been erected except cabling & commissioning. All the sub-stations and switching-stations would be completed in December, 1985.
	400/220 KV Sub-station at Farakka.	Dec. '85	Sub-station is being constructed in two phases. Phase-I, comprising installation of 1 No. 400/220 KV 315 MVA transformers alongwith terminal equipment for 2 nos. 200 KV bays, is scheduled for completion by Oct. '85. Remaining works for Farakka sub-station covered under Phase-II, are scheduled for completion by March '86.
<b>(2) Jeypore-Talcher Transmission System</b>			
	400 KV Jeypore-Talcher Line	Dec. '87	Pursuant to the decision of the Govt. of India to transfer on ownership basis the construction and management of the Jeypore-Talcher 400 KV Transmission System to your Corporation, agreements for transfer of the Project from O.S.E.B. were executed on 11.1.1985.  Agreement was also concluded with OSEB on 11.1.1985 for construction of this line by OSEB on agency basis on behalf of the Corporation.  Survey work is in progress. Stub-setting on 225 locations and erection of towers on 79 locations against the total of 1094 locations had been completed.
	400/220 KV S/S at Jeypore & Talcher and 400 KV Switching-station at Indravati.	Dec. '87	Suitable locations for installation of sub-station have been identified. Formalities for acquiring land are in progress. Engineering for these sub-stations is also in progress.

Sl. No.	Particulars of Transmission Works	Approved completion date	Progress upto 31st March '85
---------	-----------------------------------	--------------------------	------------------------------

### (3) Salal Transmission System

220 KV S/C Salal- Jammu Line April '85

Survey for 52 Km. out of 56 Km. done during the year (since completed). Stub-setting on 144 locations and erection of towers on 138 locations against a total of 151 locations completed. Stringing of 14 Km. against a total of 56 Km. completed. The line is expected to be completed by Oct., '85.

220 KV D/C Salal-Udhampur line. Oct. '85

Survey work completed, stub-setting on 149 locations and erection of towers on 108 locations against a total of 209 completed. The line is expected to be completed by March, 1986.

### 4. New Transmission Lines

- i) Feasibility report of 400 KV transmission system associated with Uri Project for a total outlay of Rs. 184.30 crores including Rs. 17.86 crores as IDC has been accorded techno-economic clearance by CEA. PIB Memo has been submitted to Administrative Ministry.
- ii) Feasibility report for the Bongaigaon-Nanglam 132 KV line, estimates for which amount to Rs. 720 lacs, has been cleared by CEA.
- iii) Feasibility report for the Bongaigaon-Gaylephug Line amounting to Rs. 488 lacs has also been cleared by CEA. Ministry of External Affairs has sanctioned Rs. 25 lacs for the year 1985-86.
- iv) Revised cost estimates with an outlay of Rs. 222 crores (Net) for 400 KV Transmission System associated with Chamera H.E. Project has also been approved by CEA. Soil investigation on the route of transmission line has been completed. Preliminary studies on electrical design conductor optimisation, tower and foundation and construction methodology have also been completed.
- v) Work on the 132 KV S/C Liematak-Jiribam Transmission Line (II Circuit) has commenced in 1985-86.

### 8. Vigilance Activities:

The Corporation continued to give due importance to the vigilance work during the year under report. Investigations were conducted on the basis of complaints and source information which came to the notice of vigilance organisation. As a result of these investigations, disciplinary proceedings for major/minor penalty were initiated against delinquent officers.

As part of preventive vigilance, surprise inspections and scrutiny of files were carried out during the year under report.

### 9. Use of Hindi:

In accordance with the Official Language Policy of the Govt., all efforts were made during the year for progressive use of Hindi in the Corporation. The Official Language Implementation Committee of Corporate Office met periodically to review the progress made in this direction. Stress was also laid on the implementation of the Annual Programme drawn up for the Corporation.

Six Manuals in use in the Corporation have been translated in Hindi and 36 forms in use have been printed bilingually. Three Hindi workshops were organised during the year to train the employees in Noting and Drafting in Hindi. Steps are also being taken to provide the required staff for Hindi work in the Projects.

**10. Personnel & Industrial Relations:**

**(1) Presidential Directive:**

In exercise of the powers conferred by Article 36 of the Articles of Association of the Corporation, the President of India has issued a Directive stating that as the Corporation has not switched over to payment of Dearness Allowance at Industrial Rates, no revision of any existing pay scales, allowances, perquisites etc. of its Executives should be made without the specific approval of the Department of Power as well as the Ministry of Finance (Bureau of Public Enterprises).

**(2) Industrial Relations:**

During the year under report, the employee-employer relations were generally cordial.

**(3) Personnel Policies:**

Some of the existing Rules were modified where necessary, to meet the requirements of the Corporation and some new policies/schemes were also notified during the year.

**(4) A two-tier scheme of Employees' Participation in Management was notified, which is being im-**

plemented in phases in various Projects of the Corporation.

**(5) Training & Development:**

During the year 1984-85, the Corporation conducted three in-house training programmes including a two-day course on 'Top Management Imperatives of Successful Computerisation', which was attended by the officers of the rank of Chief Engineer and above.

During the period, the Corporation also sponsored 97 Executives and 18 Non-Executives for participating in training programmes/seminars organised by different training agencies. 5 Executives were sponsored for participation in training programmes/seminars abroad connected with hydro power development.

It is proposed to strengthen the Training and Development set-up and provide training facilities to the O&M Personnel of Power Stations, Transmission Lines and to the Personnel handling heavy earthmoving equipment and personnel engaged in other technical areas.

**(6) Technology Transfer and Technical Training Programmes in Canada:**

As reported to you at the last Meeting, under the agreement signed with the Canadian parties for the construction of Chamara H.E. Project, the Canadian parties are to impart Technology Transfer and Technical Training to NHPC personnel for 750 man-months. During the year, 41 employees were sent to Canada for Training under this programme, and training facilities availed for 139 man-months.

**11. Other Financial Aspects:**

**(a) Entertainment:**

The entertainment expenditure incurred during the year was Rs. 12.59 lakhs at Projects owned by the Corporation and Rs. 0.28 lakhs at deposit works and at Projects on agency basis.

**(b) Advertisement & Publicity:**

The expenditure on Advertisement & Publicity amounted to Rs. 27.59 lakhs with the following break-up:-

	(Rs. in lakhs)
1) On Propaganda & Publicity	6.88
2) Advertisement through DAVP	-
3) Advertisement through other sources	20.71



**(c) Guest Houses:**

The expenditure on maintenance of guest houses/field hostels was Rs. 20.67 lakhs.

**(d) Rent, Maintenance & other miscellaneous expenditure of Corporate Office:-**

Following was the expenditure on rent, maintenance of furniture & fixtures etc. in the Corporate Office during the year:-

	(Rs. in lakhs)
i) Rent-Office buildings	62.45
ii) Furniture-Capital Cost	4.96
iii) Office equipment cost	6.36
iv) Communication equipment cost	0.10
v) Maintenance cost of items at (i) to (iv) above.	7.12
vi) Electricity and water charges	1.79
vii) Other administrative expenses including Printing & Stationery, Postage, Telegram, Telephone & Telex	64.79

**(e) Foreign Tours:**

A total amount of Rs. 10.29 lakhs including expenditure in foreign exchange was incurred by the Corporation on foreign travel for the employees of the Corporation.

**(f) Social Overheads:**

Expenditure on maintenance of townships, education and health facilities is as under:-

Projects	(Rs. in lakhs)		
	Township	Education	Health facilities
1. Bairasiul	25.01	4.92	6.54
2. Loktak	35.22	2.02	3.13
3. Corporate Office	-	-	11.73
4. Koel Karo	0.26	0.01	1.07
5. Chukha TCU	-	0.02	6.35
6. Dul Hasti	-	0.11	3.05
7. Chamera	-	0.03	2.06
8. Jeypore-Talcher	-	-	0.05

**12. Auditors:**

For the audit of the Accounts of the Corporation for the year 1984-85, M/s S.L. Khindaria & Co., New Delhi have been reappointed as Statutory Auditors. M/s K.B. Chandna and Co., New Delhi and M/s APS Associates, Calcutta have also been reappointed as Branch Auditors for the year.

**13. Comments on the Qualifications of the Auditors:**

The comments of the Directors on the qualifications made by the Auditors in their Report are given in Annexure-I to this Report.

**14. Particulars of Employees:**

Information as per Section 217 (2A) of the Companies Act, 1956 read with the Companies (Particulars of employees) Rules 1975, is given in Annexure-II forming part of this Report.

**15. Directors:**

Pirzada Ghulam Nabi relinquished charge as CMD on 28.2.85 (AN). Shri C.S. Hukmani and Shri A.N. Singh ceased to be Directors on the Board of Directors of the Corporation w.e.f. 25.3.85 and 1.5.85 respectively. The Board place on record their appreciation of the valuable services rendered by Pirzada Ghulam

Nabi, Shri A.N. Singh and Shri C.S. Hukmani. Shri B.R. Oberoi, took over as Chairman & Managing Director of the Corporation w.e.f. 28.2.85 (AN). Shri K. Madhavan, Member (D&R), C.W.C., and Shri T.C. Agrawal, Member (HE), CEA were appointed as Directors w.e.f. 1.5.85.

**16. Acknowledgements:**

The Board acknowledge with thanks the guidance and help extended by the various Departments of the Government of India, particularly the Ministry of Energy (Department of Power), Ministry of Finance, Ministry of External Affairs, the Ministry of Industry & Company Affairs (Department of Company Affairs), Embassy of India in Nepal, the Central Electricity Authority, the Central Water Commission, CSMRS, the Survey of India and the Geological Survey of India. Thanks are also due to the HMG Nepal, CIDA, EDC, and SNC/Acres of Canada, SWED POWER and SIDA of Sweden; the State Governments of West Bengal, Manipur, Mizoram, Jammu & Kashmir, H.P., U.P., Bihar, Sikkim, Maharashtra, Orissa and the State Electricity Boards who have been co-operating with us in our work in their States. But for the help, assistance and co-operation given by these and other agencies, it would not have been possible for the Corporation to achieve the progress registered so far.

The Board of Directors are also grateful to the Comptroller and Auditor-General of India, the Auditors, and the Bankers for their valued co-operation.

New Delhi,  
27th September, 1985.

The Board also take this opportunity to place on record their recognition and appreciation of the sincere and hard work done by the employees of the Cor-

poration at all levels and have no doubt that they will attain still better levels of performance in the years to come.

For and on behalf of the  
Board of Directors

B.R. Oberoi  
Chairman & Managing  
Director

**ANNEXURE-I**

**COMMENTS ON THE QUALIFICATIONS CONTAINED IN THE AUDITORS' REPORT, 1984-85**

<b>Para in Auditors' Report</b>	<b>Comments</b>
<b>II</b>	
5 (i)	No adjustment has been done as the treatment to be carried out in the accounts for collapse of 35 M of tunnel of Loktak Project has been referred to the Ministry of Irrigation and Power for advice. The adjustment, if any, will be done after the receipt of the advice of Government in this regard.
5 (ii)	Provision has not been made as the allowance was sanctioned after the cut off date for creating the liabilities in the accounts of various projects/units.
5 (iv)	The reconciliation is in progress and will be completed in 1985-86.
5 (v)	The provision for penal interest has not been made, pending receipt of decision from the Government.
5 (vi)	Inter-unit transfer balances are being periodically reconciled. The unadjusted advices are carried forward and adjusted in subsequent year.
5 (vii)	The Fixed Assets/Stores and other assets of Devighat Project were handed over to the representatives of HMG, Nepal under the direction and instructions of Indian Embassy at Kathmandu.
5 (viii)	The surplus assets & stores were sold/auctioned as approved by the Monitoring Committee for Devighat Project in which Government is represented.
<b>Para in Annexure to Auditors' Report</b>	
A (i)	The situational details will be indicated in respect of movable assets. The physical verification of fixed assets at various sites will also be done in a phased manner and discrepancies, if any, adjusted.
A (iii)	The discrepancies/shortages etc. are under reconciliation and will be adjusted after full investigation.
A (vi)	Emphasis has been given to follow the laid down procedure strictly.
A (xi)	Steps are being taken to strengthen the Internal Audit suitably and speed up the follow-up action.
A (xiii)	Due to difficulties in communication from the units situated in remote areas, there has been slight delay in some cases in remitting the Provident Fund money to the Trust.
B (ii)	Internal Control System exists in the Corporation. However, efforts are being made to strengthen the system wherever shortcoming is noticed.

**NOTE:** Also subject to Explanatory Notes on Accounts and Accounting Policies.

INFORMATION REQUIRED UNDER SECTION 217(2A) OF THE COMPANIES ACT, 1956  
READ WITH COMPANIES (PARTICULARS OF EMPLOYEES) RULES, 1975.

Name & Designation	Remuneration (Rs.)	Nature of employment (Contractual or otherwise)	Qualification & Experience	Date of commencement of employment in NHPC	Age (Years)	Last employment held
1	2	3	4	5	6	7
<b>(A) Particulars of employees employed throughout the financial year who were in receipt of remuneration not less than Rs. 36,000/- p.a.</b>						
S/Shri						
Abbey, V.K. Dy. Manager	37,396	Regular	B.Sc. Engg. (Mech.) (14 years)	12.8.81	35	Resident Engineer, Western India Erectors Ltd., Pune.
Aggarwal, A.K. Dy. Manager	40,746	Regular	B.A., PG Dip. in Pers. Mngt. & Labour welfare (14 years)	18.2.81	35	Sr. PAO., Cement Corporation of India Ltd.
Aggarwal, A.K. Engineer	36,623	On deputation from Haryana Irrigation Department.	B.E. (Civil) (9 years)	27.9.79	30	A.E., Haryana Irrigation Department
Aggarwal, A.R. Manager	58,824	Regular	B.E. (Elect.) (13 years)	18.6.77	37	A.E., U.P.S.E.B.
Aggarwal, S.K. Dy. Manager	52,482	Regular	B.Tech. (Elect.) (12 years)	13.6.80	37	A.E., Military Engg. Services
Amar Nath Sr. Manager	71,156	Regular	B.A., SAS (28 years)	20.09.76	53	Section Officer, Indian Audit & Accounts Deptt.
Anantha. A. Dy. Manager	45,197	Regular	B.E. (Mech.) (7 years)	06.06.77	30	AE, Haryana Irrigation Department.
Apparao, Y.N. Manager	50,810	Regular	B.E. (Civil) M.E. (Hydropower), (16 years).	01.08.77	39	Asstt. Engineer, CWC
Arora, V.K. Asstt. Manager	39,570	Regular	B.Sc., ACA (12 years)	04.10.78	31	C.A., Vishal Private Ltd. New Delhi
Bahadur, A.K. Dy. Manager	43,280	On deputation from U.P.S.E.B.	M.Sc. Engg. (Elect.) (11 years)	02.11.79	36	Asstt. Engineer, U.P.S.E.B.
Bajaj, V.M. General Manager	88,439	Regular	B.E. (Civil) (29 years)	10.05.79	52	Director (U.T.), CWC
Bakshi, R.K. Asstt. Manager	39,141	Regular	M.A. (28 years)	04.11.78	50	Supdt., Office of C&AG of India
Bal Mukund Manager	48,665	Regular	B.Sc., Engg. (Mech.) (14 years)	16.12.78	36	Asstt. Engineer, EIL
Bandopadhyaya, M.R. Sr. Manager	60,558	Regular	M.Sc., (Applied Geology) (23 years)	29.12.80	48	Geologist (Senior), Geological Survey of India
Banerjee, P.K. Dy. Manager	39,194	Regular	B.Sc., Engg. (Mech.) (8 years)	09.09.77	32	Officer Trainee, IOC
Bansal, L.K. Asstt. Manager	41,063	Regular	M.E. (Civil) (7 years)	06.12.77	31	—
Bansal, R.C. Manager	53,952	Regular	SAS (42 years)	21.09.78	58	Audit Officer, Office of the Director of Audit, Central Revenue, Delhi
Basu, M. Geologist	39,296	Regular	M.Sc. (Applied Geology) (6 years)	11.10.82	32	Geologist, SWRC, Ground water Department, Rajasthan
Bhalla, S.N. Dy. Manager	44,506	Regular	B.A. (16 years)	30.11.79	50	Research Officer, Central Vigilance Commission
Bhandari, S.P. P.S.	36,233	Regular	B.A. (25 years)	30.06.79	44	Steno, Director General of Civil Aviation
Bhardwaj, H.C. Chief Engineer	88,596	On deputation from HPSEB	B.Sc. Engg. (Civil) (26 years)	10.02.76	45	Executive Engineer, HPSEB

1	2	3	4	5	6	7
Bhardwaj, Dr. S.C. Sr. Medical Officer	41,515	Regular	M.B.B.S. (9 years)	15.12.78	38	Asstt. Medical Officer, Northern Railways, New Delhi
Bhardwaj, S.R. Sr. Manager	48,019	Regular	M.A. (Eng.) Diploma in Journalism, Diploma in Marketing and Sales Mgt. (24 years)	11.09.81	42	Public Relations Officer, National Fertilizers Ltd.
Bhargava, D.P. Asstt. Manager	40,899	Regular	B.E. (Elect.) (6 years)	20.2.79	28	—
Bhargava, P.K. Asstt. Manager	40,599	Regular	B.E. (Elect.) DIIT (Power Appl. & Systems) Diploma in MM (5 years)	16.06.79	27	—
Bhat, N.D. Asstt. Manager	42,463	Regular	B.Com., S.A.S. (27 years)	18.7.77	49	Section Officer, O/o Chief Auditor, Central Railway
Bhatia, V.S. O.S.	40,499	Regular	B.A. (33 years)	01.10.77	55	Assistant, Department of Power, Govt. of India
Bhatnager, Amod S.P.S.	42,324	Regular	I.Sc. (22 years)	23.07.76	43	Stenographer, UPSEB
Bhatnagar, Dr. M.S. Sr. Medical Officer	44,191	Regular	M.B.B.S. (18 years)	27.08.81	43	Medical Officer, Neoli Sugar Mills, Allahabad
Bhattacharjee, J. Dy. Manager	54,653	Regular	B.Sc. AICWA., SAS (30 years)	24.01.80	49	Accounts Officers, IFC, Govt. of Manipur
Bhattacharjee, M.N. Sr. Manager	67,094	Regular	M.A. (Eco), PG Diploma in Pers. Mgt. (31 years)	30.12.81	53	Asstt. Personnel Manager, Bharat Aluminium Co. Ltd.
Bhugra, R.L. Accounts Officer	38,466	Regular	B.A., SAS (28 years)	10.06.77	53	Accountant, Ministry of Railways
Binepal, A.S. Dy. Manager	45,269	Regular	B.E. (Mech.) (17 years)	19.05.78	44	Shift Engineer, Beas Project Talwara
Boni, O.N. Manager	44,345	Regular	B.Sc. (Civil) (24 years)	29.07.77	45	Executive Engineer, Ministry of Energy
Chadha, I.S. Accounts Officer	41,092	Regular	B.A. SAS (35 years)	07.12.82	57	Section Officer, AG, Haryana
Chadha, K.C. Dy. Manager	41,243	Regular	B.Sc. Engg. (Elect.) (9 years)	05.08.77	33	Supervisor, CEA
Chadha, N.K. Accounts Officer	39,046	Regular	B.A. AICWA (4 years)	07.06.82	33	Junior Manager (F&A) Rourkela Steel Plant
Chadha, Dr. R.K. Asstt. Chief Medical Officer	45,644	Regular	M.B.B.S. (17 years)	09.09.80	39	Medical Officer, Min. of Health, Govt. of India
Chakraborty, A.C. Asstt. Manager	37,648	Regular	B.A., SAS, (32 years)	03.03.76	52	Section Officer, A.G., Manipur
Chakraborty, D. Dy. Manager	38,872	Regular	M.Com. AICWA (14 years)	09.06.78	48	Sr. Accountant, M/s NMDC Ltd. Bacholi (MP)
Chaku, B.L. Asstt. Manager	39,753	Regular	B.Sc., S.A.S. (28 years)	16.08.80	52	Accounts Officer, A.G. J&K
Chanana, A.K. Asstt. Manager	39,467	Regular	B.E. (Elect.) (13 years)	31.12.82	38	Asstt. Engineer, PDD, J&K
Chandra Shekhar, P. Asstt. Manager	49,558	Regular	B.E. (Elect.) (10 years)	27.01.83	37	Dy. Engr. B.E.L. Bangalore
Chandra Sekharan, A. Manager	55,648	Regular	B.E. (Civil) (15 years)	20.11.78	40	A.E. PWD, Madras
Chauhan, Maj. S.S. Manager	39,433	Regular	Degree in Civil Engg. (20 years)	19.03.79	41	Major in Indian Army
Chauhan, V.P.S. Asstt. Manager	51,663	Regular	B.E. (Civil) (5 years)	08.02.80	26	Engineer, M/s Ahuja Kashyap (P) Ltd., New Delhi
Chauhan, S.K. Asstt. Manager	37,768	Regular	B.E. (Civil) (9 years)	11.09.78	32	SO, B.S. Project

1	2	3	4	5	6	7
Chhabra, C.P. Chief Engineer	73,206	On deputation from PSEB	B.E. (Elect. & Mech.) (32 years)	08.08.83	55	Suptg. Engineer, Bhakra Beas Management Board
Chopra, M.L. Sr. Manager	55,101	Regular	B.A., P.G. Diploma in Public Administration (25 years)	27.11.81	53	Liaison Officer, Chukha Hydel Project, Bhutan
Chopra, Opinder Dy. Manager	42,631	Regular	B.A., P.G. Diploma in Labour Laws, Lab. Welf. & Pers. Mgt. (20 years)	19.04.79	37	Office Supdt. (Pers.) BALCO
Choudhuri, N.K. Dy. Manager	40,779	Regular	A.M.I.E. (Civil) (15 years)	15.07.81	38	Resident Engr. NBCC.
Choudhury, B.K. Dy. Manager	37,313	Regular	B.E. (Civil) (19 years)	18.11.81	38	Executive Engineer, PWD, Govt. of Tripura
Choudhry Dr. G.H. Sr. Medical Officer	41,482	On deputation from Ministry of Health & Family Welfare	M.B.B.S. (14 years)	15.05.78	39	Medical Officer Ministry of Health & Family Welfare
Chummer, P.P. Asstt. Manager	38,600	Regular	B.Com., SAS. (20 years)	31.08.81	55	Accounts Officer, A.G. Kerala
Dandecha, B.V. Asstt. Manager	41,001	Regular	B.E. (Mech.) (6 years)	22.02.79	33	—
Darde, P.N. Dy. Manager	48,471	Regular	B.E. (Civil) M. Tech. (Water Resources) (17 years)	30.01.80	44	Lecturer, Delhi College of Engineering
Das, Felix, Dy. Manager	46,138	Regular	B.E. (Elect.) (15 years)	10.12.77	40	S.D.O. Beas Construction Board
Dass, S. Dy. Manager	43,302	Regular	B.E. (Civil) PG Dip. in Water Resources & Development) (15 years)	24.03.81	38	S.D.O., Irrigation Deptt. Govt. of Assam
Datta, K.P. Adm. Officer	36,168	Regular	B.Sc., P.G. Dip. in PM & IR, PG Dip. in Public Relations (9 years)	15.03.82	31	Captain in the Army
Deorari, B.D. Dy. Manager	41,727	Regular	M.A. (11 years)	23.05.81	47	Dy. Manager, (Proc.), DSIDC
Desai, V.T. Research Officer	49,380	Regular	M.Sc. Physics (8 years)	28.02.85	30	Research Asstt., Central Water & Power Research Stn. Poona
Dhar, K.K. Asstt. Manager	37,834	On deputation from PWD, J&K	Dip. in Mech. Engg. (30 years)	20.02.84	52	Executive Engineer, PWD, J&K
Dhar, S.K. Asstt. Manager	38,820	On deputation from PWD, J&K	B.E. (Mech.) (17 years)	27.01.83	41	Executive Engineer, PWD, J&K
Dhillon, H.S. Dy. Manager	38,908	On deputation from H.P.S.E.B.	Dip. in Civil Engg., A.M.I.E. (23 years)	23.05.81	45	A.E.E., H.P.S.E.B.
Divatia, (Miss) E. Chief Engineer	68,276	Regular	B.E. (Civil) M. Tech. (26 years)	22.3.79	48	Deputy Director, CWC
Dodeja, S.K. Manager	41,438	Regular	AMIE (Mech.) AMACSI (16 years)	12.10.78	36	AEE, Border Roads Organisation
Dubedi, B.D. Engineer	48,815	On deputation from UPSEB	Dip. in Mech. Engineering (16 years)	10.12.76	34	Jr. Engineer, UPSEB
Dubey, S.N. Engineer	36,674	Regular	B.Sc. (Engg.) (Elect.) (5 years)	17.06.82	31	Asstt. Engineer, Meghalaya State Elect. Board
Dwivedi, K.N. Asstt. Manager	42,322	Regular	M.A. (Eco.) MSW (18 years)	22.12.81	44	AOS, BHEL, New Delhi
Easwar, I. Asstt. Manager	37,581	Regular	M.E. (Soil Mech. & Foundation) (5 years)	01.02.80	28	Engineer, Mody & Associates

1	2	3	4	5	6	7
Gangopadhya, A.K. Sr. Manager	51,153	Regular	B.E. (Civil) (19 years)	10.09.81	39	Executive Engineer, PWD Government of Goa, Daman & Diu (Panaji)
Garg, H.R. Asstt. Manager	39,276	On deputation from PWD (Irrigation), Punjab	A.M.I.E. (Civil) (20 years)	28.02.80	43	Sectional Officer (Civil) PWD (Irrigation) Punjab
Garg, S.P. Engineer	36,812	On deputation from CWC	B.Sc. Engg. (Civil) (7 years)	31.03.84	34	Extra Assistant Director, CWC
Gaur, B.N. Photographic Officer	42,849	Regular	Intermediate, Certificate in Photography (21 years)	12.04.79	44	Photographer, Beas Dam, Punjab
Gautham, P.S. Asstt. Manager	38,596	Regular	B.Sc. Engg. (Elect.) (15 years)	07.08.77	42	Shift Engineer, BSL Project
Ghosh, L.N. Manager	48,690	Regular	B.Com, M.B.A. (Fin.), Dip. in Budgetary & Fin. Control, P.G. Dip. in Pers. Mgt., Dip. in Data Processing (29 years)	01.10.81	40	Dy. Accts. Manager, MMTC Ltd.
Ghosh, M.K. Sr. Manager	59,710	Regular	B.E. (Civil) (24 years)	23.02.79	46	Executive Engr. Border Roads Organisation
Gianchandani, M.L. P.S.	36,997	Regular	B.A. (24 years)	01.06.79	41	Steno, Deptt. of Power Ministry of Energy
Goel, M.K. Asstt. Manager	39,164	Regular	B.Tech. (Elect.) (5 years)	11.03.80	28	Trainee Engineer, Ralli Chemicals Ltd., Kanpur
Goela, Y.S. Asstt. Manager	42,788	Regular	B.Sc. Engg. (Elect) (18 years)	01.01.77	36	—
Gothra, Maj. G.S. Manager	55,310	Regular	Degree in Engg. (Civil), LL.B. (21 years)	12.03.79	48	Maj. in Indian Army
Govindarajalu, V. Asstt. Manager	46,491	Regular	B. Tech. (Mech.) (4 years)	09.06.80	30	—
Goyal, J.M. Manager	56,152	Regular	B.A. SAS (Rlys) (33 years)	15.04.78	53	Accounts Officer, NMDC Ltd.
Goyal, P.P. Admn. Officer	42,815	Regular	Matric (31 years)	23.05.80	47	P.A. in CW & PC
Goyal, T.K. Dy. Manager	49,081	Regular	B.E. Mech., AMIE (C) (17 years)	22.04.81	40	Shift Engineer, Beas Project, Talwara
Grover, S.K. Dy. Manager	40,019	Regular	B.E. (Mech.) AMIE (Civil) (12 years)	04.03.81	37	Asstt. Resident Engr. UP Rajakiya Nirman Nigam Ltd.
Gulati, J.K. Asstt. Manager	47,561	Regular	B.A. (Hons.), ACA, (8 years)	16.11.78	34	Accountant, M/s Jenson & Nicholson, New Delhi
Gulati, Maj. V. Manager	59,864	Regular	AMIE (Mech.) (18 years)	01.03.80	38	Maj. in Indian Army
Gupta, Ashok Dy. Co. Secy.	44,613	Regular	B.Sc. (Hons.), LL.B., DPM, ICWA (Inter), ACS. (10 years)	16.11.82	32	Co. Secy., Rajasthan State Seeds Corpn. Ltd., Jaipur
Gupta, A.K. Asstt. Manager	38,857	Regular	B.Sc. Engg. (Mech.) (9 years)	15.05.78	32	Supervisor, Salal Project, Govt. of India
Gupta, A.K. Asstt. Manager	50,245	Regular	B.E. (Hons.) (Mech.) (8 years)	24.11.77	29	Apprentice (Ind. Engg.) Hindustan Brown Boveri Ltd.
Gupta, B.B. Engineer	43,636	On deputation from PWD J&K	B.E. (Mech.) (14 years)	15.05.78	36	A.E. Salal Project, Govt. of India
Gupta, D.K. Engineer	42,640	On deputation from J&K Civil Works Deptt.	B.E. (Mech.) (16 years)	11.09.80	39	A.E., J&K Govt.
Gupta, G. Asstt. Manager	40,994	Regular	B.Sc., Engg. (Elect.) (7 years)	19.03.79	29	Supervisor, Salal Project

1	2	3	4	5	6	7
Gupta, Dr. G.C. Asstt. Chief Medical Officer	54,194	Regular	M.B.B.S. (15 years)	24.04.81	38	Maj. in Indian Army
Gupta, H.R. Accounts Officer	36,288	Regular	B.Com. LL.B. ICWA (Lond) (31 years)	07.05.81	53	Section Officer, Office of A.G. Simla
Gupta, Dr. J.P. Asstt. Manager	44,828	Regular	M.A. Ph.D. Prabhakar (Hons. in Hindi) (32 years)	15.11.78	52	Asstt. Education Officer, Central Hindi Directorate
Gupta, K.C. Manager	38,164	On deputation from Mech. Engg. Deptt. J&K	B.E. (Mech.) (20 years)	04.06.84	40	S.E., Mech. Engg. Deptt. J&K,
Gupta, M.L. Sr. Manager	62,744	Regular	B.Sc. Engg. (Mech.) (18 years)	29.04.80	40	Dy. Manager, BHEL
Gupta, O.P. Manager	53,189	On deputation from HPSEB	B.Sc. Engg. (Civil) (23 years)	04.04.84	46	Exe. Engr., HPSEB
Gupta, P.K. Manager	59,703	On deputation from Punjab Irrigation works	B.E. (Elect.) (17 years)	12.04.77	40	S.D.O. Punjab Irrigation Works
Gupta, P.K. Dy. Manager	42,166	Regular	B.E. (Civil) (17 years)	10.07.81	41	Asstt. Director, Central Water Commission
Gupta, T.C. Asstt. Manager	45,590	Regular	B.Sc. Engg. (Mech.) (6 years)	15.07.78	35	Technical Asstt., Ministry of Energy, Govt. of India
Gupta, V.K. Manager	51,924	Regular	B.E. (Civil) Hons. (19 years)	10.05.78	41	Dy. Director, Central Hydroelectric Projects Control Board
Gupta, V.K. Dy. Manager	39,504	Regular	B.Sc. Engg. (Elect.) (12 years)	30.01.81	37	Engineer, S.A.E. India Ltd.
Gupta, V.K. Dy. Manager	39,064	Regular	B.Sc. Engg. (Civil) (7 years)	09.04.79	29	Graduate Engg. Trainee, IOC
Handa, A.P. Asstt. Manager	39,116	Regular	B.Com., ACA., (8 years)	11.06.82	30	Dy. Manager (A/cs), M/s Nuchem Plastics Ltd., Faridabad
Handa, M.K. Dy. Manager	39,076	On deputation from PWD, H.P.	B.Sc. Engg. (Civil) (9 years)	30.12.81	29	A.E., PWD, H.P.
Hashia, M.L. Sr. Manager	45,829	Regular	B.E. (Civil) (25 years)	23.07.81	47	Executive Engineer, PWD, J&K
Iyer, S.G. Dy. Manager	48,460	Regular	M.A. Dip. in PM&IR (18 years)	22.12.81	38	Admn. Officer, N.B.C.C.
Jaggi, A.L. Chief Engineer	63,157	Regular	B.Sc. Engg. (Elect.) (23 years)	20.01.78	45	Supdtg. Engineer, Baira Siul HE Project, Govt. of India
Jain, A.K. Chief (Accounts)	66,525	Regular	B.Com., ACA (16 years)	28.11.78	39	Dy. Accounts Manager, IFFCO, New Delhi
Jain, Balram Asst. Manager	36,629	Regular	A.M.I.E. (Mech.) (18 years)	31.01.77	39	Sectional Officer, Baira Siul Project
Jain, N.C. Dy. Manager	39,645	On deputation from Irrigation Deptt. Government of Rajasthan	B.E. (Civil) (18 years)	25.09.79	43	S.D.O. & A.D.E., Irrigation Deptt. Govt. of Rajasthan
Jain, P.K. Dy. Manager	45,824	On deputation from Central Board of Irrigation and Power	B.Sc. Engg. (Elect.) P.G. Dip. in Business Mngt. & Industrial Admn. (11 years)	26.04.77	35	Asstt. Publication Officer, Central Board of Irrigation & Power
Jain, P.P. Chief (P&A)	79,177	Regular	M.A. LLB. Diploma in Labour Laws, Labour Welfare & Pers. Mgt. (32 years)	26.10.78	55	Manager (Personnel) BHEL
Jain, S.L. Dy. Manager	38,190	Regular	M.E. (Civil) (14 years)	01.07.80	42	A.E., CWC
Jain, T.C. Chief Engineer	75,901	Regular	B.Sc. Engg. (Elect.) (29 years)	15.07.77	52	Deputy Director, CEA
Jain, T.C. S.P.S.	41,223	Regular	B.A. (Hons.) (30 years)	08.06.77	54	P.A. in Ministry of Energy
Jain, V.K. Asstt. Manager	44,154	Regular	B.E. (Elect.) (11 years)	01.08.77	34	Section Officer, C.E.A.



1	2	3	4	5	6	7
Jamwal, S.S. Dy. Manager	40,217	Regular	B.E. (Elect.) (16 years)	09.12.75	39	Asstt. Engineer, PDD, J&K
Jethwani, (Miss) J. Dy. Manager	43,938	Regular	B.A., P.G. Dip. in Advtg. & PR, PG Dip. in Journalism (9 years)	27.07.78	33	Asstt. Products Manager, Modern Bakeries
Jir, P.N. S.P.S.	41,509	Regular	B.A. Diploma in Industrial Relations & Personnel Management (29 years)	19.02.77	51	P.S., Railway Board
Johri, S.K. Manager	40,984	Regular	M.A., M.S.W. (20 years)	20.03.78	44	Asstt. Personnel Officer, Hindustan Steel Works Corporation Ltd.
Jose, P.C. Dy. Manager	45,192	Regular	B.Sc. Engg. (Mech.) (13 years)	24.12.79	38	Extra Asstt. Director, CWC
Joshi, K.B. Accounts Officer	56,778	Regular	M.A. (Econ.), SAS (19 years)	16.10.78	40	J.A.O., C.C.A./CBEL, New Delhi.
Joshi, L.D. Asstt. Manager	42,924	Regular	M.A. SAS (30 years)	12.03.79	52	Section Officer, AG., H.P.
Joshi, V.K. Chief Engineer	64,771	On deputation from Deptt. of Irrigation, Govt. of U.P.	B.E. (Civil) (32 years)	31.03.79	54	Director, CWC
Kachroo, M.L. Dy. Manager	48,018	On deputation from PWD, J&K	B.Sc. Engg. (Civil) (19 years)	15.05.78	45	Executive Engineer Salal Project
Kailah, K. Dy. Manager	48,340	Regular	B.E. (Elect.) (12 years)	29.05.81	48	J.E., NGEF Ltd. Bangalore
Kalgaonkar, S. Asstt. Manager	36,242	Regular	B.E. (Mech.) (4 years)	14.04.80	27	—
Kalsi, J.S. Dy. Manager	48,371	Regular	Diploma in Civil Engg., B.A. (28 years)	26.12.78	51	Executive Engineer HPSEB
Kanjlia, V.K. Manager	55,159	Regular	B.Sc. Engg. (Elect) M.Sc. Engg. (15 years)	08.05.79	39	Asstt. EXE. Engr. PSEB
Kanwar, B.S. Chief Project Manager	57,563	Regular	B.Sc. Engg. (Elect.) (22 years)	26.06.81	43	Executive Engineer H.S.E.B.
Kanwar, R.S. Dy. Manager	46,724	On deputation from HPSEB	B.Sc. Engg. (Elect.) P.G. Dip. in Water Resources (16 years)	12.06.78	40	Assistant Engineer, HPSEB
Kapil, A.K. Dy. Manager	40,032	Regular	A.M.I.E. (C) Dip. in Civil Engg. (23 years)	10.07.81	42	Asstt. Manager, HPSEB
Kapoor, V.K. Dy. Manager	40,214	Regular	B.Sc. Engg. (Civil), PG Dip. in Hydel Power Development (Norway) (8 years)	16.05.77	30	J.E., DDA
Kapur, Guljit Asstt. Manager	46,317	On deputation from PSEB	B.Sc. Engg. (Elect.) (13 years)	18.04.83	34	A.E.E., PSEB
Kapur, G.K. Asstt. Manager	38,108	Regular	B.A. SAS. (27 years)	20.04.78	51	Section Officer, AGCR
Kapur, J.N. Dy. Manager	49,875	Regular	M.A.LL.B., SAS (27 years)	07.02.81	55	Audit Officer, Northern Rly.,
Kapur, Kamal Dy. Manager	44,693	Regular	B.Sc. Engg. (Elect.) (11 years)	06.08.77	34	Supervisor, CEA
Kapur, K.K. S.P.S.	38,866	Regular	B.A. (27 years)	01.06.79	45	P.A., Deptt of Power, M/o Energy.
Kapur, S.K. Dy. Manager	54,781	Regular	B.A., LL.M. (20 years)	19.02.77	45	Assistant, Ministry of Railways.

1	2	3	4	5	6	7
Kapur, V.K. Manager	46,135	Regular	M.Tech. (Civil) (14 years)	07.11.78	39	AEE, Hindustan Prefab Ltd.
Kashyap, B.R. Dy. Manager	39,040	On deputation from PWD, Punjab.	B.E. (Civil) (16 years)	04.10.79	40	AE, PWD, Punjab.
Khanna, M.N. Dy. Manager	41,448	Regular	B.E. (Mech.) (16 years)	27.03.79	38	A.E.E., Border Roads Development Board.
Khanna, P.D. P.S.	36,090	Regular	Matric (28 years)	18.06.77	49	Stenographer, Central Board of Irrigation & Power
Khar, P.N. General Manager	68,082	Regular	B.E. (Civil), M.E., M.I.E., M.I.A.H.R. (29 years)	15.05.78	49	Supdtg. Engineer, Salal HE Project, Govt. of India.
Khazanchi, R.N. Manager	42,255	On deputation from PWD, J&K.	B.E. (Civil) (20 years)	03.09.83	43	Executive Engineer, PWD, J&K.
Khosla, C.P. Dy. Manager	48,993	Regular	B.A., P.G. Dip in PM&IR (26 years)	07.09.79	55	Personnel Officer, NTPC
Khunger, J.N. Sr. Manager	38,173	On deputation from Irrg. Deptt. Govt. of Punjab.	B.Sc. Engg. (Civil) (24 years)	06.08.77	45	Executive Engineer, Beas Project
Kishore, B. Engineer	37,216	Regular	A.M.I.E. (Mech.) (16 years)	24.01.79	37	Sr. Draftsman, Western Railways.
Kochar, J.N. Sr. Manager	41,242	On deputation from Office of D.G. Border Roads.	B.A. (25 years)	10.08.81	49	Civilian Officer Gr. I Office of D.G. Border Roads.
Kotwal, S.L. Manager	36,482	On deputation from PWD, J&K	B.E. (Civil) (20 years)	15.05.78	43	Executive Engineer, Salal H.E. Project, Govt. of India.
Koul, Bhushanji Engineer	42,244	On deputation from Lower Jhelum Hydrel Project, (J&K)	B.E. (Mech.) (16 years)	12.12.80	37	Asst. Engineer, Lower Jhelum Hydel Project
Koul, B.N. Dy. Manager	50,695	Regular	B.A., SAS (35 years)	02.09.81	54	A.O. Office of A.G. (J&K).
Krishna Mohan Sr. Manager	46,540	Regular	M.A. (Labour & Social Welfare) (21 years)	04.06.78	47	Dy. Mgr. (Personnel), Bharat Coking Coal Ltd.
Krishnamurthy, M. Sr. Manager	55,826	Regular	B.E. (Elect.), Sr. Dip. in German, Dip. in Russian. (20 years)	29.06.81	44	Dy. Mgr., NTPC
Krishnamurthy, R. Dy. Manager	44,969	Regular	B.Sc., SAS, AICWA, ACS (Inter) (15 years)	01.07.81	40	Sr. Cost Accountant, Mineral Exploration Corporation Ltd.
Kumar, Atul Engineer	36,003	Regular	B.E. (Civil) (4 years)	01.05.81	26	Graduate Trainee, S.K. Cement Works, Rajasthan.
Kumar, R. Asst. Manager	44,868	Regular	B.E. (Elect.) (8 years)	04.03.83	30	Asstt. Engineer, U.P.S.E.B.
Kumar, S.K. Dy. Manager	48,361	Regular	B.Sc. Engg. (Mech.) (15 years)	04.08.77	40	Shift Engineer, B.S.L. Project
Kumar, V. Engineer	38,322	Regular	B.Sc. Engg. (Elect.) (8 years)	03.06.82	32	J.E., R.S.E.B.
Kunjayappan, M.V. Manager	50,434	Regular	B.Sc. Engg. (Civil) (19 years)	01.01.77	45	Asstt. Executive Engineer, Loktak H.E. Project, Govt. of India
Kunji, N.P.R. P.S.	36,628	Regular	S.S.L.C. (27 years)	01.06.79	50	Steno, Ministry of Finance.
Lal, J.G. Asstt. Manager	42,186	Regular	B.Sc., MBA, LLB (8 years)	20.12.82	32	Asstt. Trg. Officer, P&D India Ltd. Sindri (Bihar).
Lal, R.P. Dy. Manager	42,632	Regular	B.Sc. Engg. (Elect.) (17 years)	30.11.81	39	A.E.E., UPSEB.
Lalitha, (Mrs.) O.R. Dy. Manager	42,070	Regular	B.E. (Civil) (13 years)	02.06.80	37	Asstt. Engr., Central Water Commission.

1	2	3	4	5	6	7
Lomas, A.K. Dy. Manager	53,031	Regular	B.Sc. Engg. (Mech.), M.A. (Pub. Admn.), MIE (12 years)	08.06.81	33	Executive Engr., Western Coalfields Ltd., Nagpur.
Madan Lal, Manager	49,236	On deputation from UPSEB	B.E. (Elect.) (15 years)	06.09.77	39	Sr. Asstt. Engineer, UPSEB
Madan, R.K. Sr. Manager	67,522	Regular	B.Sc. Engg. (Elect.) (21 years)	12.12.79	43	Chief Engineer, M/s R.S. Steel Works, Bareilly
Mahajan, B.R. Asstt. Manager	56,132	Regular	B.A. (16 years)	11.07.78	50	Section Officer AG's Office, Jaipur
Mahajan, R.K. Dy. Manager	39,396	Regular	Dip. in Civil Engg. (24 years)	22.09.79	53	S.D.O., B.S.L. Project.
Mal, R.D. Admn. Officer	37,298	Regular	Matric (37 years)	25.02.77	56	Tech. Asstt. M/O Railways.
Malhotra, B.L. Dy. Manager	48,246	Regular	Dip. in Civil Engg. (35 years)	14.09.79	56	S.D.O., BSL Project, Sundar Nagar
Malhotra, G.G. Manager	52,901	Regular	B.A., LL.B., Dip. in Admn. Law (21 years)	15.05.78	41	Asstt. Legal Adviser, O.N.G.C.
Malhotra, S.P. Dy. Manager	53,075	Regular	B.A. Hons. (29 years)	30.04.77	49	P.S., Ministry of Energy
Manchanda, P.C. Dy. Manager	39,670	Regular	Dip. in Engg. (Elect.), AMIE (20 years)	02.04.79	41	Asstt. Director, Central Board of Irrigation & Power
Mandal, R.P. Sr. Manager	51,667	Regular	B.Sc. Engg. (Civil) (23 years)	16.11.79	45	Exe. Engr., Border Roads Organisation.
Mandappa, B.M. Chief Engineer	78,488	Regular	B.E. (Civil Engg.), M.I. Struct. E (London), F.I.E. (28 years)	01.10.81	52	Superintendent (Designs) SAIL (Bokaro Steel Plant)
Maniappan, T.P. Deputy Manager	46,410	Regular	B.Sc. Engg. (Civil) (17 years)	22.10.81	41	Asstt. Engr. Govt. of Daman, Diu.
Marwah, A.P. Asstt. Manager	39,273	On deputation from Haryana Irrigation Department.	Dip. in Civil Engg. (32 years)	05.09.79	53	S.D.O. Haryana Irrigation Deptt.
Mata, I.S. Prob. Executive	39,427	Regular	B.A. SAS, P.G. Dip. in IR&PM (29 years)	17.03.79	53	Selection Grade Asstt. AGCR, New Delhi.
Mathur, G.N. Manager	46,513	Regular	A.M.I.E. (Elect.) (18 years)	07.04.78	42	Asstt. Engineer, R.S.E.B.
Mazumdar, A. Dy. Manager	36,793	Regular	B.Sc., SRAS (20 years)	31.08.81	47	Section Officer, Office of Director of Audit, Railways
Mehendiratta, P.R. Asstt. Manager	41,475	On deputation from C.G. of Civil Accounts.	M.A., SAS (30 years)	31.03.84	55	Accounts Officer, M/o Energy, Deptt. of Power.
Mehta, O.P. General Manager	85,421	Regular	B.Sc. Engg. (Civil) (35 years)	01.01.80	56	Chief Engineer, Chukha Project Authority, Bhutan
Mishra, A.K. Asstt. Manager	37,814	Regular	B.E. (Civil) (6 years)	20.02.79	29	—
Mishra, H.S. Manager	43,546	Regular	A.I.C.W.A., S.A.S. (27 years)	21.12.79	56	R.A.O., Office of AG, Haryana
Misra, R.N. Asstt. Manager	39,190	Regular	B.E. (Hons.) (Civil) (5 years)	21.06.79	27	—
Misra, S.B.C. Manager	53,306	Regular	B.E. (Elect.) (12 years)	04.05.77	38	Asstt. Engineer, U.P.S.E.B.
Mittal, A.K. Asstt. Manager	40,611	Regular	B.E. (Hons.) Elect. (9 years)	16.05.77	32	Supervisor, Baira Siul Project, Govt. of India
Mittal, Dr. K.K. Sr. Medical Officer	41,229	Regular	M.B.B.S. (15 years)	17.02.78	40	—
Mittal, S.K. Chief Engineer	51,491	Regular	B.E. (Elect.) (25 years)	20.05.78	49	Executive Engineer, UPSEB

1	2	3	4	5	6	7
Mohd. Atta Manager	52,786	On deputation from PWD, J&K	B.E. (Civil) (25 years)	04.01.84	50	Executive Engr., PWD, J&K.
Mukherjee, K. Sr. Manager	60,137	Regular	FICWA (28 years)	25.01.79	49	Asstt. Finance Manager, FCI (P&D Division), Sindri.
Mukherjee, S.K. Dy. Manager	58,366	Regular	B.A., SAS (22 years)	20.04.81	54	Accounts Officer, A.G., UP, Allahabad.
Mukherjee, S.P. O.S.	40,176	Regular	B.A. (24 years)	01.06.79	41	Steno, Deptt. of Power, Govt. of India.
Murari Lal Sr. Manager	52,170	Regular	B.E. (Civil) (22 years)	22.10.81	44	Executive Engineer, I.D.P.L.
Murthy, C.L.N. Accounts Officer	38,557	Regular	S.A.S. (27 years)	01.06.79	50	Section Officer, Southern Rly.
Nagaraj, H.R. Chief Engineer	71,011	Regular	A.M.I.E. (Civil) (28 years)	19.09.83	52	Zonal Manager, NPCC
Nagaraja, K.S. Dy. Manager	43,717	Regular	B.E. (Civil), M. Tech. (Water Resources Engg.) (7 years)	16.05.77	30	—
Nagpal, S.K. Asstt. Manager	44,422	Regular	B.E. (Elect.) (11 years)	25.05.84	34	A.E., R.S.E.B.
Nambiar, N.P.K. Chief Engineer	48,879	Regular	B.E. (Civil), MIE (15 years)	21.07.80	54	Lt. Col. in Army
Nand Gopal Sr. Manager	66,548	Regular	B.E. (Civil), M.E. (Structures) (18 years)	03.04.80	43	Deputy Manager, TSP Ltd. Tungabhadra Dam
Narang, D.R. Accounts Officer	37,739	Regular	M.A., SAS (28 years)	11.02.77	48	Accountant, M/O Railways.
Narang, S.M. Dy. Manager	49,232	Regular	B.Sc. Engg. (Civil) (18 years)	14.02.79	41	Asstt. Director, CWC
Narayanan, Brig. P.N.S. General Manager	79,609	Regular	Degree in Engg. (Civil), MIE (32 years)	30.03.81	53	Chief Engineer, Army Headquarters, New Delhi
Neema, S.K. Dy. Manager	45,305	Regular	B.E. (Elect.), Dip. in Business Mngt. (13 years)	16.07.84	40	Asstt. Manager, Food Corpn. of India.
Ohri, R.K. P.S.	36,853	Regular	B.A. (28 years)	28.05.77	46	Steno, Deptt. of Power, Ministry of Energy.
Ojha, R.N. Dy. Manager	43,714	Regular	B.A. (18 years)	13.07.78	41	Welfare Officer, Britania Engg. Works, Patna
Pandey, U.D. Asstt. Manager	42,477	Regular	B.A., Dip. in labour laws, lab. welf. & Pers. Mgt. (26 years)	06.05.81	45	Office Supdt., BALCO.
Pardasani, N.H. Manager	54,899	Regular	B.Com. (Hons.), AICWA (28 years)	06.09.78	55	Sr. Accounts Officer, NPCC Ltd.
Paras, B.S. Probationary Executive	36,157	Regular	B.A., LL.B., DPM (20 years)	24.12.76	44	Stenographer, Ministry of Railways.
Popli, N.K. Asstt. Manager	42,336	Regular	B.Com. (Hons.), C.A. (14 years)	14.09.78	34	Popli & Associates.
Prabhakar, R.D. Dy. Manager	50,518	Regular	M.Sc. Engg. (Elec.) (14 years)	31.03.79	37	Assistant Executive Engineer, PSEB.
Prahlad, C.D. Engineer	37,997	Regular	B.E. (Elect.) (8 years)	Jan. 1977	35	Supervisor, C.E.A.
Prasad, G.M. Asstt. Manager	41,228	On deputation from BSEB	B.Sc. Engg. (Civil) (11 years)	07.09.79	33	Asstt. Engr., BSEB.
Prasada Rao, P.D. Sr. Manager	40,059	Regular	B.E. (Civil) (21 years)	23.06.80	45	Dy. Director, CWC
Prashar, P.D. Office Superintendent	38,664	Regular	B.A. (29 years)	12.07.79	52	Selection Grade Auditor, Directorate of Audit.
Pritpal Singh, Kr. Chief Engineer	61,897	Regular	B.E. (Civil), AMIE (29 years)	01.12.77	51	Superintending Engineer PWD, J&K.

1	2	3	4	5	6	7
Purohit, D.C. Manager	47,660	Regular	M.E. (Elect.) (15 years)	18.02.83	36	Project Engineer, Engg. Projects (India) Ltd.
Qureshi, N.A. Asstt. Manager	46,273	On deputation from Govt. of J&K.	B.E. (Mech.) (15 years)	14.01.83	40	Exe. Engr., PDD Deptt., J&K.
Raina, A.H. General Manager	78,312	Regular	B.E. (Elect.) (24 years)	15.05.78	54	Supdtg. Engr., Salal H.E. Project, Govt. of India.
Raina, K.B. Dy. Manager	41,230	Regular	M.S.W. (18 years)	15.05.78	44	Labour Officer, Salal H.E. Project Govt. of India.
Raina, M.L. Asstt. Manager	42,927	Regular	B.E. (Elect.) (9 years)	20.08.79	32	Asstt. Engineer, Bairasiul Project.
Raina, Y.K. Manager	39,241	Regular	B.E. (Civil) (23 years)	01.01.82	46	Executive Engineer, PWD, J&K.
Rajagopalan, R. Director (Finance)	89,982	Regular (Govt. Appointment)	B.Sc., B.L. (29 years)	19.11.78	56	Accountant-General, J&K
Rajpal, P.R. Engineer	48,467	Regular	B.E. (Civil) (11 years)	01.01.77	35	Asstt. Engineer, Ministry of Energy.
Ramam, T.V. Deputy Manager	40,450	Regular	B.E. (Civil) (13 years)	26.03.80	36	Extra Asstt. Director, CWC.
Ramamurthi, A.R. Sr. Manager	54,597	Regular	AICWA, A.C.S. (31 years)	11.08.78	48	Senior Asstt. Manager, F.C.I.
Raman, N.V. Co. Secy. & Chief (Law)	58,866	Regular	B.A., LL.B., GDSCS, ACS, ICWA (Inter), Dip. in Labour Laws (28 years)	15.12.78	48	Dy. Company Secretary, Engineers India Ltd.
Ramani, V. Dy. Manager	49,078	Regular	B.Sc., SAS, ICWA (24 years)	29.12.81	56	Accounts Officer, BALCO, Korba.
Ramarao, K. Dy. Manager	42,768	Regular	B.E. Civil (13 years)	13.03.80	39	Extra Asstt. Director, CWC.
Ramtani, I.L. Sr. Manager	53,375	Regular	B.A., LL.B., P.G. Dip. in Labour Laws, Lab. Welf. & Pers. Mgt. (25 years)	02.11.81	43	Sr. Adm. Officer (Pers.), Hindustan Zinc Ltd.
Rao, G.L.N. Asstt. Manager	39,441	Regular	S.A.S. (30 years)	26.05.80	48	Section Officer, C.A.G. of India.
Rao, P.L. Manager	51,204	Regular	AMIE (25 years)	12.03.81	46	Divisional Engineer, Rehabilitation Reclamation Organisation, Deptt. of Rehabilitation, Govt. of India.
Rastogi, V.P. Sr. Manager	54,738	Regular	AMIE, Dip. in Ind. Admn. (27 years)	09.06.81	45	Dy. Sales Manager, Triveni Structurals Ltd.
Ravinder Kumar, Engineer	38,941	Regular	B.Sc. Engg. (Civil) (8 years)	30.12.81	29	Asst. Dir., Indian Standards Institution.
Rawat, G.S. Asstt. Manager	44,987	Regular	B.Sc. Engg. (Civil) (8 years)	19.03.79	30	Engr., M/s Mohinder Singh & Sons.
Robertson, J.H. Manager	54,064	Regular	B.E. Mech. (15 years)	11.10.78	39	A.E.E., Tamil Nadu Electricity Board.
Roy Choudhury, S.N. Asstt. Manager	36,001	Regular	B.E. (Mech.) (12 years)	01.01.77	39	Supervisor, Loktak Project, Govt. of India.
Roy, Subhash Asstt. Manager	36,986	Regular	B.E. (Civil) (12 years)	27.09.82	34	A.E., Irrigation Deptt., Tripura.
Sachdeva, A.K. Manager	45,453	Regular	B.E. (Mech.) (15 years)	21.12.78	37	A.E., National Fertilisers Ltd., Bhatinda.
Sachdeva, H.S. Dy. Manager	46,687	Regular	B.A. (34 years)	19.09.79	53	P.S. to Minister of State for Energy
Sahoo, Dr. S. Sr. Medical Officer	44,636	Regular	M.B.B.S. (10 years)	06.02.78	38	Asstt. Surgeon Gr. I, Health Service, Govt. of Manipur.
Salhotra, N.P. Asstt. Manager	39,114	Regular	B.E. (Mech.) (9 years)	20.01.78	35	A.E., Baira Siul Project, Govt. of India

1	2	3	4	5	6	7
Sapra, I.J.L. Proc. Officer	39,935	Regular	B.A. (26 years)	23.05.79	50	Superintendent, Beas Construction Board.
Saraf, B.K. Chief Engineer	43,722	Regular	B.E. (Elect.) (28 years)	29.12.83	56	Jt. Commissioner, PDD (J&K)
Saraf, B.R. Asstt. Manager	39,939	Regular	B.E. (Civil) (5 years)	10.09.79	27	—
Satya Prakash Engineer	40,929	Regular	B.E. (Civil) (10 years)	09.07.81	33	Asstt. Manager, FCI
Saxena, J.C. Law Officer	39,334	Regular	M.A., LL.M. (29 years)	07.12.78	50	Selection Grade Auditor, Directorate of Audit
Saxena, R. Asstt. Manager	41,089	Regular	B.Sc. Engg. (Civil) (11 years)	23.11.82	33	Engr. (Civil), EC Ltd., Burdwan (W.B.)
Seetharaman, N. Dy. Co. Secy.	47,224	Regular	B.A., LL.B., A.C.S. (26 years)	26.11.79	46	SPA, Planning Commission
Sehgal, R.P. Dy. Manager	43,920	Regular	B.Sc. Engg. (Elect.) (13 years)	25.11.81	43	Shift Engineer, Beas Project, Talwara
Sehgal, S.C. Dy. Manager	42,432	Regular	B.Sc. (Civil Engg.) (14 years)	07.11.80	37	Asstt. Engineer, Chukha Hydel Project.
Sehgal, V.P. Dy. Manager	36,920	Regular	B.E. (Elect.) (16 years)	12.01.78	38	Shift Engineer, BSL Project.
Sen, S.P. Manager	51,918	Regular	M.E. (Civil) (12 years)	11.08.80	36	Asstt. Engineer, I&W Department, West Bengal.
Sharma, B.K. Sr. Manager	46,834	Regular	B.Tech (Civil), M.Tech. (Soil Mechanics and Foundation Engg.) (21 years)	18.07.81	44	Research Engg. Institute of Rock Mechanics, Univ. of Karlsruhe, (W. Germany).
Sharma, B.R. Architect	42,950	On deputation from J&K Govt.	G.D. (Arch.), MICA (14 years)	05.12.83	37	Asstt. Town Planner, Jammu Development Authority
Sharma, G.S. Asstt. Manager	38,216	Regular	B.Tech. (Civil) (5 years)	01.02.80	28	—
Sharma, K.N. Dy. Manager	42,719	Regular	B.E. (Civil), M.E. (Hyd. structures) (15 years)	14.04.81	39	Lecturer in Civil Engg., M.R. Engg. College, Jaipur.
Sharma, K.S. Manager	48,833	On deputation from Punjab, PWD (IB)	B.Sc. Engg. Hons. (Civil) (18 years)	23.05.77	36	S.D.O., P.W.D. Punjab (I.B.)
Sharma, M.D. Asstt. Manager	36,769	Regular	B.E. (Civil) Dip. in Business Management (10 years)	20.10.82	35	AD (Extra), CWC
Sharma, M.T. Asstt. Manager	37,243	Regular	B.Sc. Engg. (Civil) (5 years)	14.04.80	29	Jr. Site Engineer, M/s Gammons India Ltd.
Sharma, O.P. Sr. Manager	56,996	Regular	B.Sc. (Engg.) (Civil) (23 years)	15.05.78	47	Executive Engineer, Salal H.E. Project, Govt. of India
Sharma, P.D. Manager	50,702	Regular	AMIE, Dip. in Elect. Engg. (21 years)	29.8.77	41	A.E., U.P.S.E.B.
Sharma, R.K. Manager	48,381	Regular	B.E. (Elect.), PG Dip. in Elect. Engg., Dip. in Marketing Management. (16 years)	31.08.78	38	A.E., Beas Project, Chandigarh.
Sharma, R.L. Asstt. Manager	39,982	Regular	B.E. (Civil) (5 years)	22.05.79	29	—
Sharma, S.G. Asstt. Manager	37,210	Regular	B.Sc. Engg. (Elect) (9 years)	13.09.78	30	J.E., Office of CE (OP.) Shimla

1	2	3	4	5	6	7
Sharma, V.B. Asstt. Manager	43,441	Regular	B.Sc. Engg. (Civil) (15 years)	23.09.81	41	Service Engineer, HCC Ltd.
Sharma, V.K. Manager	49,733	On deputation from H.P.S.E.B.	B.E. (Mech.) (17 years)	02.04.84	40	Executive Engr., HPSEB
Sharma, V.K. Asstt. Manager	41,567	On deputation from HPSEB	B.Sc. Engg. (Civil) (11 years)	27.04.81	36	Asstt. Executive Engr. HPSEB.
Sharma, V.K. Asstt. Manager	52,832	Regular	B.Sc. Engg. (Civil) (6 years)	23.05.79	32	—
Sharma, Y.K. Deputy Manager	38,253	Regular	B. Tech. (Mech. Engg.) (13 years)	08.12.80	35	Asstt. Engineer, UP State Agro. Ind. Corpn. Limited
Shenvi, N.R. Manager	51,066	Regular	B.E. (Civil) (14 years)	09.10.78	38	Engineer, Mysore Power Corporation Ltd., Bangalore
Singh Baldev, Dy. Manager	39,570	On deputation from PWD, J&K	B.E. (Mech.) (18 years)	27.12.77	42	Executive Engineer, Lower Jhelum Project, J&K.
Singh, B.R. Asstt. Manager	40,066	Regular	B.Sc. Engg. (Elect.) (14 years)	02.08.77	40	Sectional Officer, Beas Construction Board, BSL Project.
Singh, Harbans Dy. Manager	47,630	Regular	B.Sc. Engg. (Civil), MISc, MIGS (18 years)	20.01.79	41	Asstt. Engineer, Chukha H.E. Project, Bhutan.
Singh, Joginder Manager	50,618	Regular	M.S.W., LL.B. (14 years)	10.05.78	39	Personnel-cum-Labour Welfare Officer, Punjab Scooters Ltd.
Singh, J. Dy. Manager	41,946	Regular	B.E. (Elect.) (13 years)	29.10.81	40	Asstt. Director, C.E.A.
Singh, K.P. Dy. Manager	40,372	Regular	B.E. (Elect.) (13 years)	11.03.80	37	Asstt. Director, CEA
Singh, N. Asstt. Manager	44,929	Regular	B.E. (Elect.) (4 years)	02.05.80	30	—
Singh, Perminder, Manager	41,783	On deputation from Irrigation Deptt. J&K	B.E. (Civil) (16 years)	15.05.78	39	Assistant Engineer, Salal H.E. Project
Singh, Maj. R.D.P. Manager	51,474	Regular	B.Sc. Engg. (Civil) (18 years)	21.03.79	41	Major in Indian Army.
Singh R.K. Asstt. Manager	41,184	Regular	B. Tech. (Civil), (5 years)	24.08.82	30	Engr., HCC Ltd.
Singh, S. Engineer	37,117	Regular	B.E. (Elect.) (2 years)	14.10.82	24	—
Sinha, A. Engineer	36,480	Regular	B.Tech. (Mech.) (9 years)	10.07.81	30	Project Engineer, Kinetics Technology, New Delhi.
Sinha, A.S.C. Sr. Manager	50,794	Regular	B.Sc. (Prodn. Engg.) M.S. (Mech. Engg.) MBA (16 years)	30.06.81	37	Sr. Planning Engineer, B.H.E.L.
Sinha, B.S.P. Sr. Manager	57,214	Regular	B.A.L.L.B. (22 years)	03.06.81	45	Manager, B.H.E.L.
Subramani, C.G. Senior Manager	76,918	Regular	B.E. (Civil) M.I.E. (24 years)	03.10.79	47	Executive Engineer, Border Roads Deptt.
Suri, B.L. Senior Manager	41,699	On deputation from PDD, J&K	B.Sc. Engg. (Elect.) P.G. Dip. in Business Management. (25 years)	11.07.82	49	S.E. (Electrical) PDD, J&K
Tahilyani, T.C.A. Manager	56,113	Regular	M.Sc. Engg. (Elect.) (13 years)	04.05.78	37	Asstt. Engineer, UPSEB

1	2	3	4	5	6	7
Tandon, R.K. Dy. Manager	39,500	Regular	B.Sc. Engg. (Elect.) (13 years)	06.08.77	39	Supervisor, CEA
Taneja, S.K. Manager	40,822	On deputation from PWD Punjab.	B.E. (Civil) (23 years)	13.08.82	48	S.D.E., Irrigation & Power Deptt., Govt. of Punjab.
Thakkar, P.J., Engineer.	50,713	Regular	B.E. (Elect.) (5 years)	13.02.80	29	Junior Engineer, Gujrat Electricity Board.
Thakur, Prem Singh Security Officer	41,097	On deputation from H.P. Police Service.	F.A. (35 years)	01.06.80	56	Dy. S.P., HP Police Service
Thapar, V. Dy. Manager	43,298	Regular	M.A. (18 years)	03.10.79	57	Asstt. Director (A.R.) Delhi Administration.
Trehan, P.S. Dy. Manager	43,201	On deputation from Punjab Irrigation Deptt.	AMIE (Mech.) (17 years)	06.10.80	40	S.D.O., Punjab Irrigation
Tripathi, S.D. Dy. Manager	38,233	Regular	AMIE (Elect.) (19 years)	22.10.81	37	AE, RSEB
Tyagi, G.D. Chief Engineer	67,022	On deputation from UP Irrigation Department	B.E. (Civil) (29 years)	10.02.78	52	Executive Engineer, Irrigation Department, UP.
Ulaganathan, D. Dy. Manager	44,790	Regular	B.E. (Elect.) (12 years)	16.06.77	35	A.E., Tamil Nadu Elec. Board.
Varatharajan, R. Sr. Manager	53,778	Regular	M.A. (English) M.A. (Economics) SAS, (30 years)	13.11.78	55	Revenue Audit Officer, A.G.C.R.
Vasudevan, K. Principal	43,020	Regular	B.A., B.ED. (18 years)	29.03.78	39	Principal, Directorate of Education., Bhutan
Veerabhadraiah, S. Asstt. Manager	38,130	Regular	M.A. (Pub. Admn. with Lab. Welf.) M.A. (Eco., Stat.) (28 years)	18.06.80	48	Superintendent, NSSO, Deptt. of Statistics, Govt. of India.
Venkatachalam, K.R. SPS	40,372	Regular	SSLC (28 years)	01.08.78	51	SPA to Secretary (Power), Ministry of Energy
Venkatesh, C.R. Sr. Manager	52,129	Regular	B.E.(Civil) M.E. Structures (17 years)	29.07.81	40	Scientist, Cement Research Institute of India
Verma, D. Paul Sr. Manager	45,232	Regular	B.Sc. Engg. (Civil) (19 years)	09.08.76	43	SDO, Punjab PWD (Irrigation)
Verma, R.C. Manager	41,943	On deputation from PWD, J&K	B.Sc. Engg. (Mech.) (20 years)	15.02.84	45	Exe. Engr., PWD, J&K
Verma, S. Manager	55,778	Regular	B.E. (Civil) (21 years)	06.03.79	42	Major in Indian Army
Verma, V.K. Engineer	36,843	Regular	B.E. (Civil) (4 years)	01.02.80	29	—
Vishwanath, T.A.B. Dy. Manager	42,436	Regular	B.E. (Civil) P.G. Dip. in Project Management. (17 years)	01.12.80	38	Asstt. Executive Engr., Border Roads Orgn.
Viswanathan, N. Sr. Manager	62,750	Regular	M.E. (Civil) (21 years)	17.09.79	45	Assistant Chief Engineer, Triveni Structural Ltd.
Wadhwa, I.D. Office Suptd.	36,119	Regular	Matric (33 years)	07.07.79	50	Selection Grade Auditor, Department of Audit, CW&M
Yaduvendra, R.K. Sr. Manager	46,869	Regular	M.Sc. (Mech. Engg.), MBA. (19 years)	01.01.82	43	Dy. Dir., Office of Dev. Commr. (SSI) M/O Industry, Govt. of India.



1	2	3	4	5	6	7
Zutshi, K.L. Chief Engineer	75,575	Regular	B.E. (Civil) M.Tech. (23 years)	15.05.78	47	Executive Engineer, Salal Hydroelectric Project, Govt. of India
<b>(B) Particulars of employees employed for part of the financial year who were in receipt of remuneration not less than Rs. 3,000/- p.m.</b>						
Batish, O.P. Manager	40,678	Regular	B.A. (Hons.) SAS (34 years)	20.06.78	58	Finance Officer & IAO, H.P. University, Simla.
Bedi, S.S. Asstt. Manager	26,035	On deputation from NPCC	B.Sc. Engg. (Mech.) (9 years)	27.7.84	30	A.E.E., NPCC
Bhambhani, P. Asstt. Manager	37,742	Regular	B.Tech. (E) (11 years)	30.12.81	33	Asstt. Director, CEA
Chauhan, I.C. L.A. Officer	40,971	On deputation from H.P. Govt.	B.A. (27 years)	23.04.84	51	SDM, H.P. Govt.
Dwivedi, M.G. Manager	51,521	Regular	M.E. (Elect.) (14 years)	13.3.78	39	A.E., U.P.S.E.B.
Gandotra, V.K. Asstt. Manager	19,650	On deputation from J&K, PWD	B.E. (Mech.) (17 years)	20.02.84	41	AE, Mech. Irrigation Div. PWD, J&K.
Ghayasi, M.R. Asstt. Manager	6,215	Regular	MBA, LL.B. DLL (16 years)	02.02.85	39	Pers. Officer Modi Rubber Ltd.
Gupta, K.C. Manager	38,164	On deputation from J&K Govt.	B.E. (Mech.) (20 years)	04.06.84	40	Executive Engr., Mech. Engg. Deptt. J&K Govt.
Gupta, R.K. Asstt. Manager	21,188	Regular	B.E. (Civil) (5 years)	22.05.79	28	—
Habbu, P. Asstt. Manager	29,797	Regular	B.E. (Civil) (8 years)	16.06.84	29	Engineer, Karnataka Power Corpn. Ltd.
Hemalatha, (Mrs.) A. Asstt. Manager	32,449	Regular	B.Tech. (Civil) (8 years)	19.05.84	31	Asstt. Exe. Engr., A.P. Irrigation Deptt.
Juneja, R.K. Asstt. Manager	37,813	On deputation from H.P.S.E.B.	B.E. (Civil) (13 years)	01.05.84	35	Executive Engineer, H.P.S.E.B.
Kashyap, K.K. Director (Technical)	43,703	Govt. Appointment	B.E. (Mech.) B.E. (Elect.) (27 years)	30.08.84	51	Dy. General Manager, BHEL.
Kaskun, D. Asstt. Manager	28,034	Regular	B.E. (Civil) (13 years)	25.07.84	35	Executive Engr., NPCC
Keshori, B. Asstt. Manager	30,006	Regular	B.E. (Civil) M.Tech. (19 years)	30.06.84	42	Asstt. Professor of Civil Engg., Bihar Public Service Commission.
Khosla, K.D. Manager	37,933	On deputation from H.P.S.E.B.	B.E. (Elect.) (20 years)	05.07.84	45	SE, H.P.S.E.B.
Kohli, N.K. Asstt. Manager	28,089	On deputation from PWD, J&K	B.E. (Civil) (18 years)	21.06.84	42	A.E., PWD, J&K
Kumnar, Arun Asstt. Manager	35,078	On deputation from H.P.S.E.B.	B.Sc. Engg. (Civil) (12 years)	21.05.84	34	A.E.E., H.P.S.E.B.
Kumar, B. Sr. Manager	44,523	Regular	M.A. (Pol. Sc.) M.A. (L.S.W.), B.L. (19 years)	12.07.78	46	Pers. Officer, Bokaro Steel Ltd.
Mahajan, S.C. Manager	38,523	On deputation from PSEB	B.E. (Elect.) (17 years)	30.07.84	38	Executive Engineer, PSEB

1	2	3	4	5	6	7
Maini, S.S. Manager	31,094	On deputation from Punjab Irrigation Deptt.	A.M.I.E., Dip. in Civil Engg. (28 years)	04.02.80	57	Sr. Design Engineer Punjab Irrigation Deptt.
Mishra, M.D. Manager	42,384	Regular	B.A., SAS (28 years)	30.4.84	48	Senior Accounts Officer Triveni Structurals Ltd.
Nagpal, A.K. Chief Engineer	32,760	On deputation from PDD, J&K	B.E. (Elect.) (29 years)	07.08.84	44	S.E., PDD, J&K
Oberoi, B.R. Chairman & Managing Director	6,784	Govt. appointment	MIE (India), Post Graduate (Elect. Engg.) Dip. in Business Management (31 years)	28.02.85	53	CMD, NPCC Ltd.
Parihar, J.S. Asstt. Manager	41,283	On deputation from HPSEB	B.Sc. Engg. (Civil) (12 years)	18.04.84	35	A.E., HPSEB
Parsad, A.H. Asstt. Manager	35,613	On deputation from HPSEB	B.Sc. Engg. (Civil) (12 years)	21.05.84	39	AEE, HPSEB
Pirzada Ghulam Nabi, Chairman & Managing Director	73,234	Govt. Appointment	M.Sc. in Civil Engg. Columbia University (USA) (35 years)	07.07.82	58	Officer on special duty. PWD, J&K.
Ramanan, S. Asstt. Manager	30,471	Regular	B.E. (Civil) (10 years)	27.06.84	35	Engineer, M/s KPC Ltd.
Ray, A.K. Asstt. Manager	30,471	On deputation from PWD, Tripura	B.Sc. Engg. (Elect.) (14 years)	15.05.78	37	A.E., Salal HE Project, Govt. of India.
Sen, S.C. General Manager	35,110	On deputation from ASEB.	B.E. (Civil) F.I.E. (28 years)	31.08.84	50	Chief Engineer, ASEB.
Shitley, S.S. Office Supdt.	6,034	Regular	M.Com (30 years)	15.07.78	58	Supdt. Gr. II, Central Board of Irrigation & Power
Subramanian, V. Director (Finance)	25,788	Govt. appointment	B.Sc. (Hons.) LL.B. (32 years)	27.01.78	56	Accounts Member, Kerala State Elect. Board.
Tather, G.C. Asstt. Manager	30,554	Regular	B.E. (Elect.) (12 years)	29.06.84	33	A.E., R.S.E.B.
Ulfat, S.P. Admn. Officer	38,751	Regular	B.A. (32 years)	19.02.77	57	Asstt., Ministry of Railways.
Venkataramaiah, P. Sr. Manager	53,840	Regular	B.E. (Civil) (28 years)	25.01.80	53	Superintending Engineer, Chukha Project Authority, Bhutan.

- Notes: (1) None of the above employees is related to any of the Directors of the Corporation within the meaning of Section 6 of the Companies Act, 1956.
- (2) The terms and conditions of appointment are as determined by Government/Rules and Regulations of the Corporation in force from time to time, as the case may be.
- (3) Designations indicated in the list denote the nature of duties performed by employees.
- (4) (a) The 'Remuneration' includes cost of hiring corporation-leased accommodation, wherever applicable, employer's contribution to PF etc.  
(b) The Gratuity amount has not been taken into account as the same has been provided on the basis of Gratuity-cum-LIC Policy taken with Life Insurance Corporation of India.  
(c) In the case of employees posted abroad, the remuneration includes Foreign Allowance also.

## BALANCE SHEET AS AT 31ST MARCH, 1985

(Rs. in thousands)

Particulars	Schedule	31.3.1985	31.3.1984
<b>SOURCES OF FUNDS</b>			
1. Shareholders' Funds			
(a) Capital	'I'	2,22,31,01	1,65,60,63
(b) Share Money Deposit		90,56,65	54,83,40
(c) Reserves and Surplus	'II'	23,44,74	23,44,74
		<u>3,36,32,40</u>	<u>2,43,88,77</u>
2. Grants-in-aid	'III'	98,94	43,71
3. Loan Funds			
Unsecured loans	'IV'	1,74,87,95	1,37,14,64
<b>TOTAL</b>		<u>5,12,19,29</u>	<u>3,81,47,12</u>
<b>APPLICATION OF FUNDS</b>			
1. Fixed Assets			
Gross Block	'V'	2,96,39,06	2,65,52,00
Less Depreciation		23,79,44	30,88,54
Net Block		<u>2,72,59,62</u>	<u>2,34,63,46</u>
2. Capital Work-in-progress	'VI'	1,16,53,74	33,21,02
3. Current Assets, Loans & Advances.	'VII'		
(a) Inventories		15,68,96	23,66,49
(b) Cash & Bank Balances		30,49,05	48,89,17
(c) Sundry debtors		35,21,97	25,36,37
(d) Other Current Assets		61,36	96,07
(e) Loans and Advances		95,80,27	35,32,05
		<u>1,77,81,61</u>	<u>1,34,20,15</u>
Less: Current Liabilities and Provisions Liabilities	'VIII'	55,85,49	43,16,86
		<u>55,85,49</u>	<u>43,16,86</u>
<b>NET CURRENT ASSETS</b>			91,03,29
4. Miscellaneous Expenditure to the extent not written off or adjusted		1,21,96,12	
5. Profit & Loss Account (Loss)	'IX'	28,05	32,01
		81,76	22,27,34
		<u>5,12,19,29</u>	<u>3,81,47,12</u>
Notes to the Accounts & Contingent Liabilities	'XIII'		
Additional Information under Part II of Schedule VI	'XIV'		
Schedule I to XIV and Accounting Policies form an integral Part of the Accounts.			

**N.V. RAMAN**  
Secretary

**R. RAJAGOPALAN**  
Director (Finance)

**B.R. OBEROI**  
Chairman and Managing Director

As per our separate report attached  
For. S.L. Khindaria & Co.  
Chartered Accountants

New Delhi  
17th September, 1985

**S.L. KHINDARIA**  
Partner

## PROFIT AND LOSS ACCOUNT FOR THE YEAR ENDED 31.3.1985

(Rs. in thousands)

Particulars	Schedule	31.3.1985	31.3.1984
<b>INCOME</b>			
1. Revenue from the sale of Electric Power		36,45,26	25,20,68
2. Fee for Construction Management		62,60	1,41,27
3. Miscellaneous Income	'X'	10,06	5,74
<b>TOTAL INCOME</b>		37,17,92	26,67,69
<b>EXPENDITURE</b>			
4. Employees' Remuneration and benefits	'XI'	2,95,46	2,18,42
5. Generation, Transmission & Administration Expenses	'XII'	4,15,67	3,21,87
6. Excise duty on generation		95,57	1,58,95
7. Royalty charges		1,33,34	1,31,05
8. Depreciation		3,86,73	11,91,07
9. Interest on Government loans		15,30,81	12,75,06
10. Preliminary expenses written off		4,00	4,00
<b>TOTAL EXPENDITURE</b>		28,61,58	33,00,42
11. Profit/(Loss) for the year		8,56,34	(6,32,73)
12. (a) Add/(Less) prior period adjustments of excess depreciation written back		12,90,36	(-)
(b) Other expenses (Net)		(1,12)	(18,05)
13. Profit/(Loss) before Income-tax & Statutory Appropriations		21,45,58	(6,50,78)
14. Provision for Taxation		—	—
15. Profit/(Loss) after tax and Statutory Appropriations		21,45,58	(6,50,78)
16. Add/(Less) profit/(loss) brought forward from previous year		(22,27,34)	(15,76,56)
17. Loss due to unabsorbed Investment Allowance Reserve carried over to Balance Sheet		(81,76)	(22,27,34)

**N.V. RAMAN**  
Secretary

**R. RAJAGOPALAN**  
Director (Finance)

**B.R. OBEROI**  
Chairman and Managing Director

As per our separate report attached  
For S.L. Khindaria & Co.  
Chartered Accountants

New Delhi  
17th September, 1985

**S.L. KHINDARIA**  
Partner

## SCHEDULES

### SHARE CAPITAL

#### SCHEDULE-I (Rs. in thousands)

Particulars	31.3.1985	31.3.1984
<b>AUTHORISED CAPITAL</b>		
40,00,000 Equity Shares of Rs. 1,000/- each	4,00,00,00	4,00,00,00
<b>ISSUED, SUBSCRIBED AND PAID-UP CAPITAL</b>		
22,23,101 Equity Shares of Rs. 1,000/- each, fully paid (out of this 6,29,529 shares have been allotted for consideration other than cash and one Share has been allotted for part consideration other than cash).	2,22,31,01	1,65,60,63
	<u>2,22,31,01</u>	<u>1,65,60,63</u>

### RESERVES AND SURPLUS

#### SCHEDULE-II (Rs. in thousands)

Particulars	31.3.1985	31.3.1984
<b>CAPITAL RESERVES</b>		
1. Investment Allowance Reserve	23,44,74	23,44,74
	<u>23,44,74</u>	<u>23,44,74</u>

### GRANTS-IN-AID

#### SCHEDULE-III (Rs. in thousands)

Particulars	31.3.1985	31.3.1984
<b>GRANTS-IN-AID FOR INVESTIGATION OF HYDROELECTRIC PROJECTS</b>		
1. Koel Karo	5,00	5,00
2. Dulhasti	5,00	5,00
3. Chamera	3,36,00	3,36,00
4. Dhaleshwari	1,66,84	1,66,84
5. Dhauliganga	2,01,29	95,00
6. Tanakpur	37,16	37,16
	<u>7,51,29</u>	<u>6,45,00</u>
<b>LESS: EXPENDITURE</b>		
A. Chamera	2,55,32	2,99,59
B. Dhaleshwari	1,48,56	1,35,82
C. Dhauliganga	2,10,81	1,00,19
D. Tanakpur	37,66	65,69
	<u>6,52,35</u>	<u>6,01,29</u>
	<u>98,94</u>	<u>43,71</u>

**UNSECURED LOANS****SCHEDULE-IV**  
(Rs. in thousands)

Particulars	31.3.1985	31.3.1984
1. Loans from Government of India	1,60,83,16	1,37,14,64
2. From other sources	14,04,79	—
	<u>1,74,87,95</u>	<u>1,37,14,64</u>

**FIXED ASSETS****SCHEDULE-V**  
(Rs. in thousands)

Particulars	Gross Block as at 1.4.1984	Additions/ Adjustments	Deduc-tions/ Sales/ Transfers	Gross Block as at 31.3.85	Total depreciation as at 31.3.85	Net Block as at 31.3.85	Net Block 31.3.84
1	2	3	4	5	6	7	8
Land (Freehold)	2,39,27	23,98	—	2,63,25	—	2,63,25	2,39,27
Land (Leasehold)	4,86	38,46	—	43,32	1,33	41,99	4,37
Residential buildings	6,88,53	1,49,50	5,01	8,33,02	3,01,12	5,31,90	4,03,89
Non-residential buildings	16,44,33	2,14,51	1	18,58,83	2,32,94	16,25,89	14,62,97
Roads and Bridges	8,45,20	71,39	—	9,16,59	1,39,75	7,76,84	7,17,92
Plant & Machinery	52,03,50	8,57,90	1,46,03	59,15,37	11,44,17	47,71,20	39,58,38
Hydraulic works including Dams, Tunnels, Channels & Penstocks	1,65,64,21	13,97,57	—	1,79,61,78	2,55,98	1,77,05,80	1,55,69,48
Vehicles & other Transport	3,33,47	2,03,17	20,76	5,15,88	1,44,88	3,71,00	2,34,05
Office furniture & fixtures	78,24	44,44	2,06	1,20,62	14,38	1,06,24	69,23
Office equipment and other Appliances	60,00	28,87	1,95	86,92	16,35	70,57	48,67
Transmission Lines	7,45,64	1,65	—	7,47,29	68,38	6,78,91	6,44,93
Communication equipment	15,03	12	1	15,14	4,24	10,90	11,59
Misc. equipment	8,32	31,43	1,73	38,02	3,13	34,89	7,71
Other Assets	1,20,22	2,04,24	1,43	3,23,03	52,79	2,70,24	89,82
Assets in transit	1,18	—	1,18	—	—	—	1,18
	<u>2,65,52,00</u>	<u>32,67,23</u>	<u>1,80,17</u>	<u>2,96,39,06</u>	<u>23,79,44</u>	<u>2,72,59,62</u>	<u>2,34,63,46</u>
Previous year	1,59,05,95	1,08,82,12	2,36,07	2,65,52,00	30,88,54	2,34,63,46	

**CAPITAL WORK-IN-PROGRESS**

**SCHEDULE-VI**  
(Rs. in thousands)

Particulars	31.3.1985	31.3.1984
Survey, Investigation, Consultancy and other preliminary expenses	1,66,14	80,10
Building & Civil Engineering Works	5,74,65	4,10,80
Communications	8,39,79	3,43,69
Hydraulic works including Barrages, Dams, Tunnels, & Power Channels	2,32,18	6,18,43
Penstock	2,85,91	30,47
Plant & Machinery in Generating station	1,82	27,33
Electrical installations	29,14,52	65,45
Ancillary works	1,49,54	75,25
Trunk Transmission lines	29,51,23	4,05,35
Incidental expenditure during construction (as per statement attached)		
Balance brought forward from last year	12,64,15	43,13,62
Less: Prior period adjustments	—	10,80,93
	12,64,15	32,32,69
Add: Additions for the year	27,68,75	9,70,66
	40,32,90	42,03,35
Less: Capitalised during the year	4,94,94	29,39,20
	35,37,96	12,64,15
	1,16,53,74	33,21,02

**STATEMENT OF INCIDENTAL EXPENDITURE DURING CONSTRUCTION  
FOR THE YEAR ENDED 31.3.1985**

(Rs. in thousands)

Particulars	31.3.1985	31.3.1984
<b>1. EMPLOYEES' REMUNERATION AND BENEFITS</b>		
Salaries, wages, allowances & benefits	4,91,09	3,30,80
Expenses on surplus staff	1,51,34	-
Foreign service contribution	7,04	4,43
Contribution to Provident Fund	42,24	22,43
Contribution to Gratuity Fund	7,49	5,61
Staff welfare	43,30	31,30
	<u>7,42,50</u>	<u>3,94,57</u>
<b>2. REPAIRS &amp; MAINTENANCE</b>		
Buildings	29,72	21,31
Roads & Bridges	16,66	19,98
Machinery & construction equipment	81,09	58,73
Others	25,01	26,00
	<u>1,52,48</u>	<u>1,26,02</u>
3. Travelling and conveyance	75,10	58,51
4. Expenses on staff cars & inspection vehicles	80,53	45,52
5. Transport expenses	4,06	1,54
6. Rent	71,64	51,62
7. Rent for Residential accommodation	21,09	13,96
8. Rates and taxes	3,42	1,38
9. Insurance	55,72	37,30
10. Electricity charges	5,40	4,72
11. Water charges	33	28
12. Telephone, telex & postage	36,06	18,00
13. Advertisement & publicity	26,88	21,46
14. Design and consultation	1,14,06	15,49
15. Entertainment	1,43	1,12
16. Printing & stationery	33,22	15,52
17. Training	1,03	3,68
18. Payment to Auditors		
(a) Audit fee	68	53
(b) for taxation matters	35	6
(c) Audit expenses (prior period)	1,15	1,26
	<u>2,18</u>	
19. Interest on Government loans	95,41	-
20. Bank charges and interest	15	1,28
21. Transfer of Technology	11,33	15,97
22. Loss on materials/Assets written off	1,21	40
23. Foreign consultancy charges	13,33,19	2,24,97
24. Depreciation	2,26,33	2,13,74
25. Other expenses	68,95	36,32
	<u>31,63,70</u>	<u>13,05,22</u>



(Rs. in thousands)

Particulars	31.3.1985		31.3.1984
<b>LESS : RECEIPTS AND RECOVERIES</b>			
1. Sales of Scrap material	3,97		62
2. Electricity Charges	10		20
3. Cost of Tender forms	3,25		1,44
4. Hire charges of Plant & Machinery	24,05		3,99
5. Water charges	57		69
6. Rent	81		60
7. Interest:			
Term Deposits & Savings Bank	95,35		66,21
Loans and Advances	8,88		2,68
8. Miscellaneous Receipts & Recoveries	16,69		37,81
9. Profit on Sale of Assets	36		-
	<u>1,54,03</u>		<u>1,14,24</u>
Net Expenditure	30,09,67		11,90,98
<b>LESS:</b>			
1. Design charges allocated to Capital Work-in-progress	75,56	62,72	
2. I.E.D.C. allocated to Assets	-	18,19	
		<u>80,91</u>	
	<u>29,34,11</u>		<u>11,10,07</u>
Add/(Less) Prior Period Adjustments (Net)	(13)		(65)
	<u>29,33,98</u>		<u>11,09,42</u>

**NOTE:**

1. a) The above expenditure includes the following amounts paid to Directors:
  - i) Salaries and allowances 1,19,349 1,06,743
  - ii) Leave encashment 14,297 -
  - iii) Contribution to Provident Fund 11,595 9,267
  - iv) Rent for residential accommodation 34,833 25,617
  - v) Medical reimbursement 7,287 14,735
  - vi) Travelling expenses 1,77,049 2,22,857
  - vii) Leave Travel concession 1,202 7,792
- b) Whole-time Directors were also allowed the use of company's car for official journeys and for private journeys upto 500 kms. on payment of Rs. 150 p.m. in terms of Government Sanction. Perquisite value of staff car, if available for unrestricted use, would have worked out to Rs. 8,250/- during 1984-85 (previous year Rs. 9,400/-)
2. The above does not include Rs. 53.11 lakhs (previous year Rs. 24.73 lakhs) on account of shortages/losses of material, which are under investigation. Pending finalisation of the investigation, the amount has been shown under Capital work-in-progress and Current Assets.

## STATEMENT OF ALLOCATION OF INCIDENTAL EXPENDITURE DURING CONSTRUCTION

(Rs. in thousands)

Particulars	31.3.1985	31.3.1984
Net expenditure as per Statement of Incidental Expenditure during the year.	29,33,98	11,09,42
<b>ALLOCATION TO:</b>		
<b>A. Transmission Construction Units</b>		
(Deposit works)		
1. Gangtok, Melli, Kalimpong	2	63
2. Gangtok - Dikchu		
3. Leimatak - Jiribam	54	19
4. Ramnagar - Gandak	-	-
5. Singrauli - Kanpur	2	9
6. Neepco	8	6
	66	97
<b>B. Projects on agency basis</b>		
1. Salal Project	1,24,73	95,63
2. Devighat Project	1,90	12,24
3. R.E. Project	3	-
	1,26,66	1,07,87
<b>C. Investigation Projects</b>		
1. Chamera Project	-	76
2. Dhaleshwari Project	20	77
3. Dhauliganga Project	1,77	1,11
4. Tanakpur Project	-	56
5. Konkan Project	1,01	77
6. Rangit Project	-	-
	2,98	3,97
<b>D. Own Projects under construction</b>		
<b>1. Baira Siul Project</b>		
a) Direct Expenditure	1,25,69	95,02
b) Corporate Office share	4,56	7,18
	1,30,25	1,02,20
<b>2. Loktak Project</b>		
a) Direct expenditure	1,59,48	3,22,05
b) Corporate Office share	11,86	13,72
	1,71,34	3,35,77
<b>3. Koel Karo Project</b>		
a) Direct expenditure	56,58	46,34
b) Corporate Office Share	1,01	1,56
	57,59	47,90

(Rs. in thousands)

Particulars	31.3.1985	31.3.1984
<b>4. Dulhasti Project</b>		
a) Direct expenditure	2,00,05	81,62
b) Corporate Office share	23,02	15,58
	<u>2,23,07</u>	<u>97,20</u>
<b>5. Chukha Transmission Construction Unit.</b>		
a) Direct expenditure	2,01,28	79,05
b) Corporate Office share	47,41	59,02
	<u>2,48,69</u>	<u>1,38,07</u>
<b>6. Chamera H.E. Project</b>		
a) Direct Expenditure	16,35,00	2,49,14
b) Corporate Office share	1,36,91	2,75
	<u>17,71,91</u>	<u>2,51,89</u>
<b>7. Jeypore-Talchar Transmission Construction Unit</b>		
a) Direct Expenditure	58,56	60
b) Corporate Office share	21,81	1
	<u>80,37</u>	<u>61</u>
<b>8. Tanakpur H.E. Project</b>		
a) Direct Expenditure	73,12	
b) Corporate Office share	12,41	
	<u>85,53</u>	
<b>E. Projects Under Operation</b>		
1. Bairasiul Project	24,27	21,52
2. Loktak Project	10,66	1,45
	<u>34,93</u>	<u>22,97</u>
	<u>29,33,98</u>	<u>11,09,42</u>

**CURRENT ASSETS, LOANS AND ADVANCES****SCHEDULE-VII**  
(Rs. in thousands)

Particulars		31.3.1985	31.3.1984
<b>1. INVENTORIES</b>			
Stores & Spare Parts (at estimated cost)		15,68,96	23,66,49
<b>2. CASH &amp; BANK BALANCES</b>			
i) Cash, imprests, Postal Orders & Postal Stamps		33,74	21,59
ii) Balances with Scheduled Banks			
Savings Bank Account		29,16,27	48,06,53
Short-Term Deposits		90,00	-
iii) Balances with Non-scheduled Banks			
<b>Maximum balance during the year</b>			
Current Accounts	<b>1984-85</b>	<b>1983-84</b>	
Nepal Rashtra Bank, Kathmandu	15,73	48,99	1,86
Nepal Bank Ltd, Trishuli	53,62	53,62	7,18
			53,62
<b>3. SUNDRY DEBTORS</b>			
i) Debts outstanding for a period exceeding six months. (Considered good)	17,71,12		
ii) Other debts less than six months (Considered good)	17,50,85	35,21,97	25,36,37
<b>4. OTHER CURRENT ASSETS</b>			
i) Interest accrued on Deposits		41,98	30,06
ii) Workshop & General Suspense		19,38	66,01
<b>5. LOANS &amp; ADVANCES</b>			
Advances recoverable in cash or kind or for value to be received			
Secured (Considered good)		60	-
Unsecured (Considered good)		84,27,73	34,88,45
<b>Loans</b>			
To Employees (Secured)		76,11	42,40
Balance with Customs and Port Trust Authority		10,75,83	1,20
		<u>1,77,81,61</u>	<u>1,34,20,15</u>

**NOTE:**

- Advances due from Directors Rs. 1559/- (Maximum amount due at any time during the year amounts to Rs. 27,624/- (Previous year Rs. 548/-).
- Advances due by Companies in which any Director of the Corporation is a Director or member, amounts to Rs. 13.33 lacs (Previous year Rs. 58.89 lakhs).

**CURRENT LIABILITIES AND PROVISIONS**

**SCHEDULE-VIII**  
(Rs. in thousands)

Particulars	31.3.1985	31.3.1984
<b>LIABILITIES</b>		
1. Sundry Creditors	6,13,95	5,81,68
2. Unspent amount of Deposit/Agency works	3,05,43	1,60,24
3. Deposits, Retention Money from Contractors and others	4,03,52	2,85,60
4. Other Liabilities	10,01,59	6,05,63
5. Interest accrued but not due on loans	5,15,07	4,44,14
6. Liability for Cheques issued	27,45,93	22,39,57
<b>TOTAL:</b>	<b>55,85,49</b>	<b>43,16,86</b>

**DETAILS OF DEPOSIT WORKS AND PROJECTS ON AGENCY BASIS**

**ANNEXURE TO SCHEDULE-VIII**

(Rs. in thousands)

Sl. No.	Particulars	Amount of deposit upto 31.3.85	Expenditure upto 31.3.84	Expenditure during the year	Share of Corporate Office Expenditure	Total Expen. upto 31.3.85	Unspent amount						
1.	2.	3.	4.	5.	6.	7.	8.						
<b>A. DEPOSIT WORKS</b>													
<b>TRANSMISSION CONSTRUCTION UNIT</b>													
	1. Gangtok to Melli-Kalimpong	4,24,13	4,18,46	1,15	2	4,19,63	4,50						
	2. Gangtok to Dikchu												
	3. Liematak-Jiribam							4,51,80	4,19,84	26,97	54	4,47,35	4,45
	4. Ramnagar-Gandak							1,77,30	1,58,06	2	-	1,58,08	19,22
	5. Neepeco							4,00	3,11	4,04	8	7,23	(-) 3,23*
<b>B. PROJECTS ON AGENCY BASIS</b>													
	1. Salal Project	2,94,08,41	2,16,29,67	75,95,54	1,24,73	2,93,49,94	58,47						
	2. Devighat Project	42,18,42	38,79,40	1,16,07	1,90	39,97,37	2,18,79						
	3. Nuwakot R.E. Project	-	-	2,23	3	2,26							

NOTE:- Expenditure on Transmission Construction Units and Projects on Agency basis represents cash expenditure only and does not include accrued expenditure. Expenditure, however, includes advances to staff, advances to suppliers, contractors, deposits and unconsumed stock etc.

\* Represents amounts recoverable from NEEPCO.

**MISCELLANEOUS EXPENDITURE****SCHEDULE-IX**  
(Rs. in thousands)

Particulars	31.3.1985	31.3.1984
<b>MISCELLANEOUS EXPENDITURE TO THE EXTENT NOT WRITTEN OFF OR ADJUSTED</b>		
1. Preliminary expenses	28,01	32,01
2. Deferred Revenue Expenditure	4	-
	<u>28,05</u>	<u>32,01</u>

**MISCELLANEOUS INCOME****SCHEDULE-X**  
(Rs. in thousands)

Particulars	31.3.1985	31.3.1984
1. Other Miscellaneous receipts and recoveries	5,18	1,56
2. Electricity charges	-	4,18
3. Profit on Sale of Fixed Assets	4,88	-
	<u>10,06</u>	<u>5,74</u>
<b>TOTAL</b>		

**EMPLOYEES' REMUNERATION AND BENEFITS****SCHEDULE-XI**  
(Rs. in thousands)

Particulars	31.3.1985	31.3.1984
a) Salaries, wages & allowances	2,53,00	1,76,90
b) Company's contribution to Provident Fund	10,72	8,35
c) Contribution to Gratuity Fund	4,53	2,34
d) Staff welfare expenses	27,21	30,83
	<u>2,95,46</u>	<u>2,18,42</u>
<b>TOTAL</b>		

**GENERATION, TRANSMISSION AND ADMINISTRATION EXPENSES****SCHEDULE-XII**  
(Rs. in thousands)

Particulars	31.3.1985	31.3.1984
<b>GENERATION &amp; TRANSMISSION EXPENSES</b>		
1. Consumption of Stores and Spares	25,92	31,56
2. Repairs and Maintenance		
a) Buildings	36,79	16,91
b) Machinery	1,00,31	50,49
c) Others	86,06	42,17
3. Wheeling Charges	50,11	62,07
4. Other Operational Expenses	22	19
<b>ADMINISTRATION EXPENSES</b>		
5. Rent	39	2,60
6. Rates & Taxes	58	21
7. Insurance	5,85	5,39
8. Electricity charges	2,30	1,35
9. Water charges	-	1
10. Travelling & Conveyance	9,59	13,49
11. Expenses on Staff Cars	71	4,00
12. Telephone, Telex and Postage	1,95	2,55
13. Consultancy charges	4,31	4,53
14. Advertisement & Publicity	71	1,06
15. Entertainment	16	55
16. Printing & Stationery	4,45	1,96
17. Corporate Office Management expenses	36,99	72,08
18. Other Miscellaneous expenses	10,68	8,55
19. Loss on Sales of Assets	5	15
20. Other Expenses on Construction Management	37,54	-
<b>TOTAL</b>	<b>4,15,67</b>	<b>3,21,87</b>

## EXPLANATORY NOTES

1. Contingent liabilities exist in respect of the following:-
  - a) Claims against the Company not acknowledged as debts amounting to Rs. 384.86 lakhs (Previous year Rs. 124.02 lakhs) excluding the cost of a piece of land at Torpa (Ranchi), the value of which cannot be ascertained at present.
  - b) Income-tax demands/liabilities Rs. 563.82 lakhs (Previous year Rs. 151.42 lakhs).
  - c) Estimated amount of contracts remaining to be executed on capital accounts and not provided for is Rs. 2497.66 lakhs (Previous year Rs. 1490.38 lakhs). The Contingent liability, if any, in respect of the Projects executed on Agency basis, Deposit works and works executed against grant-in-aid have not been included as the Corporation does not anticipate any liability.
2. The Government of Himachal Pradesh has raised a claim against the Corporation for share of profit earned from Baira Siul Project. As per the revised formula approved by the Central Government, the Royalty @ 1.5 paise per unit is only payable to the State Government and accordingly the provision for Royalty amounting to Rs. 98.76 lakhs during the year has been made.
3. The cost of land represents provisional/initial payments towards compensation and other incidental expenses. The land Registers could not be completed for want of details of acquisition costs etc. The title of the land has also not been passed on to the Corporation pending completion of legal formalities.
4. Rs. 493.68 lakhs included under "communication" in construction work-in-progress relates to expenditure incurred on Roads, Bridges and Culverts on land not belonging to Corporation and will be allocated in terms of Accounting Policy No. 10.
5. The Priced Stores Ledgers are not complete and have not been reconciled in some of the units. Therefore, the balance of Rs. 1568.96 lakhs reflected in the accounts is as per the General Ledgers.
6. The amount standing to debit/credit of parties, material issued on loan and stock issued to the Contractors and Fabricators and Advances are subject to confirmation and reconciliation.
7. In certain cases, the complete relevant details relating to outstanding advances to staff/department is under preparation and reconciliation.
8.
  - a) The agreement for the supply of power with Delhi Electric Supply Undertaking and Himachal Pradesh State Electricity Board is under finalisation. Pending finalisation of the agreement, the sale to DESU and HPSEB has been accounted for on a provisional basic rate of 37.55 paise & 38.90 paise upto 31.12.1984 and thereafter @ 29.20 paise & 30.20 paise respectively.
  - b) The Agreement for supply of power with the States of Assam, Nagaland and Manipur has not been finalised. Pending finalisation of the Agreement, the sale to these States from Loktak Project has been accounted for at a provisional basic rate of 45.7 paise per unit.
9. **In Baira Siul Project:**
  - a) The Current Assets and Liabilities include balance of Rs. 172.87 lakhs and Rs. 159.37 lakhs respectively on account of stores/electricity issued to Contractors/Advance payment to Suppliers and Sundry Creditors for supply of materials after reducing minus balance of Rs. 27.58 lakhs and Rs. 183.23 lakhs respectively. The list of balances including the minus balances are being reviewed for correction.
  - b) Unpaid wages and payment control account amounting to Rs. 0.91 lakhs and Rs. 9.16 lakhs respectively are under review and reconciliation.
  - c) Claims amounting to Rs. 3.55 lakhs lodged with Insurance Companies will be accounted for as and when realised.
10. **In Chamera Project:**
  - a) Imported equipment received could not be capitalised pending determination, inspection and final acceptance except to the extent of Rs. 305.65 lakhs which has been capitalised at a provisional rate of Rs. 8.65 per Canadian Dollar. Similarly, imported spares/stores could not be adjusted pending determination and identification of such items and its value.



- b) Loans and Advances include services/goods rendered or supplied but not adjusted in accounts as the complete details could not be determined in such cases.
- c) Corporation has deposited adhoc amount of Rs. 495.60 lakhs with Income Tax Department on Consultancy Fees paid to Foreign Consultants. The adjustments to final heads will be carried out in the Accounts after determination of tax liability by the Income Tax Department.
11. **In Jeypore-Talchar Transmission Unit:**
- a) The Corporation has purchased the Jeypore-Talchar Transmission Unit along with all its Assets and Liabilities from Orissa State Electricity Board. Pending determination of transfer price, the Corporation has paid an advance of Rs. 762.60 lakhs against the claim of Orissa State Electricity Board of Rs. 821.68 lakhs out of which Rs. 713.20 lakhs has been provisionally accepted and adjusted in Accounts.
- b) Loans and Advances include Rs. 202.70 lakhs of conductor lying at supplier's works.
- c) Work in progress and Loans and Advances include Rs. 709.81 lakhs of fabricated material for towers lying in stores at site.
12. The Corporation has revised the Depreciation Policy during the year. Accordingly, depreciation on Assets, Plant and Machinery, Equipment etc. used for Generation/Transmission, Operation and Maintenance of Generating Station has been charged with reference to the rates ascertained under notification issued under sub-section (1) of Section 68 of Electricity (Supply) Act, 1948. The Electricity (Supply) Act does not specify the rate for major items of construction plants, machinery and equipment and for such items, depreciation has been provided as per Companies Act as hereto before. Subject to the approval of the Government, the depreciation has been provided in the accounts as per Accounting Policy No. 8. Had the earlier depreciation policy continued, the amount of depreciation would have been higher by Rs. 825.47 lakhs and profit reduced by that amount.
13. In Chukha Project, pending receipt of verified bills and other related documents, no provision has been made in respect of some Capital Stores received and consumed within the year against which advance payments have not been adjusted.
14. Previous year's figures have been suitably re-arranged, wherever practicable, to correspond to the current year's figures.

**ADDITIONAL INFORMATION REQUIRED UNDER PART II OF  
SCHEDULE VI OF THE COMPANIES ACT, 1956**

**SCHEDULE-XIV**

Particulars	1984-85	1983-84
<b>1. EXPENDITURE ON EMPLOYEES</b>		
Expenditure on employees who are in receipt of remuneration not less than Rs. 36,000/- per annum if employed throughout the year or Rs. 3,000/- per month if employed for part of the year		
<b>a) Employed throughout the year</b>		
i) Number of employees	252	156
ii) Salary & Wages (Rs. in thousands)	1,16,06	60,10
iii) Value of perquisites (Rs. in thousands)	1,11	95
<b>b) Employed for part of the year</b>		
i) Number of employees	35	22
ii) Salary & Wages (Rs. in thousands)	10,75	4,44
iii) Value of perquisites (Rs. in thousands)	52	11

(This does not include employees at Salal and Devighat which are being executed on agency basis and the remuneration of such employees is debited to deposits from the Government of India and are not debited to the Corporation's Incidental Expenditure during Construction).

However, information for Salal & Devighat Projects is as under:

	1984-85		1983-84	
	Salal	Devighat	Salal	Devighat
<b>a) Employed throughout the year</b>				
i) Number of employees	37	8	13	20
ii) Salary & Wages (Rs. in thousands)	13,92	3,77	5,35	10,48
iii) Value of perquisites (Rs. in thousands)	1,74	47	53	9
<b>b) Employed for part of the year</b>				
i) Number of employees	1	9	2	11
ii) Salary & Wages (Rs. in thousands)	33	2,08	57	3,44
iii) Value of perquisites (Rs. in thousands)	4	26	3	21

**NOTE:**

- (1) The Gratuity amount has not been taken into account as the same has been provided on the basis of Gratuity-cum-L.I.C. Policy taken with the Life Insurance Corporation.  
(2) Emoluments of Devighat employees include foreign allowances.

	(Rs. in thousands)			
	1984-85		1983-84	
<b>2. EXPENDITURE INCURRED IN FOREIGN CURRENCY</b>				
i) Know-how		—		—
ii) Other Miscellaneous Matters		17,16,47		3,05
<b>3. VALUE OF SPARE PARTS &amp; COMPONENTS CONSUMED (O &amp; M PROJECTS)</b>				
i) Imported		—		—
ii) Indigenous		2592 100%		3156 100%
<b>4. Value of imported plant &amp; machinery and spares</b>		14,90,34		156

**5. Licensed/Installed Capacity & Actual Production**

	Baira Siul		Loktak	
	1984-85	1983-84	1984-85	1983-84
1. Licensed Capacity	180 MW	180 MW	105 MW	105 MW
2. Installed Capacity	180 MW	180 MW	105 MW	105 MW
3. Actual Production (in million units)	660.782	849.477	260.169	36.134
4. Value (Rs. '000)	257175	236878	107321	15190
	(641.240 MU)(800.820 MU)(233.290 MU)(32.666 MU)			

## ACCOUNTING POLICIES

1. Liability accruing from year to year on account of service gratuity is discharged by paying requisite premium on LIC policy and accounted for in the year of payment.
2. Liability for payment for imported equipment/services is worked out with reference to the rate of exchange ruling on the date of payment.
3. The Corporation has received grants-in-aid for investigation of various projects. The balance of grants-in-aid has been reflected in accounts under Liabilities and Provisions after deducting expenditure incurred on the investigation works. The ownership of the assets for the expenditure incurred from grants-in-aid does not vest with the Corporation and hence is not included in the assets of the Corporation.
4. Liability, if any, for capital works executed but not measured has not been provided as the works have not been finally inspected and accepted by the Corporation. Similarly, liability for material in transit has not been provided till the time of receipt, inspection and acceptance of the material by the Corporation.
5. The completed assets have been capitalised on the basis of cost incurred on construction of such assets. However, where the actual expenditure could not be determined, the same has been determined on the basis of estimated cost.
6. The amounts contributed by other agencies including State Governments towards part of cost of certain Assets belonging to Corporation have been reduced from the cost of such Assets and the net cost has been shown in the Accounts.
7. In the Projects under construction, the grant/share of cost/expenditure incurred on the assets on land not belonging to the Corporation has been accounted for under construction work-in-progress pending final allocation.
8. Depreciation on Assets, Plant & Machinery, equipment etc. used for generation/transmission, operation and maintenance of generating stations has been charged with reference to the rates ascertained under notification issued under sub-section 1 of Section 68 of Electricity (Supply) Act, 1948 from the year following the year in which the Assets are put up to use. Depreciation on construction plant and machinery, equipment, transport vehicles, office equipment, buildings are provided upto 95% of the cost on Straight Line method by dividing the original cost of the Assets by the specified period calculated in accordance with the Income Tax Act, 1961 and rounded to the next two decimals on higher side.
9. (a) Inter Project/Unit transfers of plant and machinery and stores are transferred at Book Value.  
(b) Surplus/obsolete stores and equipment lying at the Projects are being identified on periodical intervals. The surplus items so identified are being transferred to other projects/Units of the Corporation where the same are required. Surplus equipment/stores are also given to other Projects/Undertakings/Departments of the Central/State Governments depending upon their requirements for such items. Depreciation is not provided on machinery and equipment declared surplus to the requirement of Project/Unit. The losses, if any, on disposal is being accounted after the disposal of such items.
10. The total amount of incidental expenditure during construction and intangible expenditure incurred on the project which has been put to commercial operation during the year have been allocated on the tangible fixed immovable assets excluding land on the basis of cost appearing/adjusted as on 1st day of the start of commercial production.
11. Value of stock of capital stores and revenue stores lying at various work/sites has been directly charged to construction work-in-progress and generation, transmission and administrative expenses respectively.
12. The petty items and tools, the individual value of which is less than Rs. 100/- has been charged to consumption account. The value of loose tools costing Rs 100/- and more in each case has been capitalised and shown under loose tools. The value of loose tools so capitalised has been written off in 5 equal annual instalments by debit to consumption of loose tools.
13. The Corporate Office expenses excluding advances and assets but including remuneration to surplus employees is allocated as under:-
  - (a) On the existing Transmission Lines being executed by the Corporation as deposit works at a flat rate of 2% of the direct capital expenditure incurred. The profit or loss if any, on deposit work taken on fixed Administration/Management fees would be adjusted/accounted for on completion of such work and finalisation of its account.

(b) Estimated Design expenses incurred in the Corporate Office in respect of Projects/Units on the basis of quantum of services rendered to the respective Projects/Units.

(c) On operational projects @ 1% of sales of energy excluding wheeling charges and excise duty.

(d) The balance expenditure is allocated to Projects under construction, investigation, agency basis and capital expenditure on operational Projects on pro-rata basis in the ratio of their net capital expenditure incurred during the year.

14. The interest, if any, to be received on overdue payments for the sale of energy, and advances given to the staff, suppliers etc. has been accounted for as and when actually received and not on the basis of accrual.
15. Expenses or income related to earlier years incurred or realised during the current year have been shown under the heading "Prior Period Adjustments" only if the amount involved is more than Rs. 5000/- in each case. However, the difference in sales revenue for January to March of each previous year, on account of revision of tariff rate based on actual generation during calendar year, has not been taken as prior period adjustment.
16. The liability, if any, on account of reimbursement of deficit of Employees Provident Fund Trusts are accounted for as and when the amounts are paid to the Trusts.
17. In operational projects, where the construction activity is still continuing, the common service expenses have been primarily allocated on the basis of estimated services rendered to/benefit derived by each activity i.e. construction/operation.

## AUDITORS' REPORT

To the Members of National Hydroelectric Power Corporation Limited.

We have audited the attached Balance Sheet of National Hydroelectric Power Corporation Limited as at 31st March, 1985 and the Profit and Loss account for the year ended on that date, annexed thereto, in which are incorporated the accounts of the projects/units audited by the branch auditors.

- I. As required by the Manufacturing and other Companies (Auditors' Report) Order, 1975, issued by the Company Law Board in terms of Section 227(4A) of the Companies Act, 1956, we enclose in the annexure to this report, a statement on the matters specified in paragraphs 4 & 5 of the said Order.
- II. Subject to our comments in the annexure referred to above, we report as under:-
  1. We have obtained all the information and explanations, which to the best of our knowledge and belief, were necessary for the purpose of our audit;
  2. In our opinion, proper books of accounts, as required by law, have been kept by the company, so far as appears from our examination of the books and proper returns, adequate for the purpose of audit, have been received from the projects/units not visited by us;
  3. The reports of the branch auditors, in respect of projects/units not audited by us, have been received and the same have been considered while preparing our report;
  4. The Balance Sheet and the Profit & Loss account dealt with by this report are in agreement with the books of accounts and returns;
  5. In our opinion, and to the best of our information and according to the explanations given to us, the said accounts together with the Accounting Policies and Explanatory Notes forming part thereof, and subject to:
    - (i) no provision having been made against the loss estimated by the management to be Rs. 71.54 lacs, resulting from the collapse of approx. 35 mts of a tunnel, at Loktak Project, which had to be abandoned, as a result of which a tunnelled by-pass had to be constructed;
    - (ii) no provision having been made for North Eastern Allowance which had been sanctioned, on 1st June, 1985, to employees with effect from 1st November, 1983: the quantum of liability has not yet been computed;
    - (iii) no provision having been made for losses arising out of theft/shortage/breakages valued at Rs. 53.11 lacs and mentioned in Note No. 2 below the statement on Incidental Expenditure During Construction and no adjustment having been made for Rs. 10.83 lacs worth of material short received/damaged at the Jeypore-Talchar Transmission project which is included in Capital Work-In-Progress and is replaceable by the contractor;
    - (iv) non-reconciliation of Rs. 211.73 lacs lying in Other Liabilities account in Chamera H.E. Project;
    - (v) no provision having been made in respect of penal interest that may be charged, at a rate of upto two and three-quarter percent, on loans, received by the company from the Government of India for Loktak Project, which have not been repaid in time and in respect of which the company has applied to the Government for extending the various repayment dates. The amount of unprovided liability, if any, has not been quantified by the company;
    - (vi) inter-unit transfer suspense account shows a net figure of Rs. 2.64 lacs, in respect of which adjustments are yet to be made;
    - (vii) no acknowledgement having been received from His Majesty's Government, Nepal, for the transfer of works, assets and stores valued at Rs. 3951.26 lacs at Devighat Project;
    - (viii) prior permission not having been received from the Government for the selling/auctioning of fixed assets and stores at the Devighat Project. Such sales/auction have resulted in a loss of Rs. 12.69 lacs on sales of assets valued at Rs. 21.29 lacs;

(ix) accounting policy No. 2 regarding provision of liability for imported equipment services; accounting policy No. 9(b) regarding the provision on losses arising out of surplus stores; and accounting policy No. 13 regarding allocation of remuneration to surplus labour at operational projects, amounting to Rs. 151.34 lacs to the cost of various non-operational projects, resulting in the overstatement of the profit for the year by that amount;

(x) **NOTES:**

- (a) No. 1(a) which includes in the amount of contingent liabilities a sum of Rs. 189.19 lacs towards ex-gratis payment to staff, pending decision of the Government regarding bonus/ex-gratia to employees;
- (b) No. 2. regarding the provision for royalty payable to Himachal Pradesh Government, in respect of Baira Siul Project;
- (c) No. 3. regarding accounting for the cost of land on the basis of provisional/initial payments and the non-completion of land registers and legal formalities;
- (d) No. 5. regarding non-completion and non-reconciliation of priced stores ledgers maintained at the different projects and the adoption of the general ledger balances as the value of inventory;
- (e) No. 6. & No. 10(b) regarding the non-reconciliation and consequently non-adjustment, of various loans and advances given to contractors, fabricators and suppliers. Pending the verification of supplies/work done, the effect on various account heads cannot be quantified;
- (f) No. 7. regarding non-reconciliation and consequently non-adjustment, of advances given to staff/departments.
- (g) No. 8. regarding the adoption of provisional rates for the sale of power to Delhi Electric Supply Undertaking, Himachal Pradesh State Electricity Board, and the States of Assam, Nagaland and Manipur;
- (h) No. 9. regarding non-reconciliation and review of various jobs and credit balances appearing under advances to suppliers, sundry creditors and other parties; and regarding non-reconciliation of unpaid wages amounting to Rs. 0.91 lakhs and of Rs. 9.16 lacs in the payment control account;
- (i) No. 10(a) regarding capitalisation of imported equipment valued at Rs. 305.65 lacs at a provisional rate of Rs. 8.65 per Canadian Dollar and non-accounting of imported stores and spares.
- (j) No. 11. regarding the non-finalisation of the transfer price of the Jeypore-Talchar Transmission System; regarding the inclusion of material purchased by the Corporation, valued at Rs. 202.70 lacs, lying at suppliers' works and being depicted under loans and advances; and regarding tower parts, lying in stores at site, being included in Capital Works-In-Progress and in Loans and Advances;
- (k) No. 12. regarding a change in the policy for charging depreciation as a result of which the profit for the year is higher by Rs. 825.47 lacs than it would have been if the previous accounting policy had continued to be in use;
- (l) No. 13. regarding Capital Work-In-Progress being understated in Chukha owing to non-adjustment of advances besides no provision/adjustment has been made for Rs. 20 lakhs lying in Material Purchase suspense in respect of material despatched from various units which could be traced and identified;

give the information required by the Companies Act, 1956 in the manner so required and give a true and fair view:

i) in the case of Balance Sheet, of the state of affairs of the Corporation, as at 31st March, 1985;

ii) in the case of Profit & Loss Account, of the profit of the Corporation, for the year ended on the date.

New Delhi.  
Dated 17th September, 1985.

for S.L. KHINDARIA & CO.  
Chartered Accountants  
S.L. Khindaria  
PARTNER

## ANNEXURE TO THE AUDITORS' REPORT

### Referred to in our Report of even date.

- A (i) The Company has maintained proper records for a major portion of the fixed assets. Records show situational details, in respect of moveable assets, in two Units only. Physical verification of fixed assets has been carried out in Calcutta Liaison Office, Koel Karo and Dulhasti Projects only and partially in Chamera and Tanakpur Projects. No provision has been made in respect of some discrepancies noticed, nor for losses due to fire or damage to machines at Chamera Project. Some assets brought into use at Dulhasti, Tanakpur and Jeypore-Talchar Projects have not been capitalised.
- (ii) Fixed assets have not been revalued during the year.
- (iii) Physical verification of stores and spare parts has been conducted during the year except at Jeypore-Talchar Transmission System, where all stores and store records, if any, have been maintained by the agents of the Company only. Except for discrepancies amounting to Rs. 1.14 lakhs, at Koel Karo Project, no serious discrepancies have been noticed on such physical verification. No report about discrepancies, if any, has been received regarding the stores in Baira Siul Project. Losses on account of shortages, thefts, damages etc., estimated at Rs. 53.11 lakhs, are under investigation and have not been adjusted in the books of accounts. Adjustments have not been made in respect of the above discrepancies and neither in respect of stores issued or received for which reconciliation etc., is pending as stated in the Explanatory Note Nos. 9(a), 10(b) and 13. As stated in Explanatory Note No. 5, the value of inventory is as per the general ledger, since priced stores ledgers have not been completed and reconciled.
- (iv) The Corporation has not taken any loans secured or unsecured from Companies, firms, or other parties listed in the register maintained under Section 301 and 370(I-C) of the Companies Act, 1956.
- (v) The Company has given advances in the nature of loans only to the employees of the Corporation. The employees are generally repaying the principal amounts as stipulated and are also generally regular in making payment of interest. The Corporation has taken over an advance in the nature of loan, given by the O.S.E.B. to a contractor, when taking over the Jeypore-Talchar Transmission System. This advance in the nature of loan had been given by O.S.E.B. without interest. The principal amount is being recovered in instalments.
- (vi) In our opinion, the internal control procedure with regard to purchase of stores, plant and machinery, equipment and other assets is commensurate with the size of the company and nature of its business. The laid down procedures need to be strictly followed.
- (vii) On the basis of information made available to us, no purchases have been made, during the year, of stores and spare parts or components, exceeding Rs. 10,000/- in value for each type, from firms or companies or other parties in which the Directors are interested.
- (viii) As mentioned in accounting policy No. 9(b) the surplus/obsolete stores lying at the projects are in the process of being identified and provisions, if any, will be made at the time of disposal of such stores.
- (ix) The Corporation has not accepted any deposits from the public.
- (x) As explained to us, no by-products or scrap has been generated during the course of generation of electricity.
- (xi) The Company has an internal audit system in operation. As compared with the previous year, there has been improvement in the total coverage by the internal audit. However, the system is not commensurate with the size of the company and the nature of its business and the scope needs to be further strengthened and follow up action speeded up.
- (xii) Maintenance of cost records has not been prescribed by the Central Government under Section 209(1)(d) of the Companies Act, 1956.
- (xiii) Provident Fund dues have not been deposited within the stipulated time with the appropriate authorities during the year, except in some cases.



B In respect of agency works/deposit works:

- (i) The Company has a reasonable system of recording receipts, issues and consumption of stores and materials. Such system also provides for a reasonable allocation of the materials and man-hours consumed to relevant projects.
- (ii) There exists a reasonable system of authorisation at proper levels with necessary control on the issue of stores and allocation of stores and labour to jobs. The internal control system needs strengthening, considering the size of the company and nature of its business.

New Delhi.  
Dated 17th September, 1985.

for S.L. KHINDARIA & CO.  
Chartered Accountants  
S.L. Khindaria  
PARTNER

## COMMENTS OF THE COMPTROLLER AND AUDITOR-GENERAL OF INDIA UNDER SECTION 619(4) OF THE COMPANIES ACT, 1956.

I have to state that the Comptroller and Auditor-General of India has no comments upon or supplement to the Auditor's report, under Section 619(4) of the Companies Act, 1956, on the accounts of National Hydroelectric Power Corporation Limited, New Delhi for the year ended 31st March, 1985.

Bhopal  
Date: 24th September, 1985

Sd/-  
(P.V. KRISHNAMURTHY)  
Member, Audit Board & *Ex-Officio*  
Director of Commercial Audit

Review of accounts of National Hydroelectric Power Corporation Limited for the year ended 31st March, 1985 by the Comptroller and Auditor-General of India.

**1. FINANCIAL POSITION**

The Table below summarises the financial position of the Company under broad headings for the last three years.  
(Rs. in Lakhs)

**LIABILITIES**

	1982-83	1983-84	1984-85
(a) Paid-up capital (including shares application money pending allotment)	14,840.09	22,044.03	31,287.66
(b) Reserves & Surplus	2,344.74	2,344.74	2,344.74
(c) Borrowings			
(i) From Govt. of India	14,548.19	13,714.64	16,083.16
(ii) From other sources	—	—	1,404.79
(d) Trade dues and other current liabilities (including provisions)	3,902.04	4,360.57	5,684.43
	<u>35,635.06</u>	<u>42,463.98</u>	<u>56,804.78</u>

**ASSETS**

(e) Gross block	15,905.95	26,552.00	29,639.06
(f) Less Depreciation	1,673.30	3,088.54	2,379.44
(g) Net fixed assets	14,232.65	23,463.46	27,259.62
(h) Capital Work-in-Progress	11,793.78	3,321.02	11,653.74
(i) Current Assets, Loans and Advances.	7,995.85	13,420.15	17,781.61
(j) Investments	—	—	—
(k) Miscellaneous expenditure & Losses	1,612.78	2,259.35	109.81
	<u>35,635.06</u>	<u>42,463.98</u>	<u>56,804.78</u>
(l) Capital Employed	18,326.46	32,523.04	39,356.80
(m) Net Worth	15,572.05	22,129.42	33,522.59

NOTE: (i) Capital employed represents net fixed assets plus working capital.  
(ii) Net worth represents paid-up capital plus reserves and surplus less intangible assets.  
(iii) Only Baira Siul Project at Surangani (HP) and Loktak Project at Manipur started Commercial production w.e.f. 1.4.1982 and June, 83 respectively and remaining projects are still under construction stage.

## 2. CAPITAL STRUCTURE

**Debt - Equity Ratio:** The debt-equity ratio for the company was 0.98:1 in 1982-83, 0.62:1 in 1983-84 and 0.56:1 in 1984-85.

## 3. RESERVES & SURPLUS

The Reserves and Surplus of Rs. 2344.74 lakhs in 1982-83, 1983-84 and 1984-85 amounted to 6.58%, 5.52% and 4.13% of total liabilities respectively and 15.80%, 10.64% and 7.49% of Equity Capital respectively.

## 4. LIQUIDITY AND SOLVENCY

(a) The percentage of current assets to total net assets varied from 22.44 in 1982-83 to 31.60 in 1983-84 and to 31.30 in 1984-85.

(b) The percentage of current assets to current liabilities (including provision) varied from 204.91 in 1982-83 to 307.76 in 1983-84 and to 312.81 in 1984-85.

(c) The percentage of quick assets (Sundry Debtors, Loans & Advances, Cash and Bank balances) to current liabilities (excluding provision) increased from 182.83 in 1982-83 to 253.49 in 1983-84 and to 285.21 in 1984-85.

## 5. WORKING CAPITAL

The working capital (current assets, loans and advances less trade dues and current liabilities excluding provisions for gratuity) of the company at the close of each of the three years ending 31st March, 1985 amounted to Rs. 4093.81 lakhs, Rs. 9059.58 lakhs and Rs. 12097.18 lakhs respectively. The working capital as on 31.3.1985 was financed through loans from Government of India and from other sources.

## 6. SOURCES AND USES OF FUNDS

Funds amounting to Rs. (-) 709.10 lakhs from internal sources (reserves, depreciation & provisions) and Rs. 14340.80 lakhs from other sources were utilised during the year 1984-85 as shown below:

	(Rs. in Lakhs)
Gross Block	3087.06
Capital work-in-progress	8332.72
Current Assets, Loans & Advances, Investment & Misc. expenditure not written off.	2211.92
	<hr/>
	13631.70
	<hr/>

## 7. WORKING RESULTS

The profit/(loss) incurred by the Company for the last three years were as follows:—

	Profit/(loss) for the year. (Rs. in Lakhs)	Percentage of Profit/(loss) to paid-up capital
1982-83	(1576.56)	(10.62)
1983-84	(650.78)	(2.95)
1984-85	2145.58	6.86

## 8. COST TRENDS

The table below indicates the percentage of cost of sales to sales during the last three years:—

	(Rs. in Lakhs)		
	1982-83	1983-84	1984-85
Sales excluding excise duty	2297.33	2361.73	3549.69
Less Profit/(Add loss) during the year	+(1576.56)	+(650.78)	(-)2145.58
Cost of sales	3873.89	3012.51	1404.11
Percentage of cost of sales to sales	168.63	127.56	39.56

## 9. PRODUCTION PERFORMANCE

The value of production for the last three years is worked out below:—

	(Rs. in Lakhs)		
	1982-83	1983-84	1984-85
1. Sales	2436.26	2520.68	3645.26
2. Closing stock of finished goods and Work-in-Progress	—	—	—
3. Opening stock of finished goods and Work-in-Progress	—	—	—
4. Value of production (1 + 2 - 3)	2436.26	2520.68	3645.26

The percentage of value of production to net worth varied from 15.65 in 1982-83 to 11.39 in 1983-84 and 10.87 in 1984-85. The percentage of value of production to total net assets of the Company varied from 6.84 in 1982-83 to 5.94 in 1983-84 and 6.42 in 1984-85.

## 10. INVENTORY AND PRODUCTION

The following table indicates the position of inventory and its distribution at the close of the last three years:—

	(Rs. in Lakhs)		
	1982-83	1983-84	1984-85
Stores and spare parts	861.82	2366.49	1568.96

## 11. SUNDRY DEBTORS

The following table indicates the volume of book debts and sales for the last three years:—

As On	(Rs. in Lakhs)		
	Total Book debts considered good	Sales	Percentage of debtors to Sales
31st March, 1983	2112.86	2436.26	86.73
31st March, 1984	2536.37	2520.68	100.62
31st March, 1985	3521.97	3645.26	96.62

The Sundry Debtors represented 11.59 months' sales in 1984-85 as against 12.07 months' in 1983-84 and 10.41 months' in 1982-83. Debts of Rs. 1.64 crores were outstanding for more than one year as on 31.3.1985.

Bhopal  
Dated: 24.9.1985

Sd/-  
(P.V. KRISHNAMURTHY)  
Member, Audit Board and *Ex-Officio*  
Director of Commercial Audit