



ANNUAL REPORT 2015-16

**CORPORATE SOCIAL
RESPONSIBILITY &
SUSTAINABILITY**

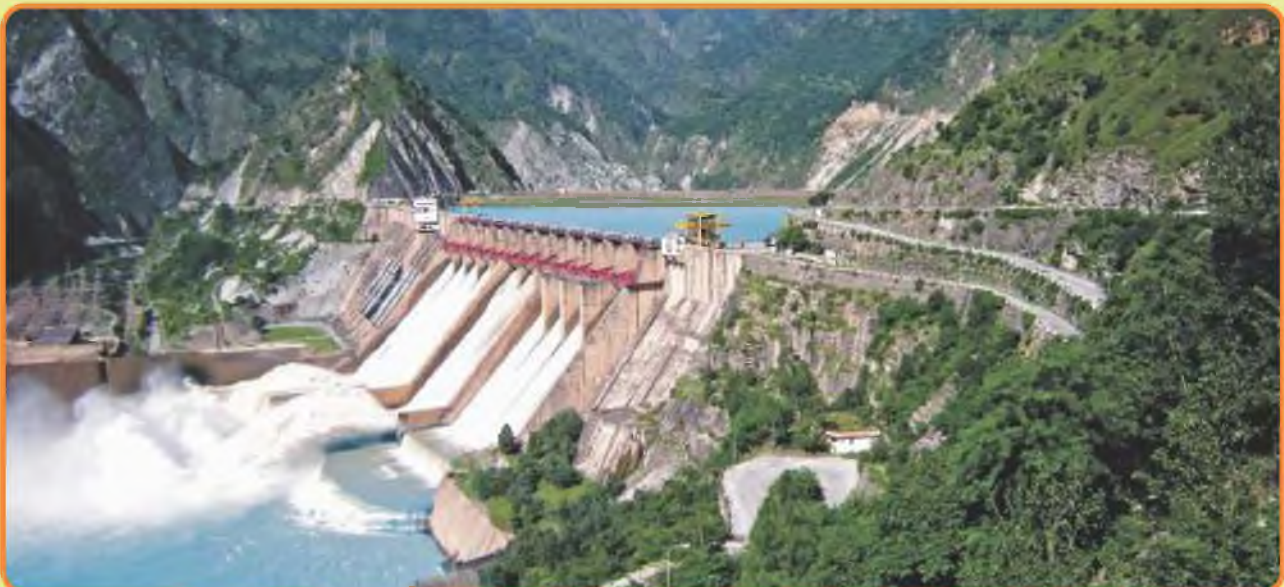




45 MW Nimoo Bazgo Power Station (Jammu & Kashmir)



120 MW Tanakpur Power Station (Uttarakhand)



690 MW Salal Power Station (Jammu & Kashmir)



Corporate social responsibility encompasses not only what companies do with their profits, but also how they make them. It goes beyond philanthropy and compliance, and addresses how companies manage their economic, social, and environmental impacts, as well as their relationships in all key spheres of influence: the workplace, the marketplace, the supply chain, the community and the public policy realm. Today every business needs to operate in conjunction with multiple stakeholders with diverse expectations.

CSR is an integral part of NHPC's business strategy. As CSR Policy is expected to permeate into all the processes and activities of a company, the collective and unified effort of all the employees including the active involvement of the top management is imperative. The top management of NHPC is committed to internalize its CSR agenda in the organization.

We feel pride in sharing with you that in NHPC every employee is committed to giving back to the society in certain key areas like Education, Rural Development, Sanitation, Health care etc. I congratulate the CSR & SD Division for successfully documenting the Annual Report on CSR for the FY 2015-16. It is heartwarming to see the kaleidoscope of programmes covered by the various CSR initiatives undertaken by NHPC's Projects/ Power Stations/ Units in the far flung areas of the country.

As one turns the pages of the Annual Report and goes through the CSR activities undertaken by NHPC, one can see how well NHPC's locations are addressing the expectations and aspirations of the people around them. Our locations have brought about a perceptible change in the lives of the people near the area of their operations and economic activity has also geared up around our establishments.

I am sure, NHPC shall continue to work unstintingly in promoting sustainable development in the country.

(K.M. Singh)

Chairman and Managing Director



Corporate Social Responsibility lays emphasis upon the role of Business in Society beyond the traditional role of maximizing profits. A company can manage its various roles in the society in a responsible manner.

Through CSR, NHPC is addressing the social, economic and environmental concerns of key stakeholders including those directly impacted by its operations and activities. NHPC has undertaken a number of CSR initiatives for the community living in and around its Projects / Power Stations / Units in the areas of Healthcare, Education, Rural Development, Skill Development, Environmental sustainability, Women Empowerment, Promotion of sports, arts & culture etc.

CSR activities undertaken by NHPC bear testimony to NHPC's commitment towards inclusive development of the community residing in the area of its operations. During FY 2015-16, an amount of Rs. 72.68 Crore has been incurred by NHPC towards various CSR initiatives undertaken by its Power Stations / Projects / Units.

I am happy that CSR & SD Division is bringing out Annual Report on CSR for the FY 2015-16 to highlight the CSR initiatives taken by NHPC's Power Stations/ Projects/ Units.

I appreciate the efforts of all those involved in CSR activities to keep up the good work in high spirits.

(Jayant Kumar)
Director (Finance)



NHPC has been actively involved in undertaking Corporate Social Responsibility activities, even before CSR spending was made compulsory in Companies Act 2013. The CSR provisions of the Companies Act, 2013 have gravitated Companies to undertake CSR activities in a strategic manner so that its intended outreach is maximized. It has been a smooth transition for us to embrace the mandated CSR, in its current form.

Business and social commitments are mutually reinforcing and neither will be sustainable without the other. Corporations need to believe in creating value for the underprivileged sections of the society, to enable them to lead a life with dignity.

In tune with our tradition and following the CSR, we have embarked upon inclusive programmes to ensure that the maximum benefits reach the poor / backward & needy sections of the society, while ensuring the compliance. Expenditure to the tune of Rs. 72.68 crore has been incurred on CSR & SD activities during the FY 2015-16, which is far in excess of the mandatory provisions. It is also creditable that under Swachh Vidyalaya Abhiyan NHPC, with the concerted efforts of its employees, has constructed 7045 nos. toilets in Govt. Schools located in 34 Districts of 8 States in India.

I am happy that the Annual Report on CSR for the FY 2015-16, showcasing the activities undertaken by NHPC's Projects/Power Stations/Units, is being published by CSR & SD Division.

(Balraj Joshi)

Director (Technical)



Corporate Social Responsibility has been an integral part of NHPC's business philosophy. NHPC is playing a significant role in the area of CSR by addressing the social, economic and environmental concerns of key stakeholders including those directly impacted by its operations & activities in a sustainable manner. NHPC has undertaken a number of CSR initiatives for the community living in and around its Projects / Power Stations / Units.

CSR & SD Division, NHPC Limited is pleased to bring out the Annual Report on CSR & SD for the year 2015-16. The report covers all the CSR & SD activities undertaken by NHPC during the F.Y. 2015-16 in the area of Education, Skill Development, Healthcare, Rural Development, Sanitation, Women Empowerment etc.

I express my gratitude to Sh. K. M. Singh, Chairman & Managing Director and members of the Committee of Directors on CSR & Sustainable Development viz. Sh. Arun Kumar – Chairman, Committee of Directors on CSR & Sustainability, Sh. Jayant Kumar & Sh. Balraj Joshi, Director (Tech.) for their support and guidance in the implementation of CSR & SD initiatives.

It is the whole hearted participation of all our employees, cutting across all functional domains, that NHPC could make significant contributions towards betterment of communities residing around our localities.

I acknowledge the leadership of all Heads of Power Stations, Projects, Regional Offices and Units for achieving the goals NHPC had set in the area of achieving CSR & SD goals. Last but not the least, I am all praise for the hard work put in by the entire CSR & SD Division, Corporate Communication Division for documenting this annual report in a meticulous manner.

(A. K. Mishra)

Executive Director (CSR & SD)

CONTENTS

1. Introduction	1
2. Corporate Social Responsibility at NHPC Limited.....	3
3. Outreach of NHPC's CSR Initiatives.....	4
4. Section-I Budget Allocation & Expenditure	7
5. Section-II Allocation Vs. Expenditure on CSR & Sustainability During Previous Years'	11
6. Section-III Sector Wise Expenditure on CSR & Sustainability during FY 2015-16	13
7. Section-IV Major CSR Initiatives by NHPC During FY 2015-16	15
8. Section-V Project wise details of CSR & SD Activities undertaken	22



Journey Begins





INTRODUCTION

Corporate Social Responsibility (CSR) is something which is broadly understood by everybody, but precisely it is difficult to fathom. History has always demanded and raised questions about the persons and entities that control capital and resources. Anybody engaged in fiscal or commercial activity has the potential to influence/ impact the Society and the people in various ways. It is always expected that anybody who is in a position of discretion will act in a responsible, compliant and ethical manner.

The issue of CSR becomes even more important when we have corporate organisations which are having turnover more than the GDP of many countries. We have corporates which handle sensitive issues and matters whether it is life saving drugs or aviation or electricity or infrastructure. Corporate continuously touch the lives of all the people in more than many ways. Corporates manage almost all kinds of resources of a country; human resources (intellectual and physical), natural resources, finance & capital resources, manmade resources.

In such a background, whether we understand CSR or not it becomes absolutely important to ensure that the organisations which are playing a pivotal role in the building of a nation and its sustenance and in some sense are yielding “maximum social advantage”, implying that their act is contributing and enriching all the stakeholders including themselves. That their act is not causing any short term or long term harm to the stakeholders, the nations and the posterity. Therefore, CSR is a multi-faceted phenomena rather than a formal function in the routine of the execution cycle of the company or only a compliance to be followed.

The normal understanding of CSR includes ethical, accountable and complaint behaviour. However, generally CSR is primarily perceived as Corporate Philanthropy; the contribution of Corporate to social/ charitable causes. Corporate philanthropy can be appreciated but cannot absolve the Corporate from being sustainable & environment/ stakeholder friendly.

India is the only country which has made CSR contribution statutory, however the statutory contributions towards CSR in itself does not assure responsible existence of a Corporate.

CSR POLICY OF NHPC

CSR & Sustainability Policy of NHPC was issued in December, 2013 with the approval of NHPC Board. The same was further amended and approved by the NHPC Board on 7th July, 2014 in line with the Companies Act, 2013 having specific provisions for CSR under Section 135 and also the Companies (Corporate Social Responsibility Policy) Rules, 2014 issued by the Ministry of Corporate Affairs, Government of India vide notification file No. 1/15/2013-CL.V dated 27.02.2014. Subsequently, clause 4.4 was amended and approved by the NHPC Board on 29th July, 2015.

Highlights of NHPC CSR Policy:

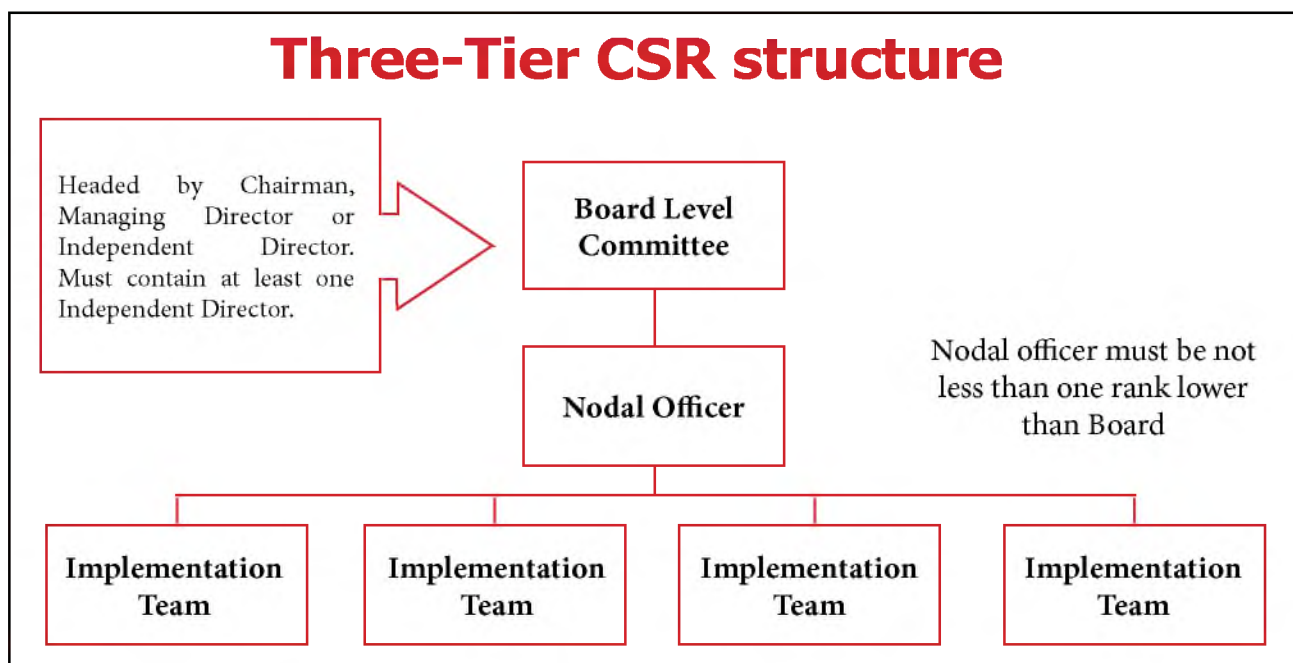
- An amount specified under subsection (5) of Section 135 of the Companies Act, 2013, which is at present, at least two percent of the average net profits of the company made during three immediately preceding financial years, is kept as the annual budget for CSR works during the year and approved by the Board of Directors.
- Preference to the Local area around NHPCs Projects has been given by allocating 80%

of Budget amount. However other locations may also be chosen based on the needs and as per the direction of GOI on national schemes and campaign for larger benefit of society/ environment.

- The CSR initiatives includes programs for facilitating education, health services, women empowerment, rural development, environment sustainability etc. in accordance with Schedule-VII of Companies Act, 2013.
- Selection of CSR & Sustainability schemes ensure maximum benefits reach the poor/ backward & needy sections of the society.
- NHPC is open to joining hands with the other CPSEs in planning, implementing and monitoring of Mega-Projects for optimal use of resources, synergy of expertise and capabilities for maximizing socio-economic or environmental impact.



Implementation and Monitoring of CSR & Sustainability Activities in NHPC



Corporate Social Responsibility at NHPC Limited

NHPC Ltd. is a Mini Ratna Category- I Company committed to plan, promote and organize an integrated and efficient development of power through conventional and non-conventional sources. NHPC is conducting the business in a socially responsible way by maintaining high level of organizational integrity and ethical behavior, in conformity with expected standards of transparency in reporting and disclosing the performance in all spheres of its activities, demonstration of concern for social welfare, adoption of best management practices and effective operational methods to win the trust and confidence of all stakeholders. NHPC is playing a significant role in the area of delivering on its Corporate Social Responsibility (CSR) by addressing the social, economic and

environmental concerns of all the stakeholders including those impacted by its operations & activities.

CSR Policy of NHPC stands on the bedrock of the provisions of Companies Act, 2013 and DPE's latest Guidelines on CSR effective from 01.04.2014. CSR activities undertaken by NHPC are in conformity with the activities specified in Schedule-VII of the Companies Act, 2013. CSR Policy of NHPC is a statement of Company's commitment to fulfill its stakeholders' aspirations thereby contributing to sustainable development.

NHPC has implemented a number of CSR initiatives for the community living around its Projects/ Power Stations/ Units in the areas of Healthcare, Education, Rural Development, Skill Development, Environmental sustainability, Women Empowerment, Promotion of sports, arts & culture etc.

Outreach of NHPC's CSR initiatives:

Education: To encourage parents to send their school going children to school, lighten their financial burden on school education and sustain their efforts to support their children to complete school education, school children are being given NHPC's scholarship. Besides, with a view to encourage competitive spirit amongst students and to nurture their academic talent, scholarships are being given to pursue higher studies. NHPC also supports schools in its neighbourhood by supplementing its infrastructure gaps, furnishings, latest training aids, computer peripherals etc. To promote easy accessibility of quality and relevant higher technical education, NHPC has planned to contribute for the establishment of two Engineering Colleges, one in Darjeeling (West Bengal) and other in Bilaspur (Himachal Pradesh) and a Hydro Power Training Institute in Kangan (Jammu & Kashmir).



Skill Development: NHPC has been assisting all the strata of the society with the aim to enhance their employability by organizing skill development programs for the unemployed youth in the periphery of its Projects/Power Stations. Even women folk are assisted to undergo Skill Development Programs in order to make them not only self-reliant but also earn substantially to support their family. Besides, facilities in terms of course module, faculty development, training and infrastructural development and improvement in existing building and laboratory have been created in Industrial Training Institutes adopted by NHPC.



Healthcare: Prioritizing the good health of Community under CSR is one of the topmost commitments of NHPC. A large number of immunization programmes, heart checkup camp, diabetic camp and eye care camps have





been organized for common people and children living in nearby areas of NHPC Projects and Power Stations. Deployment of Mobile medical units (MMUs) for providing healthcare services in rural areas is also being done.

Rural Development: NHPC has been instrumental in bringing about a remarkable change in the vicinity of its operations. It has taken initiatives towards construction of pathways, construction & renovation of community halls, construction of drains, shelters and waiting sheds, establishment of food processing units, providing potable drinking water, arrangement of drinking water supply lines, providing community RO plant & sanitation complex at locations, restoration of Kuls for irrigation etc for the common people in nearby areas of its Projects / Power Stations/ Units.



Sanitation: NHPC has constructed 7045 toilets in Govt. schools in 8 states under Swachh



Vidyalaya Abhiyan as a part of its CSR activity in the vicinity of its project locations. NHPC is also implementing the flagship programs of the Government of India like Swachh Bharat Abhiyan.

Environment: Various programmes aimed at improving environmental sustainability have been implemented in nearby areas of NHPC's Projects and Power Stations. A great deal of effort is made by NHPC to conserve the biodiversity in the vicinity of the power stations/ projects. Development of Biodiversity Park is one of the flagship programme under environment sustainability. Other initiatives include providing soil testing van to Agriculture Deptt., paper recycling unit, training on best horticultural / agricultural practices, rain water harvesting, setting up of herbal parks etc.

Women Empowerment: Women Empowerment programmes have been implemented for adolescent girls and women in many of the projects / power stations. Training assistance has been extended to women in various courses to generate self employment.



Other activities:

NHPC has also been promoting sports in rural areas. NHPC employees have time and again rallied to help victims of natural calamities

and contributing to relief and rehabilitation measures.

Awards & Accolades: For its CSR initiatives, NHPC Limited has been conferred with awards like 1st Pt. Madan Mohan Malaviya Bronze Award for best CSR Practices in Education, IPE Corporate Governance Award for exemplary initiatives in the area of CSR, CIDC Vishwakarma Award under Social Responsibility category, India Power Award for its outstanding work under CSR, AMITY Award for Best Practices of Corporate Social Responsibility, SCOPE Meritorious Award for CSR and Responsiveness. In a ceremony held on 02.11.2015 at New Delhi, NHPC was felicitated

by Hon'ble Minister for Power, Coal and New and Renewable Energy and Mines, Shri Piyush Goel for the achievement of target of construction of toilets in Govt. schools under Swachh Vidyalaya Abhiyan.



SECTION-I

BUDGET ALLOCATION & EXPENDITURE



*Allocation Vs Expenditure On CSR & Sustainability
During FY 2015-16*

S.N.	Power Stations /Projects /Units	Fund Allocation (Rs. In Lakhs)	Expenditure (Rs. In Lakhs)
1	Salal	307.25	301.49
2	Sewa-II	13.50	12.24
3	Dulhasti	108.50	106.61
4	Uri-I	198.00	176.55
5	Uri-II	160.93	133.18
6	Kishanganga	64.44	14.66
7	Chutak	44.91	44.41
8	Nimmo-Bazgo	56.05	48.38
9	Baira-Siul	10.80	8.59
10	Chamera-I	17.93	10.79
11	Chamera-II	8.86	8.58
12	Chamera-III	10.01	9.84
13	Loktak	52.20	40.31
14	Parbati-II	27.93	26.10
15	Parbati-III	10.40	6.16
16	Kotli Bhel	24.08	17.98
17	Dhauliganga	427.89	389.63
18	Tanakpur	484.15	284.42
19	RO- Siliguri	527.95	488.83
20	Rangit	12.00	9.95
21	Teesta-V	59.00	34.04
22	TLDP-III	188.08	109.06



S.N.	Power Stations /Projects /Units	Fund Allocation (Rs. In Lakhs)	Expenditure (Rs. In Lakhs)
23	TLDP-IV	275.17	201.24
24	Teesta-IV	12.10	2.90
25	Subansiri Lower	6384.65	4707.90
26	Dibang	66.45	26.80
27	Tawang-I	12.50	12.50
28	Tawang-II	29.10	24.40
Corporate Office-			
29	CSR Activities taken up by Corporate Office	41.05	10.00
	Total	9635.88	7267.55

- The Total Available Fund of Rs. 96.36 Cr includes the Budget Allocation for FY 2015-16 (Rs. 64.92 Cr i.e @ 3% of Avg. Profit of Past 03 Years) , Unspent CSR fund from previous years (Rs. 13.33 Cr) and additional fund approved by the Board Rs.18.11 Cr. (Rs. 43.28 Cr @ 2% of Avg. Profit of Past 02 Years – Rs.25.17 Cr remained unallocated which was returned to NHPC Main Accounts)
- The Balance Unspent Amount of Rs. 23.68 Cr (Rs.96.36 Cr- Rs. 72.68 Cr) has been carried over to next Financial Year (2016-17) for completion of continuing activities.



Journey Continues...



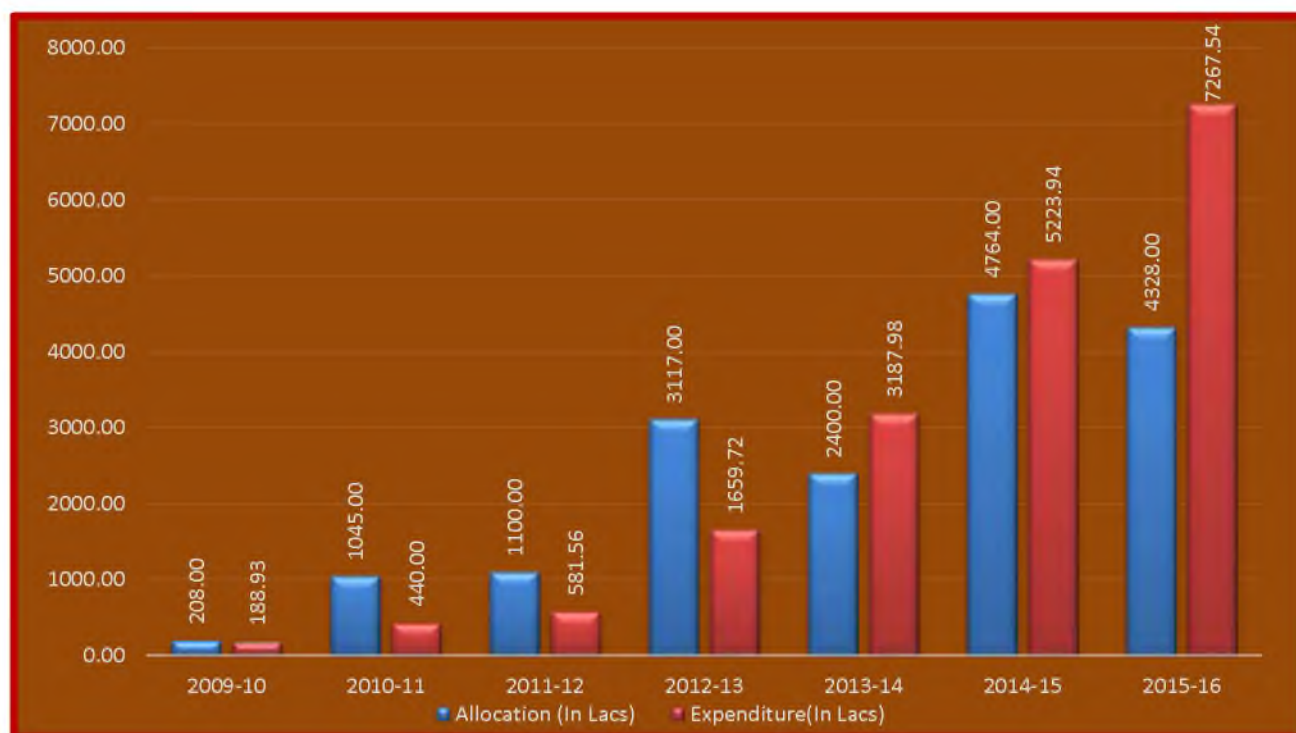


SECTION-II

Allocation Vs. Expenditure on CSR & Sustainability During Previous Years

*Amount in Lacs

Financial Year	Allocation (Mandatory)	Expenditure
2009-10	208.00	188.93
2010-11	1045.00	440.00
2011-12	1100.00	581.56
2012-13	3117.00	1659.72
2013-14	2400.00	3187.98
2014-15	4764.00	5223.94
2015-16	4328.00	7267.55



Graph showing Allocation and Expenditure on CSR during Previous Years



Step Ahead



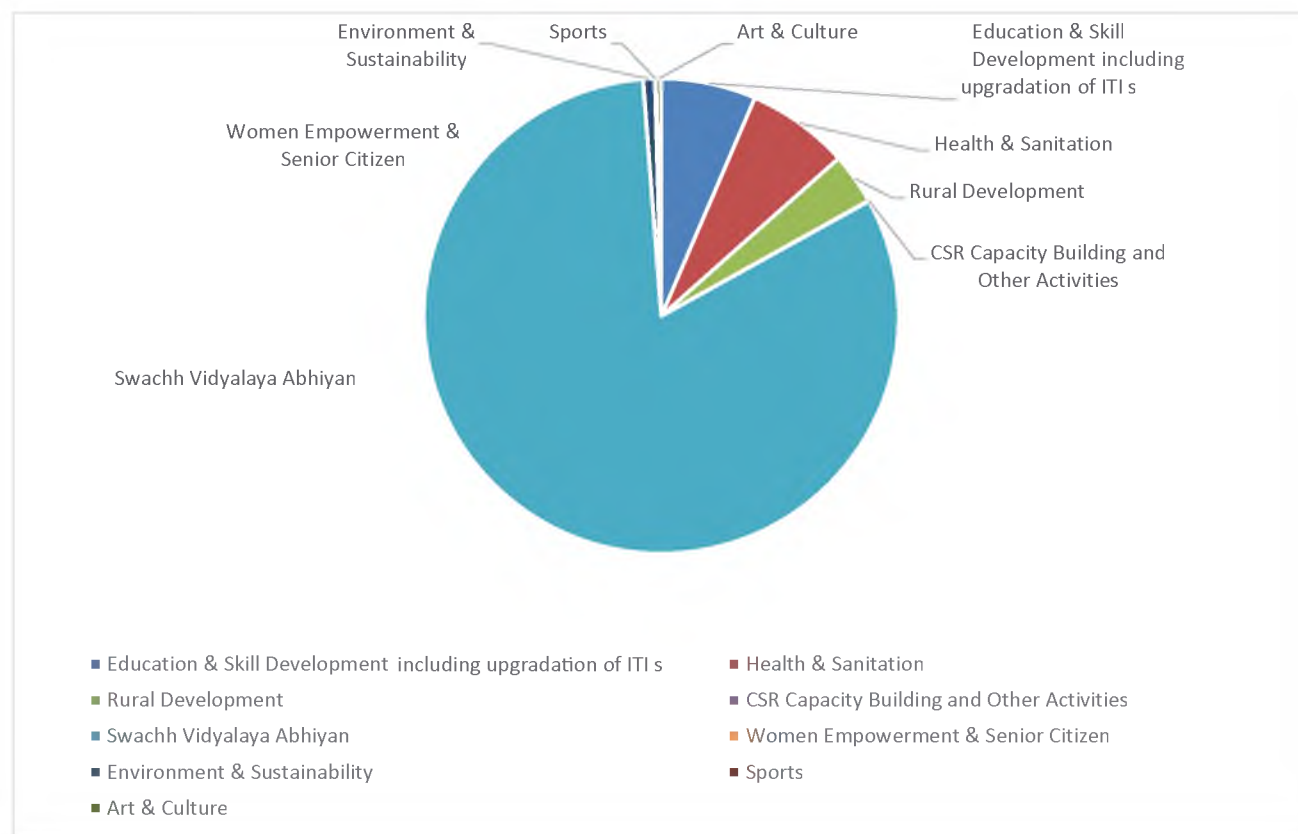


SECTION-III

Sector Wise Expenditure on CSR & Sustainability FY 2015-16

* Amount in Lacs

Education & Skill Dev.	Health & Sanitation	Rural Dev.	CSR Capacity Building and Other Activities	Swachh Vidyalaya Abhiyan	Women Empowerment & Senior Citizen	Environment & Sustainability	Sports	Art & Culture
469.05	507.42	253.20	2.71	5945.19	1.49	57.00	6.54	24.95



Graph Showing Sector wise Expenditure during FY 2015-16



Distribution of Sewing Machine during training on cutting and tailoring - organised by Chamera-III, Power Station



Participants of training on cutting and tailoring - organised by Chamera-III, Power Station



SECTION-IV

MAJOR CSR INITIATIVES BY NHPC DURING FY 2015-16



“SWACHH VIDYALAYA ABHIYAN”



In response to the clarion call given by Hon'ble Prime Minister in his Independence Day speech on 15.08.2014, NHPC Limited, the premier organization in Hydro Sector, under Swachh Vidyalaya Abhiyan associated itself under the aegis of Ministry of Power for construction of toilets in Govt. Schools nearby its projects/ power stations/ units. The target for construction of toilets in schools for NHPC was 6802. NHPC has

undertaken the construction of 7045 nos toilets against the target of 6802. Construction work of toilets was undertaken in Govt. Schools located in 34 districts of 8 states. States covered were Arunachal Pradesh, Assam, Himachal Pradesh, Jammu & Kashmir, Madhya Pradesh, Manipur, Uttarakhand and West Bengal.

Target Assigned to NHPC for construction of Toilets in Govt. Schools => 6802 Nos

Details of Toilets Constructed under Swachh Vidyalaya Abhiyan

S.N.	Name of State	Name of Project / Power Station / Unit	No. of Toilets Constructed
1	Arunachal Pradesh	Tawang Project	7
		Dibang Multipurpose Project	12
		Subansiri Lower Project	304
		Total	323
2	Assam	Subansiri Lower Project	2824
		Total	2824
3	Himachal Pradesh	Chamera-II Power Station	3
		Pārbati-II Project	5
		Total	8



S.N.	Name of State	Name of Project / Power Station / Unit	No. of Toilets Constructed
4	Jammu & Kashmir	Salal Power Station	153
		Nimoo-Bazgo Power Station	4
		Dulhasti Power Station	72
		Uri-I Power Station	185
		Uri-II Power Station	59
		Chutak Power Station	4
		Total	477
5	Madhya Pradesh	NHDC Limited	1425
		Total	1425
6	Manipur	Loktak Power Station	35
		Total	35
7	Uttarakhand	Tanakpur Power Station	298
		Dhauliganga Power Station	471
		Total	769
8	West Bengal	Regional Office Siliguri	848
		Teesta Low Dam Project, Stage-IV	172
		Teesta Low Dam-III Power Station	164
		Total	1184
		Grand total	7045



Toilet Constructed under "Swachh Vidyalaya Abhiyan" by Subansiri Lower Project



Toilet Constructed under "Swachh Vidyalaya Abhiyan" by Subansiri Lower Project



“SPANDAN”



NHPC under its CSR-SD scheme has taken up a number of programs to improve the health indices of its stakeholders.

Subansiri Lower Project, a Unit of NHPC Limited launched “SPANDAN” mobile health care service on 25.02.2016, a new CSR initiative to ensure health benefits across all age-groups amongst the remotest of populations, by launching 20 nos. of Mobile Medical Units for five districts of Assam namely Dhemaji, Lakhimpur, Sonitpur, Biswanath Chariali & Majuli. These mobile medical units will reach out to the so-far unattended masses in the remotest locations of above districts where gaps exists in terms of medical facilities & it’s outreach to the intended beneficiaries.

“SPANDAN” Project is designed to enhance,

augment & supplement community wellbeing services as a whole. It aims to reach out to the “last person” through tailored & synchronized health services. Each mobile medical unit under SPANDAN will be staffed by a doctor, a nurse and supporting paramedics, with an aim to cater to maternal & infant illnesses, common ailments of school-going children & the elderly. Each MMU shall hold periodic Medical Camps to ensure that basic healthcare services reach the doorsteps of each individual. The MMUs, apart from diagnosing & treating common ailments, shall also focus on endemic disease patterns, maternal & child health, geriatric illnesses, addictions & other common health issues. The van is equipped with generic common medicines, basic diagnostic equipment, first aid materials etc.





“KALASH”



“Kalash” - Under this scheme, survey and construction of safe Drinking water facilities at various locations of Dhemaji District, Lakhimpur districts and Majuli district have been carried out by signing MoU with local bodies, management committees. The scheme includes an RCC

platform for placing the conventional sand filter tank and for housing the filtered water storage of 500Lt. In absence of regular water supply facility, bore wells will be provided to cater the water supply requirement.



SECTION-V

PROJECT WISE DETAILS OF CSR & SD ACTIVITIES





REGION: JAMMU

Salal Power Station, Distt - Reasi (J&K):-

*Amount in Lakhs

Sector	CSR Activities Undertaken	Expenditure
Swachh Vidyalaya Abhiyan	Construction of toilets in Govt. Schools	252.72
Education	Construction of class room cum Examination Hall at Govt. Girls Higher Secondary School, Tehsil & Distt-Reasi	13.72
	Construction of class room cum Examination Hall at First Floor with facility of Verandas at Ground & First floors at Govt. High School Village Kambaldanga, Tehsil & Distt. Reasi	13.20
	Protection and repair/renovation works at Primary School, Village Braotrain Mari, Vijaypur and Middle School, Aghar Balian.	8.77
Rural Development	Construction of Bridge for villagers of village Dasanu, Seela and Panasa and a way to public utility place.	10.00
	Additional Work of Protection of premises and Construction of Kitchen shed at Community Hall at village-Mari	0.62
Sports	Promotion of Rural Sports	1.59
Art and Culture	Facilitating the cultural Program at Baba Aghar Jitto Mela and Meeting at Katra	0.87
	Total	301.49

Sewa –II Power Station, Distt- Kathua (J&K):-

Sector	CSR Activities Undertaken	Expenditure
Health Care	Providing X-Ray Machine in Govt. Hospital at Bani	4.44
Education	Distribution of Scholarships	4.48
Rural Development	Construction of toilet & Stage at Hut	3.32
	Total	12.24

Dulhasti Power Station, Distt- Kishtwar (J&K):-

* Amount in Lakhs

Sector	CSR Activities Undertaken	Expenditure
Swachh Vidyalaya Abhiyan	Construction of toilets in Govt. Schools.	98.00
Education	Educating and Empowering Visually impaired persons by opening up a Blind Rehabilitation School.	0.19
	Upgradation of ITI	1.46
Health Care	Medical Camp and Eye Check Up Camps	6.96
	"Swachh Bharat " Drive under CSR & SD	
	Total	106.61

Uri Power Station, Distt-Baramulla (J&K):-

Sector	CSR Activities Undertaken	Expenditure
Swachh Vidyalaya Abhiyan	Construction of toilets in Govt. Schools	176.55
	Total	176.55

Uri-II Power Station, Distt-Baramulla (J&K):-

Sector	CSR Activities Undertaken	Expenditure
Swachh Vidyalaya Abhiyan	Construction of toilets in Govt. Schools.	115.12
Rural Development	Rain Shelter in Salamabad	1.53
	Providing footpath in Sadwania	1.32
	Construction of Approach Path to Graveyard, Salamabad	4.37
	Construction of footpath (PPC) with Parallel Drain in Dachi Village	5.81
	Construction of footpath in Salamabad	1.64
	Fencing of Graveyard at Sadwania	3.40
	Total	133.18



Kishanganga Project, Distt- Bandipora (J&K):-

* Amount in Lakhs

Sector	CSR Activities Undertaken	Expenditure
Health Care	Conducting Medical Camp for Villages	0.96
Education	Supply and Installation of CCTV Camera at ITI Bandipora	1.21
	Computer Distribution to ITI	0.08
	Computer Training provided to ITI students at Srinagar	0.30
	Construction of Parapet Wall, Concreting of ground and drain work at Govt. Boys Middle School, Darmahama Mantrigram, Bandipora	2.12
Rural Development	Construction of Drain from Grave Yard to Main Drain of Kralpora	4.97
	Construction of Concrete Pathway in Village Wanpora	2.32
	Development of agriculture and apiculture in the Project Affected Areas of Kishanganga Project	2.69
	Total	14.66

Chutak Power Station, Distt- Kargil (J&K):-

Sector	CSR Activities Undertaken	Expenditure
Swachh Vidyalaya Abhiyan	Construction of toilets in Govt. Schools	14.57
Health Care	Installation of Hand pumps at High School Minji by PHE Kargil	2.96
	Providing drinking water through tanker for Chutak Village	1.87
Rural Development	Repair & Renovation of Community Centre at Minji Village	19.40
	Construction of Irrigation Kul	0.28
	Tree Cutting for Charging of 66 KV transmission Line of Chutak Power Station	1.41
Women Empowerment/ Senior Citizen	Training in Tailoring and Knitting and providing sewing machines	3.62
Sports	Sports Events	0.30
	Total	44.41

Nimoo- Bazgo Power Station, Distt- Leh Ladakh (J&K):-

Sector	CSR Activities Undertaken	Expenditure
Swachh Vidyalaya Abhiyan	Construction of toilets in Govt. Schools	18.62
Health Care	Construction/Installation of water Supply and Sanitation in Leh & Surrounding Villages	9.97
Education	Installation of Digital Class Room at Govt Boys & Girls higher Secondary School, Leh	0.80
Rural Development	Purchasing and Installation of food processing plant for villages	18.99
	Total	48.38



REGION : BANIKHET

Baira-Siul Power Station, Distt- Chamba (HP):-

* Amount in Lakhs

Sector	CSR Activities Undertaken	Expenditure
Education	Scholarship under "NHPC Scholarship Award Scheme"	1.99
	Providing Scholarship to SC/ST/Girls Students	4.00
Women Empowerment/ Senior Citizen	Vocational Training to rural youth/women to enhance their employability	1.55
Sports	Organizing of local Sports	1.04
	Total	8.59

Chamera-I Power Station, Distt- Chamba (HP):-

Sector	CSR Activities Undertaken	Expenditure
Education	Providing Scholarship to meritorious Students for higher studies	1.08
Health Care	Medical Camp/Medicines for Locals	2.91
	Providing Medicines to Locals through Project Hospital	3.32
Rural Development	Improvement of footpath at Harijan Basti Village Kanda Gram Panchayat Pukhari	1.55
	Improvement by construction of path from Bathri Bazar to Village Matiyana, Gram Panchayat-Bathri	1.93
	Total	10.79

Chamera-II Power Station, Distt- Chamba (HP):-

* Amount in Lakhs

Sector	CSR Activities Undertaken	Expenditure
Swachh Vidyalaya Abhiyan	Construction of toilets in Govt. Schools	0.31
Education	Providing Computer peripherals & training to the Students of 6th to 12th Class in 5 schools with 2 computers each	3.53
Rural Development	Construction of store at Shamshan Ghat for Storage of Wood	2.65
Art and Culture	Organizing of local Melas and Fairs	0.51
Sports	Organizing of local Sports	1.58
	Total	8.58

Chamera-III Power Station, Distt- Chamba (HP):-

Sector	CSR Activities Undertaken	Expenditure
Education	Providing roof slab over existing Govt. primary school building at Lilh	1.86
	Skill Development Programs/ Coaching to Students of Govt. Schools	1.75
Rural Development	Rural Development activities on the basis of local panchayats Requirements such as fencing at hill side, restoration of footpath of Govt. school, concrete flooring at Govt. School and path to primary school Melah etc.	4.96
Art and Culture	Organizing of local Mela and Fair etc.	0.88
Sports	Organizing of local Sports and providing track suits to the children of Bal Ashram Mehla	0.40
	Total	9.84



REGION: KOLKATA

Loktak Power Station, Komkeirap (Manipur):-

*Amount in Lakhs

Sector	CSR Activities Undertaken	Expenditure
Swachh Vidyalaya Abhiyan	Construction of toilets in Govt. Schools	35.39
Rural Development	Construction of RCC Box type Culvert at new Kungpi Naosen	4.92
	Total	40.31

REGION: CHANDIGARH

Parbati-II H.E. Project, Distt- Mandi (HP):-

*Amount in Lakhs

Sector	CSR Activities Undertaken	Expenditure
Swachh Vidyalaya Abhiyan	Construction of toilets in Govt. Schools	5.77
Education	Scholarship under "NHPC Scholarship Award Scheme"	1.68
	Providing Scholarship to SC/ST/Girls Students	2.94
	Construction of Govt. Primary School at Village -Raha GP Nagwain.	4.77
	Various Skill Development Training Programe	1.00
	Vocational Training Programe to enhance employability to locals	1.25
Rural Development	Relief & Rehabilitation for fire victims of Kotla Village.	5.73
Environment	Installation of 15 no. Street lighting CFL Type at Kalehali	2.96
	Total	26.10

Parbati-III H.E. Project, Distt- Kullu (HP):-

Sector	CSR Activities Undertaken	Expenditure
Education	Distribution of Computers in school under project area	4.72
	Scholarship under " NHPC Scholarship Award Scheme"	1.44
	Total	6.16



REGION: DEHRADUN

Kotli Bhel Project 1A, Distt – Tehri Garwal (Uttarakhand):-

*Amount in Lakhs

Sector	CSR Activities Undertaken	Expenditure
Education	Upgradation of ITI Rudraprayag	15.45
	Upgradation of ITI Pokhara	
	Construction of 03 rooms at Degree College Devprayag	
	Education including Vocational Courses, Skill Development & Technical trainings at Project Affected Villages	
Health Care	Organizing of Medical Camps	2.41
Environment	Environment Protection Activities	0.03
Sports	Promotion of Rural Sports	0.10
	Total	17.98

Dhauliganga Power Station, Distt – Pithoragarh (Uttarakhand):-

Sector	CSR Activities Undertaken	Expenditure
Swachh Vidyalaya Abhiyan	Construction /Repairing of toilets in Govt. Schools	387.99
Rural Development	Rural Development Activities	1.46
Environment	Environment Protection Activities	0.12
Capacity Building	Arrangement of Seminar/Workshops/other Capacity Building related activities	0.06
	Total	389.63

Tanakpur Power Station, Distt–Champawat (Uttarakhand):-

Sector	CSR Activities Undertaken	Expenditure
Swachh Vidyalaya Abhiyan	Construction of toilets in Govt. Schools	283.99
Sports	Organizing of local Sports Tournaments/Distribution of Track Suits for Uttarakhand District Level Cross Country Championship	0.43
	Total	284.42

REGION: SILIGURI

Regional Office-Siliguri:-

*Amount in Lakhs

Sector	CSR Activities Undertaken	Expenditure
Swachh Vidyalaya Abhiyan	Construction of toilets in Schools	488.83
	Total	488.83

Rangit Power Station, Rangit Nagar (South Sikkim):-

Sector	CSR Activities Undertaken	Expenditure
Health Care	Health Awareness Programme and Medical Eye Camps	3.98
	Health Check Up and distribution of Medicines to Locals through Project Hospital	3.99
Education	Providing Scholarships to SC/ST, Girls and P/H students	1.98
	Total	9.95

Teesta-V Power Station, Balutar (East Sikkim):-

Sector	CSR Activities Undertaken	Expenditure
Education	Construction of class room for students of Amalay Primary School, Namphing GPU, South Sikkim	17.71
	Ground development and fencing works of Bermiok Sr. sec. School, Namphing GPU, South Sikkim	8.86
Health Care	Awareness Programme & Medical Camps	3.04
	Handing Over of Ultrasound Machine to Distt Hospital, Singtam	4.43
	Total	34.04



Teesta Low Dam, Stage–III Power Station, Distt-Darjeeling (W. B.):-

* Amount in Lakhs

Sector	CSR Activities Undertaken	Expenditure
Swachh Vidyalaya Abhiyan	Construction of toilets in Govt. Schools	45.38
Education	School Building at Kasturi MSK School under Mungpoo Circle	20.62
Rural Development	Construction of Community Hall at Taashiding, Poshyor	16.66
	Construction of Community Hall & Toilet at Nazuk	2.37
	Construction of Community Hall at Lower Soreng busty & at Mini village, Peshok	10.77
	Construction of View point Cum Bus Stand & Toilet at 27th Mile	7.78
	Construction of Toilets at Geil Khola	3.18
Art and Culture	Supporting local cultural events	2.31
	Total	109.06

Teesta Low Dam Project, Stage-IV, Distt- Darjeeling (W.B.):-

Sector	CSR Activities Undertaken	Expenditure
Swachh Vidyalaya Abhiyan	Construction of toilets in Govt. Schools	112.11
Education	Distribution of Scholarship under "NHPC Scholarship Scheme"	0.48
	Distribution of scholarship	8.50
	Construction of School Building for Suruk Mandodary High School at Shanti Bazar	6.70
	Providing Economic Assistance to Schools for keeping Volunteer Teachers & Volunteer Cleaners	3.90
	Skill Development Program/Project for Local Youth Community	4.80
Health Care	Health Awareness Programme and Medical Camps	1.50

* Amount in Lakhs

Sector	CSR Activities Undertaken	Expenditure
Rural Development	Renovation / up gradation of old building of Kalijhora Primary School	2.90
	Construction of road and drain from Bagrakote Chunabhati Bazar to Leesh River Dam	7.70
	Construction of Community Hall at Sittong village	7.60
	Construction of Community Hall at Jarayotar village	5.30
	Construction of Community Hall at Sanu Makum	8.60
	Providing Water Supply Line with Tank at Panbu Village along the transmission line	26.20
Environment	Installation of Solar Street Lights in villages and distribution of Solar Lantern	4.50
Sports	To Promote Rural Sports & Local Culture through Sponsoring local festivals	0.45
	Total	201.24

Teesta Project, Stage-IV, PO-Singtam, East Sikkim (Sikkim):-

Sector	CSR Activities Undertaken	Expenditure
Education	Distribution of scholarship under "NHPC Scholarship Award Scheme"	1.92
Health Care	"Swachh Bharat Abhiyan"	0.98
	Total	2.90



REGION: SUBANSIRI

Subansiri Lower Project, Kolaptukar (Arunachal Pradesh):-

* Amount in Lakhs

Sector	CSR Activities Undertaken	Expenditure
Swachh Vidyalaya Abhiyan	Construction of toilets in Govt. Schools	3891.54
Environment	Installation of solar Street light Poles including heating arrangement in and around Project areas	9.21
	Creation of Bio Diversity Park : Information Center & Amenities Building	38.48
Education	Distribution of Scholarship under "NHPC Scholarship Award Scheme"	3.64
	Construction of Skill development training Centre for rural youth	33.59
	Skill Development Program	16.70
	Phase-I : Construction of VKV Hostel & Academic Building	220.42
Health Care	Safe Drinking Water facilities with bore well, filtration as per site requirement in public areas, community centers etc.	412.70
	Organizing Medical Health Camps	33.11
	Toilet units for male & female at Gorsomstupa, Zemithang, Tawang	5.66
Rural Development	Development of sanitation and water supply system in Project adopted village at Kolaptukar	7.90
	Construction of Boundary Wall at Jyotinagar Adarsh LP School Vill Karkani, Distt- Lakhimpur, Assam	3.90
	Miscellaneous Need Based CSR Activities	11.05
	Semi RCC type community hall at Ayingmori under Nacho Circle, Upper Subansiri Distt	10.00
Art and Culture	Double Storey Rostrum at General ground, Dumporijo, Upper Subansiri Distt	10.00
	Total	4707.90

REGION: ITANAGAR

Dibang Multipurpose Project, Distt- Lower Dibang Valley (A.P.) :-

*Amount in Lakhs

Sector	CSR Activities Undertaken	Expenditure
Swachh Vidyalaya Abhiyan	Construction of toilets in Govt. Schools	5.41
Education	ITI : Providing EMT Kit to ITI Roing , Electrician Trade	4.43
	ITI : Providing Survey Equipment to ITI Roing (Surveyor Trade)	3.25
	ITI : Providing one old Petrol Vehicle (Maruti Car) to ITI Roing	0.85
	ITI : Distribution of Scholarship to the Trainees of ITI Roing	3.30
	Distribution of scholarship under "NHPC Scholarship Award Scheme" to meritorious students from PAFs	5.49
	Providing Assistance to MAYU-II village & Kera-aa School	3.05
Rural Development	Construction of CC Footsteps at Kebabolin Village	0.99
Environment	Distribution of Solar Lamps to PAFs	0.03
	Total	26.80

Tawang Project, Stage-I, Distt-Tawang (Arunachal Pradesh) :-

Sector	CSR Activities Undertaken	Expenditure
Health Care	Medical camps/kits for hospital as per requirement of DMO (Tawang)	0.47
Education	Scholarship to meritorious students of Govt. Schools in Project area	2.84
	Smart Class room (Projector, Screen, computer etc.) at school (GSS, Lhou, GSS, Jang and other schools and education society in Project area	6.40
	Distribution of shelf at GSS, Lhou as per requirement of DDSE, Tawang	1.95
Sports	Promotion of local sports activity	0.84
	Total	12.50



Tawang Project, Stage-II, Distt-Tawang (Arunachal Pradesh):-

* Amount in Lakhs

Sector	CSR Activities Undertaken	Expenditure
Swachh Vidyalaya Abhiyan	Construction of toilets in Govt. Schools	9.57
Health Care	Medical Camps/Kits for hospital as per requirement of DMO (Tawang)	1.02
Education	Scholarship to meritorious students of Govt. Schools in Project area	5.24
	Smart Class room (Projector, Screen, computer etc.) at school (Govt. Hr. Sec. School, Lumla) & for Primary School Sakyur & other schools in Project affected area (Tawang district)	4.64
	Desk-Benches etc. for schools in Project area as per requirement of DDSE, Tawang	3.92
	Total	24.40

OTHER LOCATIONS

Corporate Office, Faridabad (Haryana):-

Sector	CSR Activities Undertaken	Expenditure
Environment	Supply, Installation, Testing, erection & commissioning of 200 nos 35 Watt LED Solar Street Light System at Various locations in Faridabad.	10.00
	Total	10.00

GLIMPSES OF CSR ACTIVITIES BY NHPC





Providing Medical Equipment to District Hospital, Kishtwar by Dulhasti Power Station (J&K)



Providing Dustbins to Local Community by Dulhasti Power Station (J&K)



Distribution of Sewing Machines to Local Female Youths by Chutak Power Station (J&K)



Drinking Water Supply Through Tankers to Nearby Villages by Chutak Power Station (J&K)



Construction of Rain Shelter by Sewa-II Power Station (J&K)



Computer Training to Students by Sewa-II Power Station (J&K)



Free Eye Check Up Camp by TLDP-IV (W.B.)



Beekeeping Training in Progress, Parbati-II Project



Distribution of Scholarship to Students by TLDP-IV (W.B.)



Installation of Solar Lights by Subansiri Lower Project (Arunachal Pradesh)



Construction of Skill Training Centre at Gerukmukh by Subansiri Lower Project (Arunachal Pradesh)



Providing Drinking Water Facility for Schools by Subansiri Lower Project (Arunachal Pradesh)



Providing Mobile Medical Units (MMUs) for Health Outreach Services in Assam by Subansiri Lower Project



Medical Camps Organized by Subansiri Lower Project (Arunachal Pradesh)



Furniture display at Artfed, Dhemaji by women during training, Subansiri Lower Project



Skill Development Prog. for making Incense sticks, Subansiri Lower Project

NHPC CSR

Bringing Smiles in the remotest locations of the country.





NHPC Limited

(A Government of India Enterprise)

CSR & SD DIVISION

CORPORATE OFFICE

NHPC Office Complex, Sector-33, Faridabad-121003 (Haryana)

CIN: L40101HR1975GOI032564

Telephone: - 0129-2258331, email: nhpccsr@yahoo.com

website: www.nhpcindia.com

